

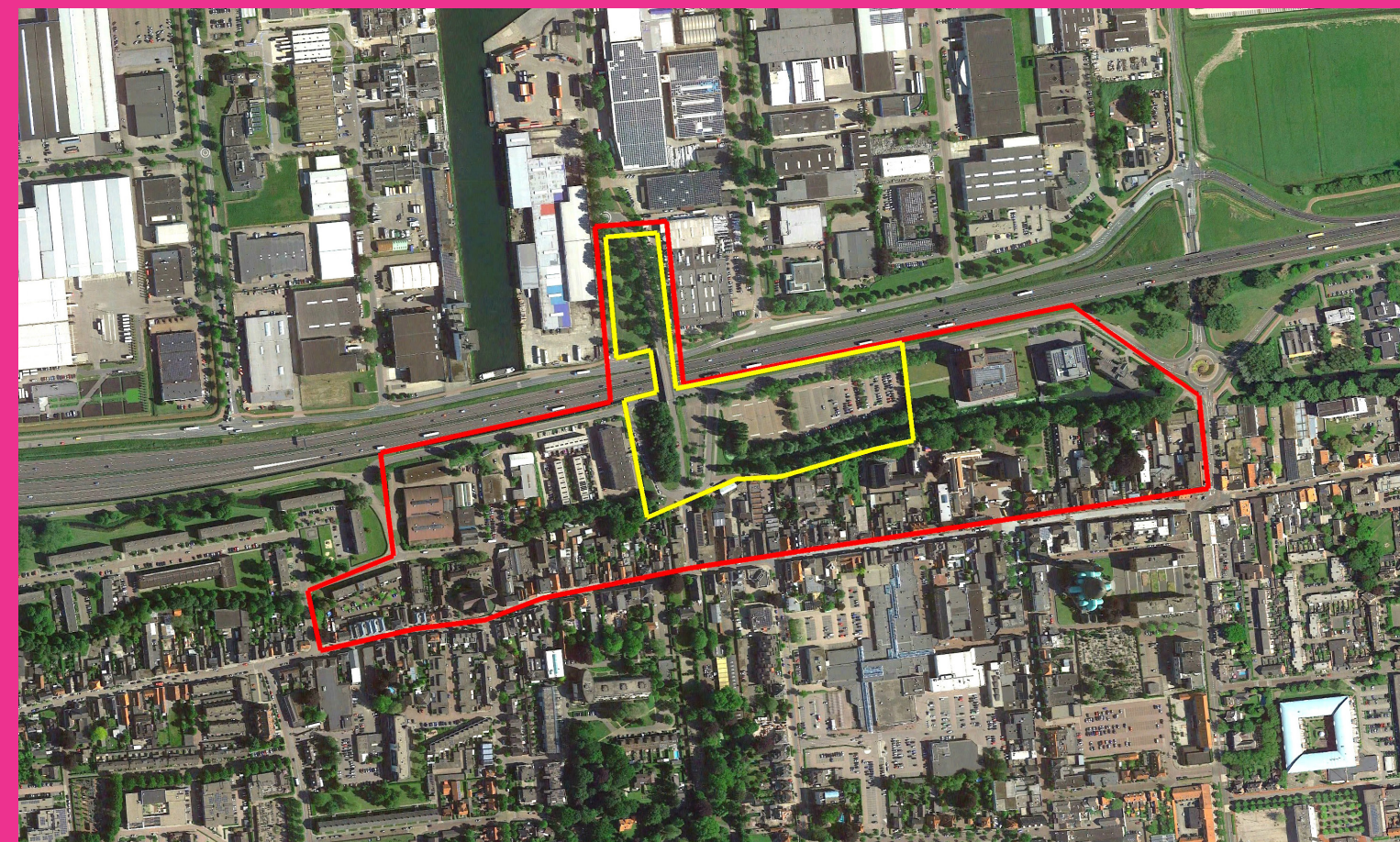
## New mobility hub at the heart of Waalwijk

Scale

L  
S

**Team representative:** Architect/Urbanist/Landscaper  
**Location:** Taxandriaweg, Waalwijk  
**Population:** City 55,000 inhab  
**Reflection site:** 19.5 ha  
**Project site:** 4,35 ha  
**Site proposed by:** Municipality Waalwijk  
**Actors involved:** Municipality Waalwijk  
**Owner(s) of the site:** Municipality Waalwijk

**Commission after competition:**  
 The concepts, typologies and/or approaches generated in the competition may lead to commissioning of further studies. Follow up research by design assignment at the project site or a site with similar challenges may be commissioned by the municipality of Breda and/or private partners. All Dutch locations are situated in the urban region called SRBT. Each sites represents prototypical design challenges within this region.



### INHABITED MILIEU'S CHALLENGES

Waalwijk is growing at an accelerated pace to 55,000 inhabitants. This increase in scale makes it necessary to raise the level of facilities in the city. Employment in Waalwijk is growing fastest in all of Brabant, which is a great incentive to facilitate the further development of companies in and in direct surroundings of Waalwijk. This quantitative and qualitative leap requires that Waalwijk is an integral part of the larger urban network with good regional connections.

The car traditionally had a prominent place in the streets of Waalwijk, but we want to give space to a wider range of mobility other than train. Various forms of transport, must be part of this to make the city more accessible. The aim is to better connect the city as a whole with the region.

Because Waalwijk does not have a train station, a new vision on the value and position of public transport is necessary in the urban fabric of Waalwijk. A new mobility system that is adaptive in time and promote the growth of the city and its economy. By combining mobility system with; housing, programs related to the logistics businesses, cultural programs Waalwijk aims to create a new urban area with an unique identity which can increase the well-being of people and their environment.



*The challenge is to develop an extension to Waalwijk's city center that fosters programmatic synergies and integrates a new mobility perspective*

*moving away from car dependency, also intensifying the use of existing areas and building upon town's historical morphology while introducing new housing typologies.*



**QUESTIONS TO THE COMPETITORS**

On the Project site, propose a transformation and densification strategy that fosters exchange between local residents and workers in logistics companies by providing space for socializing, co-working, product launches, workshops and so forth.

Propose a mixed-use area with diverse housing types that can accommodate the housing needs of local residents and logistic workers (150 - 200 new homes, 1-bed and 2-bed units).

Integrate a public transport (±4 buses) within the Project area and in addition describe a vision of smart mobility concept for Waalwijk.

Present a phasing out strategy for current parking (±350 cars) located on the site. Ultimately the future parking needs could be located on the northern side of the highway.

The presence of the highway and its associated noise is a challenge that needs to be addressed in the design of the buildings. The highway functions as a mental barrier. How to overcome this?

Within the reflection area, how can the qualities of the existing morphology be enhanced while at the same time find strategies for urban densification and Improving the connections?

