



CATEGORY urban-architectural

TEAM-REPRESENTATIVE Architect or urban planner or landscaper

LOCATION Heidelberg – Campbell Barracks

POPULATION approx. 150,000 (Südstadt approx. 4,000)

STRATEGIC SITE approx. 80 ha

SITE OF PROJECT 16 ha

SITE PROPOSED BY City of Heidelberg

OWNER(S) OF THE SITE Bundesanstalt für Immobilienaufgaben (Institute for Federal Real Estate: BImA) on behalf of the Federal Republic of Germany, after withdrawal of the US Army the City of Heidelberg is proposing to acquire the site

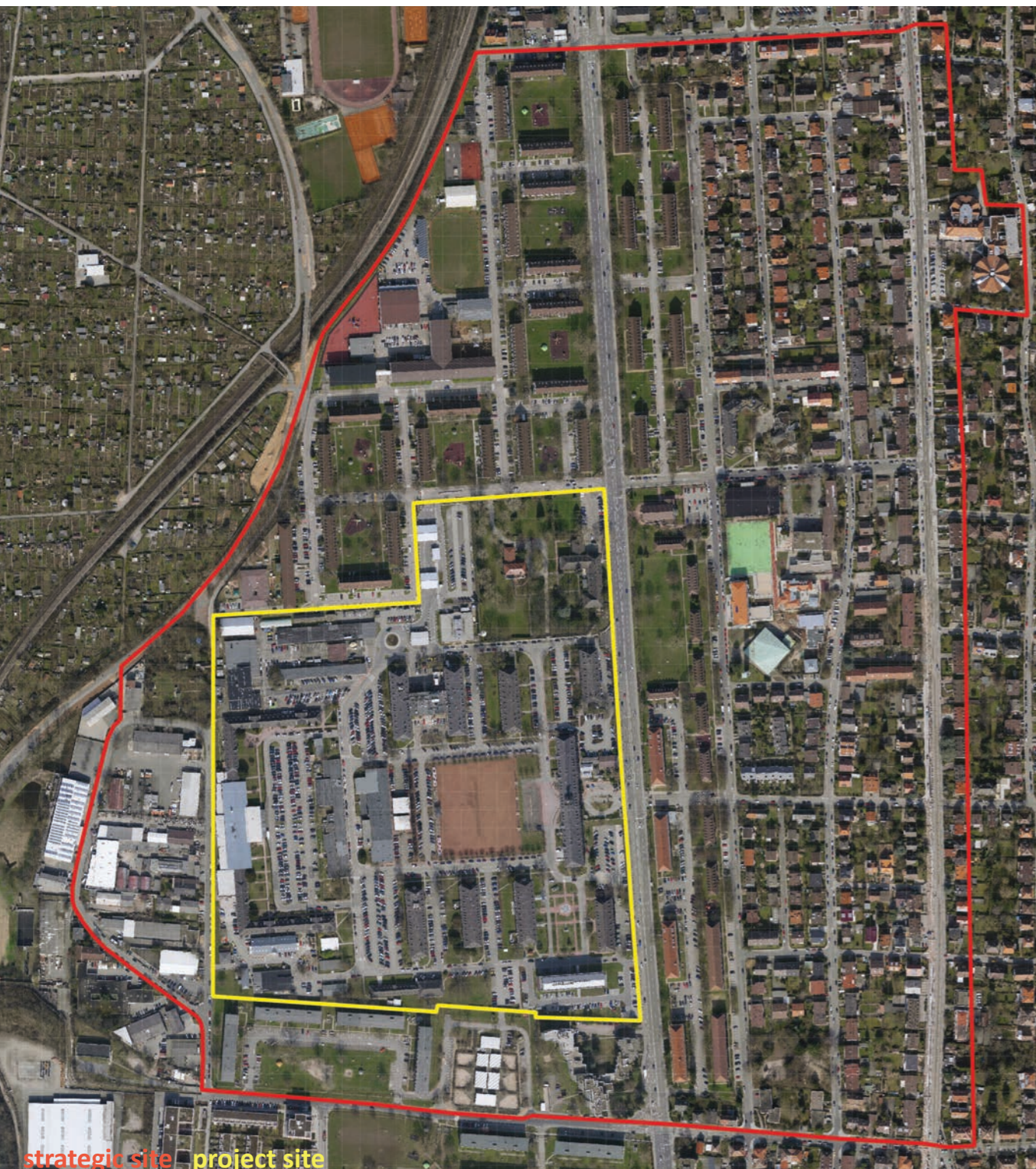
COMMISSION AFTER COMPETITION Urban master plan

HOW THE SITE CAN CONTRIBUTE TO THE ADAPTABLE CITY?

Campbell Barracks, originally erected in 1937 as Großdeutschland Kaserne and occupied by the Americans after World War II, is today the US Army's European Command headquarters. Between 2004 and 2006 the new NATO headquarters were constructed on the site and received the "Good Building Award 2008" by the Association of German Architects (BDA). The withdrawal of the US armed forces and NATO headquarters at the end of 2013 will create the opportunity for Heidelberg to convert the military site to civil use. The goal is sustainable development that gives equal consideration to social, cultural, ecological and economic aspects and ensures a high quality of urban planning.

CITY STRATEGY

The urban development concept of the city proposes Südstadt as a development focus for housing. The sites of the Campbell Barracks and Mark Twain Village, previously used for military purposes, occupy about one third of the area of Südstadt and are prominent neighbourhood features. The Südstadt district, with a current population of 4,000, has neither a commercial centre nor a central square as a meeting point and platform for communication. In an open process that allows scope for the new and unknown, the options should be examined for programming (even only temporary) uses for the buildings and what function and atmosphere could be assumed by the large, centrally located parade ground in the future network of open spaces in Südstadt.



SITE DEFINITION

Campbell Barracks are bordered on the east side by Römerstraße, which has a barrier effect due to a relatively high volume of traffic. Mark Twain Village, the residential quarters of the US forces, lies to the east of Römerstraße and north of the barracks. All military facilities, including the residential areas, were fenced in following the terrorist attacks of 11 September 2001. Campbell Barracks are arranged symmetrically around a large parade ground that is framed by three rows of buildings in the north and south. The U-shaped former stable complex marks the western boundary; here a small industrial zone borders onto the former military site. The buildings between the parade ground and the former stables/paddocks are not subject to a preservation order. Architectural ideas can be developed for this area.

ADAPTABILITY: MAIN ELEMENTS TO TAKE INTO ACCOUNT

In a transparent and open-ended process with public participation, the City of Heidelberg has drawn up guidelines for the total 180 hectare conversion area to be given over to civil use by the year 2015. The planning is to be understood as an open process – a building block for the creation of open spaces and promotion of innovation. Possible synergies with the IBA Building Exhibition “Knowledge Creates the City” should also be considered. Suggestions for innovative programmes are called for which open the barracks site – hermetically sealed for decades – to Südstadt and promote development to a diverse and lively neighbourhood with a good quality of life and courage to experiment.

New uses are to be proposed for the existing buildings, including temporary concepts, to initiate the development process and thus establish new long-term uses. The enormous open space of the parade ground offers an opportunity to compensate for the shortage of open spaces in Südstadt. Consideration should be given to whether this area can at the same time become a new focal point for the residents of Südstadt. A lively mixture of living, culture, work and recreation is to be promoted with the redevelopment of the site. At the same time the east-west link is to be strengthened at an urban climate and neighbourhood level. Particular attention should be given to the upgrading of Römerstraße to create an attractive environment and improved links.





Campbell Barracks – central entrance area