

CREATING AN INTER-CAMPUS DYNAMIC AXIS

TEAM 2 - “ADAPTABLE SURFACES“



Historically the University of Pavia was located in the very heart of the city, in a building with a series of courtyards that multiplied porosity and connections with the urban fabric. As it was in the mood of time, the new campus Cravino was built in the 70's at the Western edge of the city, well served by a ring road but poorly accessible for pedestrians and bicycles. The campus itself is monofunctional, only occupied by university facilities that are closed at night and in the weekends, whereas services and student accommodations are missing.

At present, the transfer of the San Matteo hospital area located between these two entities raises the question of its future use and gives the opportunity to improve the links between the inner city and the new university campus. The task of the workshop was to create new connections, to requalify and secure the public spaces, to rethink the station area and its surroundings as well as to invest the wasteland at the back of the rail tracks.

In a common discussion with the group on possible conceptual approaches we identified three different strategies, developed by the three teams individually afterwards: A strong linear connection, a careful work on the two currently vacant contact spaces and a network of smaller relationships. These scenarios open a broad field of possibilities, thus opening a debate between the city of Pavia and its university about their common future.

EUROPAN EUROPE
UNIVERSITÀ DEGLI STUDI DI PAVIA
E12 WINNING TEAMS



Potential



Continuity



Interface



Creativity



Scenarios



Interaction



Mixity



Landscape



Intensity

ADAPTABLE SURFACES

CREATING AN INTER-CAMPUS DYNAMIC AXIS



The proposal is based on a careful lecture of the margins between the campus Cravino, the so-called intermediate city and the historical city. The present cuts of the mobility lines of the motorway and the rail tracks form a space of borders, interpreted as adaptable surfaces. Sensitive drawings express the main concept, it consists in redefining and characterising these limits, the vegetative one at the motorway and the mineral one close to the railway area.

By inserting mineral elements in the natural border and vice-versa, the team aims to create a new perception of the differences. By taking advantage of the existing, they re-establish the broken network and give a new value to the place. Landscape interventions on both sides create a unity and help to better identify the spaces, multiple connections across the two surfaces bridge the existing gap. The work on the blind spots is continued on the programmatic level, the currently perceptible voids are filled with a multitude of small interventions, here again to provide new uses and activities.

PARTICIPANTS

Carles ENRICH (ES), Winner in Barcelona (ES) with “Inserciones urbanas”

Adriá GARDIET (ES), Winner in Warszawa (PL) with “On the Edge”

Julia FONT (ES), Beatriz SENDÍN (ES), Winner in Don Benito (ES) with “Don Benito’s Patio”, and in Kalmar (SE) with “Kalmar: Protection, density and complexity“

Davide LORENZATO (IT), Filippo PAMBIANCO (IT), Alessandro PRETOLANI (IT), Andrea SPERANDIO (IT), Runner-up in Marly (CH) with “Dancing Density”

Juan SOCAS (ES), Runner-up in Mannheim (DE) with “Re-Evolution in Mannheim”

COACH: Jens METZ (DE)

ASSISTANTS: Nunzio Davide CACI (IT), Valentina GIACOMETTI (IT)

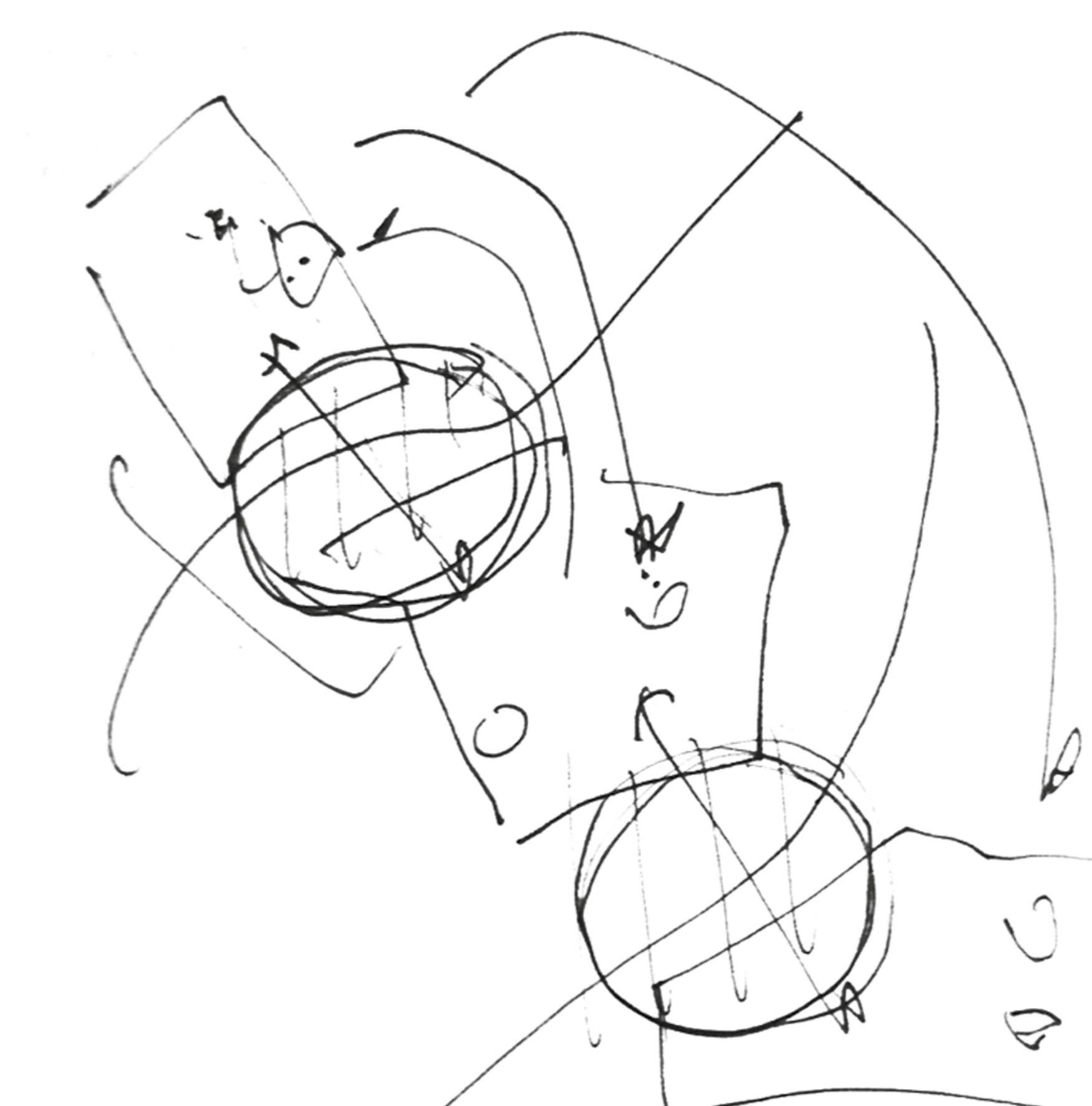
EUROPAN 12-13
INTER-SESSIONS FORUM
THE ADAPTABLE CITY

ADAPTABLE SURFACES

Creating a dynamic between Campus and City

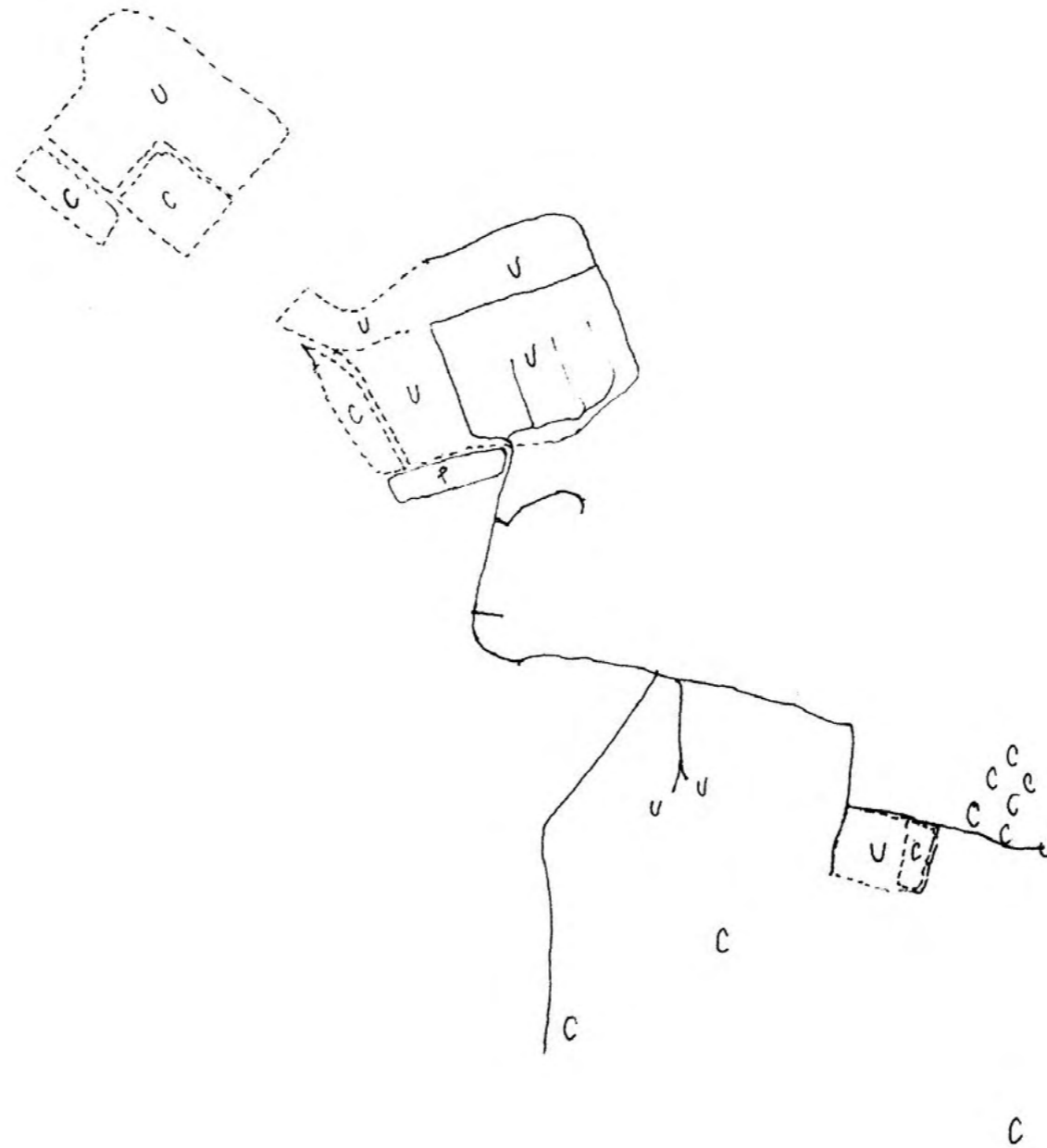
Carles Enrich
Julia Font
Adrià Guadiet
Davide Lorenzato
Filippo Pambianco
Alessandro Pretolani
Beatriz Sendín
Juan Socas
Andrea Sperandio

• first intuition sketch •



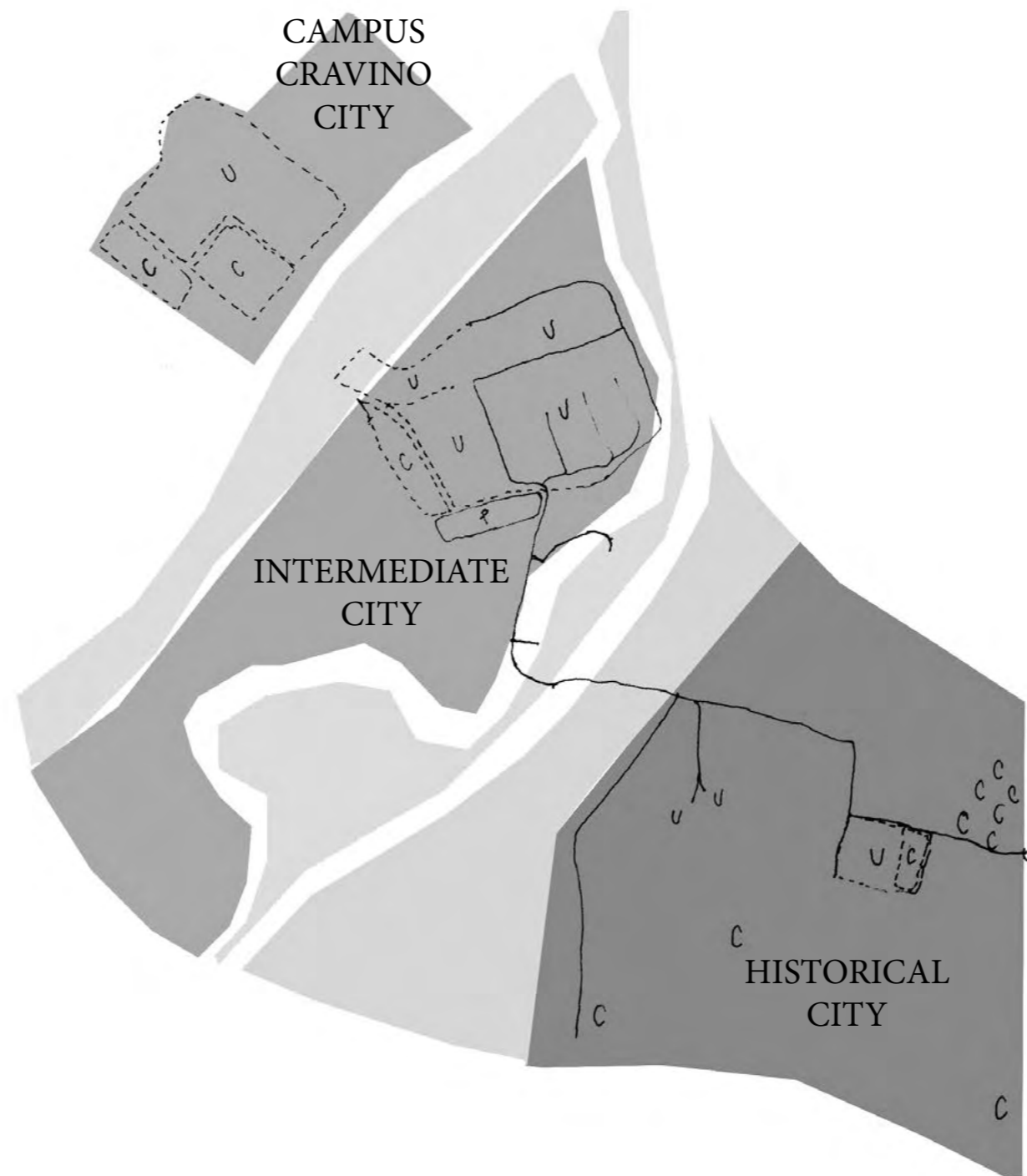
ADAPTABLE SURFACES
Creating a dynamic between Campus and City

• Existing campus situation •



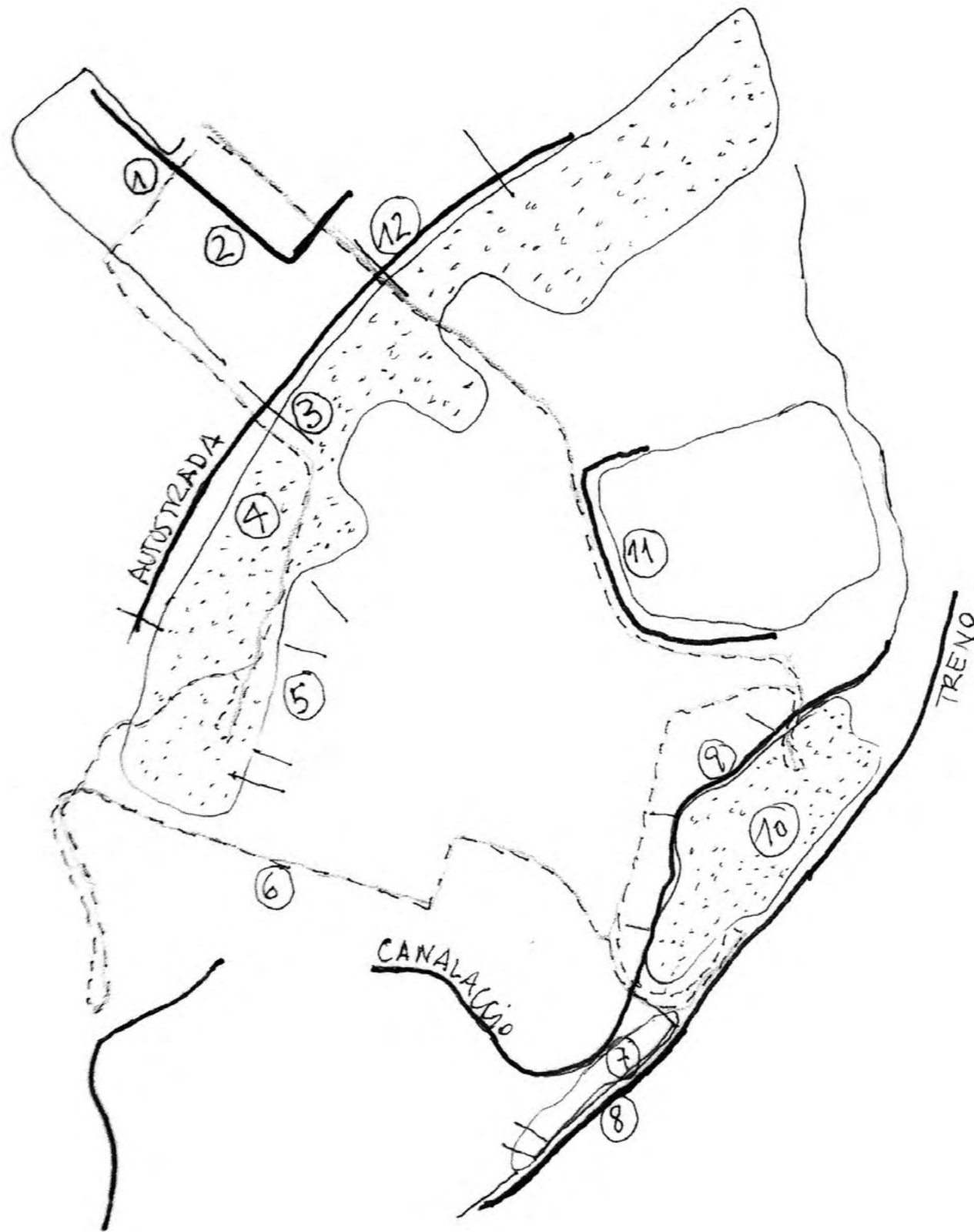
ADAPTABLE SURFACES
Creating a dynamic between Campus and City

• 3 city fragments + 2 border surfaces •



ADAPTABLE SURFACES
Creating a dynamic between Campus and City

• Second approach: walking tour •



CRITICAL POINTS

- ① Relationship College-Campus-Street
- ② Physical limits in campus (fences...)
- ③ Crossing the Autostrada (pedonal)
- ④ Green border → Opportunity!
- ⑤ limits Public-Private → Residential
- ⑥ The street with no end... (New green 2x15)
- ⑦ Station border → the residential street
- ⑧ Crossing through the station
- ⑨ Canalaccio → Landscape element → Opportunity!
- ⑩ Using the empty space and the existing building → Opportunity!

ADAPTABLE SURFACES

Creating a dynamic between Campus and City

• Natural border •



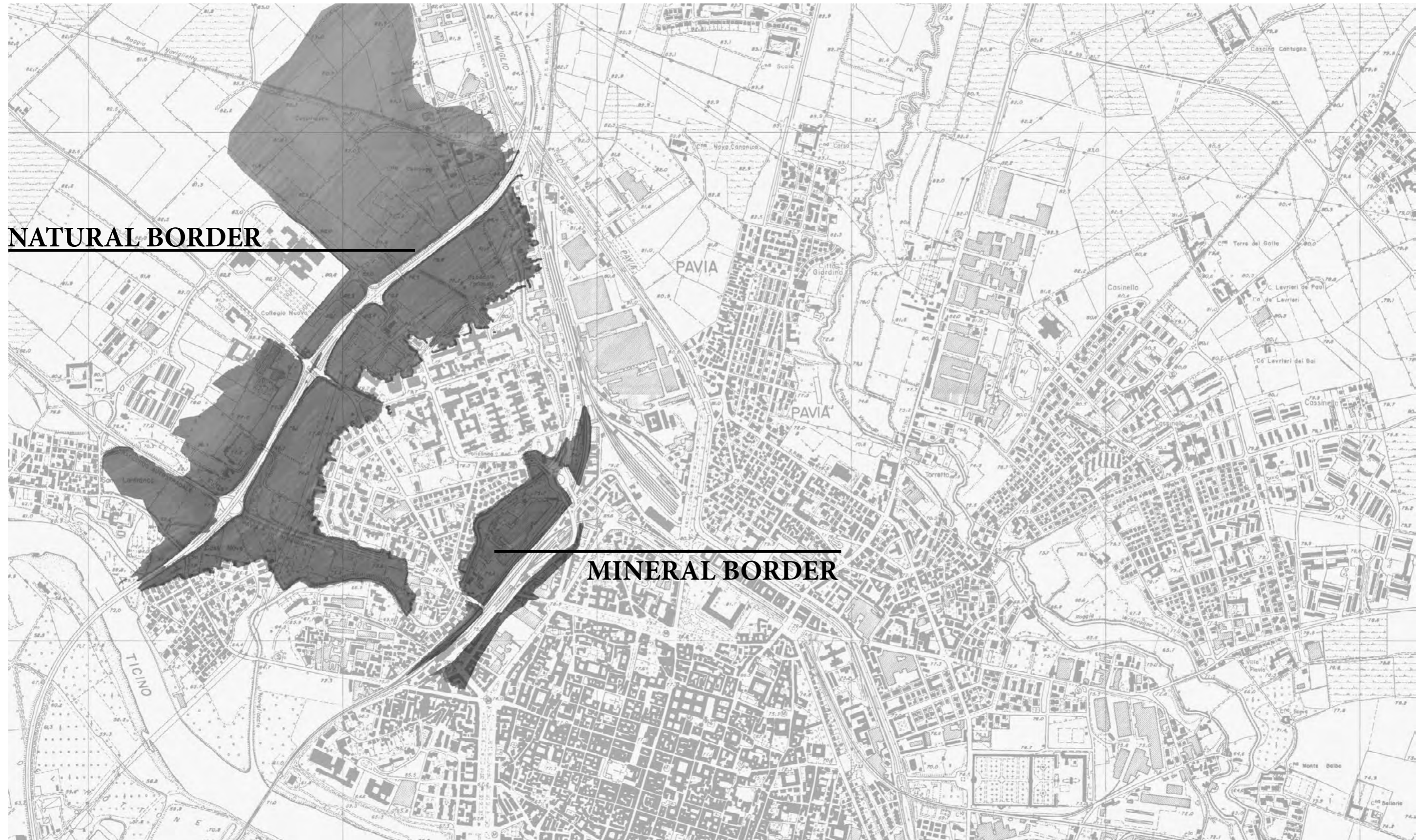
ADAPTABLE SURFACES
Creating a dynamic between Campus and City

• Mineral border •



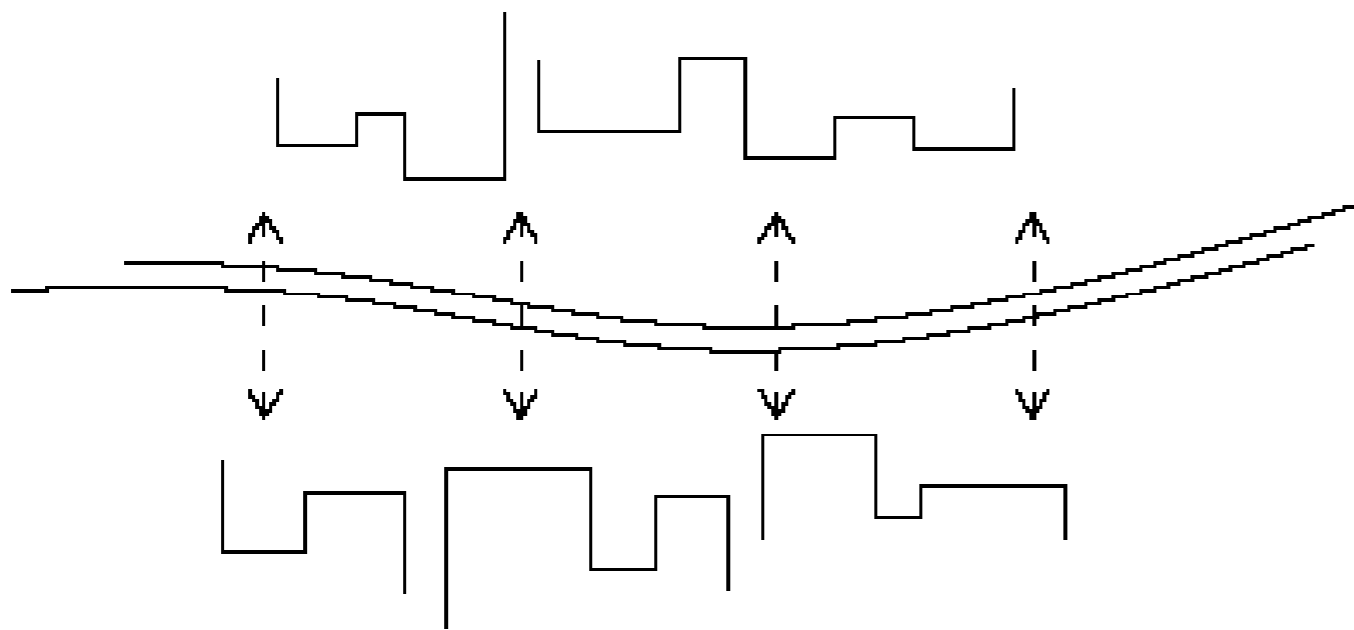
ADAPTABLE SURFACES
Creating a dynamic between Campus and City

• border surfaces •

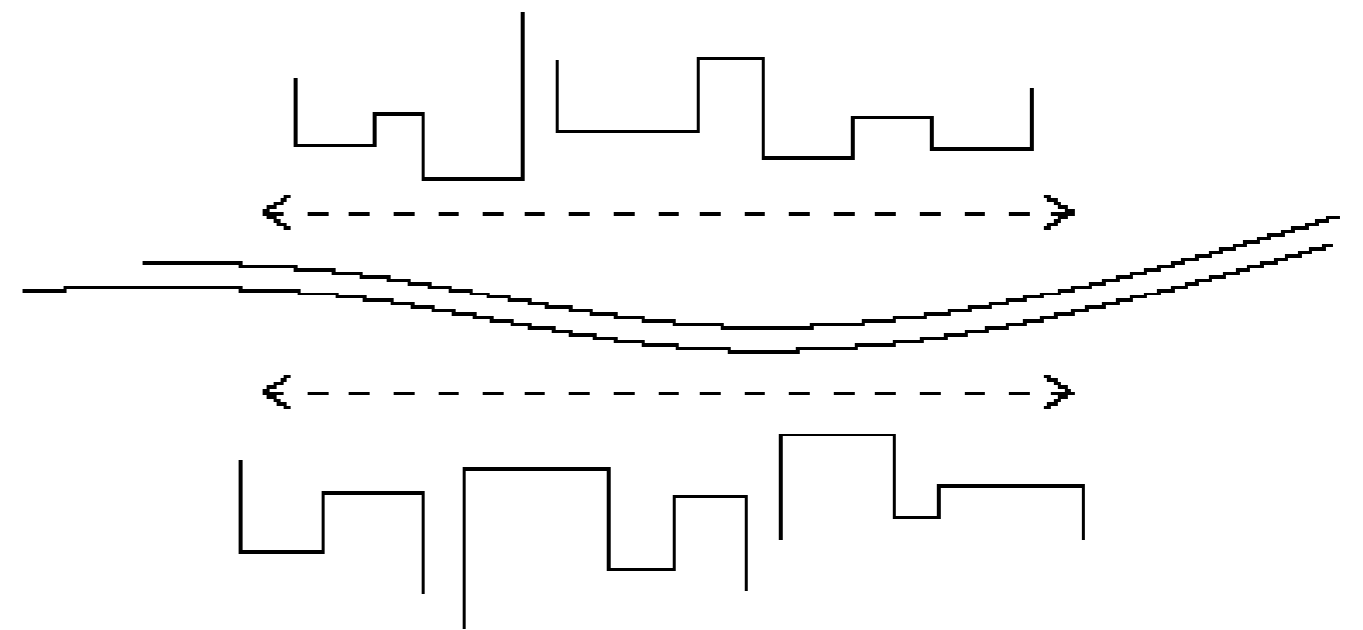


ADAPTABLE SURFACES
Creating a dynamic between Campus and City

• Project strategy •



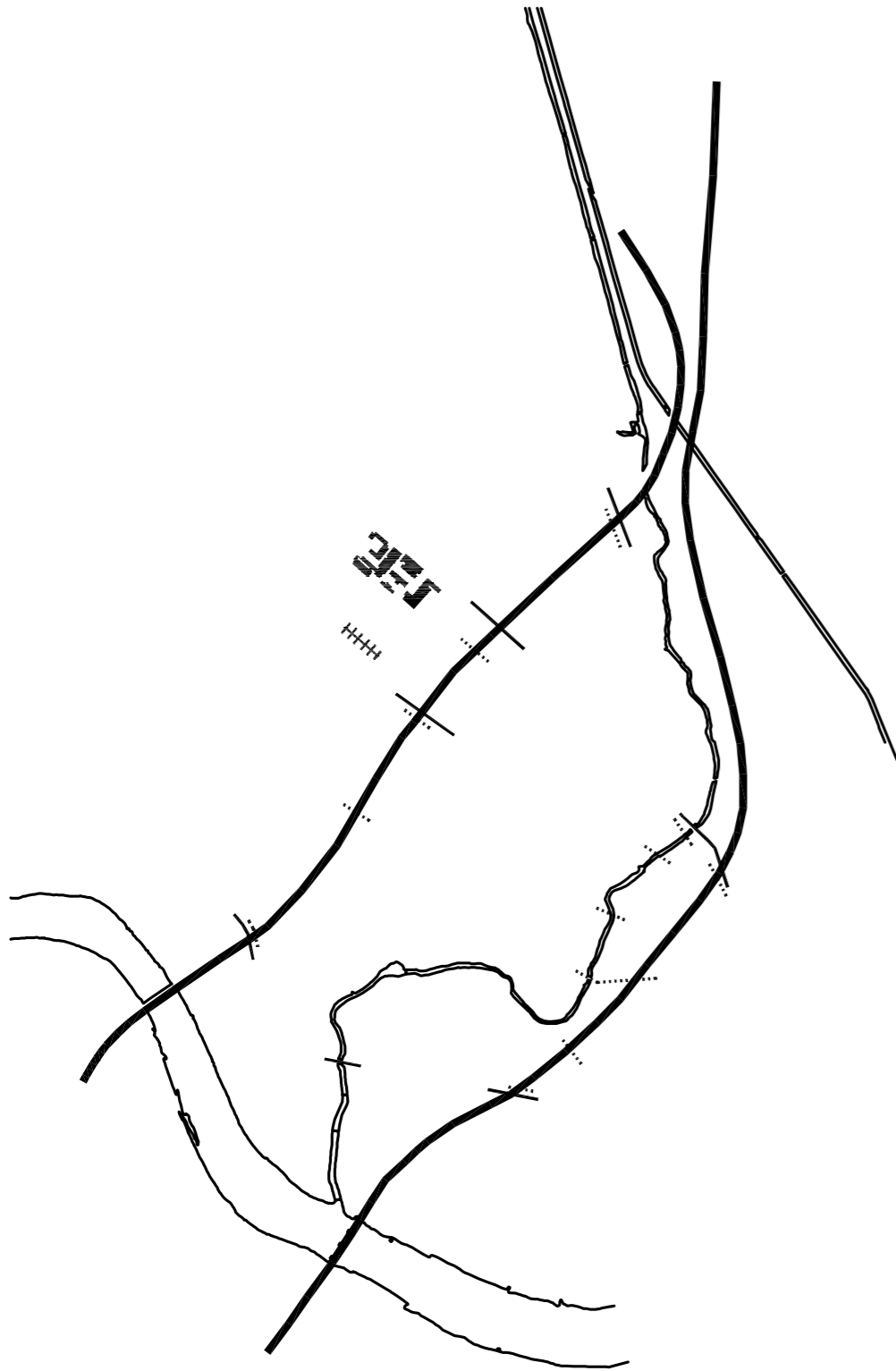
+ POROSITY
(TRANSVERSAL)



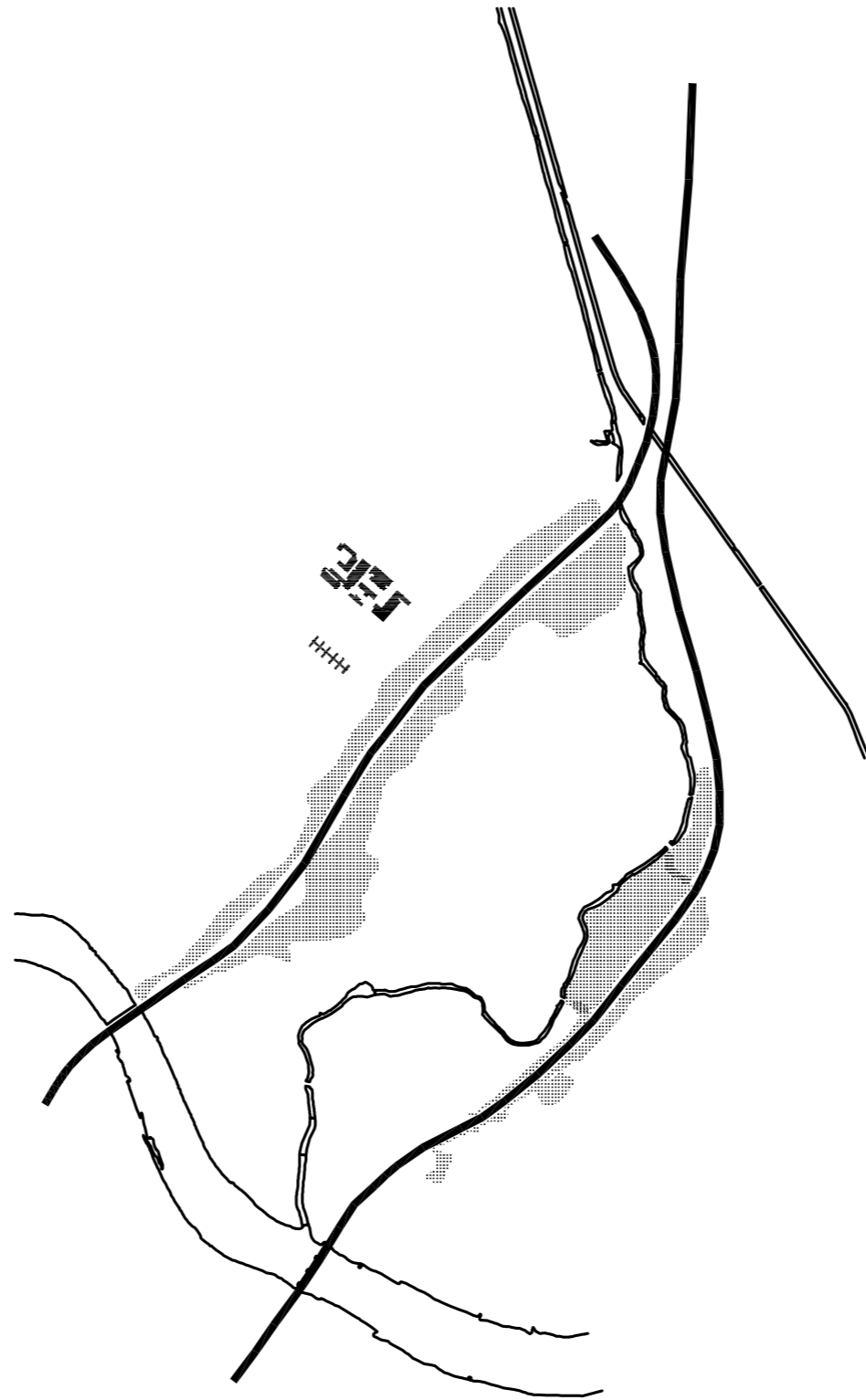
+ACTIVITY
(LONGITUDINAL)

ADAPTABLE SURFACES
Creating a dynamic between Campus and City

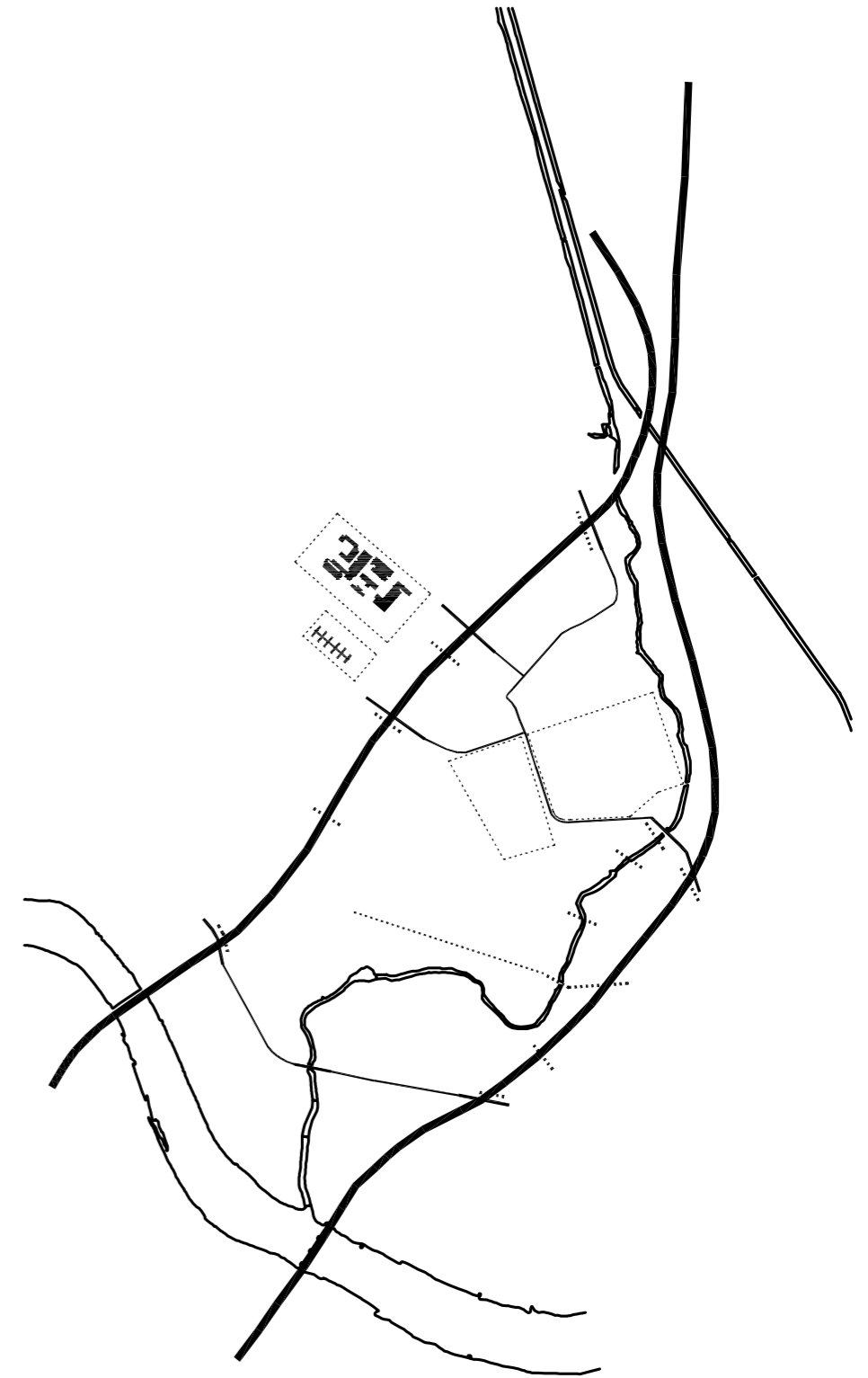
• Project 3 issues •



BARRIERS



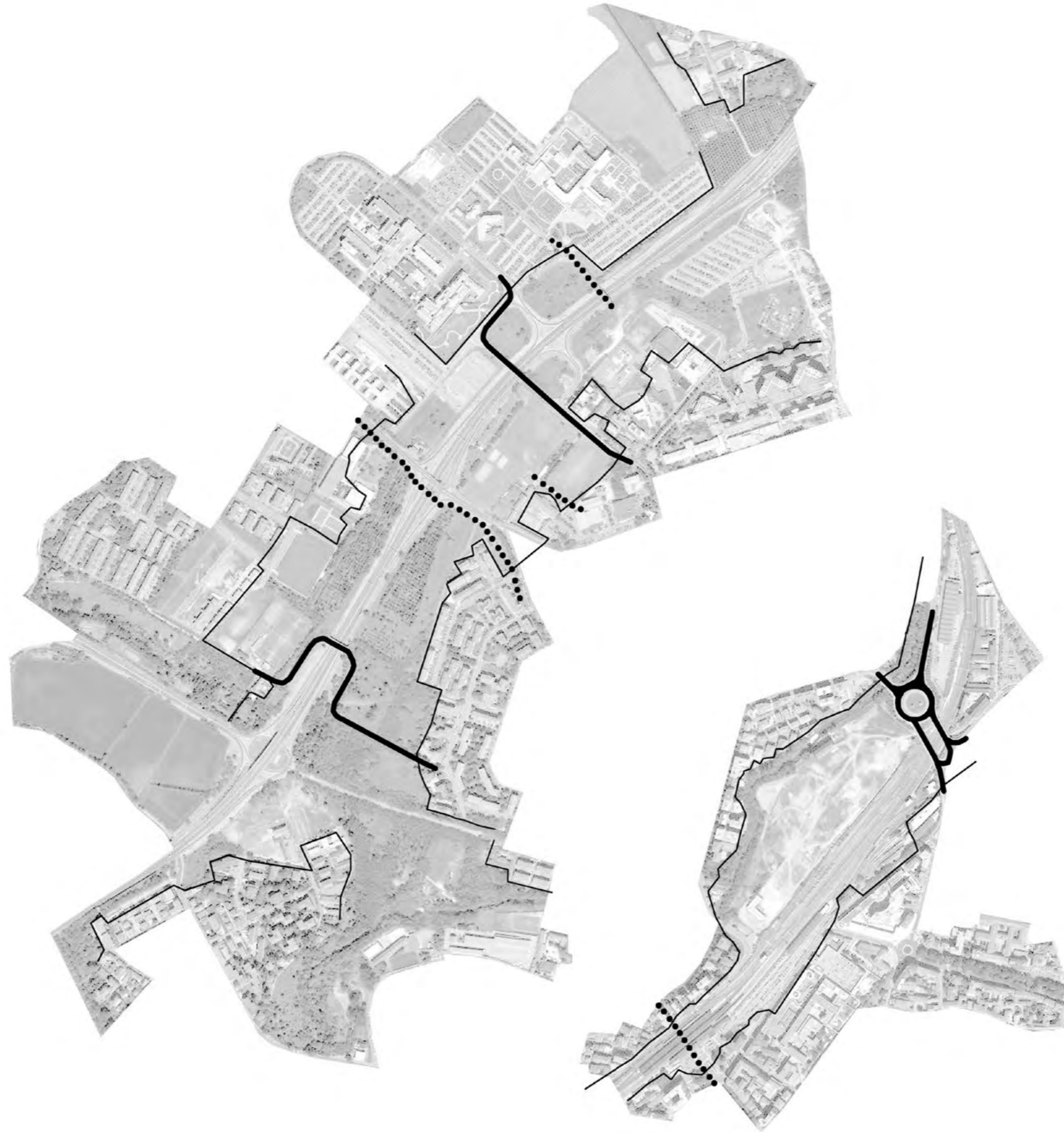
BORDERS



IN BETWEEN CONNECTIONS

ADAPTABLE SURFACES
Creating a dynamic between Campus and City

• Existing connections •



ADAPTABLE SURFACES
Creating a dynamic between Campus and City

· Project connections ·



ADAPTABLE SURFACES
Creating a dynamic between Campus and City

• Existing green system •



ADAPTABLE SURFACES
Creating a dynamic between Campus and City

• Project green system •



ADAPTABLE SURFACES
Creating a dynamic between Campus and City

• Spaces of opportunity •



ADAPTABLE SURFACES
Creating a dynamic between Campus and City

• Existing programatic matrix in the natural border•



residential		J	F	M	A	M	J	J	A	S	O	N	D
	inhabitants												
	students												
	tourists												
knowledge	events												
	education												
	research												
leisure	events												
	cultural												
	physical (in)												
	physical (out)												
commercial	events												
	nomadic activities												
	sedentary activities												

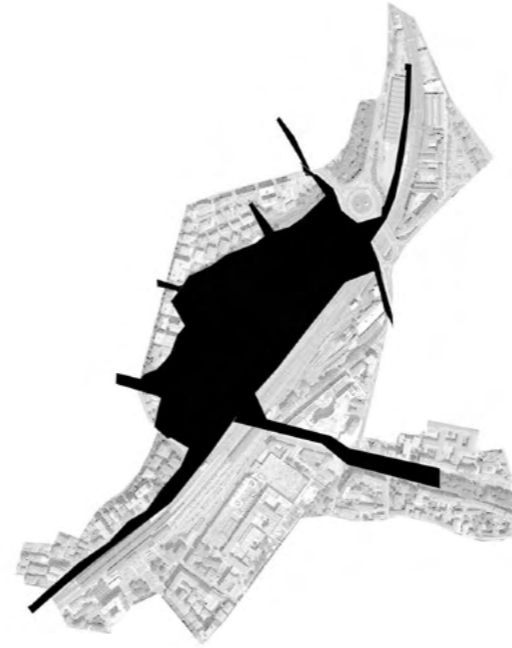
• Project: filling the programatic voids •



		J	F	M	A	M	J	J	A	S	O	N	D
residential	inhabitants	█	█	█	█	█	█	█	█	█	█	█	█
	students	□	□	□	□	□	█	█	█	█	□	□	□
	tourists												
knowledge	events		□	█	□	█			□	█		█	□
	education	□	□	□	□	□	█	█	█	█	□	□	□
	research	□	□	□	□	□	█	█	█	█	□	□	□
leisure	events		□	█	□	█			□	█		█	□
	cultural	█	□	□	█	█	█			█		█	
	physical (in)	█	█	█					█	█	█	█	█
	physical (out)			□	□	□	□	□	□	□			
commercial	events	█				█			█	□	█		
	nomadic activities	□	█		█	█			█	□	█	█	
	sedentary activities	█	█	█	█	█	█	█	█	█	█	█	█

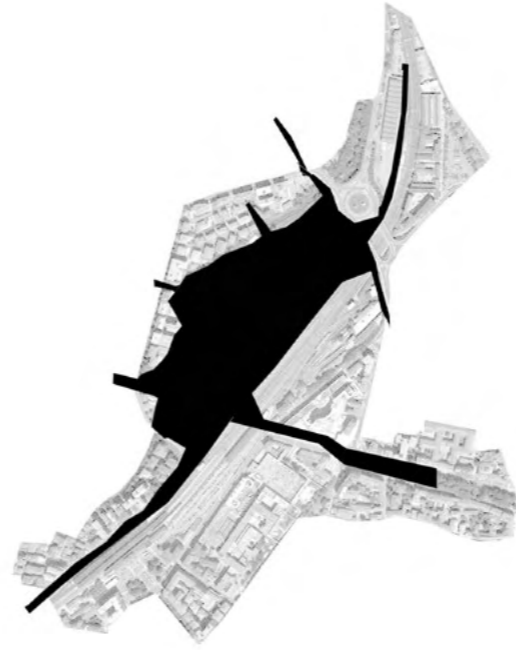
ADAPTABLE SURFACES
Creating a dynamic between Campus and City

• Existing programatic matrix in the mineral border•



		J	F	M	A	M	J	J	A	S	O	N	D
residential	inhabitants												
	students												
	tourists												
knowledge	events												
	education												
	research												
	events												
leisure	cultural												
	physical (in)												
	physical (out)												
	events												
commercial	events												
nomadic activities													
sedentary activities													

• Project: filling the programatic voids •



residential

inhabitants

students

tourists

knowledge

events

education

research

leisure

events

cultural

physical (in)

physical (out)

commercial

events

nomadic activities

sedentary activities

J F M A M J J A S O N D

						■	■	■				
		■		■					■	■		
	■			■				■	■			
					■	■	■	■				
						■						

ADAPTABLE SURFACES

Creating a dynamic between Campus and City

• Example of intervention in the natural border •



ADAPTABLE SURFACES
Creating a dynamic between Campus and City

• Inserting mineral surfaces into the natural border •



ADAPTABLE SURFACES
Creating a dynamic between Campus and City

• Example of intervention in the mineral border •



ADAPTABLE SURFACES
Creating a dynamic between Campus and City

• Inserting green surfaces into the mineral border •



ADAPTABLE SURFACES
Creating a dynamic between Campus and City



ADAPTABLE SURFACES

Creating a dynamic between Campus and City