

## CREATING AN INTER-CAMPUS DYNAMIC AXIS

TEAM 3 - “OPEN UP PAVIA“



Historically the University of Pavia was located in the very heart of the city, in a building with a series of courtyards that multiplied porosity and connections with the urban fabric. As it was in the mood of time, the new campus Cravino was built in the 70's at the Western edge of the city, well deserved by a ring road but poorly accessible for pedestrians and bicycles. The campus itself is monofunctional, only occupied by university facilities that are closed at night and in the weekends, whereas services and student accommodations are missing.

At present, the transfer of the San Matteo hospital area located between these two entities raises the question of its future use and gives the opportunity to improve the links between the inner city and the new university campus. The task of the workshop was to create new connections, to requalify and secure the public spaces, to rethink the station area and its surroundings as well as to invest the wasteland at the back of the rail tracks.

In a common discussion with the group on possible conceptual approaches we identified three different strategies, developed by the three teams individually afterwards: A strong linear connection, a careful work on the two currently vacant contact spaces and a network of smaller relationships. These scenarios open a broad field of possibilities, thus opening a debate between the city of Pavia and its university about their common future.

**EUROPAN EUROPE**  
**UNIVERSITÀ DEGLI STUDI DI PAVIA**  
**E12 WINNING TEAMS**





Potential



Continuity



Interface



Creativity



Scenarios



Interaction



Mixity



Landscape



Intensity



## OPEN UP PAVIA

### CREATING AN INTER-CAMPUS DYNAMIC AXIS



The project interprets the site as a field of possibilities that have to be revealed or reinforced to create a network of resources. To do so, 4 main layers of action are identified and declined all over the area: program, landscape, mobility and policy.

Each intervention is based on the already existing local potential on the site. Small-scale operations start to improve the currently uncomfortable situations, in time, additional actions extend the project until a fine mesh of relationships and activities is established.

The demanded student's accommodations are mixed with additional programs and spread all over the site to activate it, the existing landscape is completed to form a circular natural area around the Ponte di Pietra neighbourhood and the nowadays closed enclaves are opened to increase the porosity and allow for soft mobility. Furthermore, there is an active research in terms of policies of use in the different public and private spaces to reduce their redundancy, investigating a possible sharing in time by mapping the different rhythms of students, tourists and all-time inhabitants during the day, the week and the year.

#### PARTICIPANTS

Amélie ALLIOUX (FR), Runner-up in St-Herblain (FR) with “Permaculture”

Filippo FANCIOTTI (IT), Hugo MAFFRE (FR), Francisco POMARES (ES), Runner-up in Rouen (FR) with “On the Move”

Fabian WALMÜLLER (AT), Runner-up in Paris (FR) with “In Transition – A Local Metropolis”

Miguel Martín DE LA SIERRA (ES), Runner-up in Mannheim (DE) with “Re-Evolution in Mannheim”

Romain GRANOUX (FR), Francois JUSTET (FR), Runner-up in Budapest (HU) with “Manual Towards a Clumsy City”

Joan ALOMAR (ES), Javier IÑIGO (ES), Runner-up in Gjilan (KO) with “Welcome to Urban Wellness” and in Regionale 2016 (DE) with “Kein land für alte Männer”

Kuba PUDO (PL), Ewa ODYJAS (PL), Runner-up in Kalmar (SE) with “Bombelek”

César CANET (FR), Laura CHAVY (FR), Céline FRATTESI BROS (FR), Laetitia PARADIS (FR), Runner-up in Vichy Val d'Allier (FR) with “Archipel des clairières”

Aurélien MASSON (FR), Arnaud DE SAINT LÉGER (FR), Runner-up in München (DE) with “COM-Bined Process”

**COACH:** Jens METZ (DE)

**ASSISTANTS:** Nunzio Davide CACI (IT), Valentina GIACOMETTI (IT)

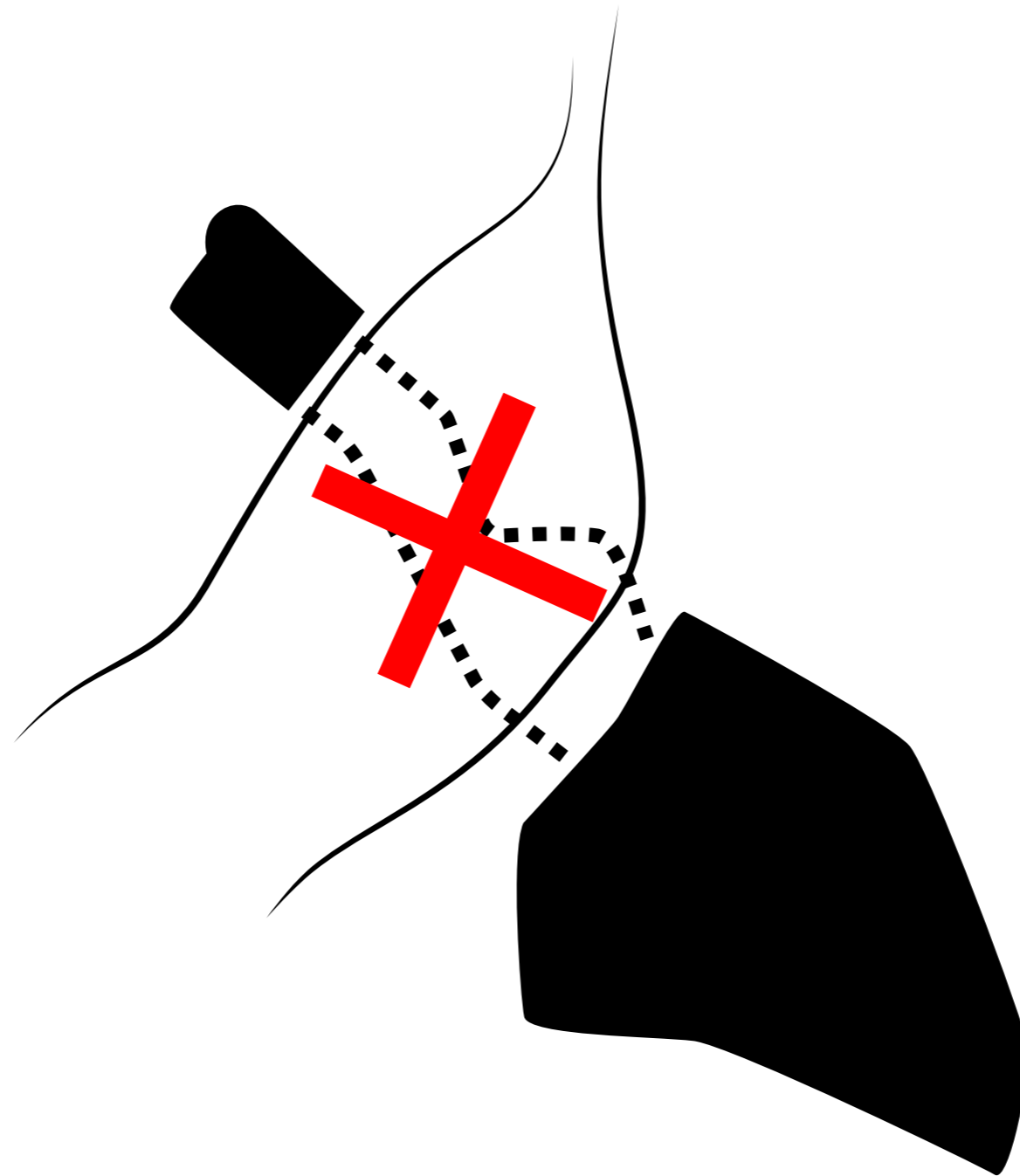


PEN up PAVIA  
“the adaptable campus-city”

Francisco Pomares  
Amelie Allieux  
Filippo fanciotti  
Fabian Walmuller  
Miguel Martín de la Sierra  
Romain Granoux  
Francois Justet  
Hugo Maffre  
Javier Iñigo  
Joan Alomar  
Kuba Pudo  
Ewa Odyjas  
Cesar Canet  
Celine Frattesi Bros  
Laetitia Paradis  
Laura Chavy  
Aurelien Masson  
Arnaud De Saint Leger

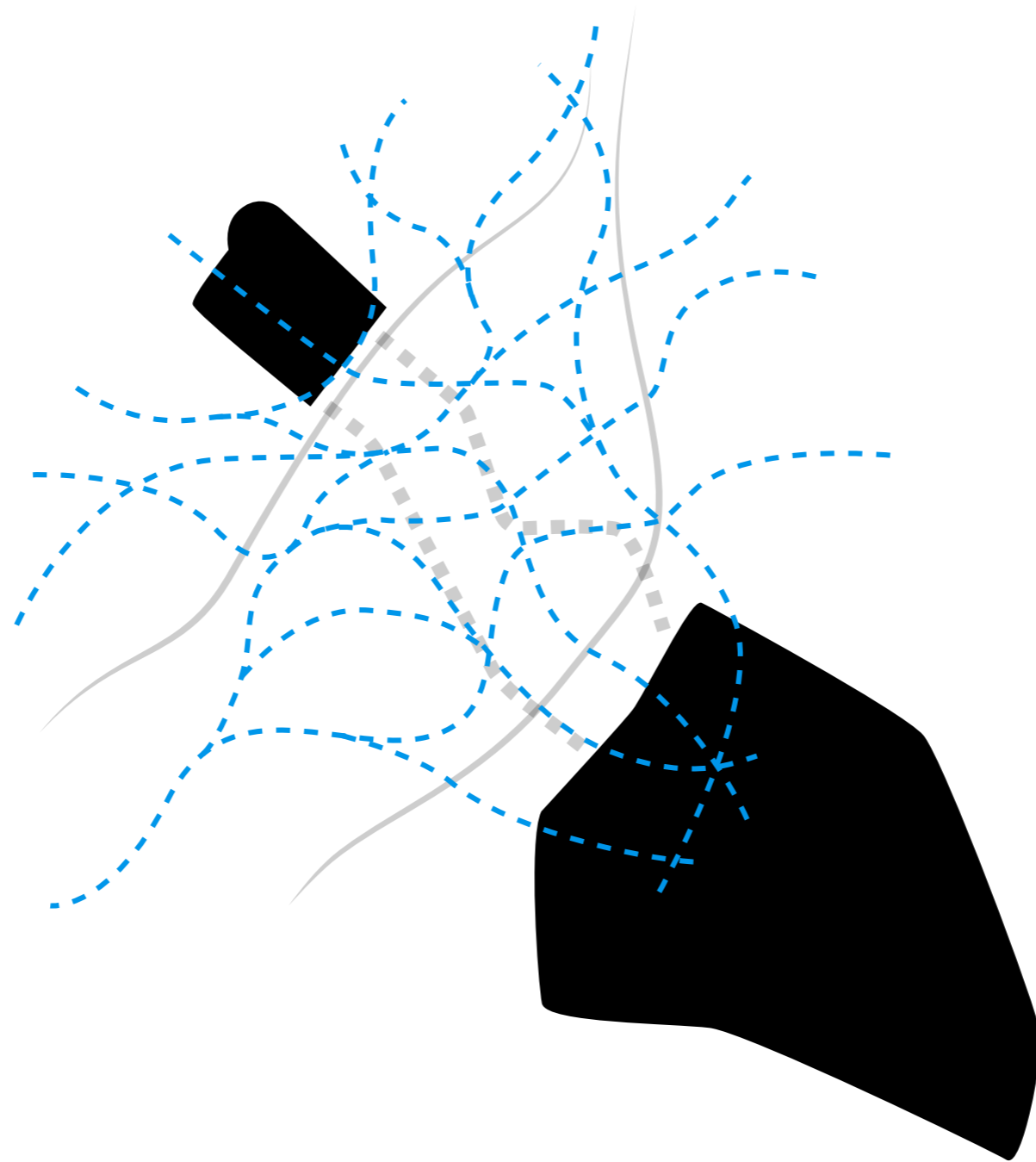


PROBLEM: LINEAR AXIS IS A BARRIER



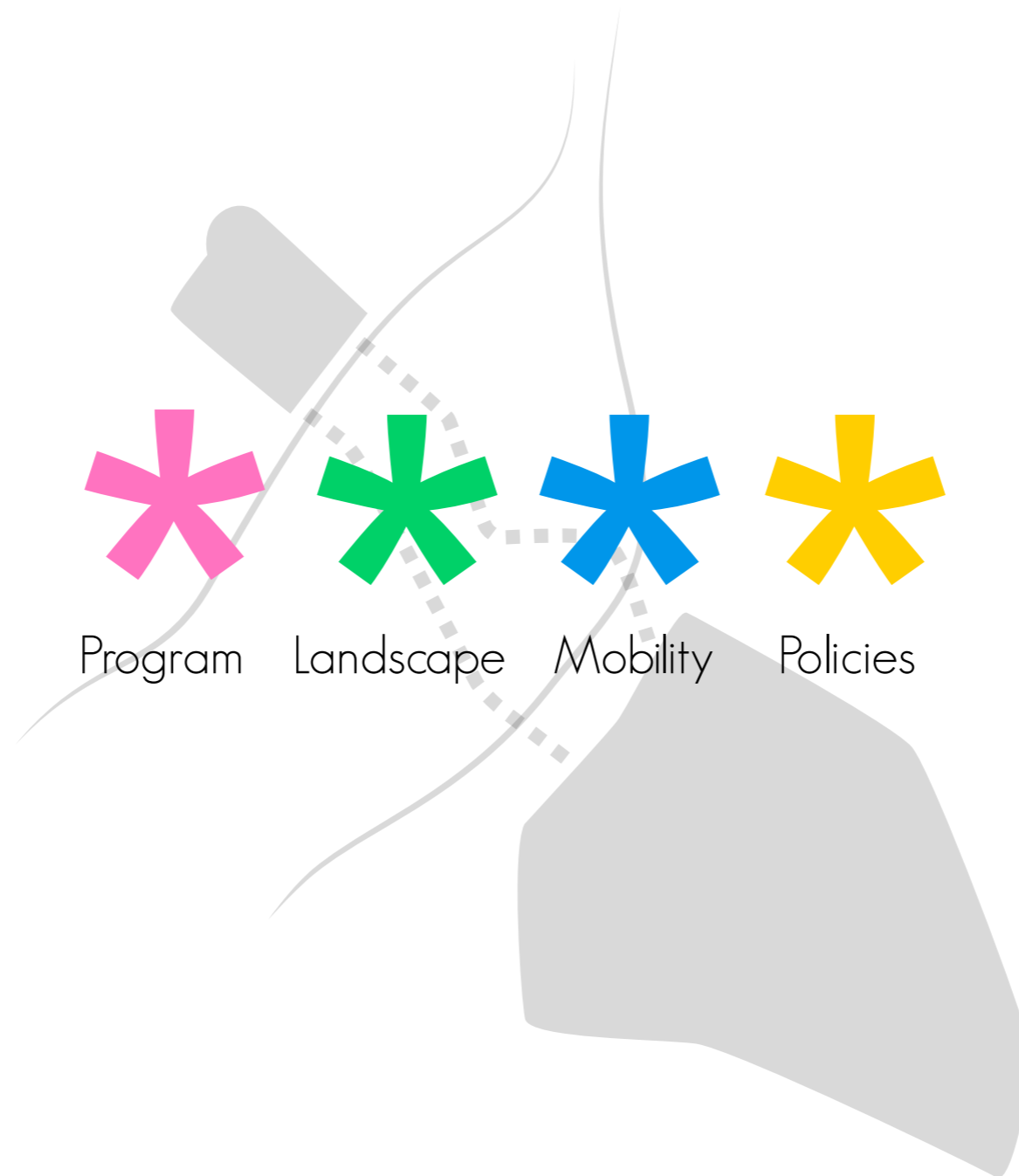


SOLUTION: PROPOSE A SURFACE NETWORK





STRATEGY: 4 LAYERS OF LOCAL INTERVENTIONS

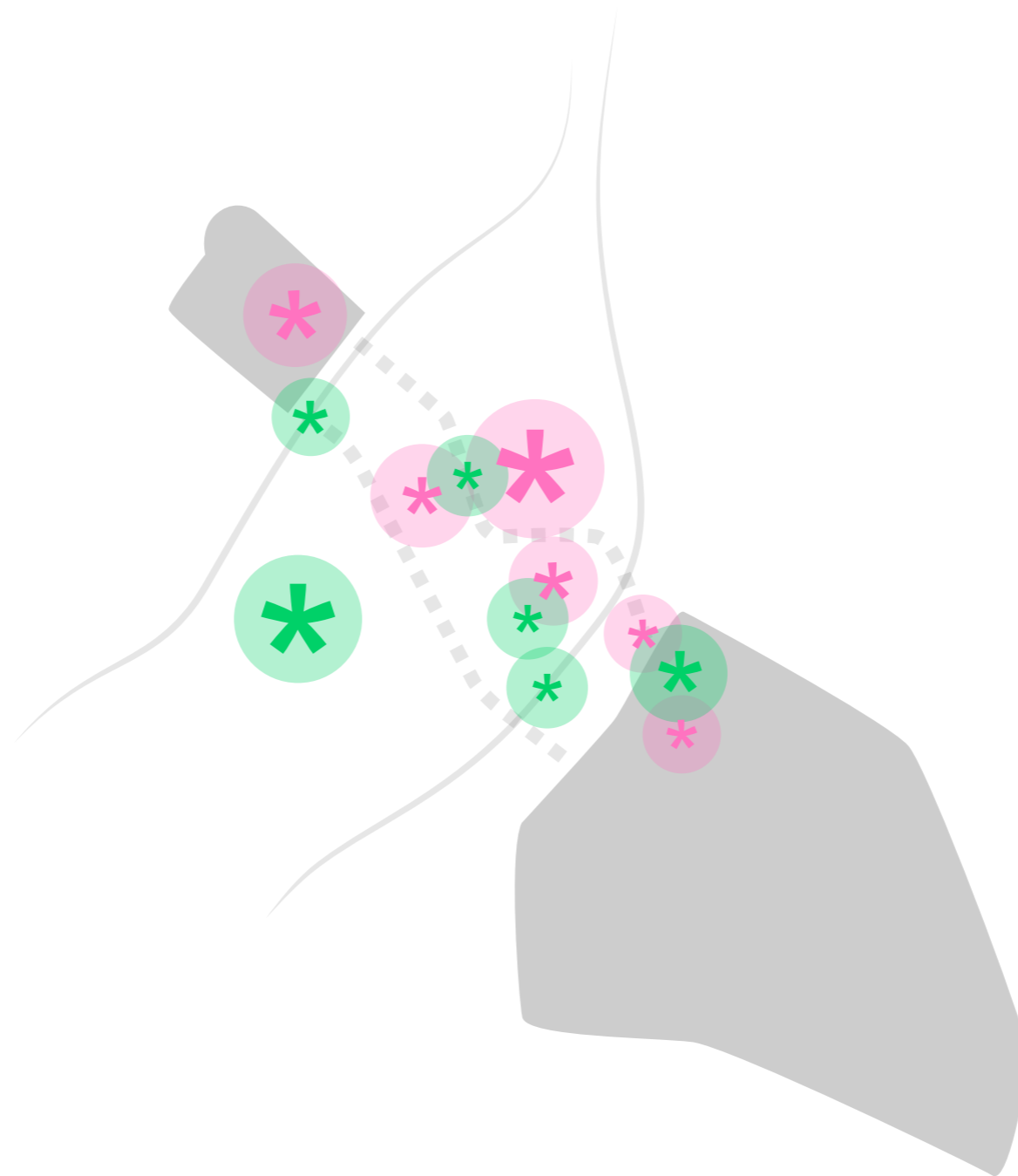






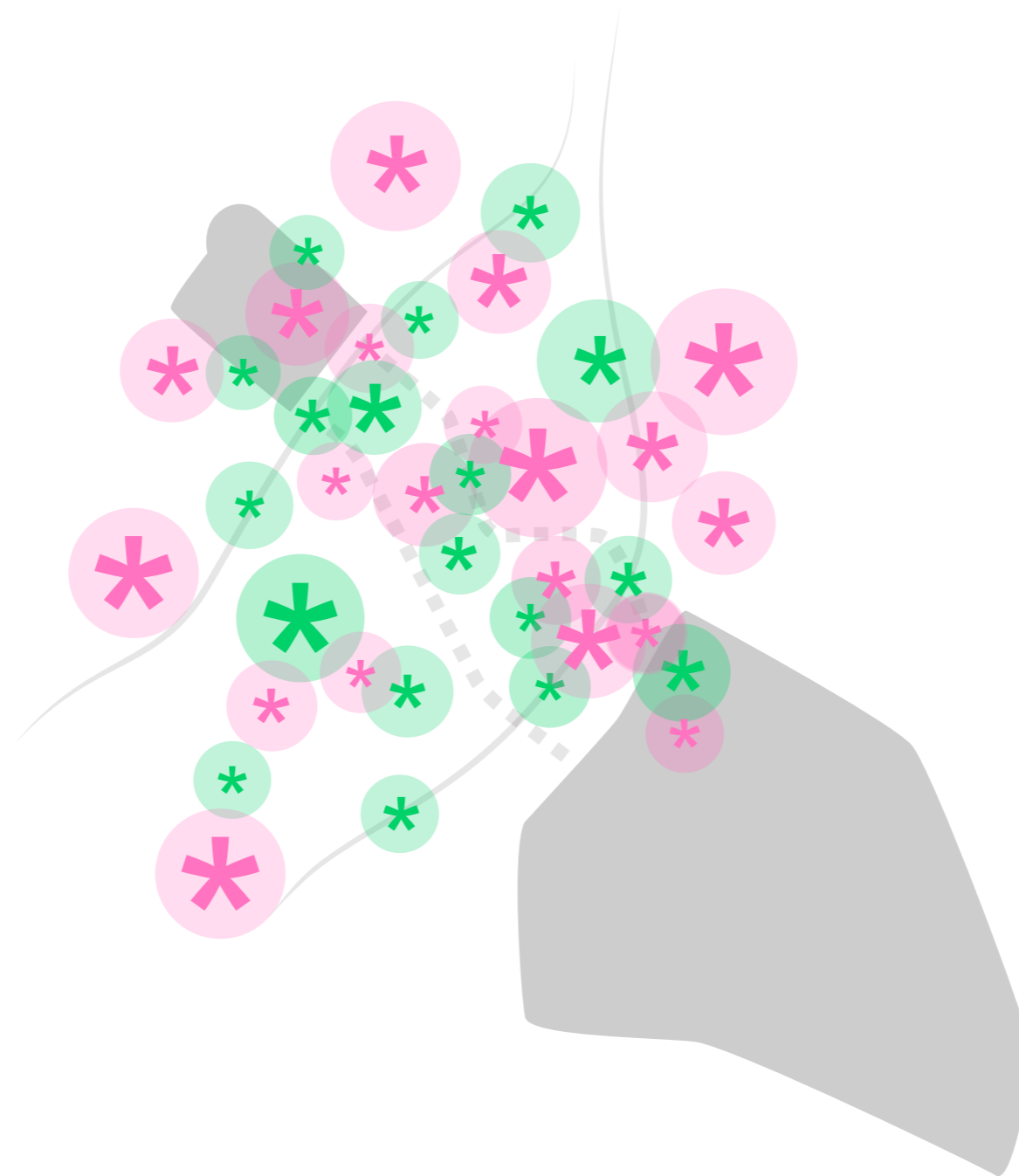


## 2. THE AREAS OF INFLUENCE GENERATE INTERACTIONS AND CONNECTIONS



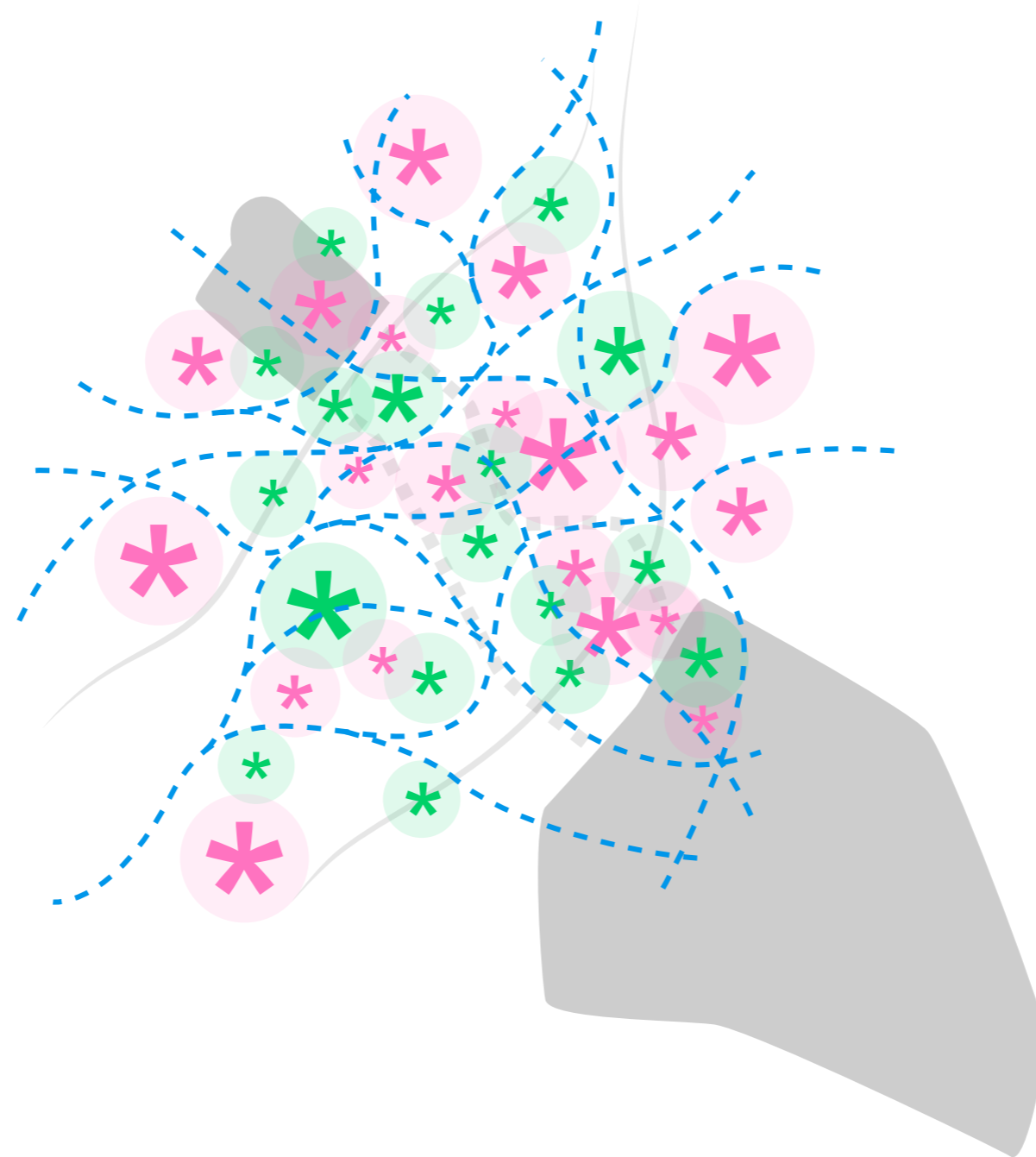


### 3. THE PROCESS EXPANDS OPENING THE CITY: MORE INTERACTIVITY





#### 4. LOCAL INTERVENTIONS WEAVE URBAN TISSUE ENHANCING MIXTURE



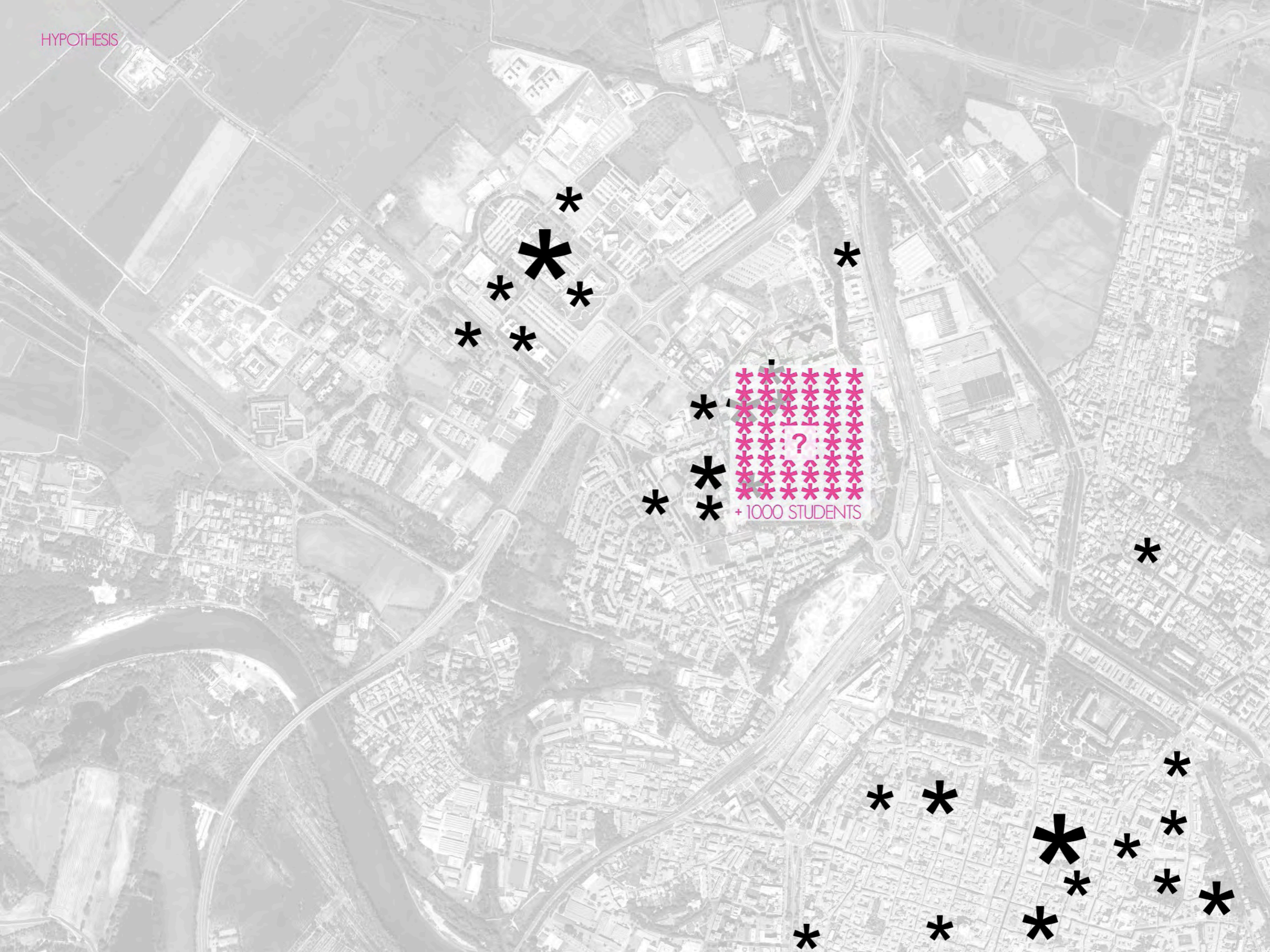
PROGRAM



EXISTING STUDENT PROGRAMS

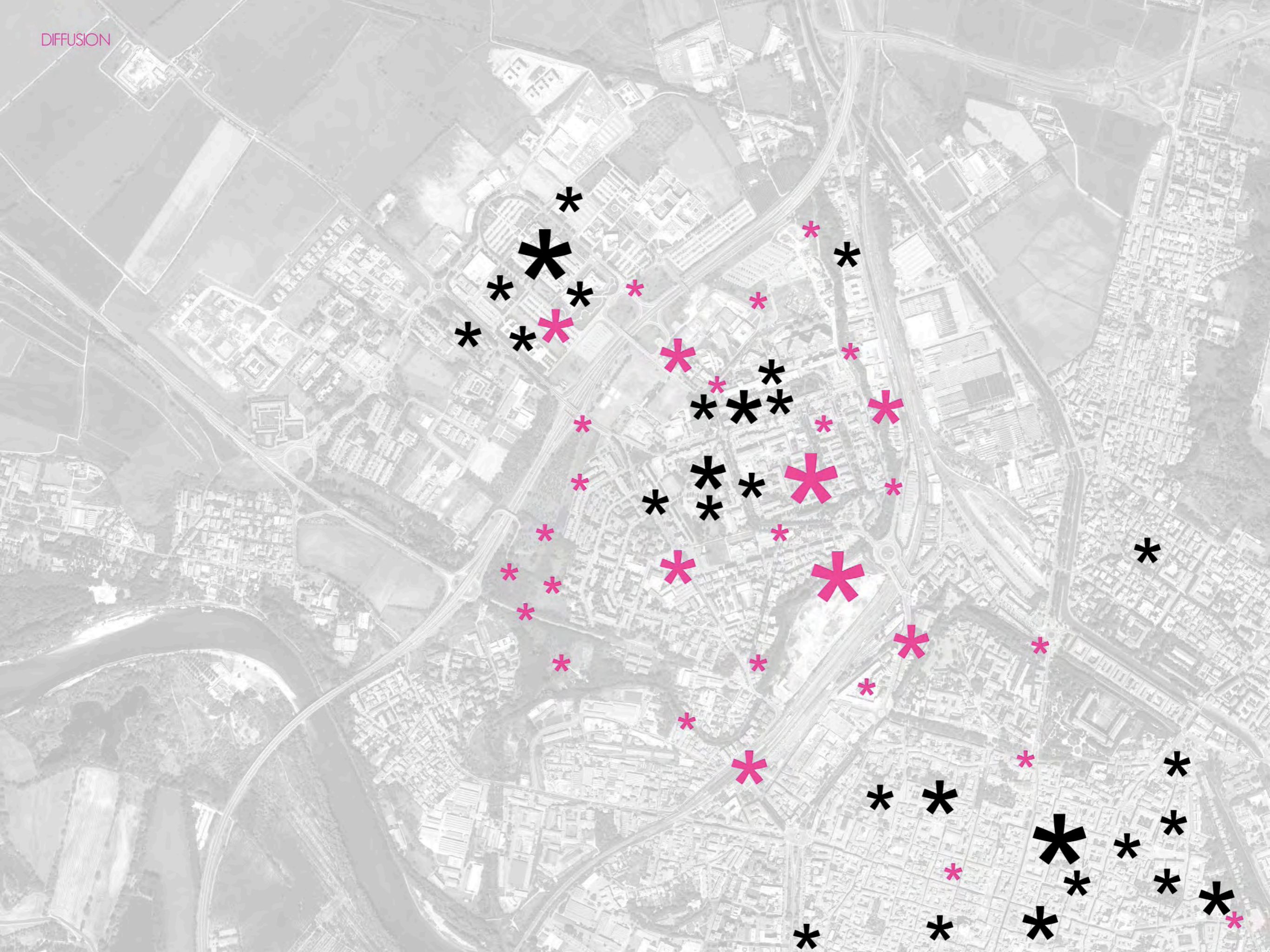






+ 1000 STUDENTS







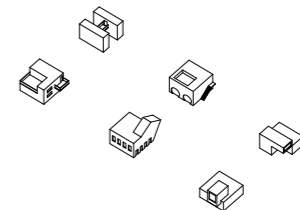
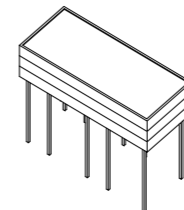
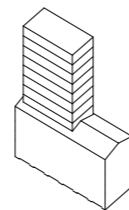
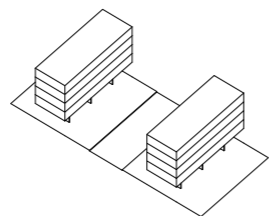
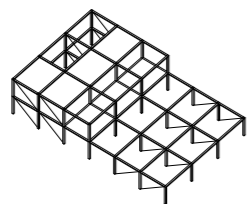
STUDENT HOUSING

+

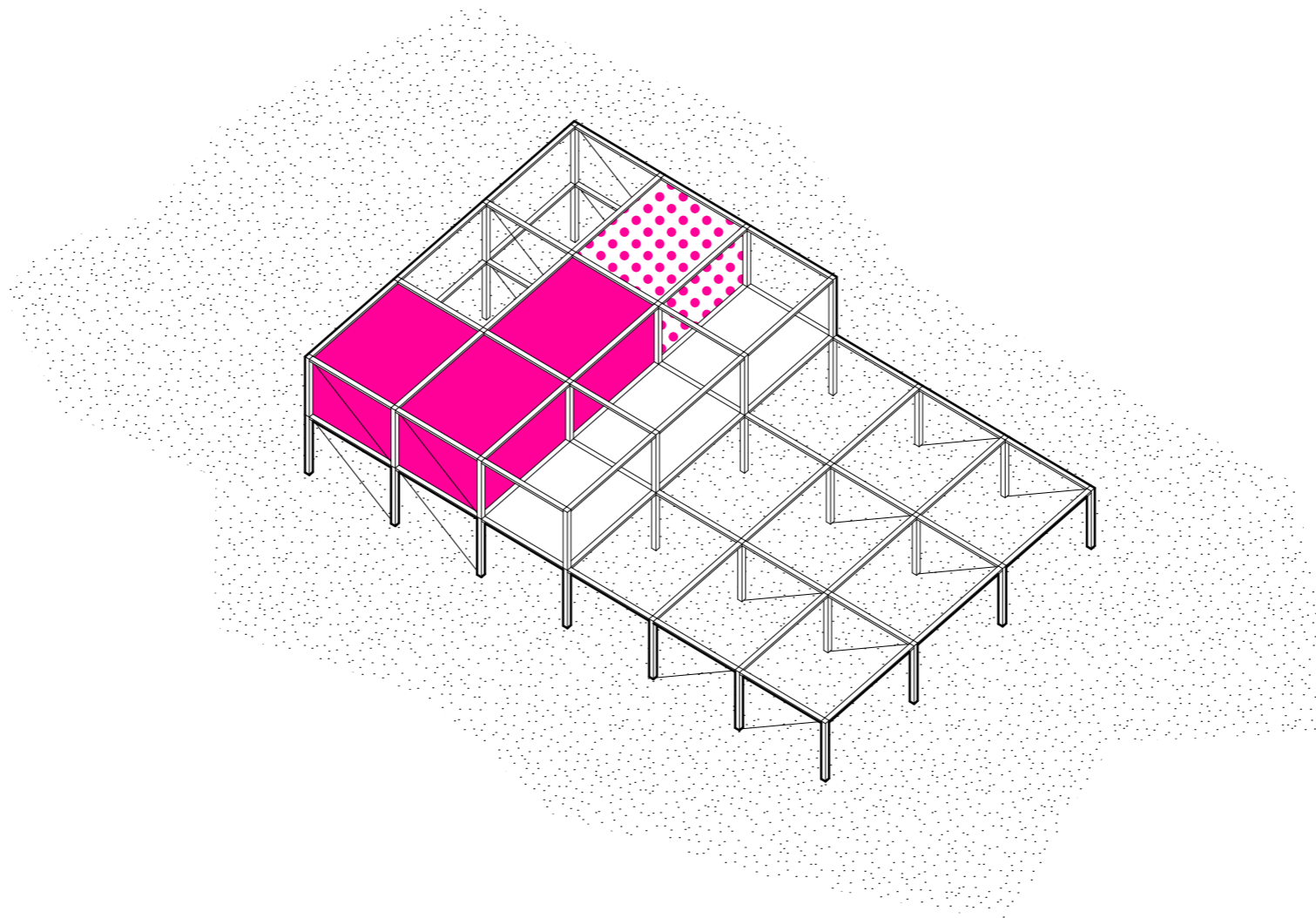
URBAN FONCTION

=

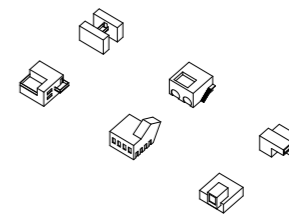
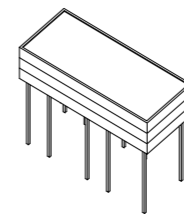
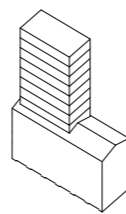
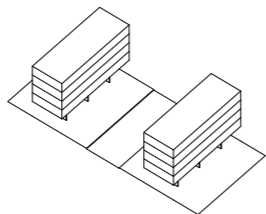
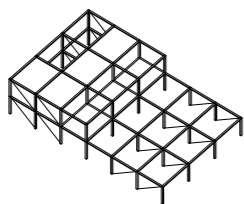
NEW TYPOLOGIE

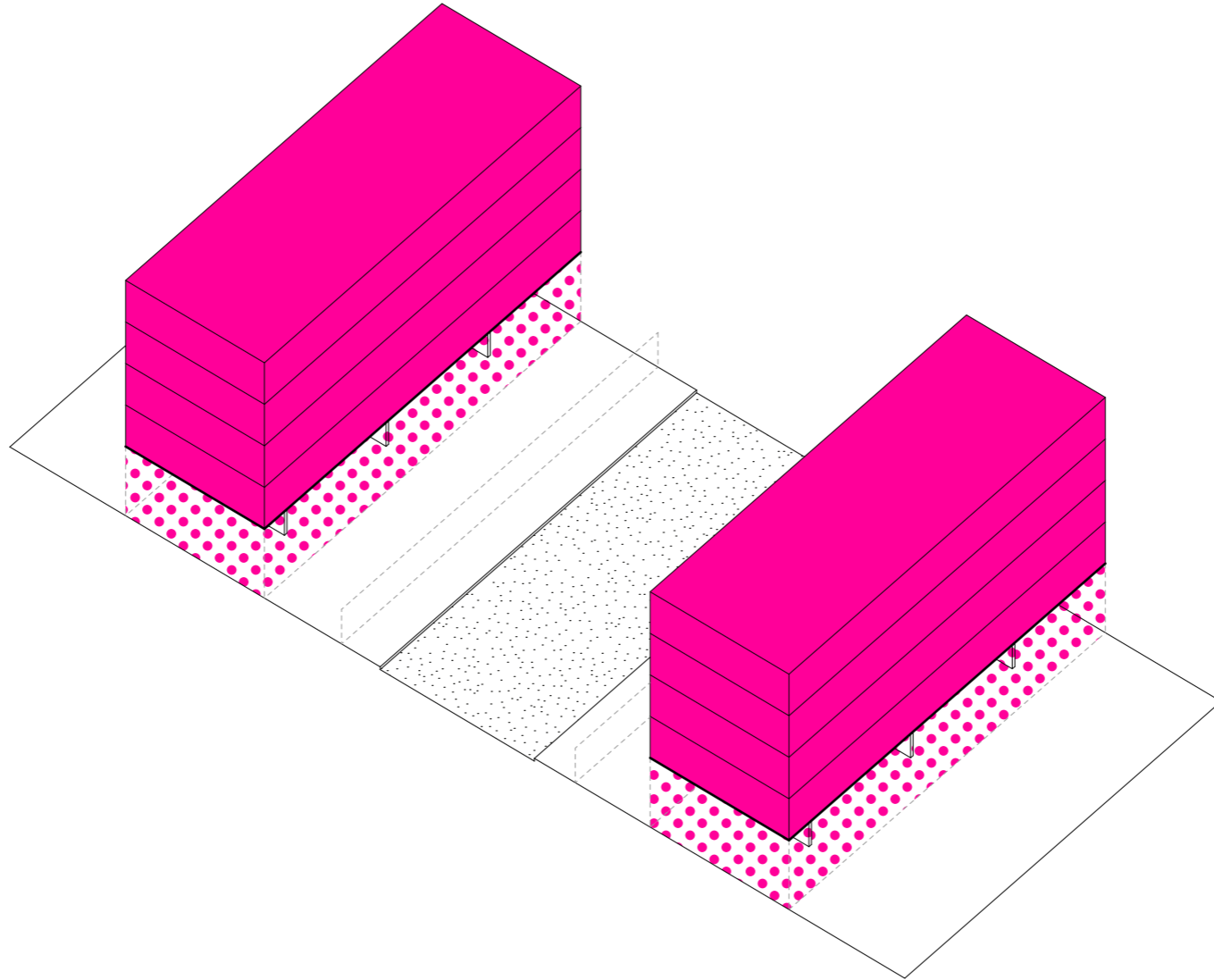




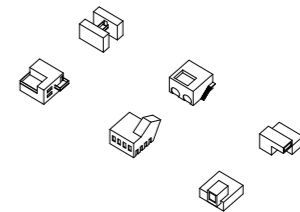
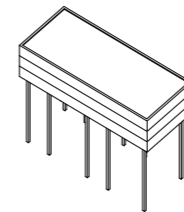
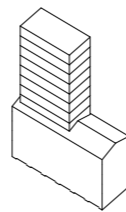
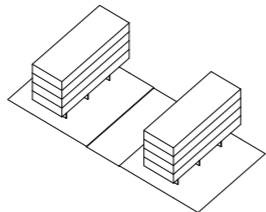
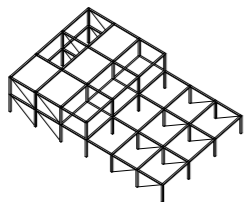


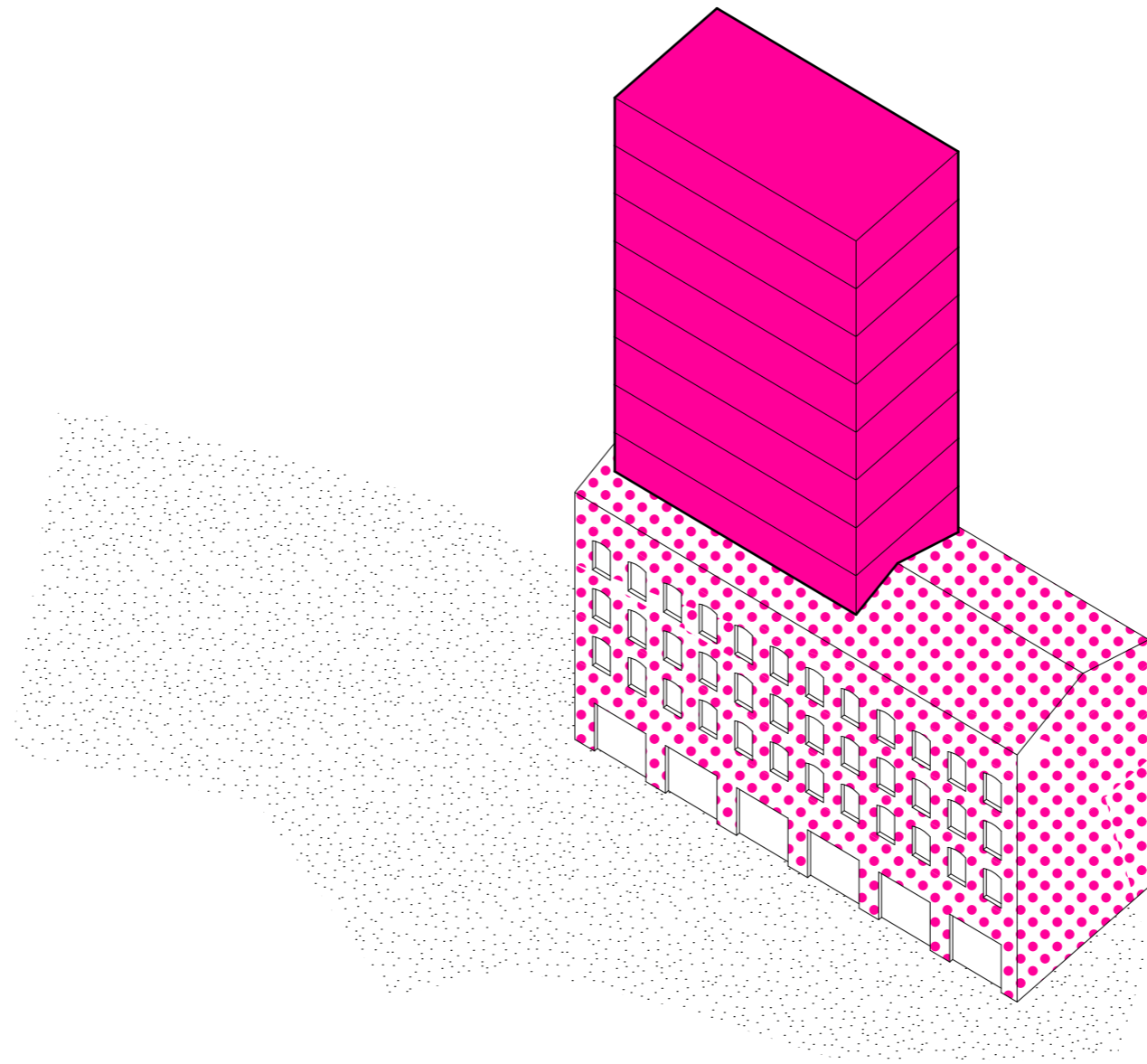
MODULAR STRUCTURES



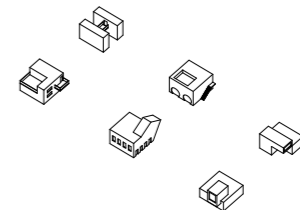
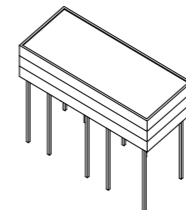
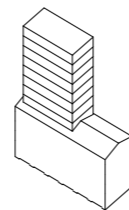
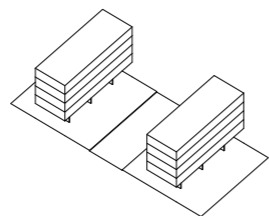
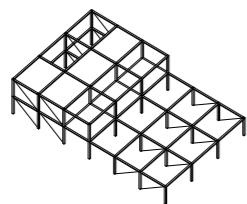


OPENED GROUND FLOOR

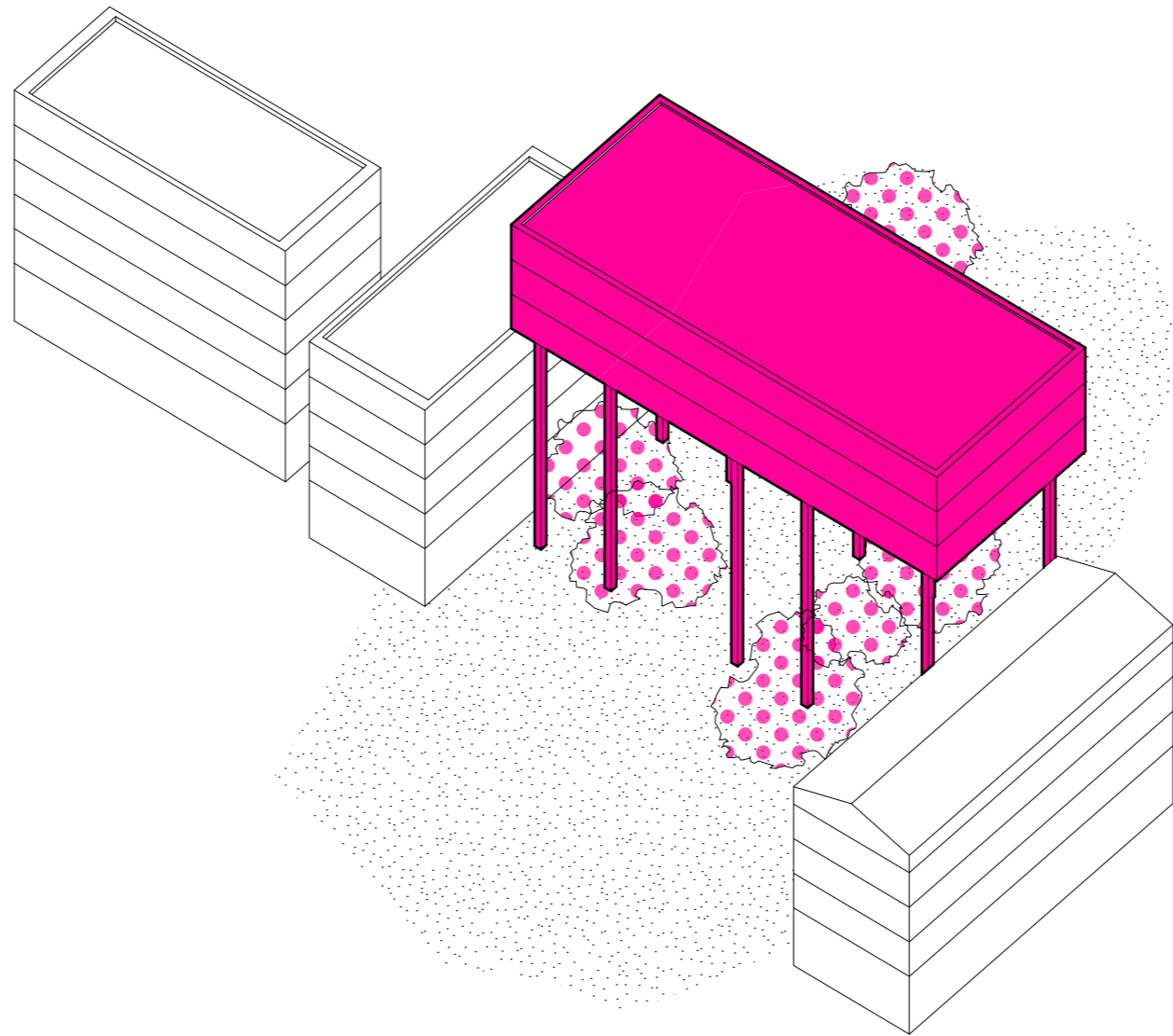




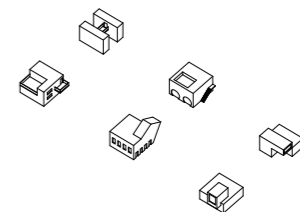
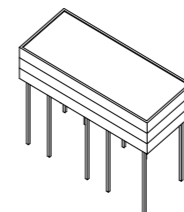
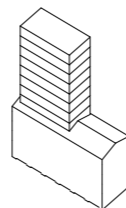
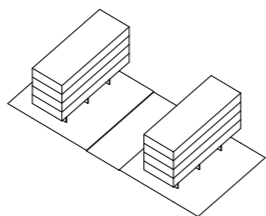
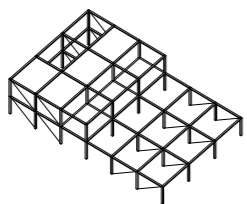
REHAB + STACK

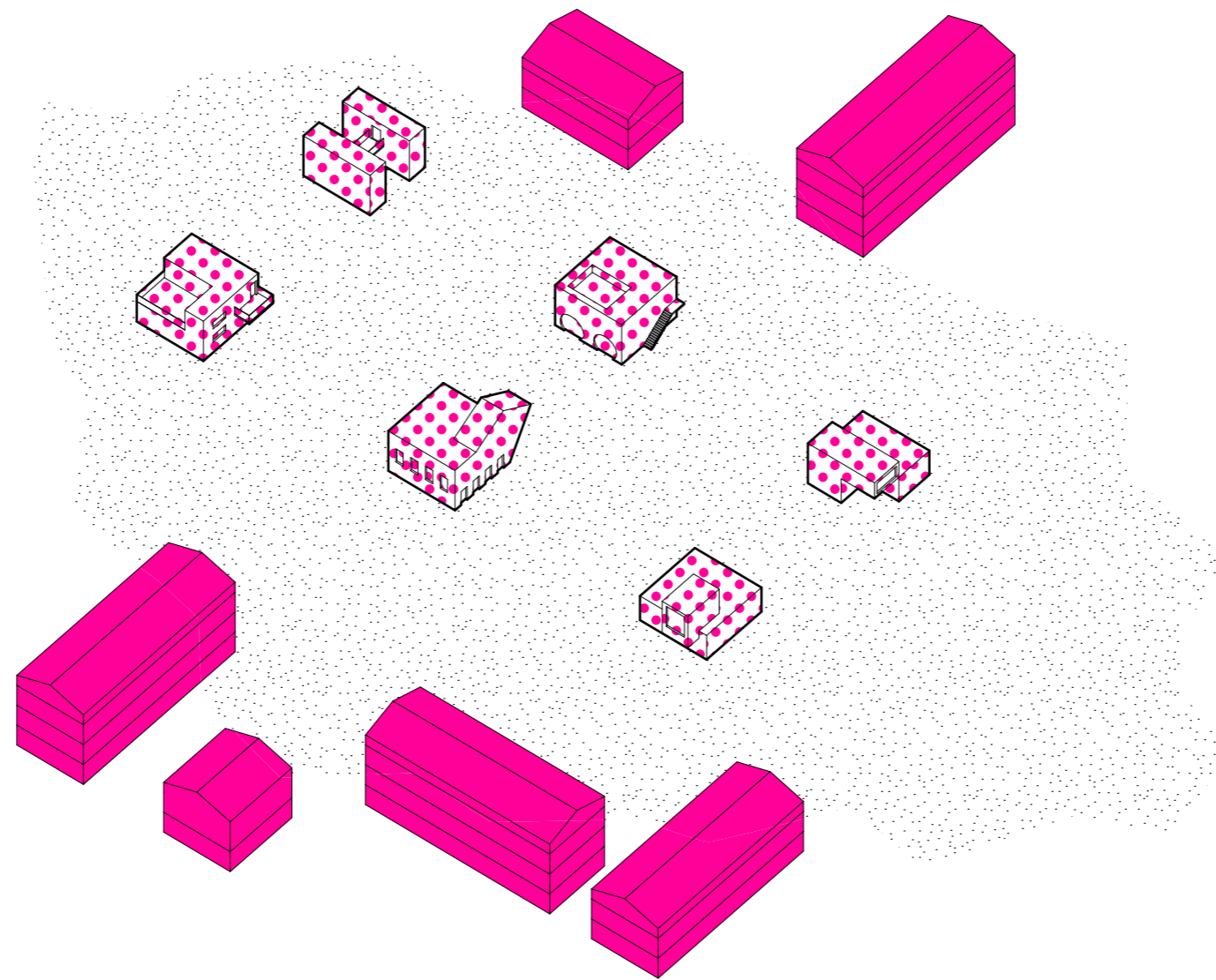




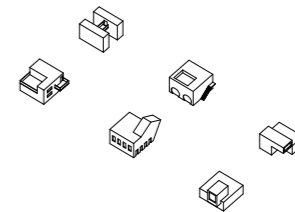
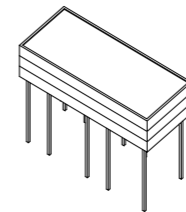
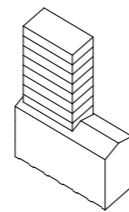
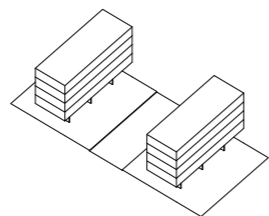
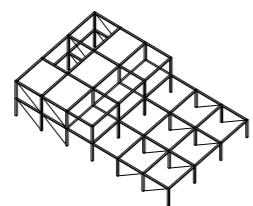


NEW URBAN LAYER





FOLIES



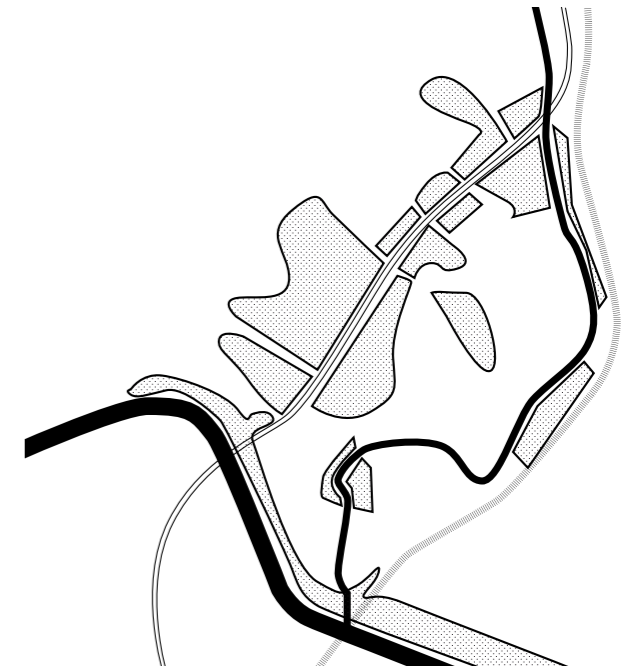
LANDSCAPE



# THE PROCESS

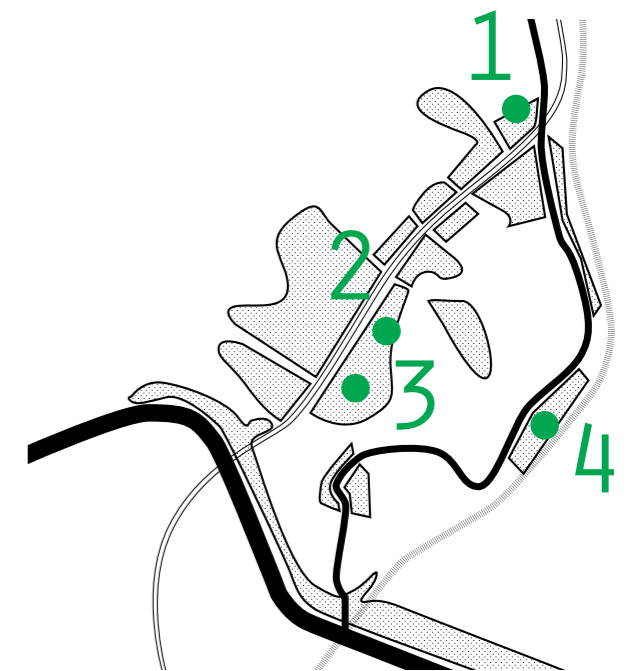


# CURRENT SITUATION

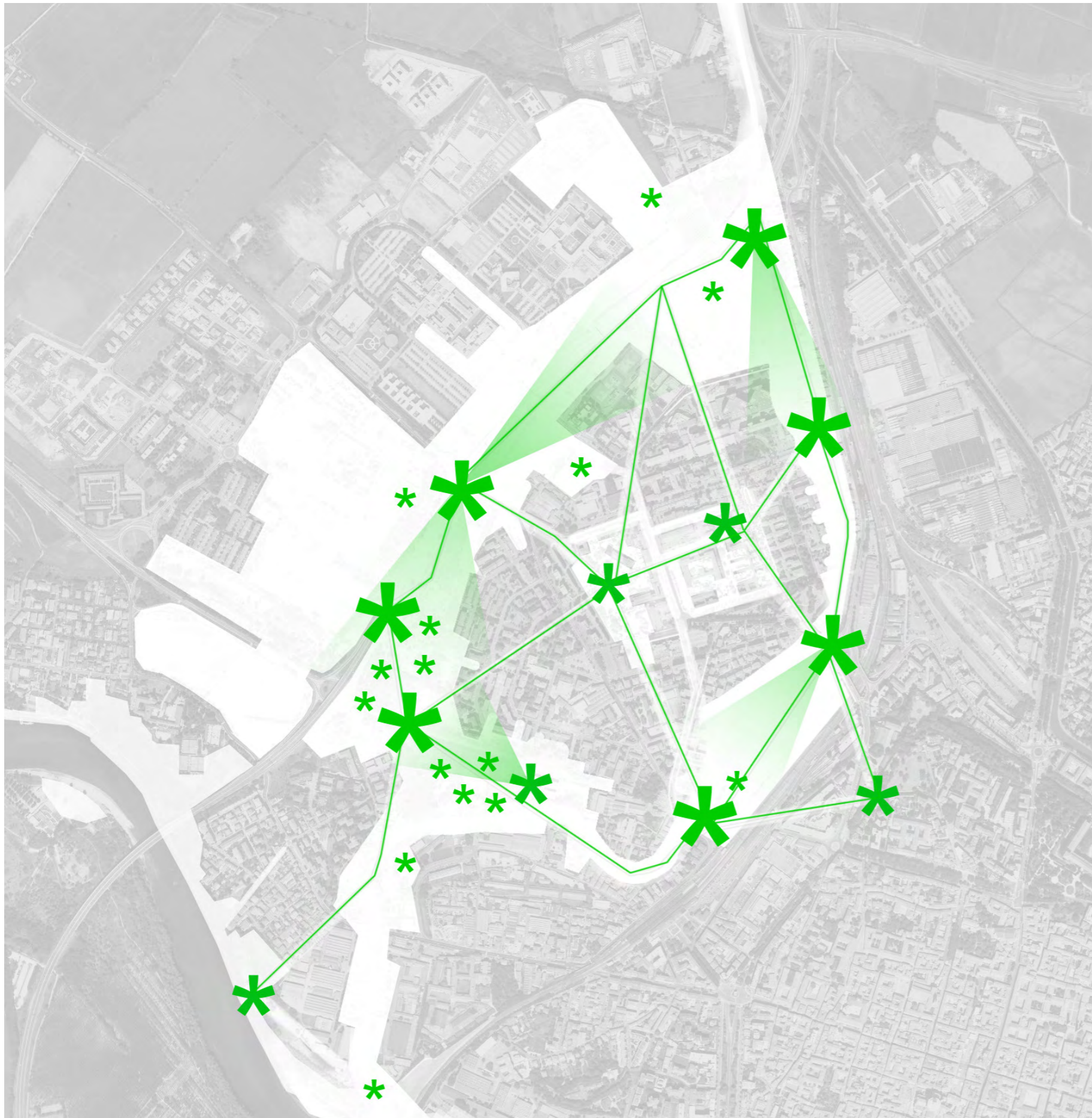




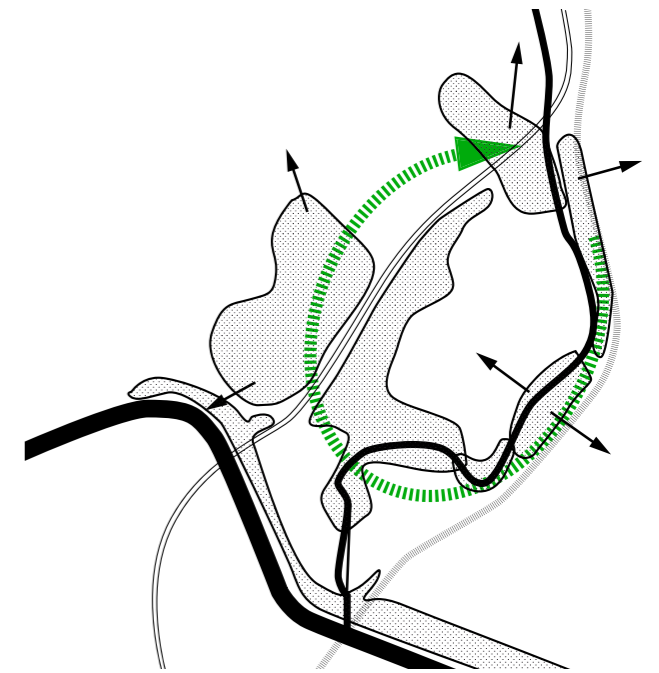
# POTENTIAL QUALITIES





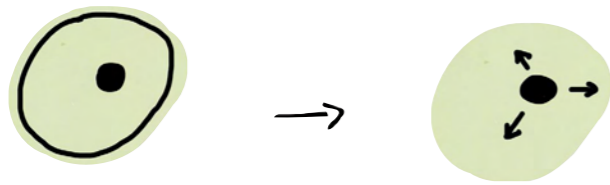


CONCEPT SCHEME



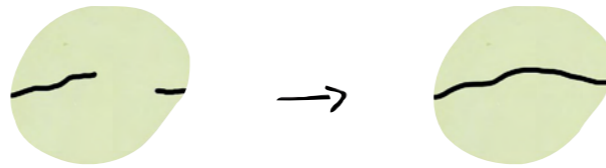


# ADAPTATION TOOLS



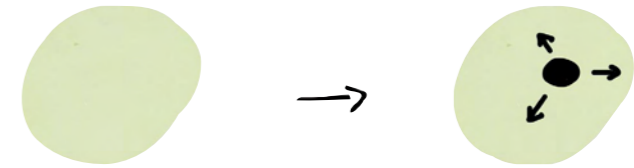
OPEN

delete barriers - remove fences  
perforate - sign the direction - invite



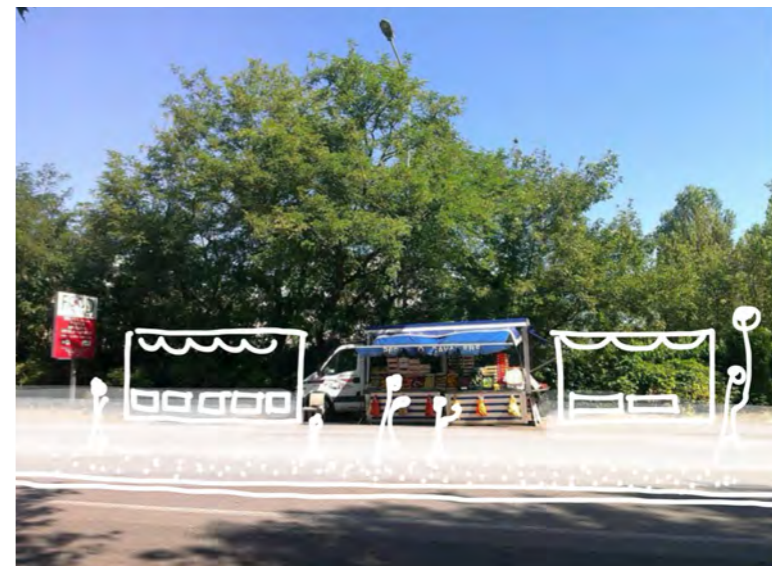
REPAIR

Clean - reconnect ways - re-use  
capture the views - refresh



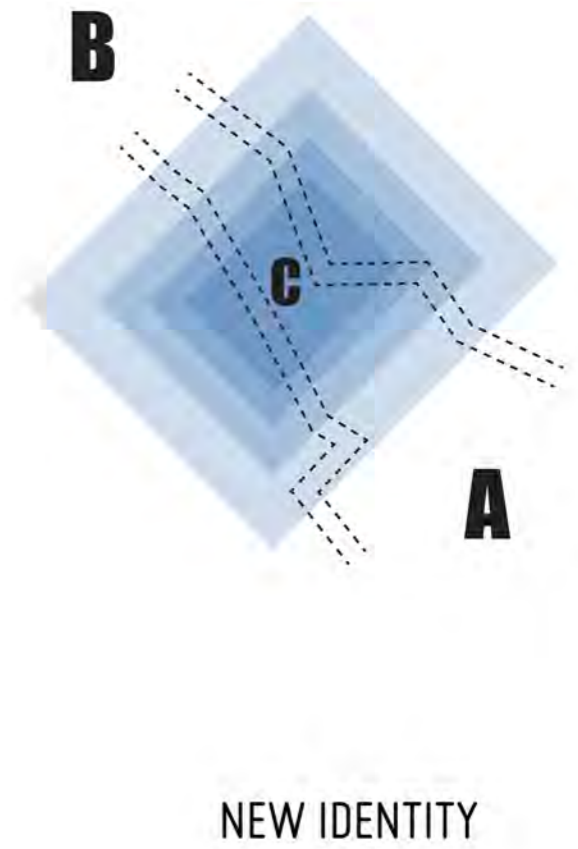
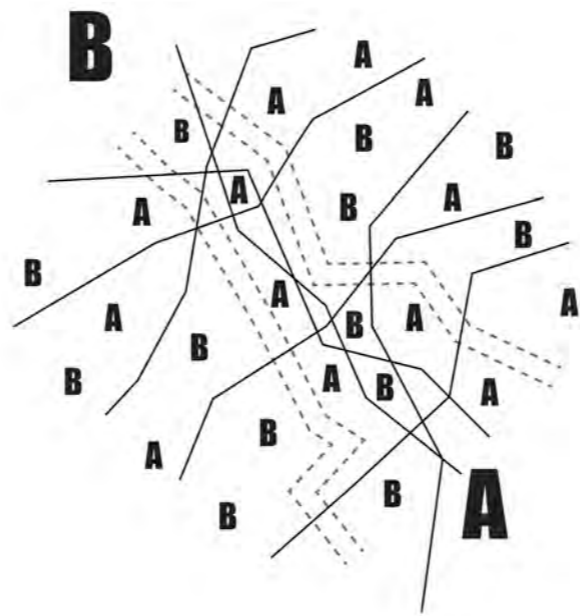
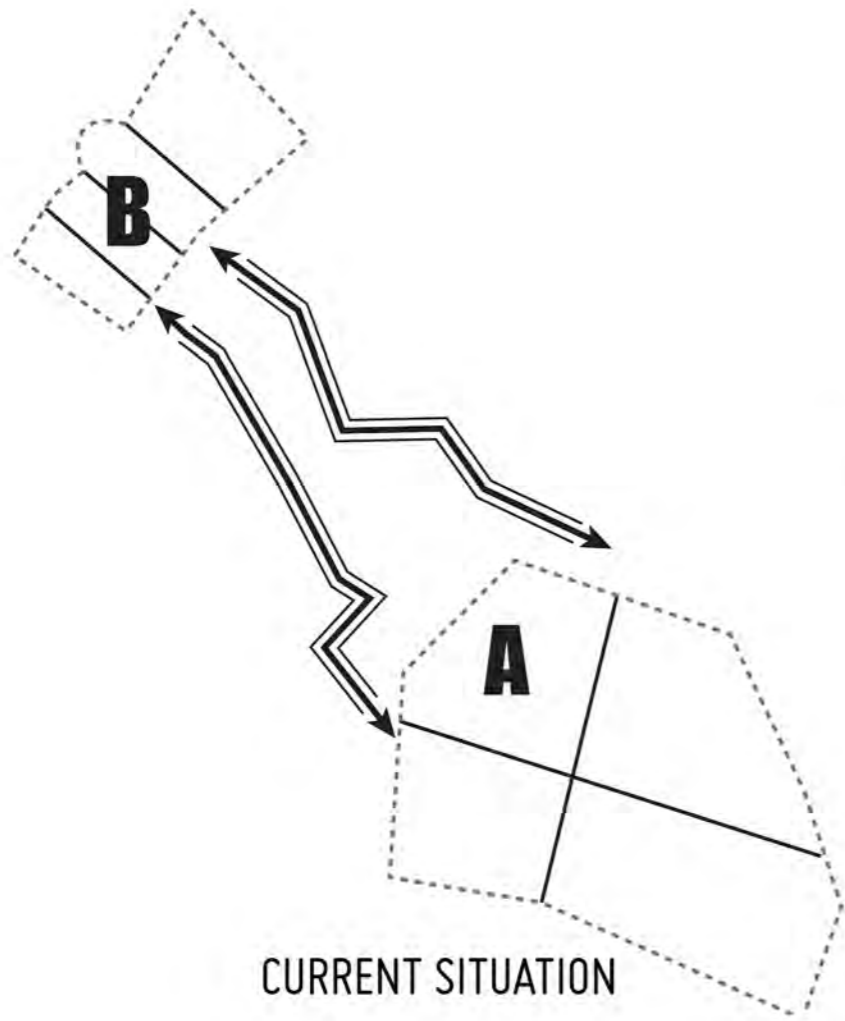
ADD

points of view - amenities - facilities



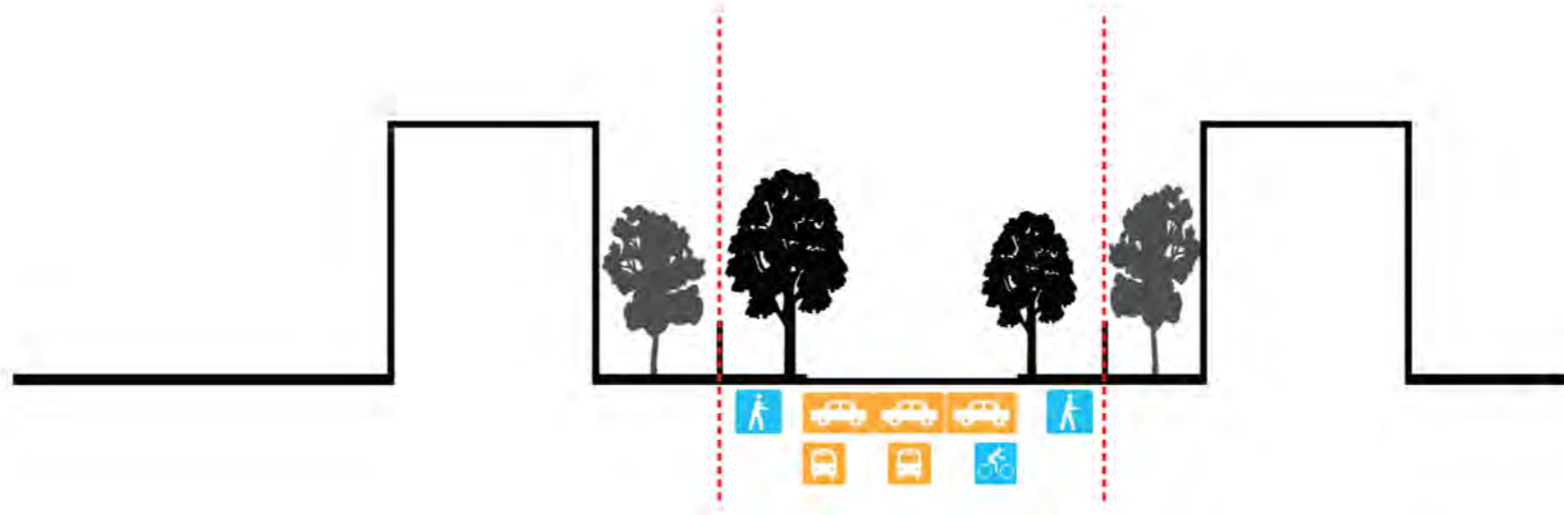
MOBILITY





### CURRENT SITUATION

- disconnection
- car dominated



### NEW MOBILITY CONCEPT

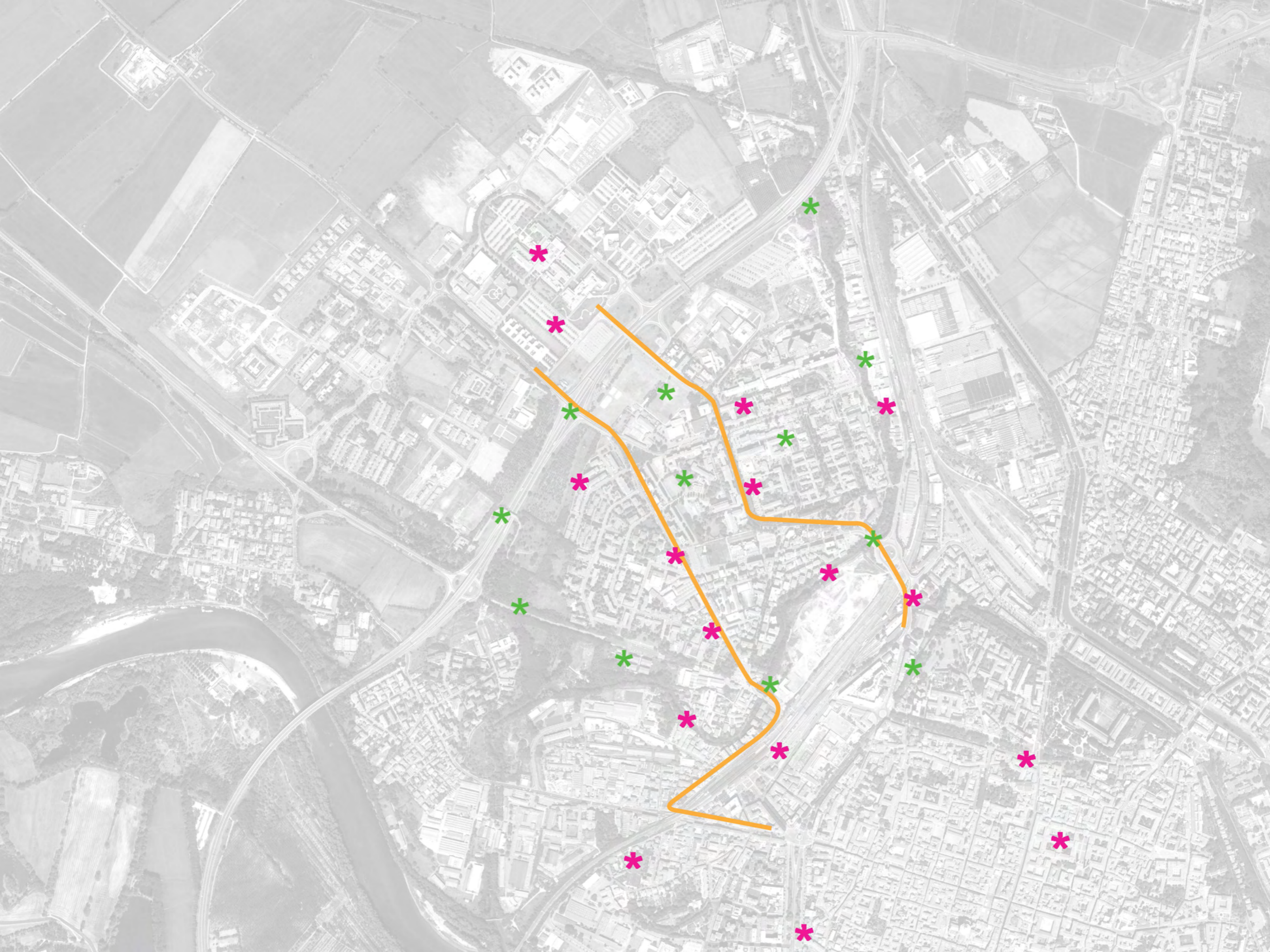
- free public space
- soft mobility priority
- single private car lane



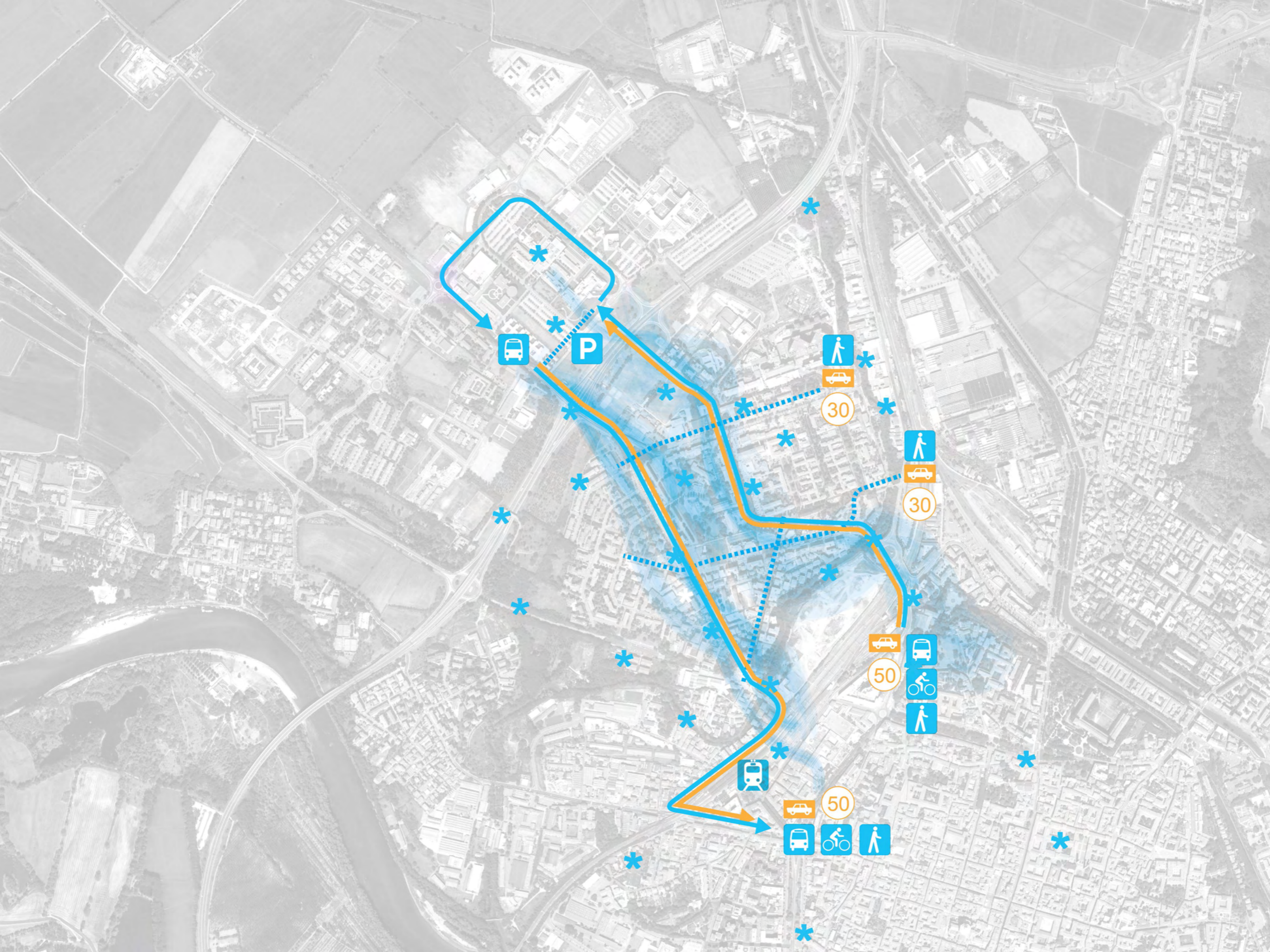
### PERMEABILITY + PUBLIC PROGRAM

















POLICIES



2015

2020

2025

2030

2035

Campus



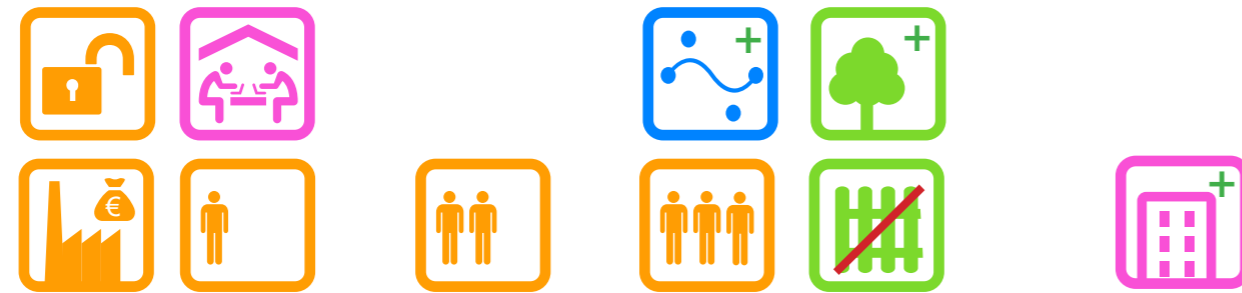
Folies parc



Hospital



Factory



Parking lots



January

March

June

September

December



Nomadic people housing

ONE YEAR- INHABITATION

Monday

Friday

Sunday



Nomadic people housing

ONE WEEK - INHABITATION



Monday

Friday

Sunday



ONE WEEK - WASTE OPEN SPACE

00:00

06:00

12:00

18:00

24:00



ONE DAY - WASTE OPEN SPACE

# TRANSFORMATIONS









SITE 1 \*

SITE 2 \*

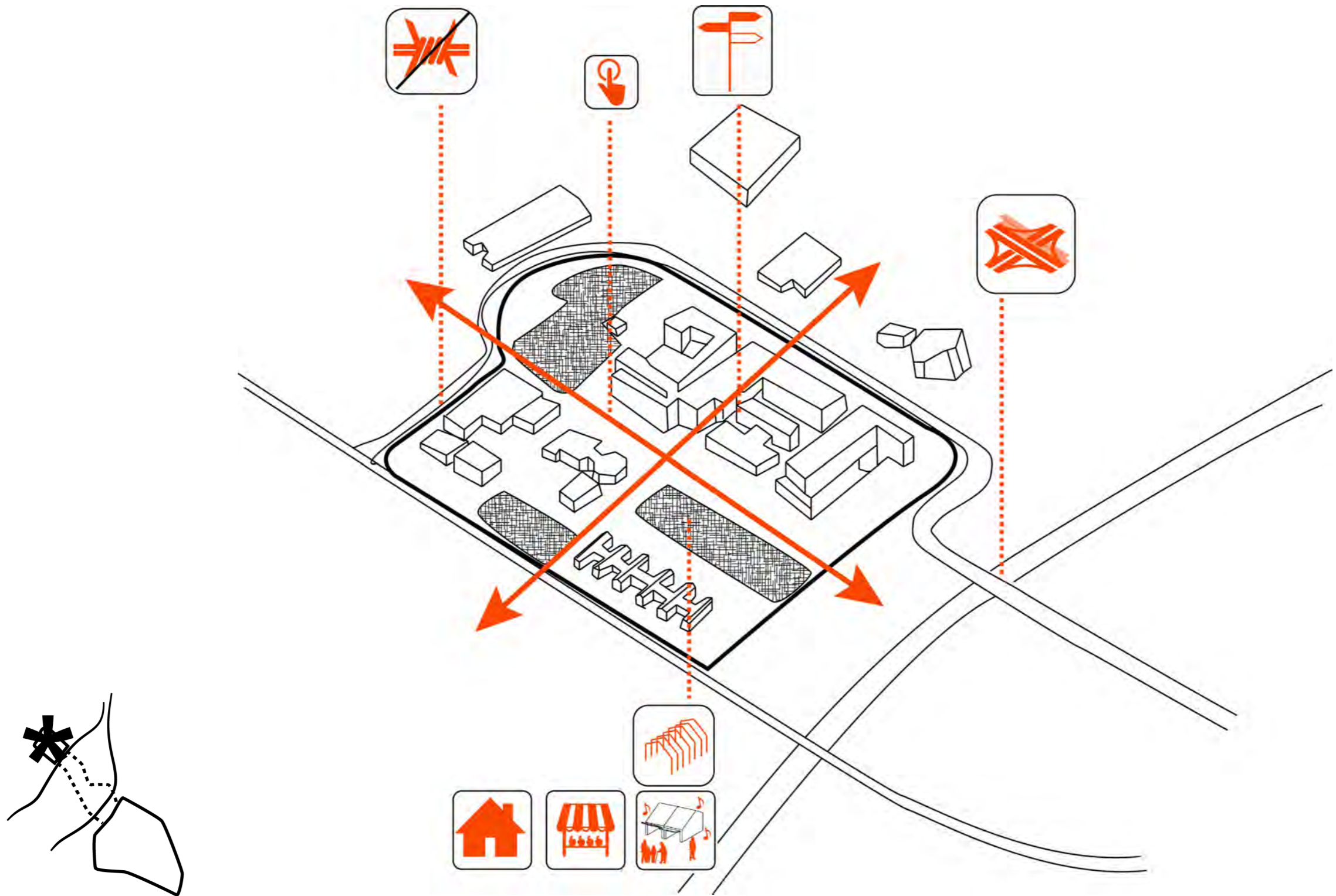
SITE 3 \*

SITE 4 \*

SITE 5 \*



# Zoom 1: Parking lot on Campo Cravino





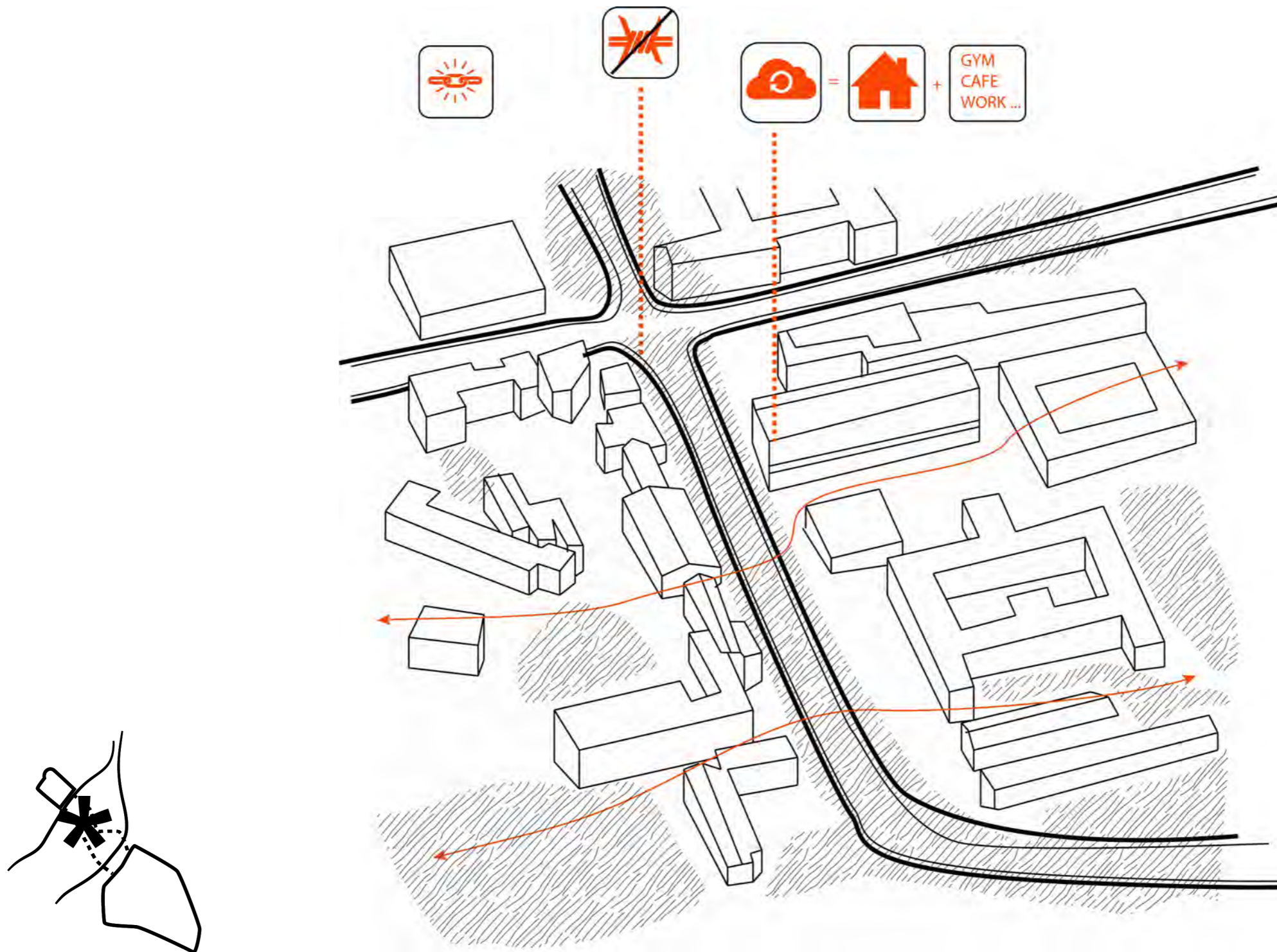








## Zoom 2: Viale Taramelli (next to future medicine campus)







Handwritten graffiti on the stone wall, possibly reading "MAY" or "MAY 19" in red and black ink.

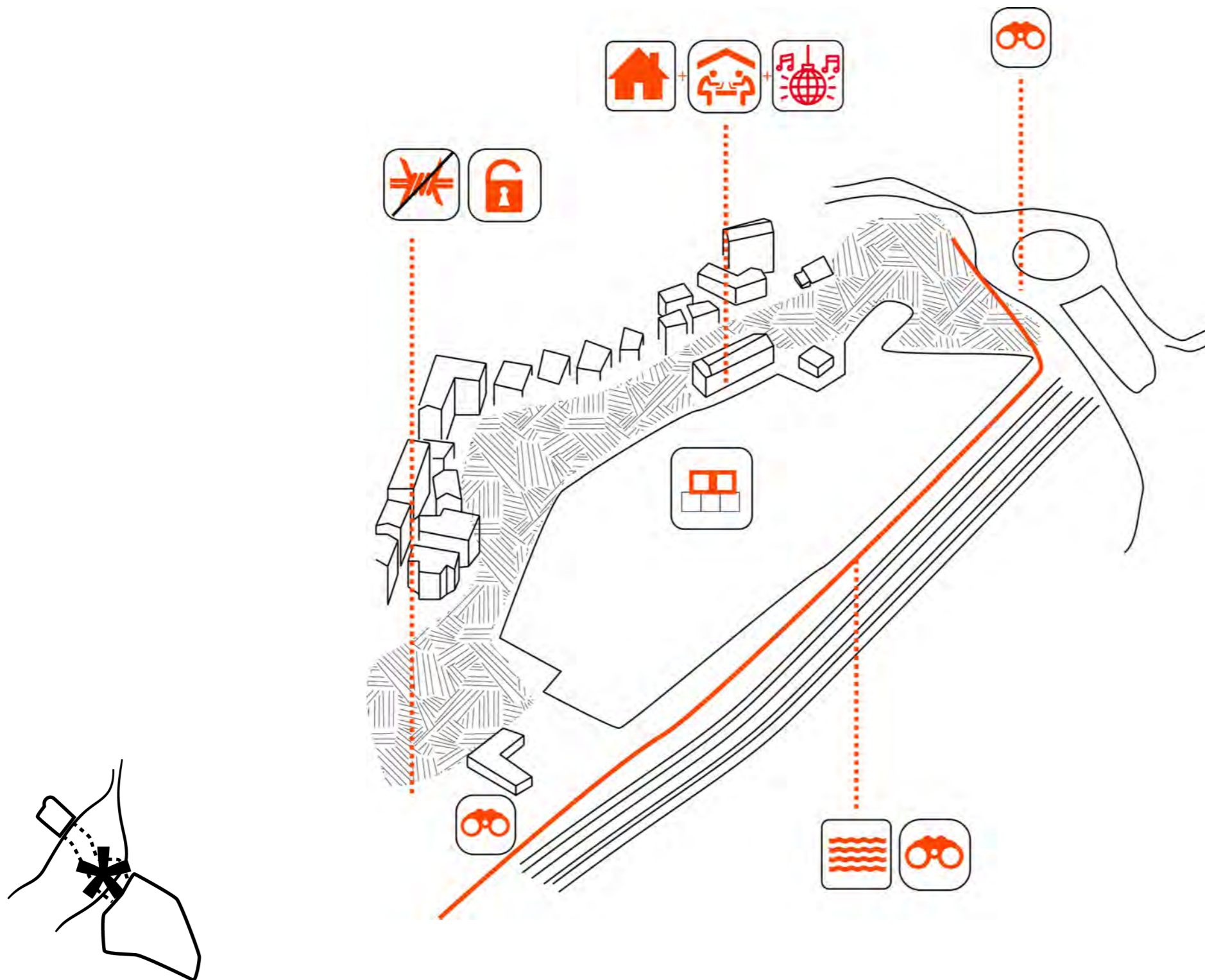








# Zoom 3: Area Ex-Neca (former industrial area)





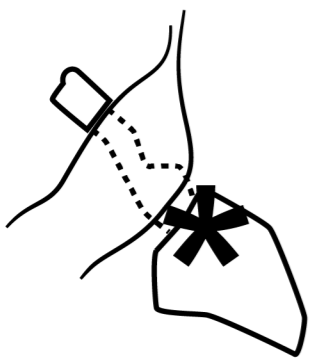
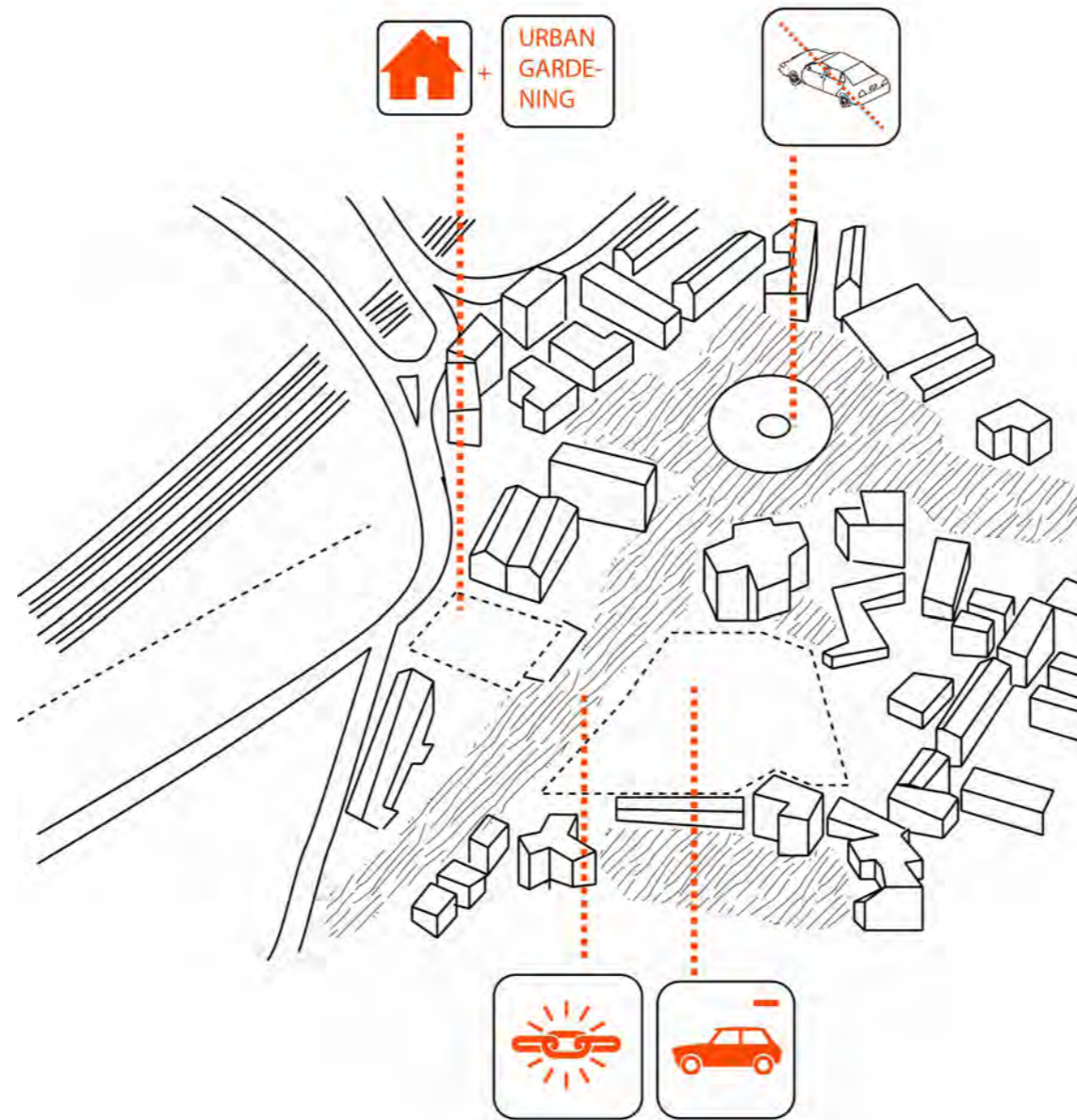








# Zoom 4: Area Viale Nazario Sauro (wasteland in the city center)













# Zoom 5: Area Sud Navigliaccio (green area between city and highway)

