

# NY VÄG!



**NY VÄG** is a **metabolic infrastructure** that works as an **open platform** for people to explore, learn, meet, imagine and experiment life in Mälarporten, that during the construction time will become a mutable experimental district, based on accessibility, inclusion, participation and on the creative potential of people and places.

NY VÄG is an **open and modifiable** system capable of welcoming new flows, ideas, inputs and transforming itself according to the needs of the community.

It is composed by a main spine and its changeable nodes:

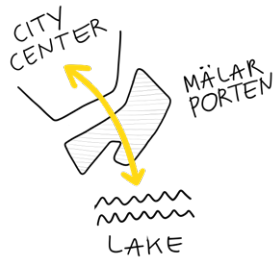
- **the pathway** (flow), that is not a quick-crossing way but a slow exploring track for soft mobility
- the transformable **archetypes** (places) that allow to experiment different way of living in relation to people's need together with the specificity of the sites.

NY VÄG works at **three different scales**:

**L** - at the urban scale, it creates the **missing links between the city center and the lake**, overcoming the present condition of isolation of Mälarporten. In this way Mälarporten reclaim its role as a fundamental part of the city, being the city-gate to the lake Mälaren.

**M** - at the district scale, it provides the cycle and pedestrian **infrastructure** that allows to move around Mälarporten and discover its hidden places.

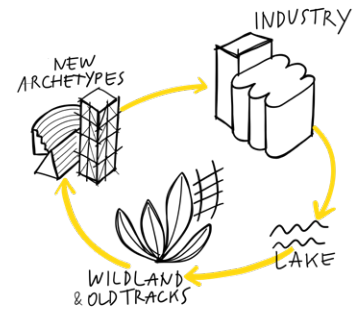
**L LINK BETWEEN THE CITY & THE LAKE**



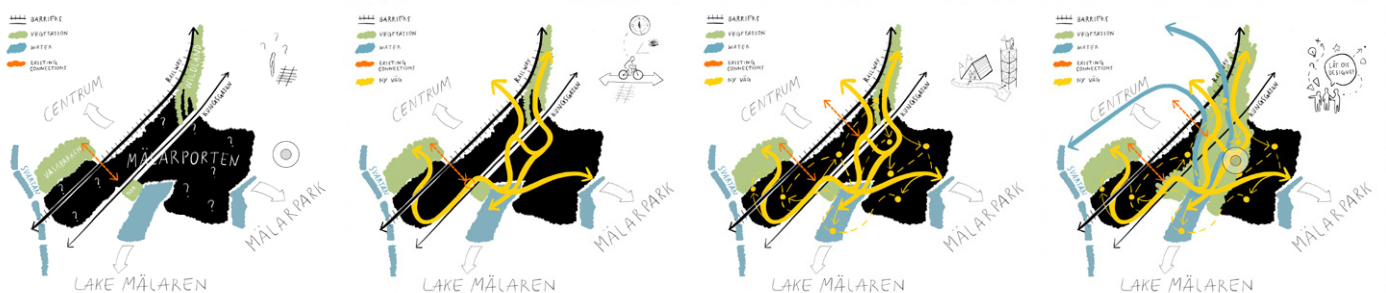
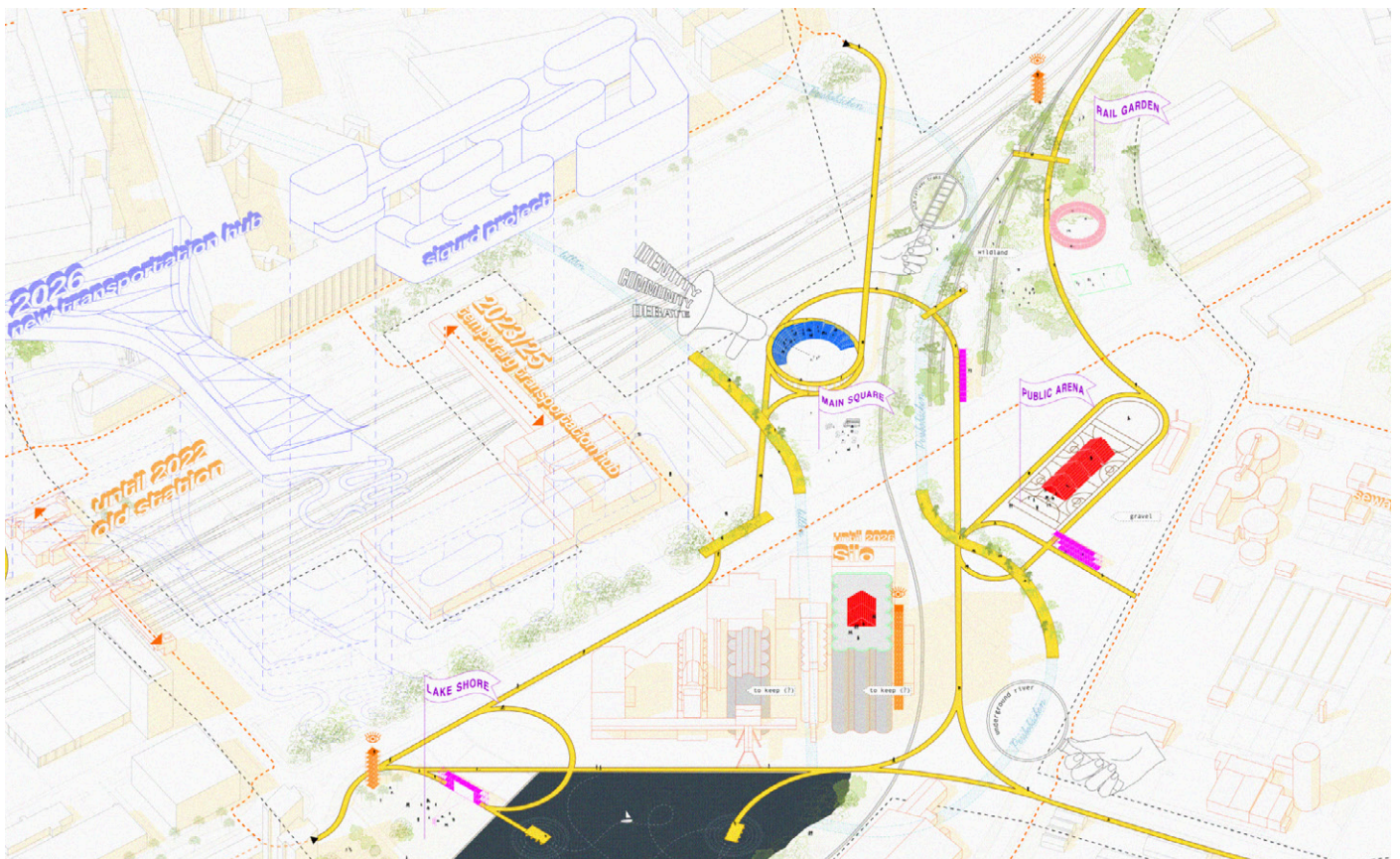
**M DISTRICT INFRASTRUCTURE**



**S IDENTITY & PUBLIC SPACE SYSTEM**



**S** - at the public space scale, it connects the fragmented and neglected places of Mälarporten, giving a new reading of its characters and identity and showing possible way to inhabit its places. Ny Väg is a **re-reading path of the existing space**, that puts the Mälarporten's fragments of identity (forgotten rivers, industrial remains, railway tracks, lake, spontaneous wildland...) into a system together with the new archetypes, providing different points of view that triggers **new vision and possibilities**.



NY VÄG! move around (Västerås)



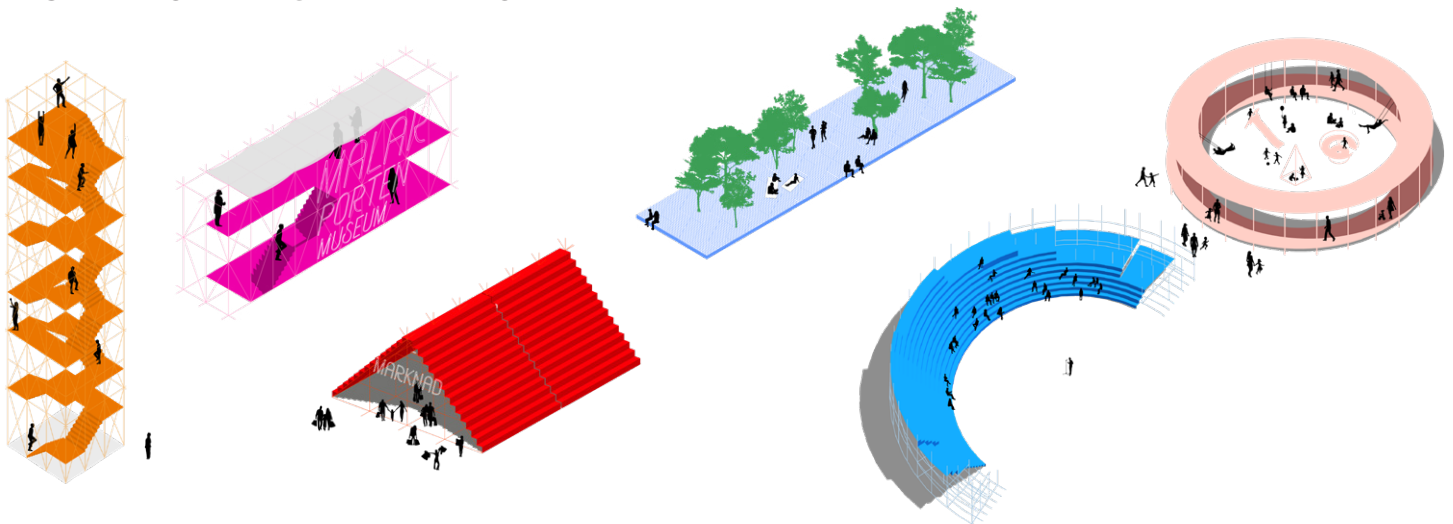
## STRATEGY - from now to the remote future

Where is Mälarporten? Today the area, that consists of **inaccessible land**, offices and industries, is lacking connections with the city center and it is fragmented by two main barriers, the railway line and Kungsgatan.

## OPEN AND CONNECT

The project starts with the fundamental action that allows people to inhabit an inaccessible space: building **the new infrastructure that explores** the closed and unknown spaces of Malarporten and **links** the district with the city and the lake.

## ARCHETYPES - LIVING EXPERIMENTS



The infrastructure is an **open system** that triggers **temporary architecture and public spaces** that aim at transforming marginalized spaces into places of exchange, co-learning and imagination.

The archetypes together with the sites qualities and characteristics, build the **"places of possibilities"**, where people can meet, form new stories and memories and build important community values.

The archetypes are **movable, rebuildable** and can be configured in different forms according to many conceivable activities.

## IMAGINE THE FUTURE

The project, starting from the core spine (the yellow path), legitimizes more free movements of **appropriation and modification** of this urban fragment.

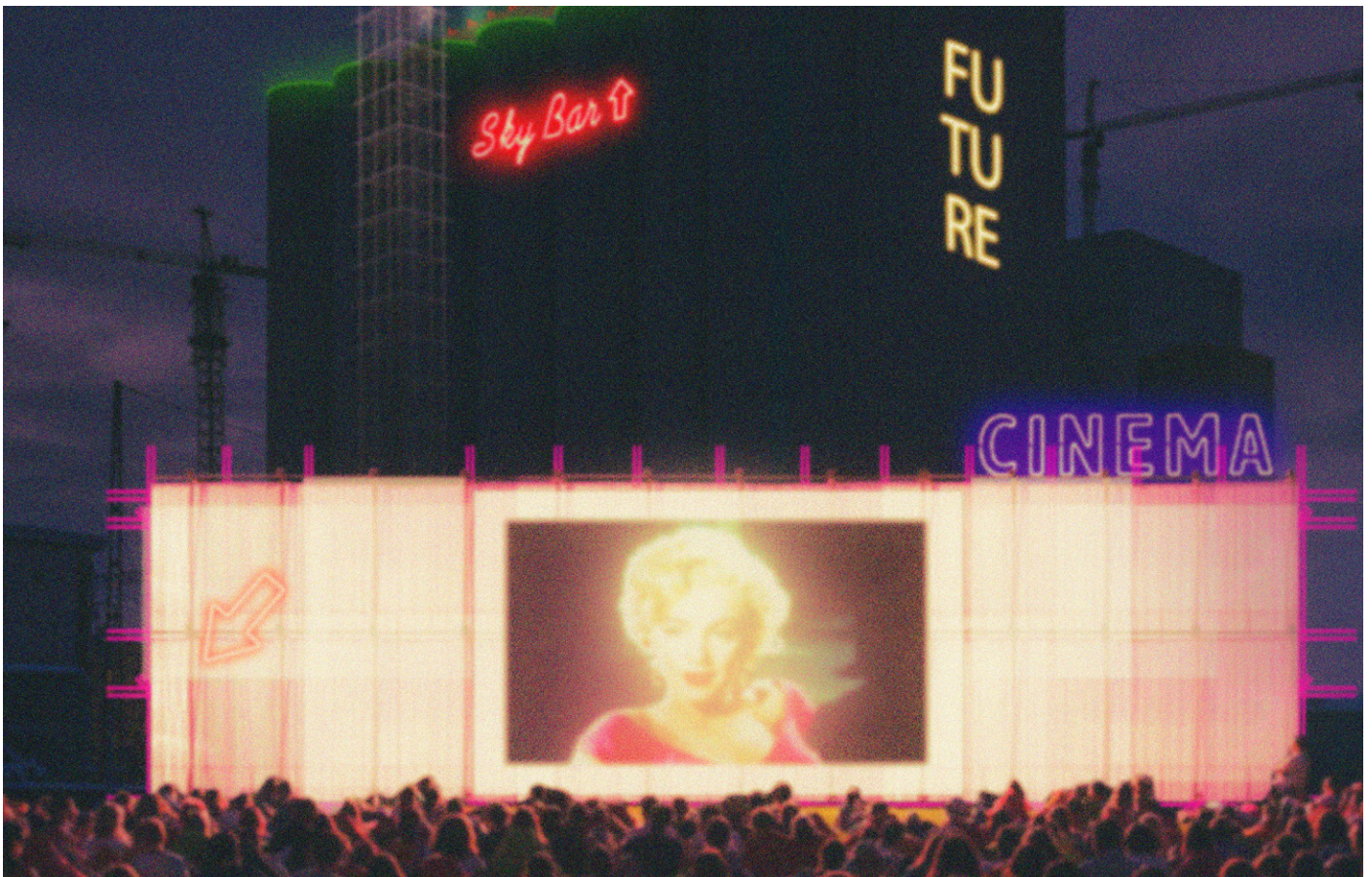
From the infrastructure new spontaneous paths will take off, determined by people interactions, **new uses and proposals**, guaranteeing freedom of transformation and incrementation of the project not only as a possibility but as a necessity for social **equality and inclusivity**.

A remote vision of the future can be imagined: NY VÄG become the backbone of a green and blu

infrastructure that works at the urban scale as a **metabolic system** that sews together different urban fragments with the lake.

The two forgotten underground **rivers**, Lillån and Persbobäcken, reappear and regain their natural space, functioning also as a propagation infrastructure for vegetation and animal species.

The **wild-land** that has spontaneously grown near the abandoned rails, continues its re-naturalization process and it spreads to the shores of the lake. This dynamic ecosystem, made of vegetation, water and people flow, reconnect urban and territorial fragments, promote movements in between, and create a city that is resilient to climate change.



## OUTCOMES

The aim of the project is that of outlining a possible new way for people to inhabit what now is perceived as an hostile land, by **giving them the platform and the tools** to read the existing (sometimes hidden) qualities, to re-imagine and to experience together how Mälarporten can become an **inclusive** and sustainable part of their city and how they can actively contribute to build and transform it. The project of course has a strong temporary connotation, which allows a freedom

of experimentation and an ability to metabolize new changes and transformations, but at the same time it functions as a space-time dimension where permanent **community values and identity** are incrementally built.

NY VÄG, as a temporary physical experiment, expects a permanent outline that is people interactions and relationships between them and between their community and the city space. NY VÄG is the time and space where people build the **memory of the place**, the wishes for the future and the values from which to start.