

Topography for life

THE OVERVIEW

At the heart of our general strategy is the goal to revitalize and redefine Larvik, blending the old with the new, the urban with the natural, the functional with the aesthetic. We seek to consolidate and enhance the existing urban fabric, promote heritage walks, create green structures, reduce car usage, and foster active participation of the local community. Our approach is not just about solving problems; it's about seizing opportunities to create a vibrant, sustainable, and inclusive town that respects its past while boldly embracing the future.

EQUIPMENT

- Library
- WC
- Changing rooms
- View point
- Sea terraces
- Sea pool
- Coffe
- Community garden
- Rest zones
- Outside activities

LINKING LAND & SEA

Seamlessly merging city, forest, and waterfront with strategic connections, we instill harmony between urban and natural realms. Walk along the seashore, traverse to the city centre, or meander through green areas, redefining Larvik's mobility.

UNIFYING URBAN FABRIC

The design links together facilities and public spaces, creating an accessible and connected urban landscape. By consolidating the city with the seashore, we celebrate Larvik's urban and maritime identities, boldly reimagining its future.

DENSITY & DIVERSITY

By infusing a vibrant mix of uses, we intensify Larvik's public spaces and harbour area. This spatial maximization brings life to the town, fostering a bustling hub of interaction and activity.



CONSOLIDATE! Link between the consolidated city and the harbour. Improving and strengthening existing structures and resources. Merging functions and services to create more efficient and effective systems. Carrying public services and infrastructure to better serve the community.

WALK THE HERITAGE! Encourage residents and visitors to explore and appreciate the town's historical area. Through heritage routes that pass through key historical sites, thus providing a direct connection to the town's past.

GREEN STRUCTURES Integration of parks, green roofs, green walls, and green facades. Encouraging green structures and resources. Merging functions and services to create more efficient and effective systems. Carrying public services and infrastructure to better serve the community.

CARS OUT! Reduce reliance on cars and promoting more sustainable modes of transportation. Improving public transportation, creating pedestrian and cyclist-friendly infrastructures, implementing policies to discourage car use, and rebalancing the town's traffic.

PARTICIPATE! Emphasize the involvement of local residents in the planning and decision-making process. It fosters a sense of community ownership and ensures that the urban design reflects the needs and preferences of the local community.

SUSTAINABILITY

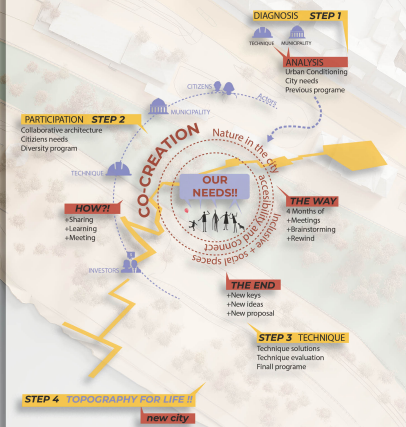
- Solar Energy
 - Rain water collection
 - Ecological garden
 - Charge points
 - KMO Materials
- MOBILITY**
- Bike lane
 - Running lane
 - Promenade
 - Bike parkings
 - Bus stops
 - Charge points
 - Dock
 - Parking areas



IMPROVE THE STREETS FOR THE PEOPLE



COLLABORATIVE DESIGN



THE 60-40 PRINCIPLE

64% of the scope of action green areas or filtering pavements that optimize rainwater and humanize the landscape. The benefits that can be achieved by SUDS will be influenced by the site, but they fit broadly into four categories: water quantity, water quality, amenity and biodiversity.

Topography for life

THE NEIGHBORHOOD

Our neighbourhood strategies are the lifeblood of our vision for Larvik. We envision a neighbourhood that is walkable, full of open spaces, and buzzing with activity. A neighbourhood where the connections are not just physical, but also social and environmental, and where each element contributes to a vibrant, sustainable, and cohesive urban fabric. These strategies, from enhancing connectivity to creating green links, are designed to breathe life into the neighbourhood and make it a place where people love to live, work, and play.

COMMUNITY & CITY

- Playground
- Elderly equipment
- Picnic Area
- Sports area
- Outdoor activities
- Rest zone
- Cafes and terraces
- Outdoor events
- Chess and checkers

COMMUNITY & ECOSYSTEM

- Urban gardens
- Wetland
- Rainwater collection

COMMUNITY & HARBOUR

- Natural pool
- Kayaking
- Sport fishing
- Tourist boat
- Jet ski
- Local market
- Outdoor cinema
- Food truck
- Exhibitions

HOUSING

- +housing rehabilitation
- +social housing
- +low housing regulation
- +new types of housing

SUSTAINABILITY

- +Energy communities
- +Naturalized roads
- +Naturalized private spaces
- +Sustainable drainage
- +Urban gardens
- +Climate shelters

SOCIAL RIGHTS

- +Reconciliation spaces
- +Improve sanitary equipment
- +Social intervention programme
- +Elderly care

ECONOMY

- +Coworking spaces
- +Connected areas
- +Local markets
- +Training equipment

PUBLIC SPACE

- +Improve public spaces
- +Accessibility improvements
- +New bike lanes
- +Electric transport rental points
- +New parking Areas

CULTURE

- +Heritage activation
- +New Natural's view points
- +Cultural programming
- +Open courtyards and open squares



CONNECT & WALK! Enhance the walkability of the neighbourhood by creating safe, convenient, and pleasant pedestrian routes. Improving sidewalks, crosswalks, and other pedestrian infrastructure, and creating connections between different areas of the neighbourhood.

SPACES FOR ALL! Creation and enhancement of open spaces, such as parks, plazas, and courtyards. These spaces provide opportunities for outdoor activities, social interaction, and relaxation, and contribute to the overall quality of life in the neighbourhood.

REACTIVATE! Revitalizing underused or neglected spaces in the neighbourhood involves repurposing these spaces for new uses, such as community gardens, refurbishing unused buildings into art studios or coworking spaces, or turning deserted alleyways into vibrant pedestrian paths.

LIVE THE NATURE! Creating a network of green spaces that connect different areas of the neighbourhood. These green connections enhance the neighbourhood's sustainability, provide pathways for walking and cycling, and create a pleasant and attractive environment.

MOVE! Improvement of transportation and connectivity within the neighbourhood involves enhancing public transit services, creating safe and efficient routes for cycling and walking, and ensuring easy and convenient access to key destinations within the neighbourhood.

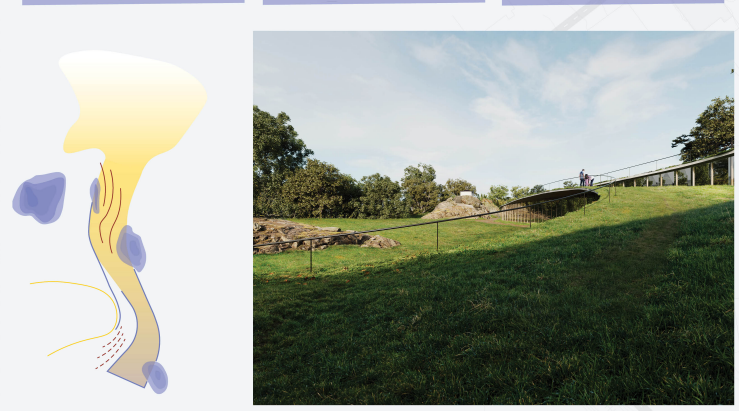


Topography for life

THE LIBRARY AS A DOOR

The Heart of Larvik: An Innovative, Community-Driven Library

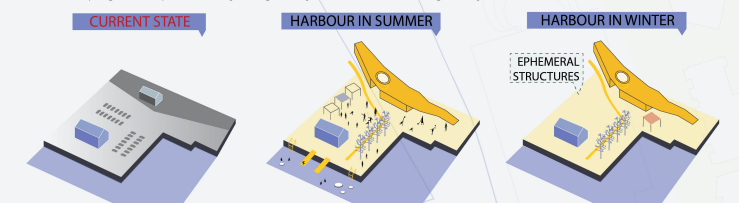
Nestled within the green heart of the town, our proposed library respects Larvik's topography and geological heritage, paying homage to the famed Larvikite stone. Skillfully designed to minimize environmental impact, the structure gently harmonizes with the landscape rather than imposing upon it. Yet, this library is more than just a building; it's an open, flexible space that will be moulded by the very people it serves. Resulting from a participatory process, it is shaped by the voices and visions of Larvik's residents, embodying their collective aspirations. Connected seamlessly with the park, the library extends the public space, offering breathtaking views and a tranquil haven amidst nature. It's more than a repository of knowledge; it's a place of community, connection, and contemplation—an architectural testament to Larvik's resilience, vibrancy, and enduring charm.



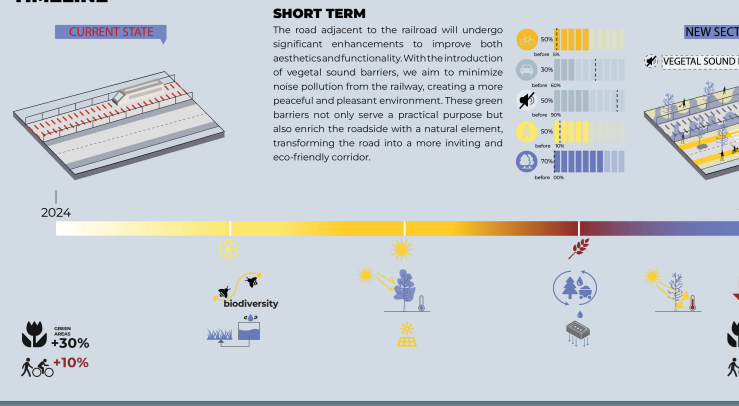
THE HARBOUR GATE HUB

A Sustainable Gateway to Larvik's Vibrant Sea Life

Positioned at the harbour's entrance, the Harbour Gate Hub serves as a pivotal link, seamlessly connecting the park with the bustling energy of the harbour. This solution-oriented edifice addresses the challenges outlined, forging a vibrant and accessible connection between the town's key areas. Crafted from sustainably sourced timber, the building leaves a negative carbon footprint, making a bold statement about Larvik's commitment to environmental responsibility. With its flexible design, the Hub is a dynamic container that will adapt to the evolving needs identified through participatory processes. More than a building, the Harbour Gate Hub is a symbol of change and adaptability, of balance between humans and nature, and of the town's progressive spirit. It's not just a gateway to the harbour, but a gateway to a sustainable, inclusive future for Larvik.



TIMELINE



INTEGRATE LOCAL HERITAGE. The new interventions and the existing heritage are intertwined in a circular corridor that goes from Larvik's port with the port. The corridor includes Larvik's heritage, Fovres gate, Bekkeveien and Bredøsch's gate. The new library, Bekkeveien Park and the new connection are integral parts of the "heritage corridor".

MAXIMIZE WALKABILITY AND BIKE. Walking and biking will be prioritized, while car access will be available for residents in the developed area.

THE LIBRARY. A building that fulfil the needs for all groups, people and generations in Larvik. A library for the future, which is inviting and built on Larvik's identity and history.

GREEN FRONT SANDERØYSPROSEN. Future urban development to be developed where the current railway infrastructure is, focusing on sustainability and green spaces.

SEASONAL TRANSFORMATION SPACES. Create spaces that can be easily transformed from one season to another. For example, a public square can be a market in summer, an ice skating rink in winter, and a concert space in spring and autumn.

LONG TERM. In the long-term vision, the railroad, once a symbol of industrial progress, will metamorphose into a green longitudinal park. This conversion will replace the hard lines of steel and gravel with lush vegetation, walking paths, and serene spaces for relaxation and recreation. An embodiment of adaptive reuse, this transformation will not only enhance the town's green infrastructure but also provide a peaceful, nature-infused corridor that stitches together key parts of the town. This green park will serve as a testament to Larvik's commitment to sustainable urban development and community well-being.

SHORT TERM. The road adjacent to the railroad will undergo significant enhancements to improve both aesthetics and functionality. With the introduction of vegetative sound barriers, we aim to minimize noise pollution from the railway, creating a more peaceful and pleasant environment. These green barriers not only serve a practical purpose but also enrich the roadside with a natural element, transforming the road into a more inviting and eco-friendly corridor.

NEW SECTION ROAD. A new section road will be built, connecting the harbour area to the city center, improving traffic flow and accessibility.

RAIL TRAIN GREEN PARK. A green park will be created along the railroad, providing a recreational space for residents and a natural barrier between the harbor and the city.

VEGETAL SOUND BARRIER. A vegetative sound barrier will be built along the railroad, reducing noise pollution and improving the quality of life for residents.

NEW SECTION ROAD. A new section road will be built, connecting the harbour area to the city center, improving traffic flow and accessibility.

RAIL TRAIN GREEN PARK. A green park will be created along the railroad, providing a recreational space for residents and a natural barrier between the harbor and the city.

VEGETAL SOUND BARRIER. A vegetative sound barrier will be built along the railroad, reducing noise pollution and improving the quality of life for residents.

NEW SECTION ROAD. A new section road will be built, connecting the harbour area to the city center, improving traffic flow and accessibility.

RAIL TRAIN GREEN PARK. A green park will be created along the railroad, providing a recreational space for residents and a natural barrier between the harbor and the city.

VEGETAL SOUND BARRIER. A vegetative sound barrier will be built along the railroad, reducing noise pollution and improving the quality of life for residents.

