

SOOTHING INTERVENTIONS

WHAT LEVEL OF INTERVENTION IS HEALTHY FOR A TOWN ?



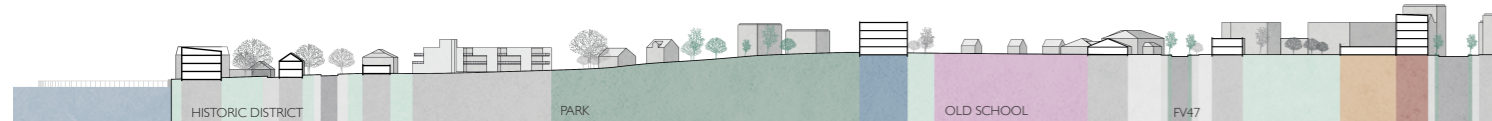
PARK PAVILION
highlight site specialties



REDESIGN OF THE MAIN STREET
redesign streets with more greenery and safety

REINFORCE THE CITYSCAPE

L-SCALE RULES FOR A MASTERPLAN



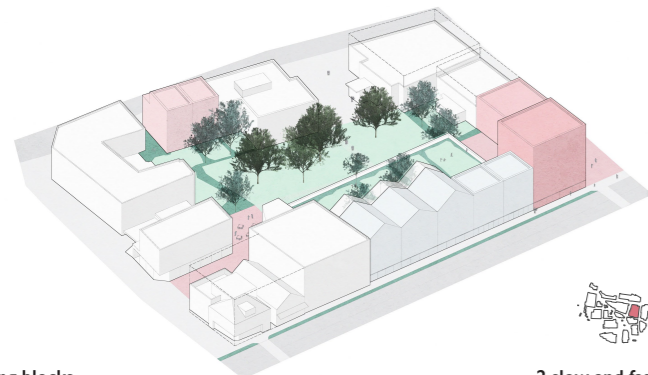
SECTION M 1:1000

RESPECT THE HERITAGE

Renewment of the city center must ensure on the one hand not to destroy beloved urban heritage but on the other hand needs to demolish buildings which are either overformed over the years or unchangeable urban barriers. We try to keep as many existing buildings as possible.

URBAN METHODS

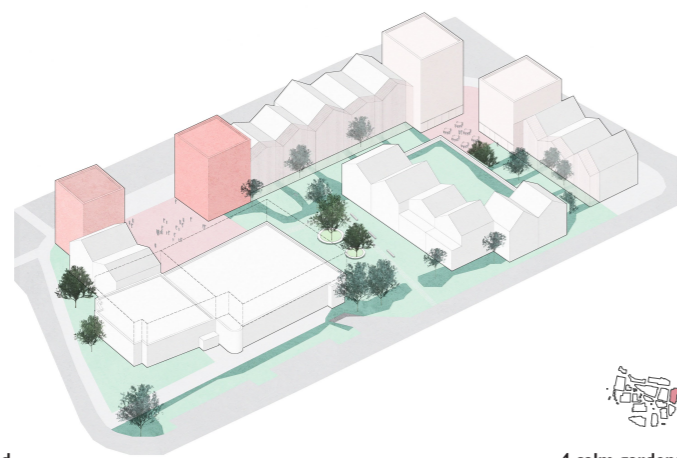
M-SCALE RULES FOR A BLOCK IN THE CITY CENTER



1 closing blocks
In urban area strategy is to close the blocks without interfering with structures worth preserving.

2 slow and fast mobility routes
The city will remain accessible for both slow and fast mobility, but they will be more separate.

3 wind protected squares
By the arrangement of the houses, the squares are wind protected for better outdoor stay.



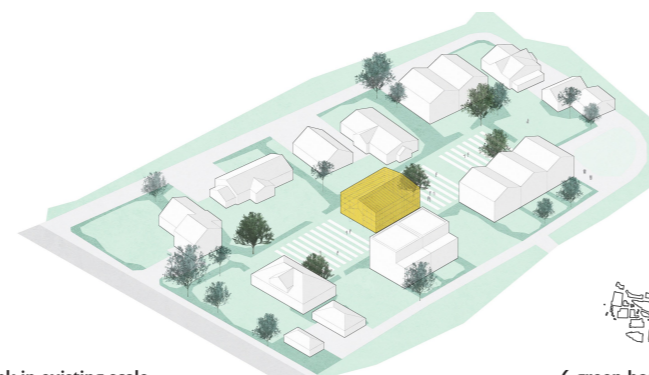
4 calm gardens
The inner of the block separates in different outdoor types: private gardening, community gardens and greenery on above level.



SITE PLAN M 1:1500

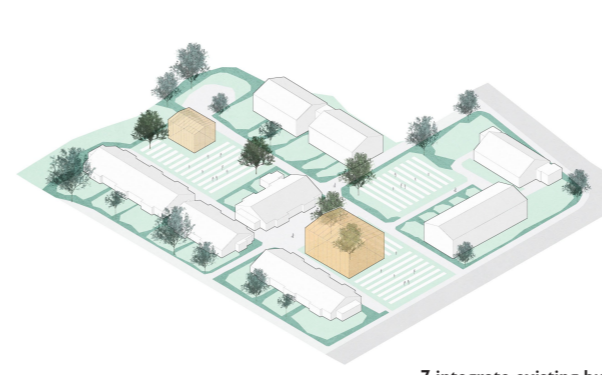
VILLAGE VIBE METHODS

M-SCALE RULES FOR THE LESS DENSE AREAS



5 think in existing scale
Mostly west from the park, less dense areas should remain in their village vibe.

6 green houses
Neighborhoods are encouraged to invest in their togetherness, mostly through a community garden with big green houses.



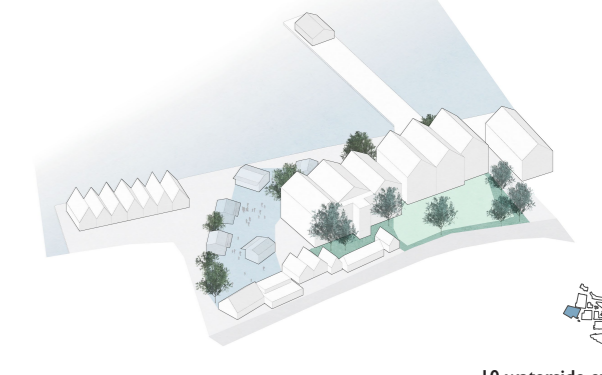
WATERSIDE METHODS

M-SCALE RULES FOR HISTORICAL DISTRICT



8 keep city scale
One landmark of Åkrehamn is the foundation spot at the waterside. With new buildings separate the residential areas from public.

9 enjoy waterside
Newly connected to the park, the waterside is redesigned as destination of walks through Åkrehamn.



10 waterside events
Åkrehamn already has two squares at the waterside that need a redesign of surfaces and a concept for events on the waterside.

A COMMUNITY OF HUMAN AND NON HUMAN

BREAK UP THE ASPHALT AND BRING BACK NON HUMAN BEINGS



GREEN EVERYWHERE
human and non human beings living together



LIVING IN A NEIGHBOURHOOD
feeling connectness

The three role models URBAN BLOCK - VILLAGE VIBE - WATER SIDE refer to existing structures and differ in density, housing types and outdoor spaces. To achieve togetherness of the residents, superior meeting places are created. These also care about program for visitors and tourists.



WHERE TO MEET
meeting places regarding to the block types

For neighborhood connectness, community gardens in the blocks enhance local activities. All over the town, flow and living for animals must be assured. New planted trees and bushes helps them to find a safe home.



PUBLIC SQUARE AT THE WATERSIDE
the park connects to the waterside with a waterpath and an cold outdoor swimmingpool

ARCHITECTURAL APPROACH

S-SCALE RULES FOR AN ARCHITECTURAL DESIGN WHICH FITS



STREET FACADES FV47 WEST M 1:500



STREET FACADES FV47 EAST M 1:500

DESIGN FOR THE FUTURE

The design proposed different urban gestures: Usually, the new buildings refer to the existing housing types with a small footprint and a gable roof. On important urban features like superior squares there are high flat roof houses which bring orientation and frame the surrounding.