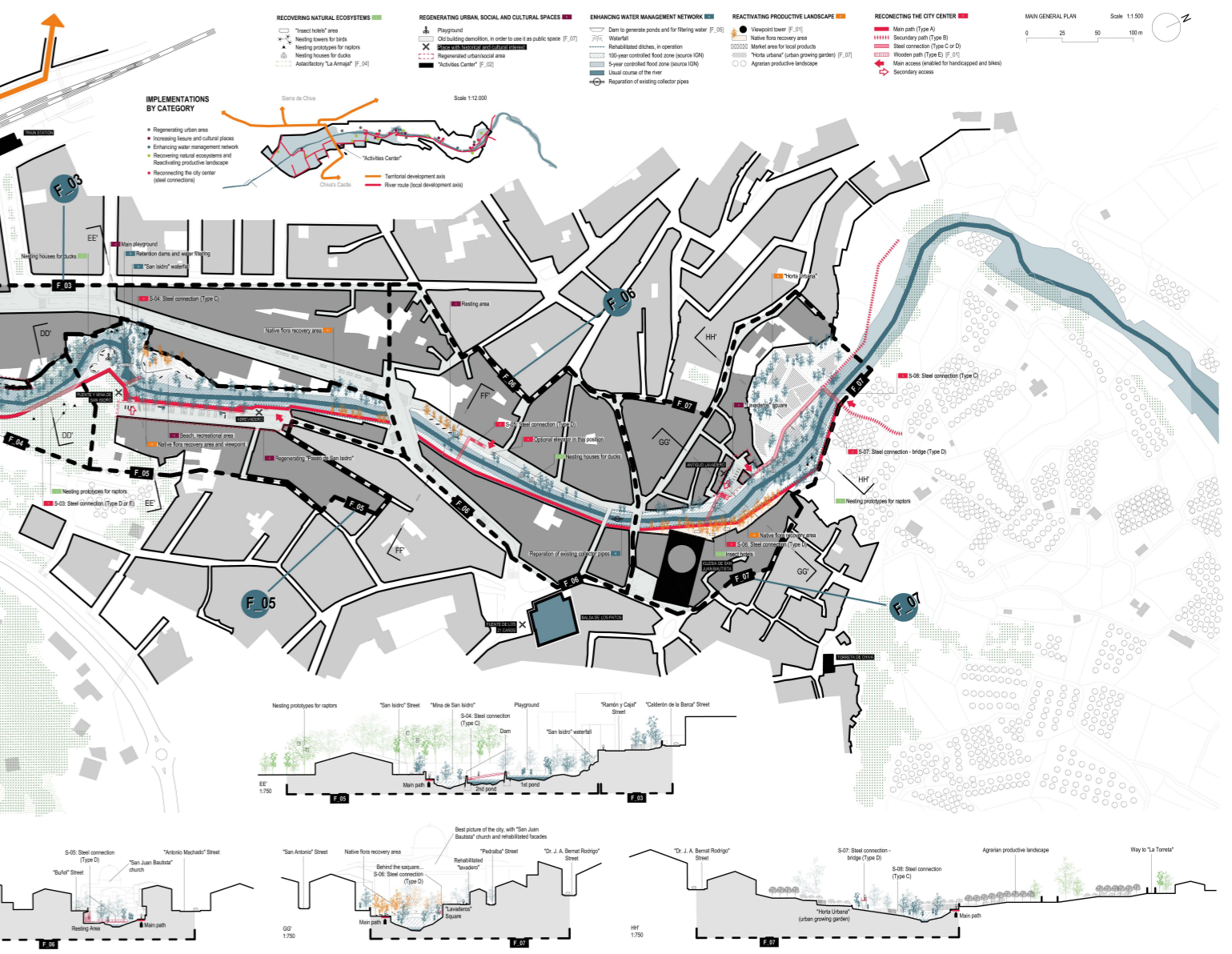
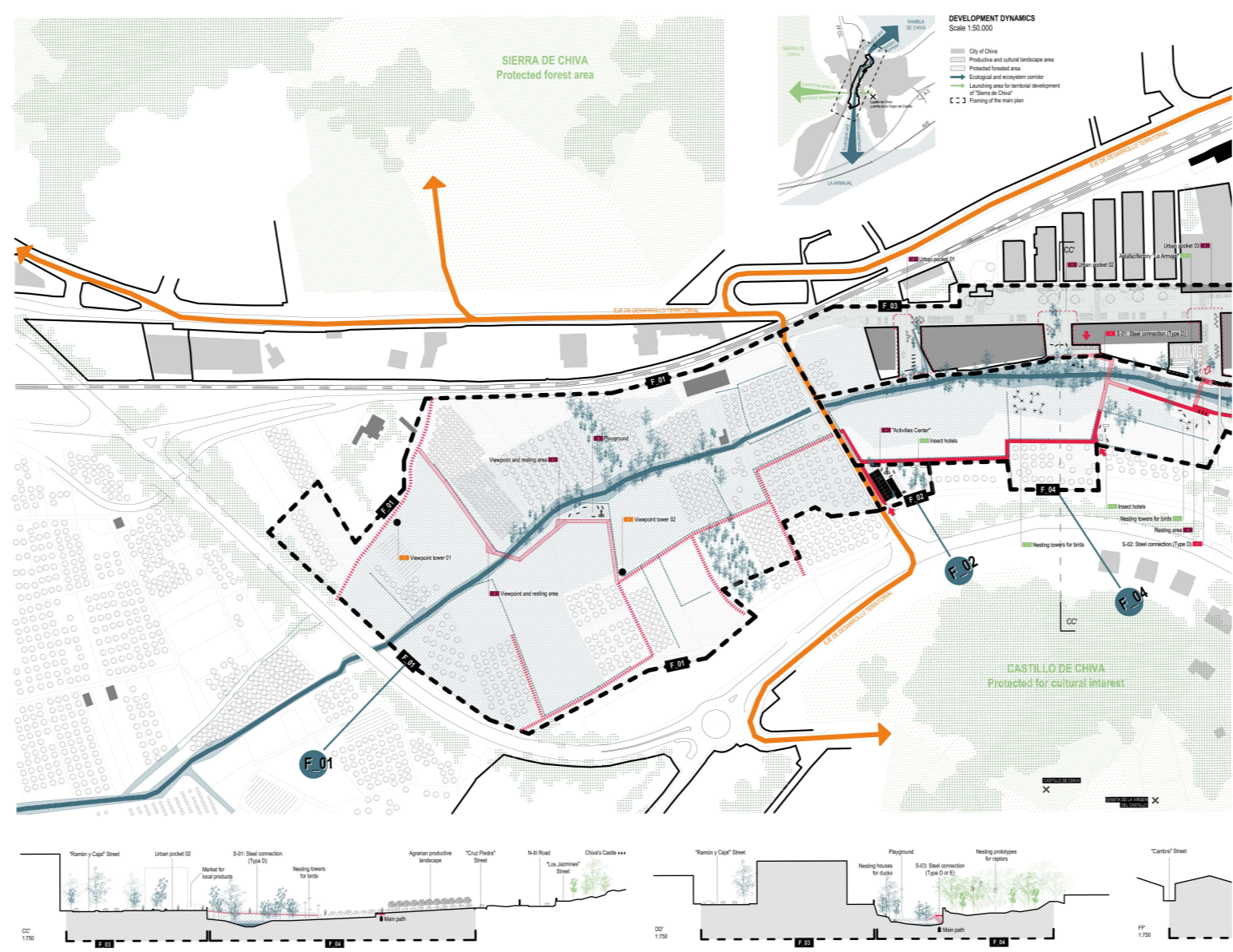
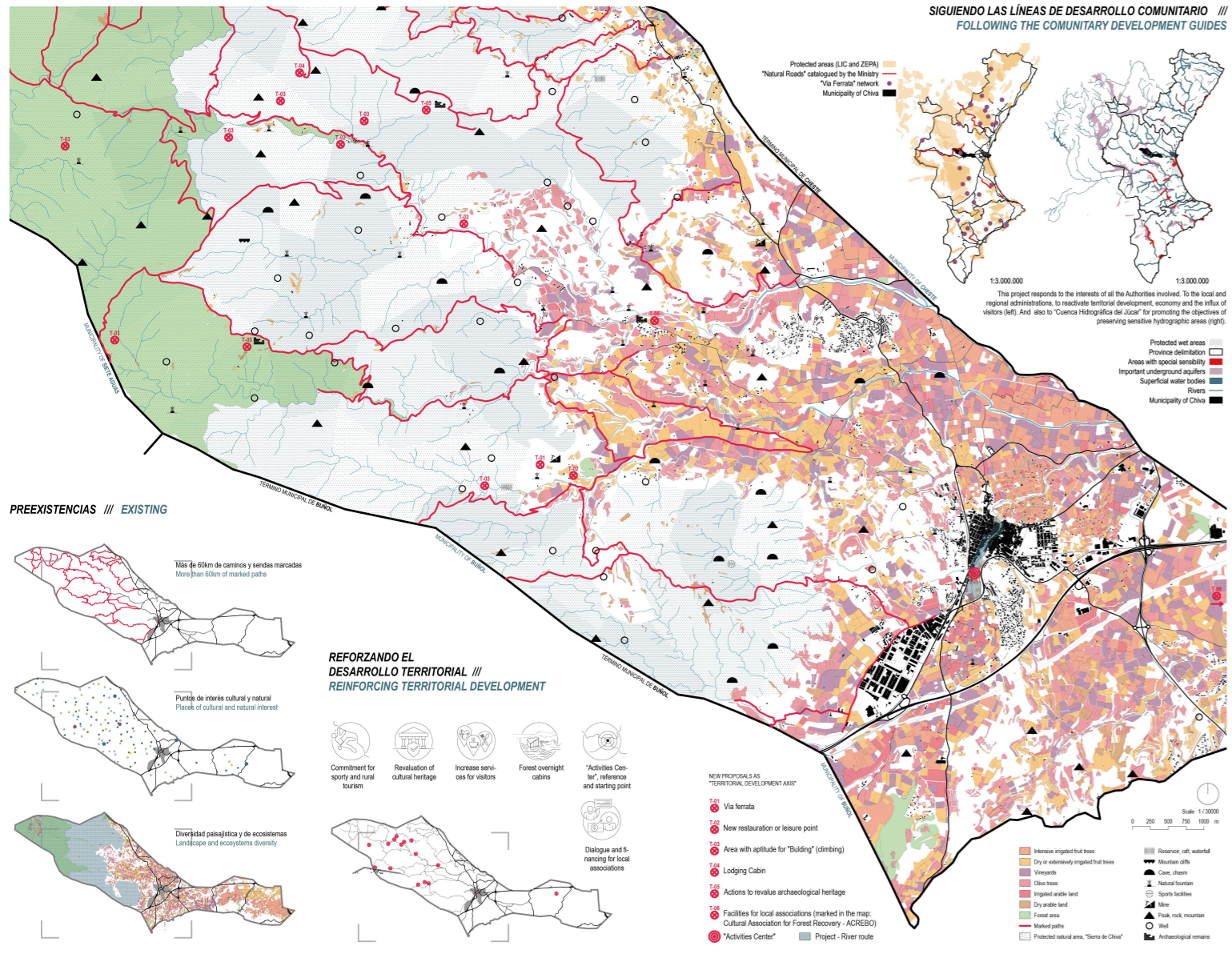


EL SUSURRO DEL AGUA WHISPERS OF WATER

EL SUSURRO DEL AGUA WHISPERS OF WATER

EL SUSURRO DEL AGUA WHISPERS OF WATER



PLAN DE DESARROLLO TERRITORIAL: NUEVAS LINEAS DE ACCIÓN
Territorial Development Plan: New Lines of Action

The project is an opportunity to promote the territorial development of Chiva. The main strategy is focused on attracting rural and non-stationary tourism, enhancing the conservation of market routes and the consumption of local products.

- [L1] Installation of a VIA FERROVIARIA (RAIL) and the "PÉREZ GALBA" SQUARES connecting the urban center with the surrounding landscape of great natural importance.
- [L2] Increase tourism to offer NEW RESTAURATION AND LEISURE POINTS (cafés) along the routes with great interest.
- [L3] Make a NETWORK OF "BOULDER CLIMBING SPOTS" since the territory offers numerous walls and rock blocks which are ideal for practicing this sport.
- [L4] Installation of LODGING CABINS for tourists.

FOCUSING ON SPORT AND NON-STATIONARY TOURISM

TRAMO / FASE n° 01: AGROPARQUE, PAISAJE PRODUCTIVO
SECTION / PHASE n° 01: AGROPARK, PRODUCTIVE LANDSCAPE

The user enters the project area through the SECTION / PHASE n° 01 from the south. An area of olive fields occupies the terrain known as "La Armajal". It is currently a landscape mainly with macadamian fruit trees, both irrigated and dry crops, and which generate a rich agricultural landscape very typical in the Valencian countryside.

WOODEN PATH
Viewpoint and resting area

TRAMO / FASE n° 02: CENTRO DE ACTIVIDADES
SECTION / PHASE n° 02: ACTIVITIES CENTER

The construction of an "Activities Center" is proposed, which becomes the point of interconnection between the "fluvial" axis of the river and the "Territorial Development Axis". It is a place of reference where the main market routes start towards the "Sierra", the "Castillo de Chiva" and the "Núcleo de Chiva".

WOODEN PATH
Viewpoint and resting area

TRAMO / FASE n° 03: PLAZAS URBANAS PARA CREAR NUEVAS CONEXIONES
SECTION / PHASE n° 03: URBAN POCKETS FOR NEW CONNECTIONS

"Ramón y Cajal" Street is the entry point to the City of Chiva from the south, and one of the main accesses to the train station. This area has been identified as a strategic urban pocket through the implementation of 3 "urban pockets", which provide this artery with more areas dedicated to pedestrians, green infrastructure, and, of course, some areas with terraced views of the river and Chiva Castle.

URBAN POCKET #1
URBAN POCKET #2
URBAN POCKET #3

TRAMO / FASE n° 04: BARRANCO DE LA ARMAJAL
SECTION / PHASE n° 04: RAVINE OF "LA ARMAJAL"

From the "Activities Center" placed in the SECTION / PHASE n° 02, the main route is considered as a strategic urban pocket that runs through this section before entering the urban area. This intervention has a fundamental role in the recovery of nature facades, so its main interventions are dedicated to:

- Some proposals are the installation of "raptor holes", nesting towers for raptors, houses for raptors and other smaller birds, duck houses, ponds and waterholes for amphibians and fish reproduction, etc.

NESTING HOUSES FOR SMALL BIRDS
NESTING TOWERS FOR RAPTORS
NESTING HOUSES FOR BIRDS

TRAMO / FASE n° 05: BARRANCO DEL PASEO DE SAN ISIDRO
SECTION / PHASE n° 05: RAVINE OF "SAN ISIDRO" PROMENADE

The main path, just after passing the S301-Steel connection, widens to generate a small playground for children in one of the best environments of the project, with the great view of the waterfall and the "San Isidro" ponds.

NEW CONNECTION TO THE TRAIN STATION NEIGHBORHOOD
"LA ARMAJAL" PROMENADE
NEW ACCESS IN "ABREVEDADO"

TRAMO / FASE n° 06: BARRANCO DE LA CALLE BUNOL
SECTION / PHASE n° 06: RAVINE OF "BUNOL" STREET

The path continues the descent route under the "Activo" Bridge and ends reaching the "CIVIL BRIDGE". The interventions in this river section are limited to creating green spaces with the urban character of old town ("Bunol" Street), as well as small reading areas, mainly the preparation of water collectors, which remain open to the public as a space for maintenance.

REPAIRMENT OF WATER COLLECTORS

TRAMO / FASE n° 07: BARRANCO DE BECHINOS Y PLAZA DE LOS LAVADEROS
SECTION / PHASE n° 07: RAVINE OF "BECHINOS" AND "LAVADEROS SQUARE"

After the Old Bridge, the river path reaches its final stretch. The main path continues along the east bank of the river, accompanied by a large garden for the recovery of nature facade.

AREA FOR RIVER RECOVERY

LA SENDA: MATERIALES, ELEMENTOS COMUNES Y DETALLES CONSTRUCTIVOS DE LA RUTA FLUVIAL
THE PATH: MATERIALS, COMMON ELEMENTS AND CONSTRUCTION DETAILS OF A "RIVER ROUTE"

The common element of the whole project is the PATH, which will be built with 4 MAIN MATERIALS we can find all over the site:

- BASIC AND SIMPLE:** simple perforated brick, local volcanic paper wall.
- CHEAP:** corrugated steel, local masonry stone.
- ROUGH FINISH:** compacted earth, stone, concrete.
- STEEL:** steel beams, steel connections, steel plates.

WOODEN PATH TYPE I
WOODEN PATH TYPE II
STEEL CONNECTION TYPE I
STEEL CONNECTION TYPE II

The morphology of this "Center" is inspired by two traditional constructions of the agrarian countryside in the Valencian region: the "Horta de Chiva" and the "Horta de Sagunto".

The inclined roof holding a net of corrugated steel roof, with the greenery climbing to give shade and meteorological shelter, uses the typical Valencian "Horta de Chiva" structure, also made with a vegetable network of cane, hurdle and willow.

WOODEN PATH TYPE I
WOODEN PATH TYPE II
STEEL CONNECTION TYPE I
STEEL CONNECTION TYPE II

One of the most ambitious proposals is the construction of the "Astafactory" led by the "Jaca Hydrographic Confederation" and which will join to network of "fluvial" in charge of regenerating Mediterranean rivers with endemic and endangered species, mainly the "native crayfish" and the "Turkish mabrier".

ASTAFACTORY "LA ARMAJAL"

INSECT HOTELS
Insect hotels are built to provide shelter and food for insects, which are essential for the recovery of the ecosystem. They are built with local materials and are easy to maintain.

NESTING PROTOTYPES FOR RAPTORS
NESTING HOUSES FOR BIRDS