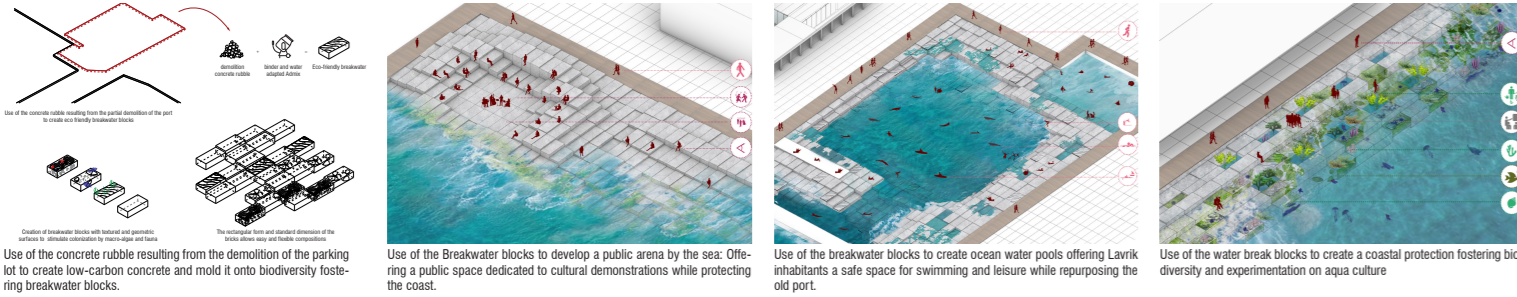




(RE)GENERATE, TRANSFORM LIFESTYLES



A Visionary Cultural Haven: Bridging Larvik's Future

Our project envisions more than a conventional library; it aims to create a forward-looking cultural space that unites the entire city. Acting as a unique connecting element, it links the bustling city center to the serene coastline, rekindling a close bond between these once-isolated areas.

Revitalizing the neighborhood and promoting ecological sustainability guide our design principles. Opting for a renovation and expansion approach, we preserve the library's historical significance and site memory. Situated atop the hill, the multimedia library, adorned with lush vegetation, harmoniously blends into a slightly elevated landscape, offering breathtaking panoramic sea views while gracefully concealing new coastal developments.

Embracing ecological ideals, we reimagine the surrounding coastal landscape, crafting a flood-resistant and ecologically diverse scenic zone. This vibrant space invites people to savor a multitude of activities: from water play to relaxation on platforms formed along the coast, and of course, reading amidst nature's embrace.

The library's architectural concept embodies a multifaceted cultural venue. It's not merely a repository of books but a dynamic cultural territory. A place to savor the soothing sounds of the sea, a tech hub nurturing young entrepreneurs, a shared workspace, an intimate auditorium, and a versatile hall for indoor and outdoor events. Additionally, it hosts exhibitions, performances, and offers an ecological hub for interactive indoor and outdoor landscapes.

The library boasts a dense shelving system accommodating around 150,000 books, tailored to cater to the needs of the city's population, ranging from 60,000 to 80,000. The design thoughtfully incorporates two new buildings and retains two existing ones, forming a seamless four-span spatial layout stretching towards the seaside.

Upon entering, visitors encounter an inviting triangular area, lush with tall trees and shrubs. Serving as an acoustic and visual barrier from nearby railway noise, it offers a clear view of the sea along the envisioned visual axis.

The first building, a new addition, clad in local Larvik stone, houses a tech hub and shared workspace, complemented by a small auditorium for cultural gatherings. Its massive volume and acoustic-focused facade ensure a tranquil reading environment, isolated from bustling city roads.

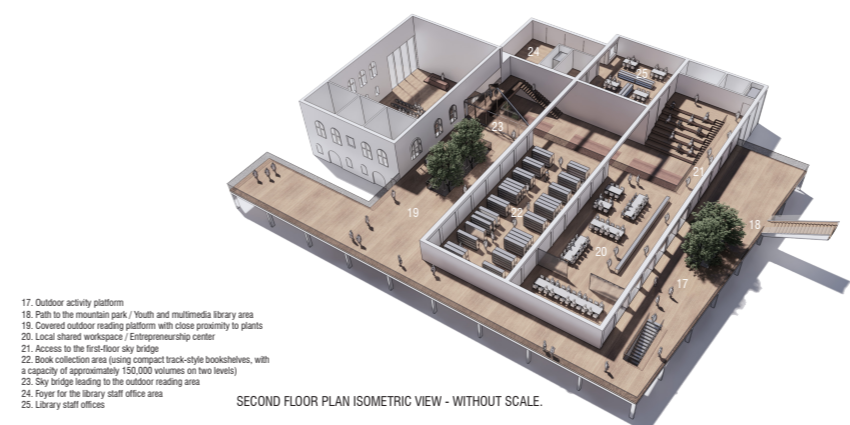
A renovated existing structure forms the second building, preserving its facade while being adapted internally to withstand new load requirements. Hosting a double-level dense shelving system, this space maximizes efficiency and doubles as an acoustic buffer zone.

Connecting the existing buildings, the third construction houses a serene reading area with 150 study seats, surrounded by mature trees. Ample natural light evokes cherished memories of reading beneath the soothing shade of trees.

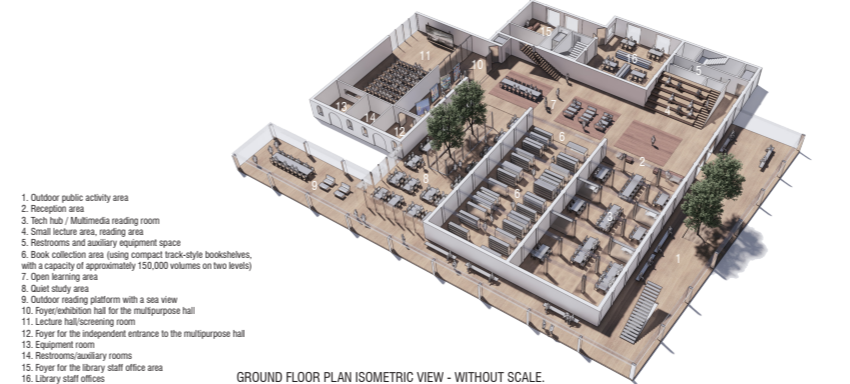
The fourth building ingeniously transforms the existing interior, creating a dynamic double-height multipurpose hall catering to 150 people. Versatile and adaptable, it hosts performances and exhibitions, both indoor and outdoor, facilitated by the flexible facade and independent operating installations.

For staff offices, the existing west wing expands, forging direct links to various functional spaces within the library.

This cultural territory shall emerge as Larvik's poetic landmark, nestled amidst coast and mountains. Seamlessly blending into the city's fabric and coastal landscape, it will become a cherished part of urban life. With captivating charm and enriching cultural offerings, it shall entice visitors to explore Larvik, experiencing its captivating beauty and unique cultural delights.



SECOND FLOOR PLAN ISOMETRIC VIEW - WITHOUT SCALE.



GROUND FLOOR PLAN ISOMETRIC VIEW - WITHOUT SCALE.

- 17. Outdoor activity platform
- 18. Path to the recreation park / Youth and multimedia library area
- 19. Covered outdoor reading platform with close proximity to plants
- 20. Local shared workspace / Entrepreneurship center
- 21. Access to the first floor sky bridge
- 22. Book collection area (using compact track-style bookshelves, with a capacity of approximately 150,000 volumes on two levels)
- 23. Sky bridge leading to the outdoor reading area
- 24. Foyer for the library staff office area
- 25. Library staff offices

- 1. Outdoor public activity area
- 2. Reception area
- 3. Tech Hub / Multimedia reading room
- 4. Small lecture area, reading area
- 5. Restrooms and auxiliary equipment space
- 6. Book collection area (using compact track-style bookshelves, with a capacity of approximately 150,000 volumes on two levels)
- 7. Open learning area
- 8. Quiet study area
- 9. Outdoor reading platform with a sea view
- 10. Fore/reception hall for the multipurpose hall
- 11. Lecture hall/screening room
- 12. Foyer for the independent entrance to the multipurpose hall
- 13. Equipment room
- 14. Reception/auxiliary rooms
- 15. Foyer for the library staff office area
- 16. Library staff offices

Connecting the City to the Seaside: A Harmonious Integration

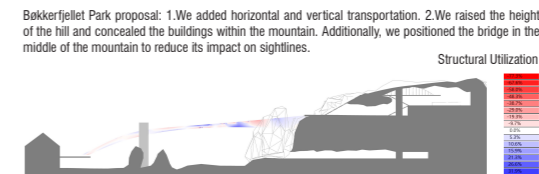
Our design ingeniously unites the city center with the picturesque seaside by integrating the functions of Bekkerfjellet Park's Multimedia Library and Digital Archives atop the hill. We adopted a semi-buried approach, carefully excavating the mountain to a depth of 3 meters. Once the structures were nestled within, they were thoughtfully camouflaged with the original vegetation, preserving the hill's natural charm. This addition elevated the hill's height by three meters, enhancing the panoramic views while mitigating the impact of past real estate development.

The strategic positioning of the bridge, ingeniously located amidst the mountain, ensures unobstructed sightlines, seamlessly connecting both sides of the development. Directly linked to the library's outdoor platform, it facilitates easy access for visitors. Moreover, vertical transportation within the mountain cleverly links Bekkerfjellet Park's summit, the mid-level bridge, and the base of Bombe Sheki, creating an integrated experience that connects the entire hill to the seaside at various elevations.

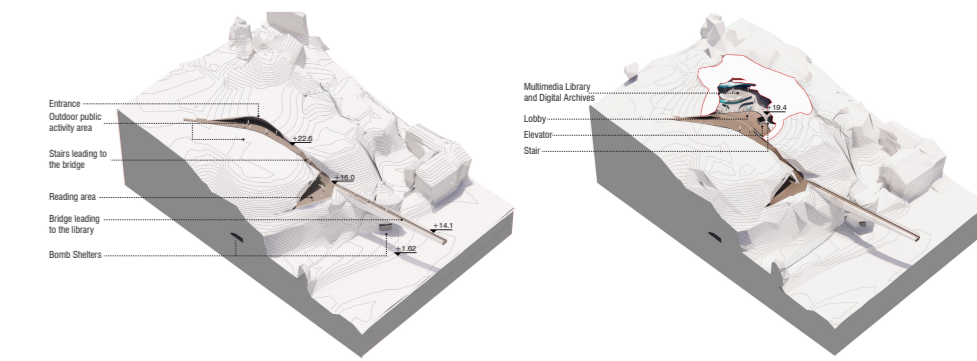
Aesthetically, we skillfully preserved Bekkerfjellet Park's original appearance, harmoniously incorporating the buildings with light-colored exposed aggregate concrete that harmonizes with the natural environment. The smooth concrete serves as an understated entrance, artfully contrasting the existing stone materials and accentuating their texture. This thoughtfully designed integration beautifully blends architecture and nature, offering a serene escape for visitors to enjoy the captivating beauty of both the city and the coast.

Present condition of Bekkerfjellet Park: 1. It was difficult to establish a direct connection to the seaside. 2. The real estate developments negatively impacted the sightlines.

Bekkerfjellet Park proposal: 1. We added horizontal and vertical transportation. 2. We raised the height of the hill and concealed the buildings within the mountain. Additionally, we positioned the bridge in the middle of the mountain to reduce its impact on sightlines.

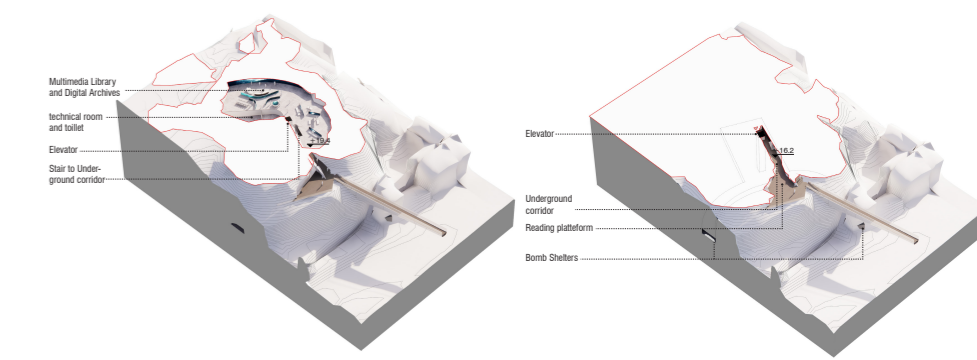


We adopted a more efficient and lightweight design for the bridge structure, and validated it using engineering software, Karamba.



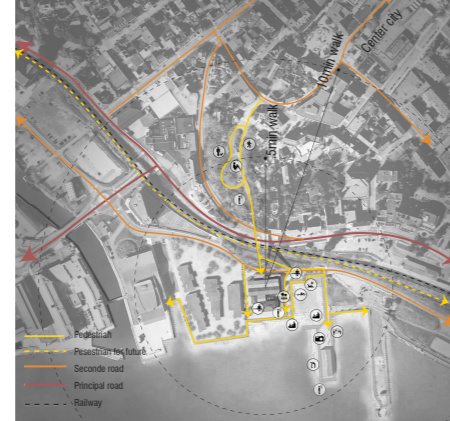
BØKKERFJELLET PARK AXONOMETRIC DRAWING

BØKKERFJELLET PARK AXONOMETRIC DRAWING - L1



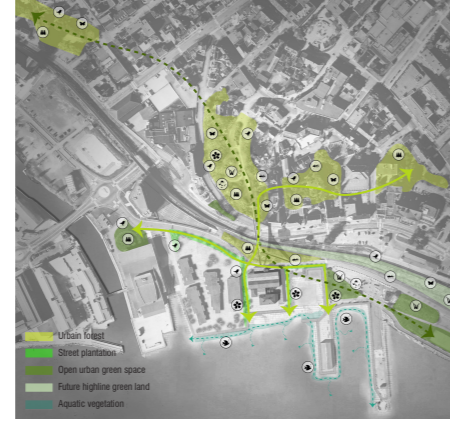
BØKKERFJELLET PARK AXONOMETRIC DRAWING - B1

BØKKERFJELLET PARK AXONOMETRIC DRAWING - B2



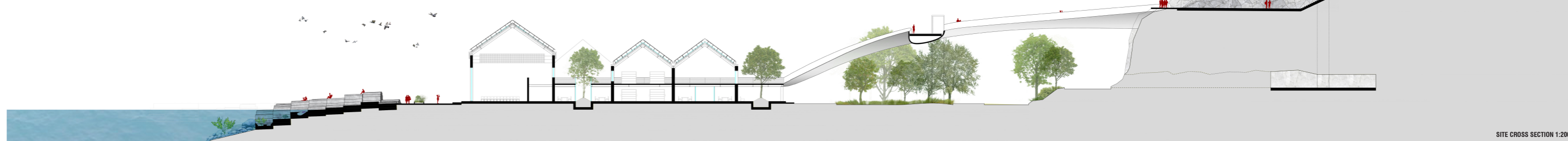
CONNECTION & ACTIVITIES

Establish urban links, create various event spaces, and increase urban vitality



NATURE & ECOLOGY

Create ecological links, create a green ecological environment, and provide habitats for animals and plants.



SITE CROSS SECTION 1:200