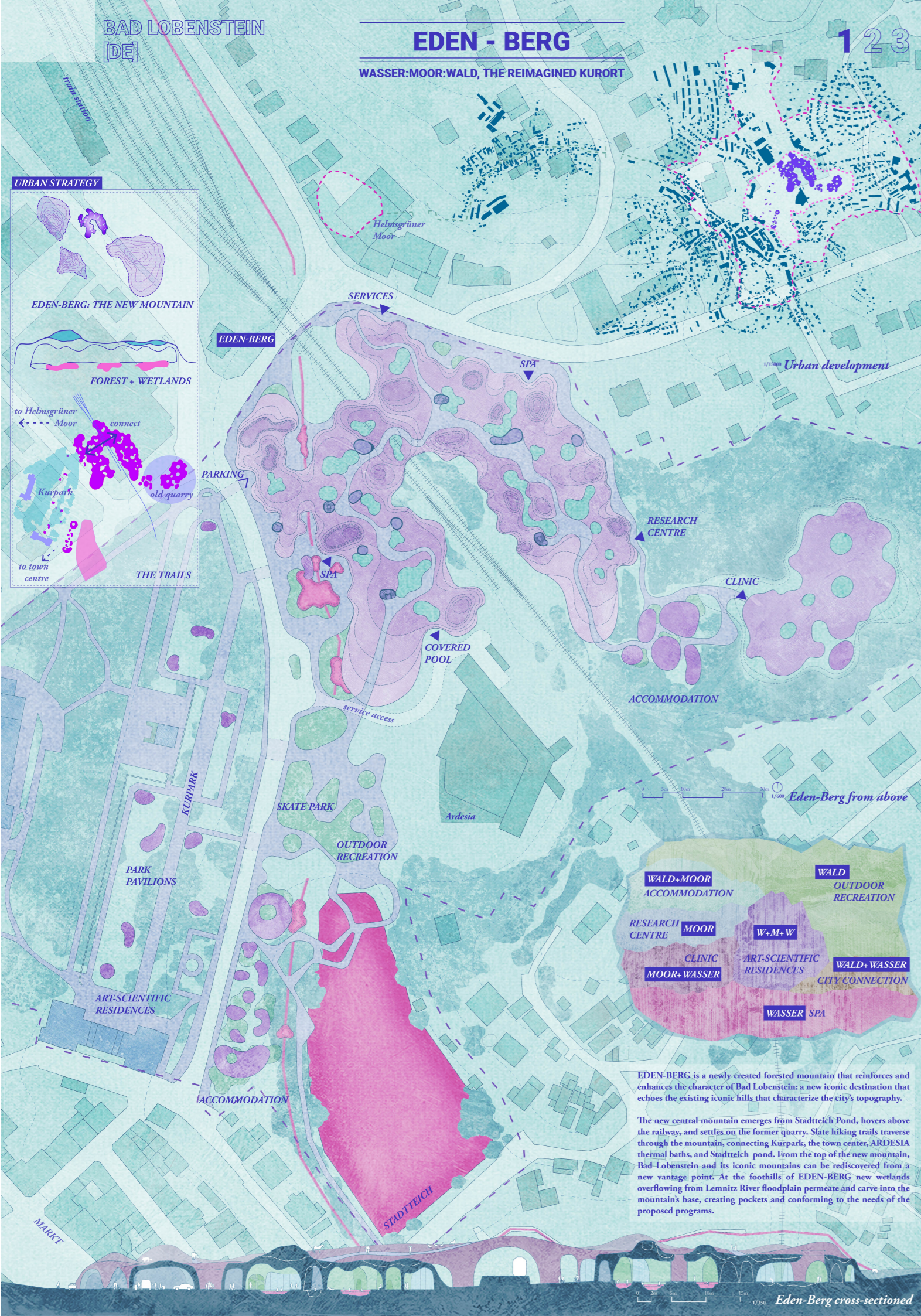
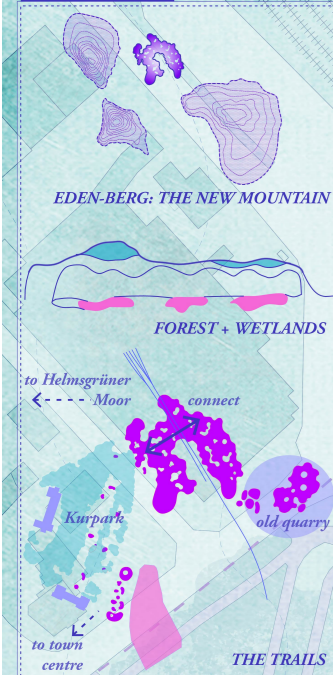


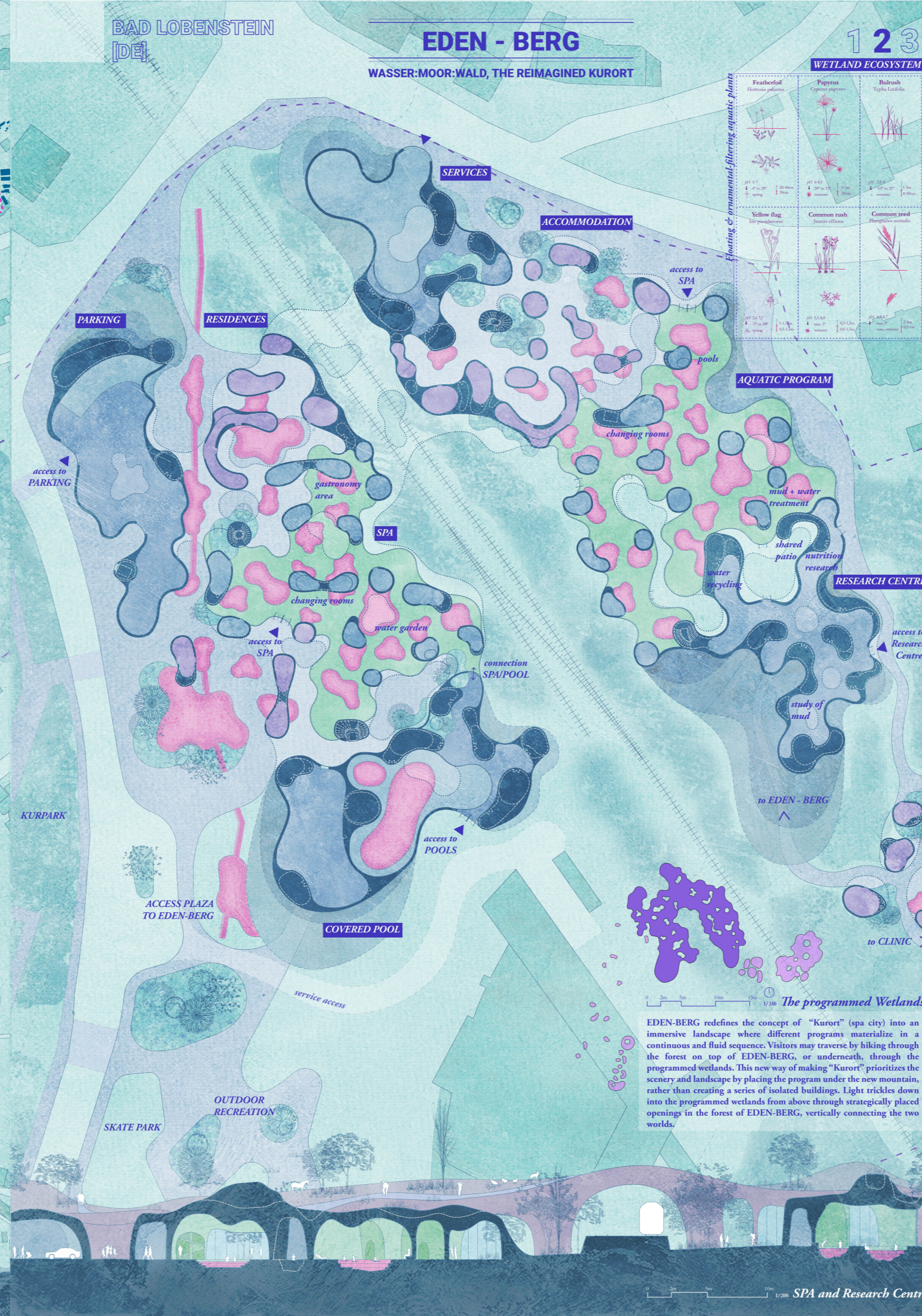
URBAN STRATEGY



EDEN-BERG is a newly created forested mountain that reinforces and enhances the character of Bad Lobenstein: a new iconic destination that echoes the existing iconic hills that characterize the city's topography.

The new central mountain emerges from Stadteich Pond, hovers above the railway, and settles on the former quarry. Slate hiking trails traverse through the mountain connecting Kurpark, the town centres, ARDESA thermal baths, and Stadteich pond. From the top of the new mountain, Bad Lobenstein and its iconic mountains can be rediscovered from a new vantage point. At the foothills of EDEN-BERG new wetlands overflowing from Lennitz River floodplain permeate and carve into the mountain's base, creating pockets and conforming to the needs of the proposed programs.

Eden-Berg cross-sectioned



WETLAND ECOSYSTEM

Featherfall Hornwort plants	Papyrus Common reed	Bulrush Typha Latifolia
Yellow flag Iris pseudacorus	Common reed Phragmites australis	Common reed Phragmites australis

Clustering & ornamental filtering aquatic plants

The programmed Wetlands
 EDEN-BERG redefines the concept of "Kurort" (spa city) into an immersive landscape where different programs materialize in a continuous and fluid sequence. Visitors may traverse by hiking through the forest on top of EDEN-BERG, or underneath, through the programmed wetlands. This new way of making "Kurort" prioritizes the scenery and landscape by placing the program under the new mountain, rather than creating a series of isolated buildings. Light trickles down into the programmed wetlands from above through strategically placed openings in the forest of EDEN-BERG, vertically connecting the two worlds.



Accommodation and Clinic
 EDEN-BERG revisits the traditional spa culture providing bathing environments that accentuate the importance of facility and body awareness, that foster a closer connection with materials and bodies, and that provide experiences of bathing that engage all our senses, intertwining the physical world with the social realm.

Hiking in Eden-Berg

Accommodation and Clinic