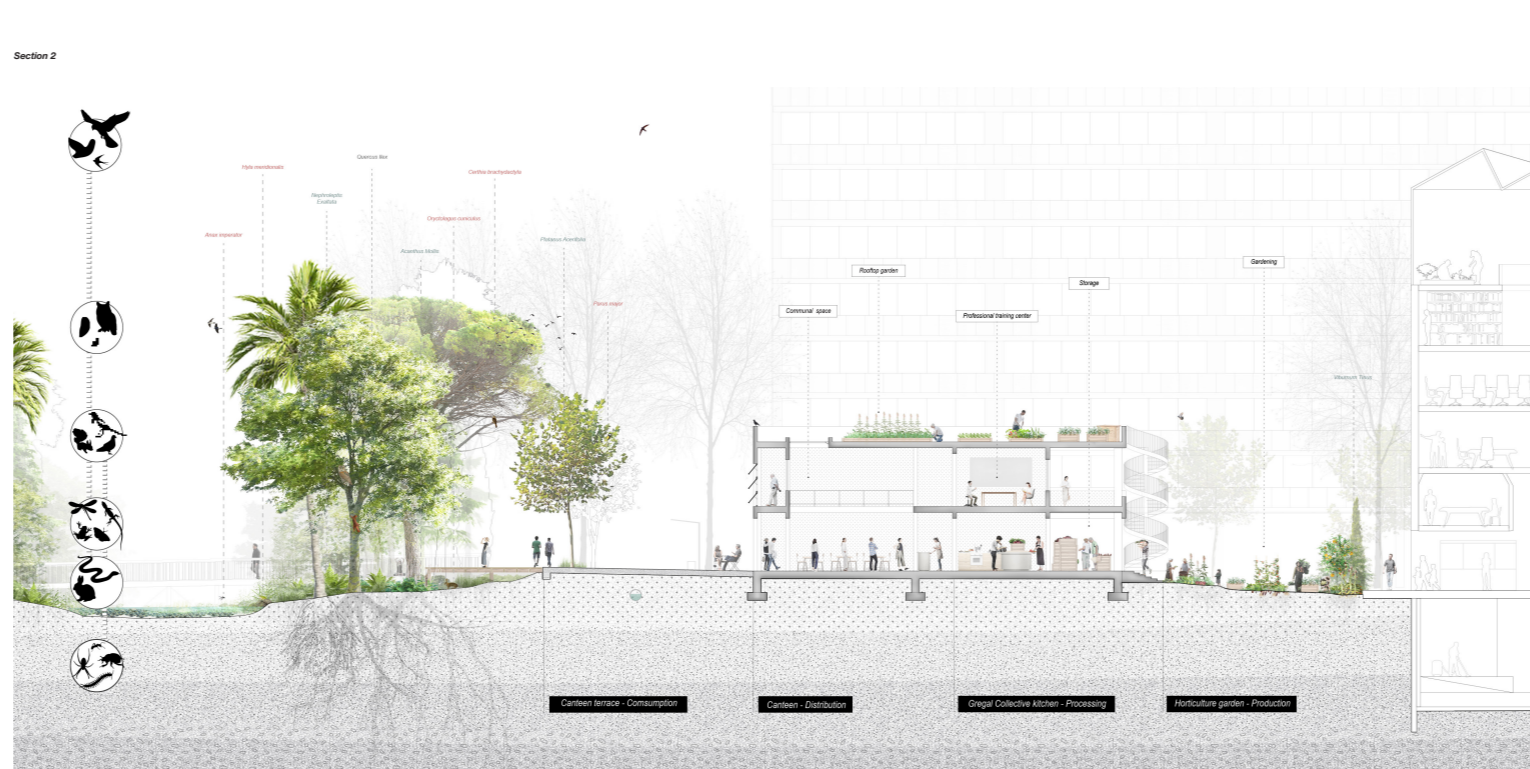
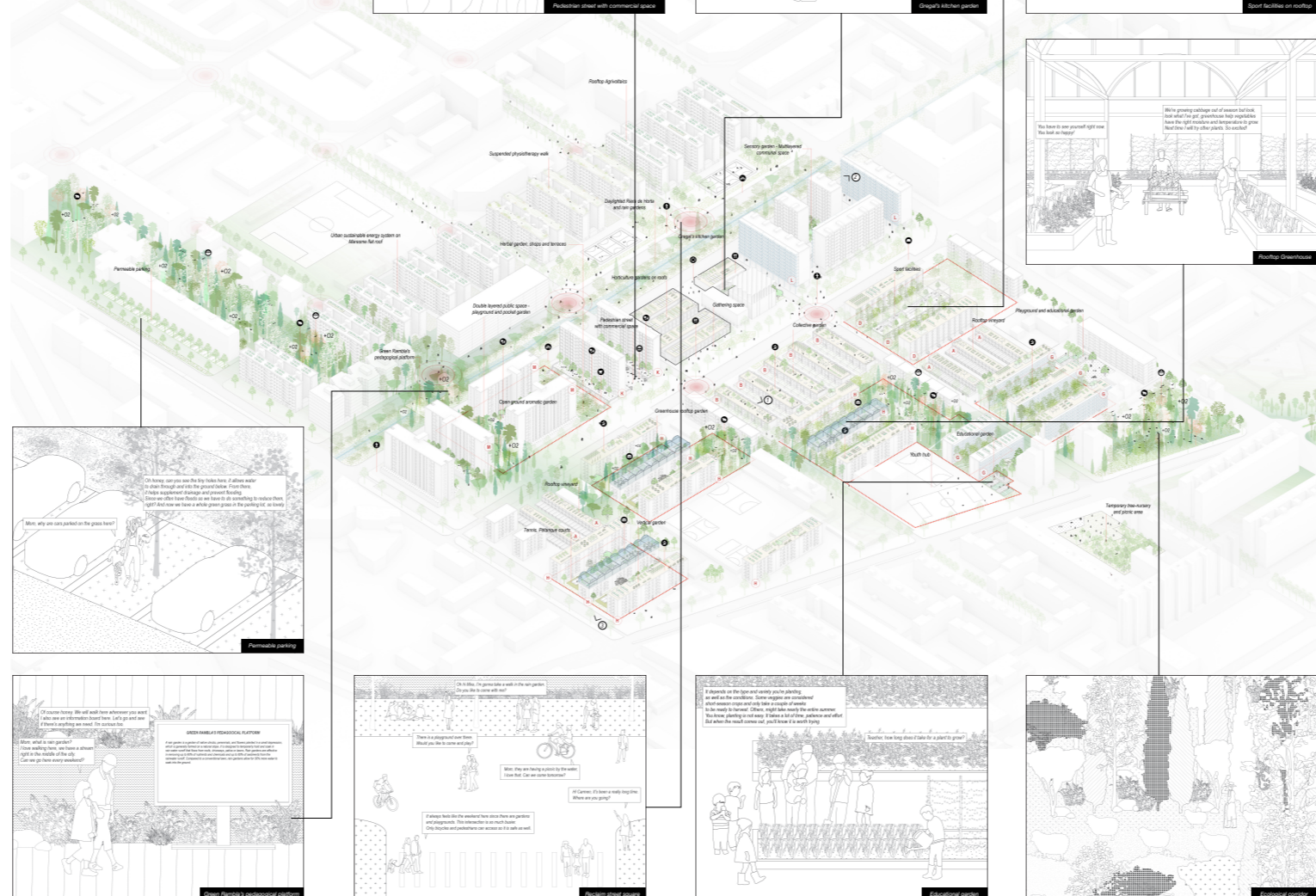


A more inclusive public space

At the neighborhood scale, defining and improving public space is critical to making El Besós (El Besós) safer, more inclusive, and more livable for all. In line with the neighborhood history as a settlement for new immigrants, the project promotes social cohesion through opportunities for passive interaction as well as new economic activities that empower residents for active daily living, self-sufficiency, and celebration of cultural diversity.

Third, terraces including inner courtyards, street corridors, and unlanded spaces near rail and highways can be transformed into rain gardens, tree nurseries, orchards, and even pastures to integrate them as active landscapes within the neighborhood "footprint" boundaries. Spaces become productive container gardens, kitchen gardens, and composting sites, or sensory gardens and playgrounds for residents to use and enjoy. Open spaces adjacent to social services and commercial hubs become prime opportunities for unique educational farms and recreational programs that will attract visitors to the neighborhood.

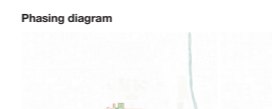


Buildings Toolbox - Typology and Interventions

The housing estates of El Besós (El Besós) are a distinctive artifact, and serve as a powerful testimony to a twentieth-century modernist paradigm of solving urgent social problems and safe, affordable housing for all. These modernist projects are often criticized for being monotonous, offering no sense of belonging, and further concentrating crime and poverty within the city. However, these challenges cannot be blamed on the buildings themselves, but reflect the lack of investment in the intermediate spaces between buildings and the integration of life with the context of the neighborhood and city. This project proposes a toolbox of interventions to extend the domestic space and improve the dialogue between built-up and open spaces. Simple operations can transform the character of the building, improve their thermal performance, and bring diverse space for the community to enhance both public and private life. While housing towers were initially designed to maximize density, new interventions should allow organic and unlanded spaces to be reinvented for better uses.

The project aims above all to foster a sense of community, which is achieved through both public space and architectural interventions. Interventions add or reinvigorate spaces in-between buildings and on rooftops to offer spaces for interaction and active recreation for the community. In particular, there is an emphasis on green space and opportunities to grow food that promote cultural vitality and self-sufficiency. Activating the ground floor as a common space brings life to the streets and the neighborhood as a whole while providing public and new vertical connections including the dialogue between residents. Finally, the advanced character of a facade facing the street is offset by a more transparent interior facade that also has quiet spaces for small gatherings, connection to nature, and habitat for urban biodiversity.

Phasing diagram



Orange garden cluster: The Orange Garden Cluster is located at the edge of the neighborhood, near the Forum del Cultura. It consists of several blocks of buildings, including the former Besós Market. The cluster is characterized by its orange-colored facades and its proximity to the Forum del Cultura. The project aims to improve the cluster by adding green spaces, improving the ground floor, and creating a new ecological corridor.

Connecting the neighborhood 2025: The project aims to connect the neighborhood by 2025 through various interventions. This includes adding green spaces, improving the ground floor, and creating a new ecological corridor. The interventions are designed to improve the quality of life for residents and to create a more inclusive and livable neighborhood.

A new ecological corridor 2030-2040: The project aims to create a new ecological corridor by 2030-2040. This corridor will connect the neighborhood to the surrounding urban fabric and will provide a new habitat for urban biodiversity. The corridor will be created through various interventions, including adding green spaces, improving the ground floor, and creating a new ecological corridor.

