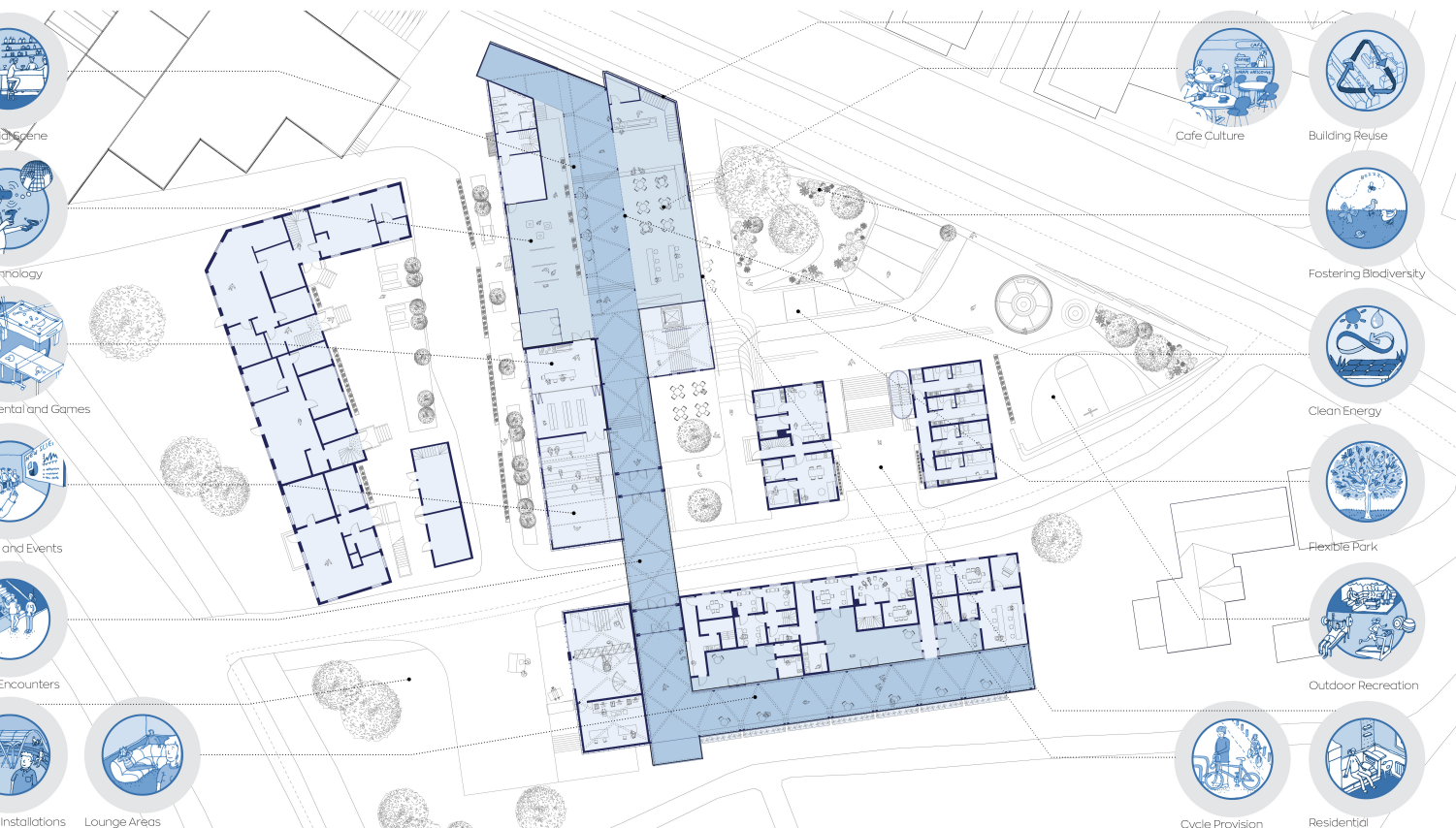
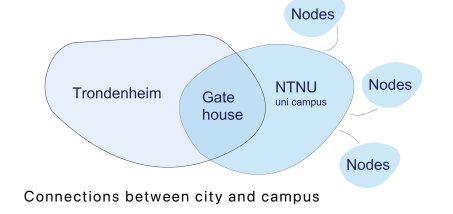
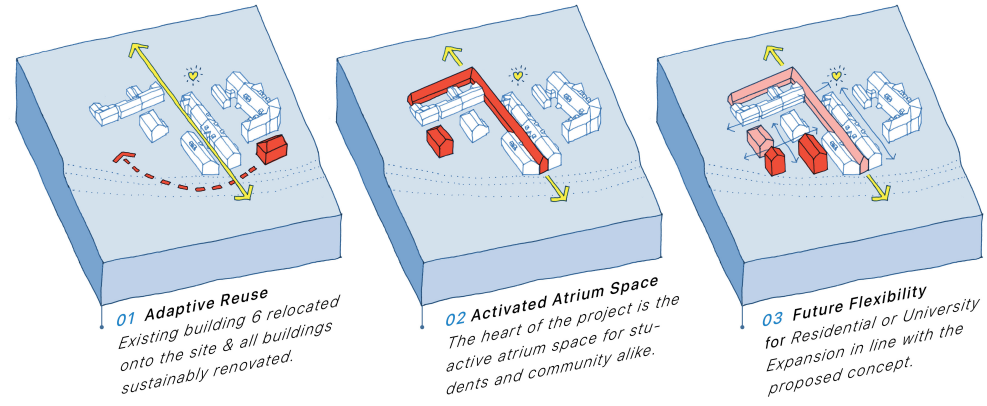


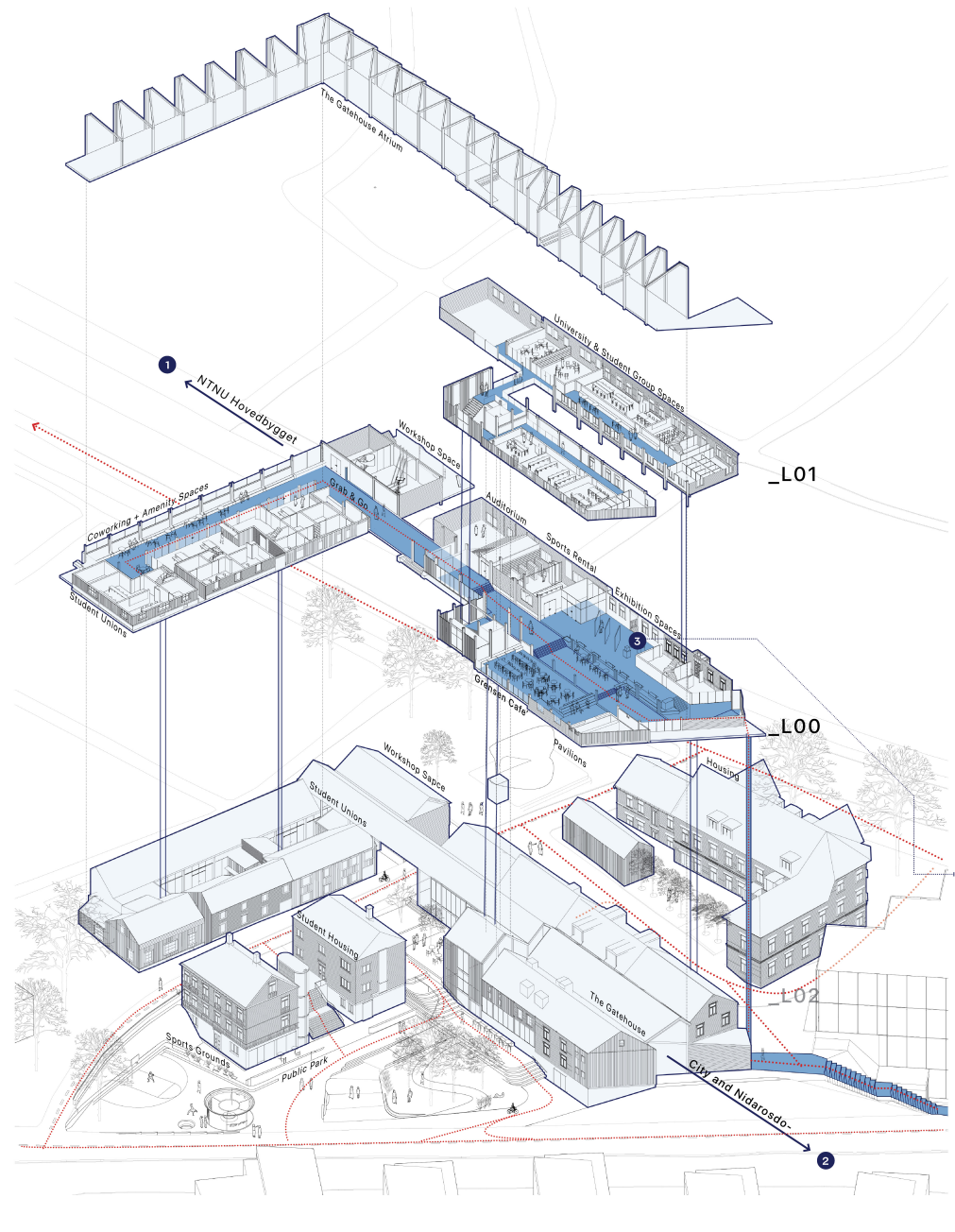


GRENSEN: A LIVING LAB

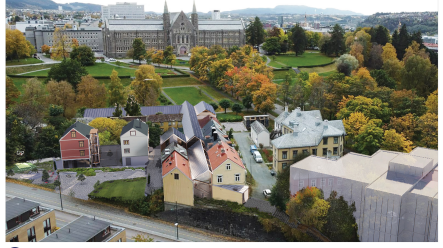
The Gatehouse provides an opportunity to rethink the University's relationship with the broader community, creating a living lab that inhabits 'the border'. The location of Grensen, metaphorically and physically speaks to ideas of transition, integration, and a larger sense of coming together. For these reasons, our proposal seeks to look at the site as a community hub that not only serves the students but also the residents, enlivening the area and contributing to a melting pot of activities, one that cares for the local community, the university population, and the character of place. The proposal works with ideas of integration, merging old and new, merging local and student bodies, and merging technology and tradition to produce spaces that can foster innovation and excellence.



INHABITING THE BORDER



INTERIOR VIEW  
Central atrium facing the city and Nidarosdomen.



1 AN OPEN BORDER  
By creating the space to inhabit 'the border', we replace the perception of the institution as something distinct from its context, with a 'village' where human encounter encourages the dissemination of knowledge.



2 BRIDGING OLD & NEW  
The proposal works with ideas of merging old and new, merging local and student bodies, and merging technology and tradition to produce spaces that can foster innovation and excellence.



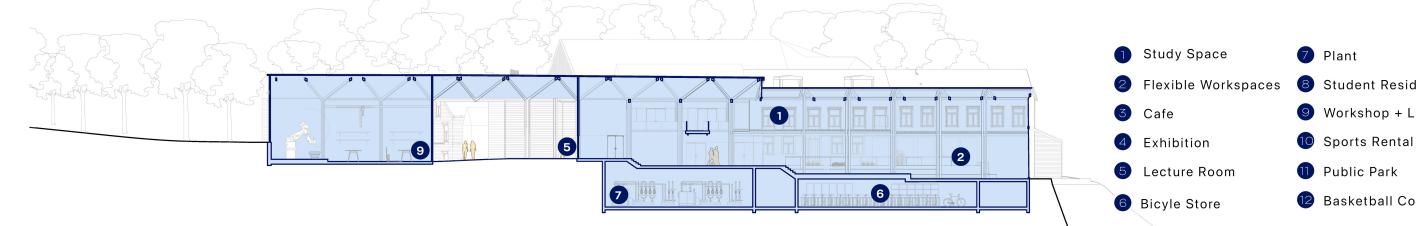
3 OPEN GROUND FLOOR  
The occupiable thoroughfare links into communal spaces on the ground floor such as the exhibition space, the cafe, co-working spaces, the sports equipment rental, and an auditorium.



4 ADAPTIVE REUSE  
This shorter portion of the 'L' acts as both an occupiable corridor as well as breakout space for club offices that have been allocated to 13-15 with the original outhouses returning to their original uses for students to use.

THE GATEHOUSE ATRIUM

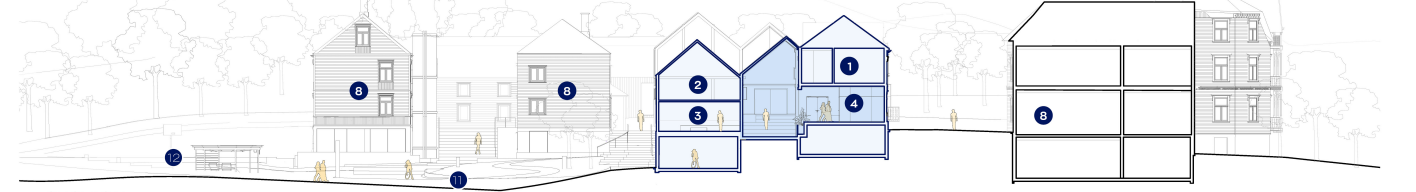
Central atrium facing the city and Nidarosdomen.



- 1 Study Space
- 2 Flexible Workspaces
- 3 Cafe
- 4 Exhibition
- 5 Lecture Room
- 6 Bicycle Store
- 7 Plant
- 8 Student Residents
- 9 Workshop + Lab
- 10 Sports Rental
- 11 Public Park
- 12 Basketball Court

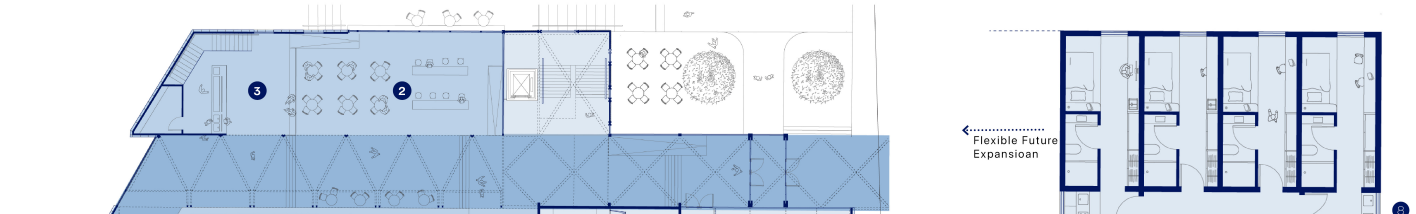
SECTION

Central atrium facing west.



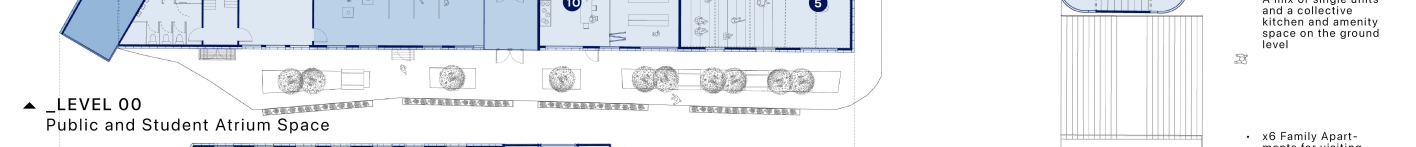
SECTION

Central atrium facing south.



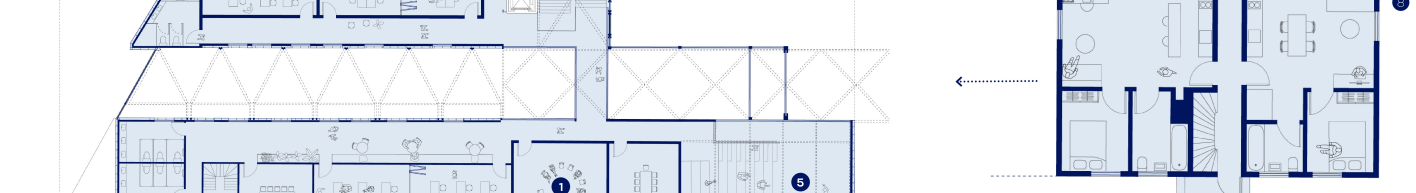
LEVEL 00

Public and Student Atrium Space



LEVEL 01

University Shared Spaces



PLAN

Residential plan layouts with option of extension to existing buildings.