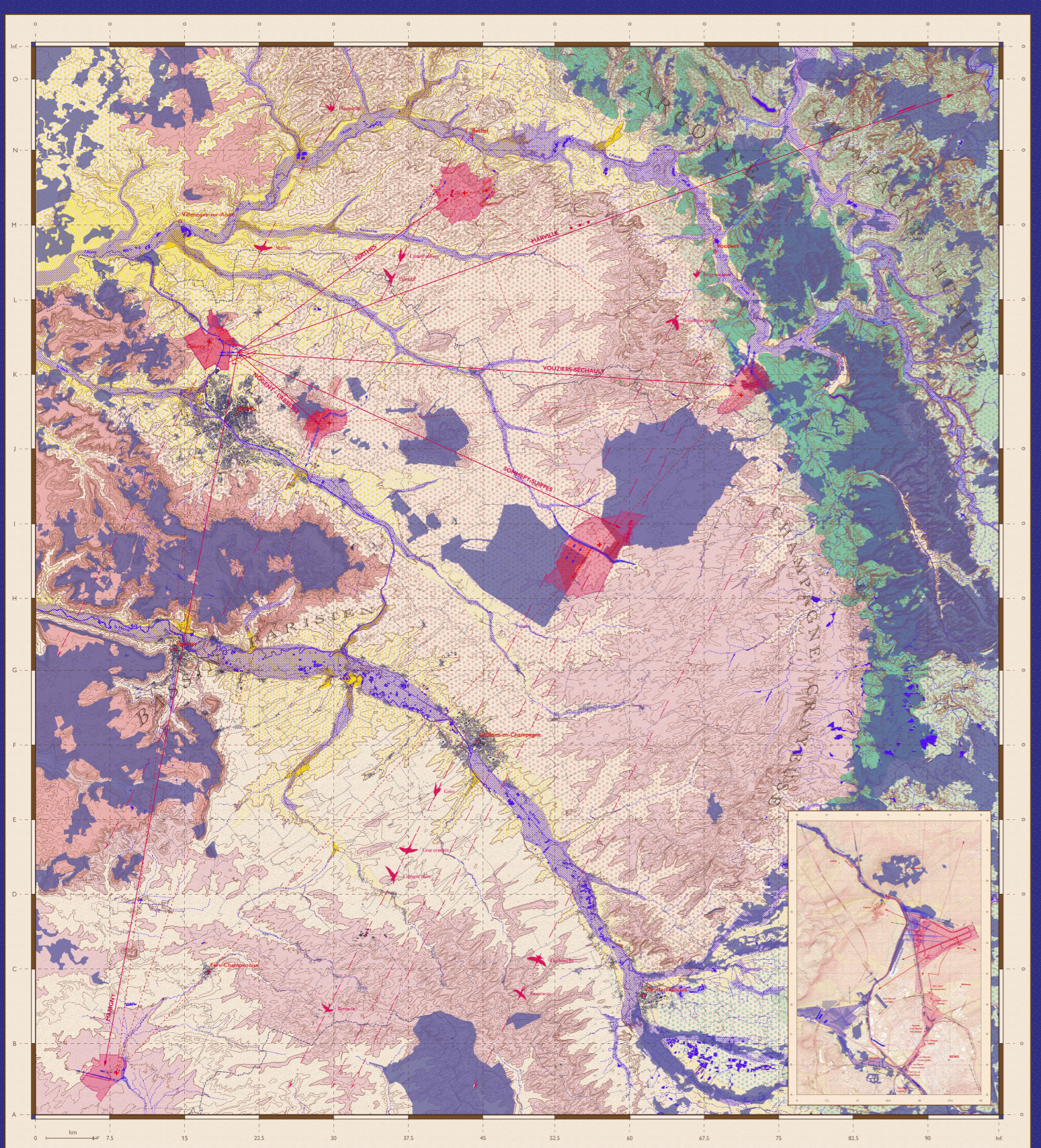
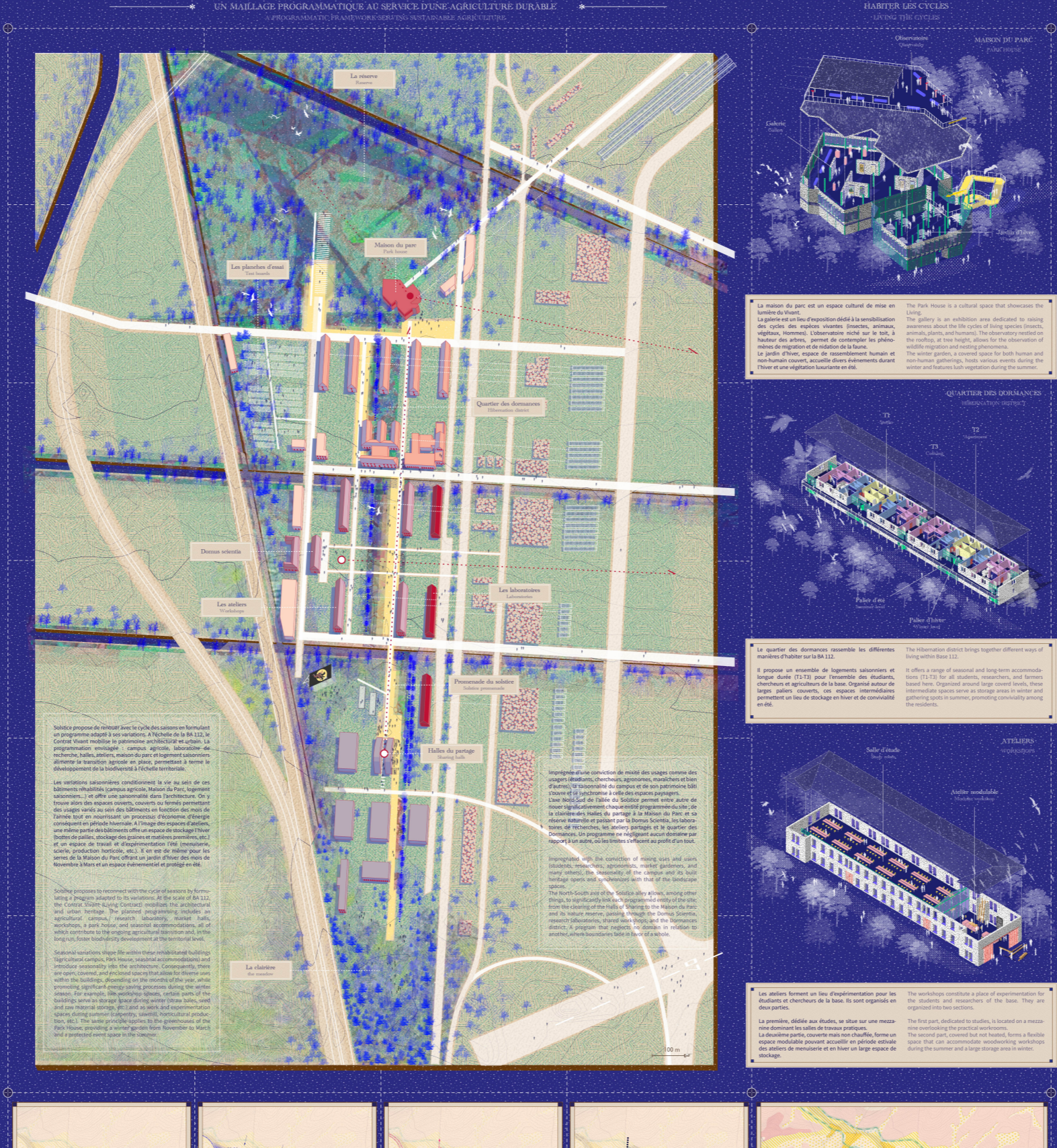


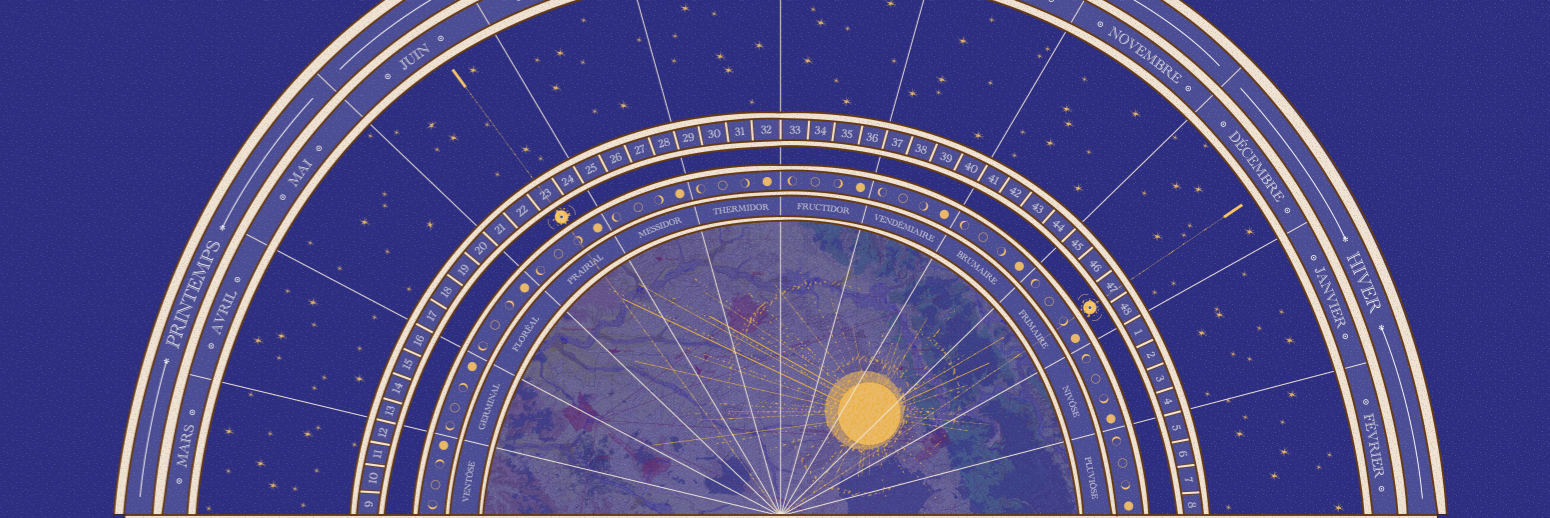
SOLSTICE, OU LE CONTRAT VIVANT



SOLSTICE, OU LE CONTRAT VIVANT



SOLSTICE, OU LE CONTRAT VIVANT



UN SOCLE GÉOLOGIQUE INSÉRÉ À L'AGRICULTURE INTENSIVE
A geological base for intensive agriculture.

DES BASES SATELLITES VECTRICES DE BIODIVERSITÉ TERRITORIALE
Satellite bases as vectors of territorial biodiversity.

AMPLIFIER UN RÉSEAU DE CONTINUITÉS
Enhancing a network of continuities.

A thèse de délimitation climatique, de l'aménagement des milieux et de l'habitat rural
A thesis on climatic delimitation, environment management, and rural housing.

En face de climat changeant, diversifiant ressources, biodiversité des milieux et de l'habitat rural
Facing climate change, diversify resources, biodiversity of environments and rural housing.

Localised in the heart of the Champagne region
Located in the heart of the Champagne region, the BA112 is a rural housing project with a geographical diversity between two rural regions, the Champagne (north) and the Marne (south).

En opposition de ce plan, une histoire militaire s'est mise en place
In opposition to this plan, a military history has been established across the Champagne region.

In addition to this plan, a military history has been established across the Champagne region

Un maillage programmé au service d'une agriculture durable
A programmed network for sustainable agriculture.

HABITER LES CYCLES
Living the cycles.

Le maillon du parc est un espace culturel de mise en lumière de l'art
The park link is a cultural space for art illumination.

Le quartier des Domsange rassemble les différents
The Domsange quarter gathers different types of housing.

Les ateliers forment un lieu d'expérimentation pour les étudiants et chercheurs de la base
The workshops are an experimentation space for students and researchers.

Mardi 12 Octobre, 16h30
Tuesday, October 12, 16:30 pm.

Mercredi 13 Octobre, 16h30
Wednesday, October 13, 16:30 pm.

Jeudi 14 Octobre, 16h30
Thursday, October 14, 16:30 pm.

Vendredi 15 Octobre, 16h30
Friday, October 15, 16:30 pm.

Samedi 16 Octobre, 16h30
Saturday, October 16, 16:30 pm.

Dimanche 17 Octobre, 16h30
Sunday, October 17, 16:30 pm.

Un calendrier des événements
An event calendar.

La maison du parc est un espace culturel de mise en lumière de l'art
The park link is a cultural space for art illumination.

Le quartier des Domsange rassemble les différents
The Domsange quarter gathers different types of housing.

Les ateliers forment un lieu d'expérimentation pour les étudiants et chercheurs de la base
The workshops are an experimentation space for students and researchers.

Mardi 10 Janvier, 11h30
Tuesday, January 10, 11:30 am.

Mercredi 11 Janvier, 11h30
Wednesday, January 11, 11:30 am.

Jeudi 12 Janvier, 11h30
Thursday, January 12, 11:30 am.

Vendredi 13 Janvier, 11h30
Friday, January 13, 11:30 am.

Samedi 14 Janvier, 11h30
Saturday, January 14, 11:30 am.

Dimanche 15 Janvier, 11h30
Sunday, January 15, 11:30 am.

Monday, January 16, 11:30 am.

Tuesday, January 17, 11:30 am.

Wednesday, January 18, 11:30 am.

Thursday, January 19, 11:30 am.

Friday, January 20, 11:30 am.

Saturday, January 21, 11:30 am.

Sunday, January 22, 11:30 am.

Monday, January 23, 11:30 am.

Tuesday, January 24, 11:30 am.

Wednesday, January 25, 11:30 am.

Thursday, January 26, 11:30 am.

Friday, January 27, 11:30 am.

Saturday, January 28, 11:30 am.

Sunday, January 29, 11:30 am.

Monday, January 30, 11:30 am.

Tuesday, January 31, 11:30 am.

Wednesday, February 1, 11:30 am.

Thursday, February 2, 11:30 am.

Friday, February 3, 11:30 am.

Saturday, February 4, 11:30 am.

Sunday, February 5, 11:30 am.

Monday, February 6, 11:30 am.

Tuesday, February 7, 11:30 am.

Wednesday, February 8, 11:30 am.

Thursday, February 9, 11:30 am.

Friday, February 10, 11:30 am.

Saturday, February 11, 11:30 am.

Sunday, February 12, 11:30 am.

Monday, February 13, 11:30 am.

Tuesday, February 14, 11:30 am.

Wednesday, February 15, 11:30 am.

Thursday, February 16, 11:30 am.

Friday, February 17, 11:30 am.

Saturday, February 18, 11:30 am.

Sunday, February 19, 11:30 am.

Monday, February 20, 11:30 am.

Tuesday, February 21, 11:30 am.

Wednesday, February 22, 11:30 am.

Thursday, February 23, 11:30 am.

Friday, February 24, 11:30 am.

Saturday, February 25, 11:30 am.

Sunday, February 26, 11:30 am.

Monday, February 27, 11:30 am.

Tuesday, February 28, 11:30 am.

Wednesday, February 29, 11:30 am.

Thursday, February 30, 11:30 am.