

# TORREVEGACY

EL LEGADO DE TORRELAVEGA

PRESERVING NATURE-EMBRACING PROGRESS  
PRESERVAR LA NATURALEZA-ACEPTAR EL PROGRESO

# TORREVEGACY

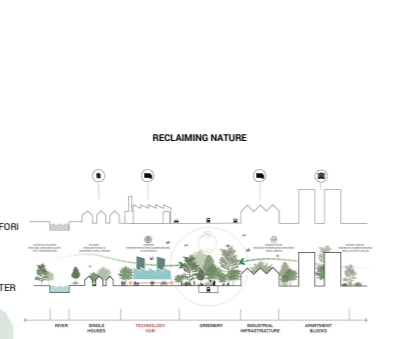
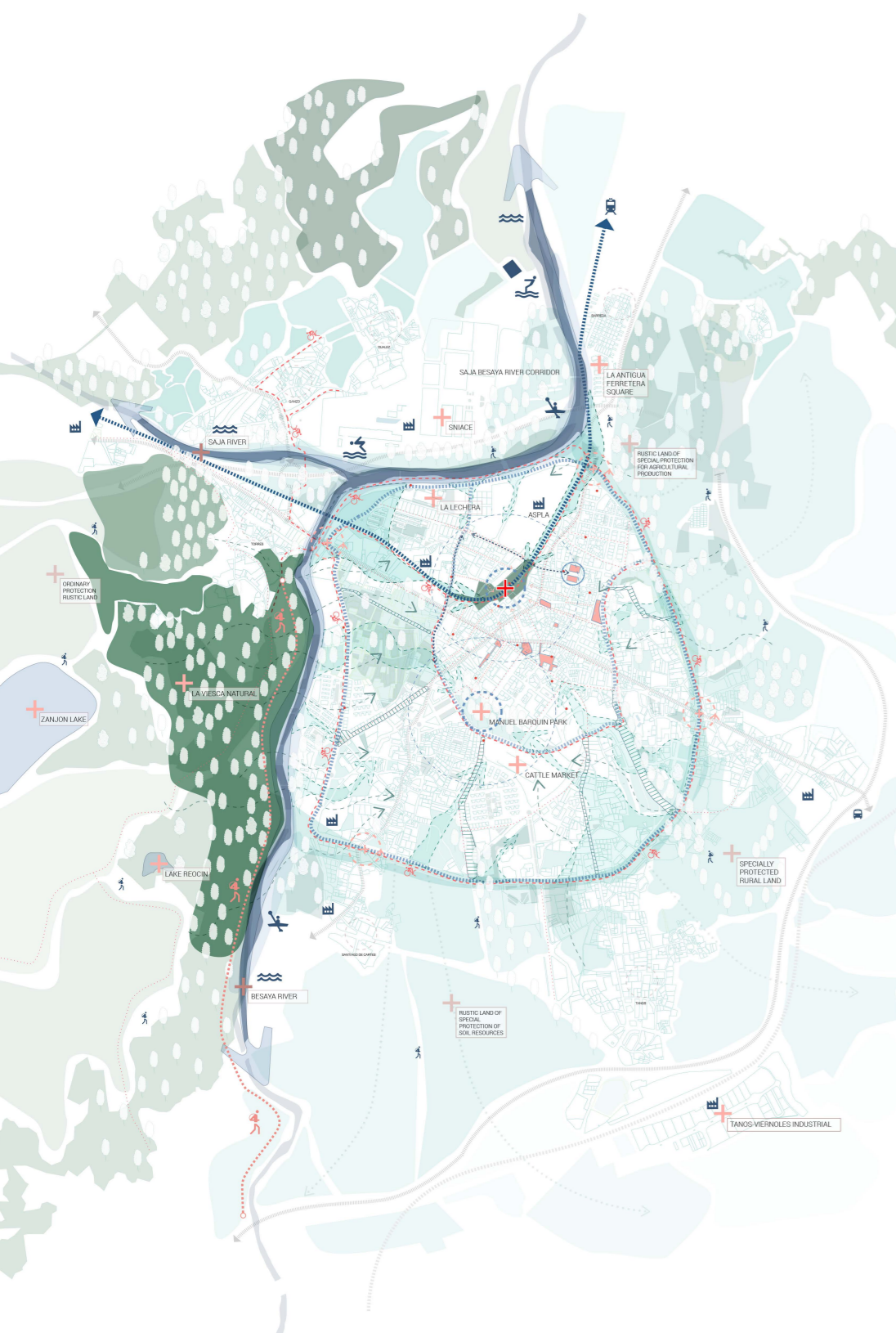
EL LEGADO DE TORRELAVEGA

RENATURALISED CORRIDOR  
CORREDOR RENATURALIZADO

# TORREVEGACY

EL LEGADO DE TORRELAVEGA

INDUSTRIAL HYBRID  
HIBRIDO INDUSTRIAL

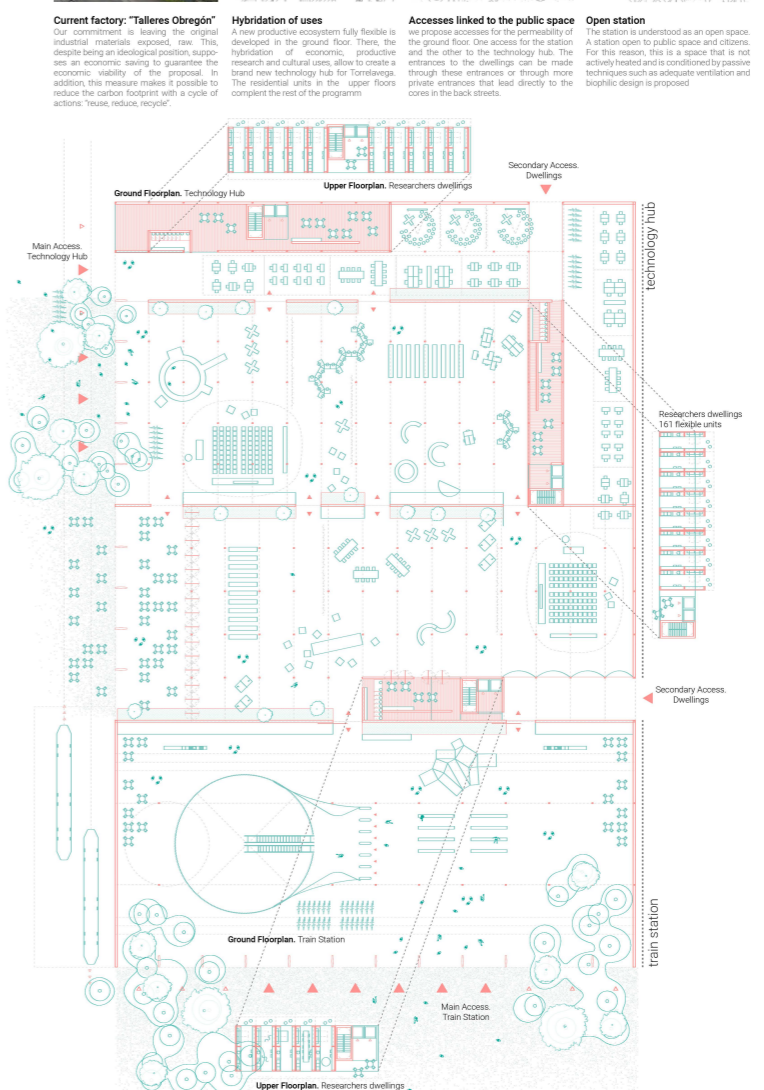
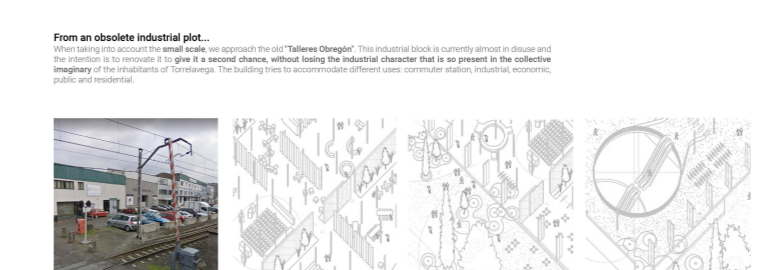
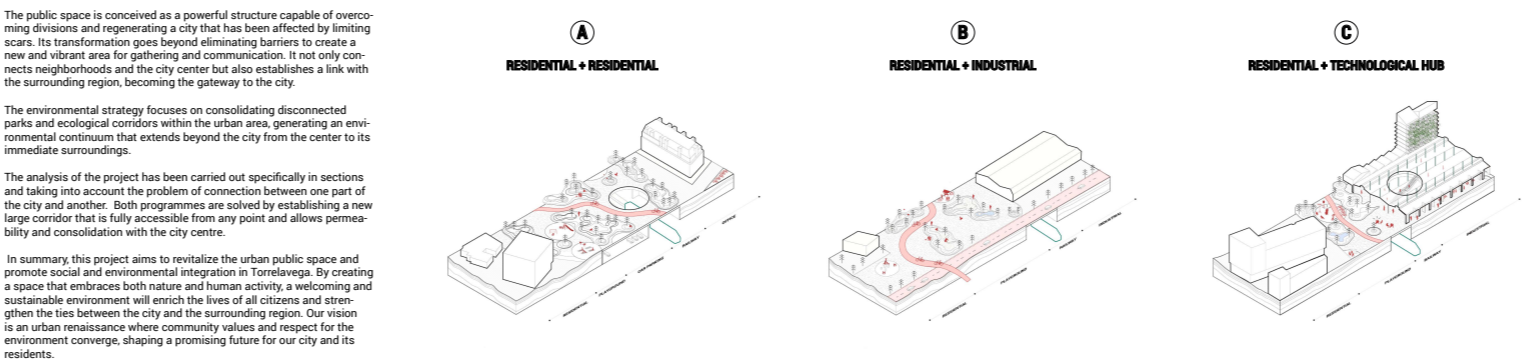
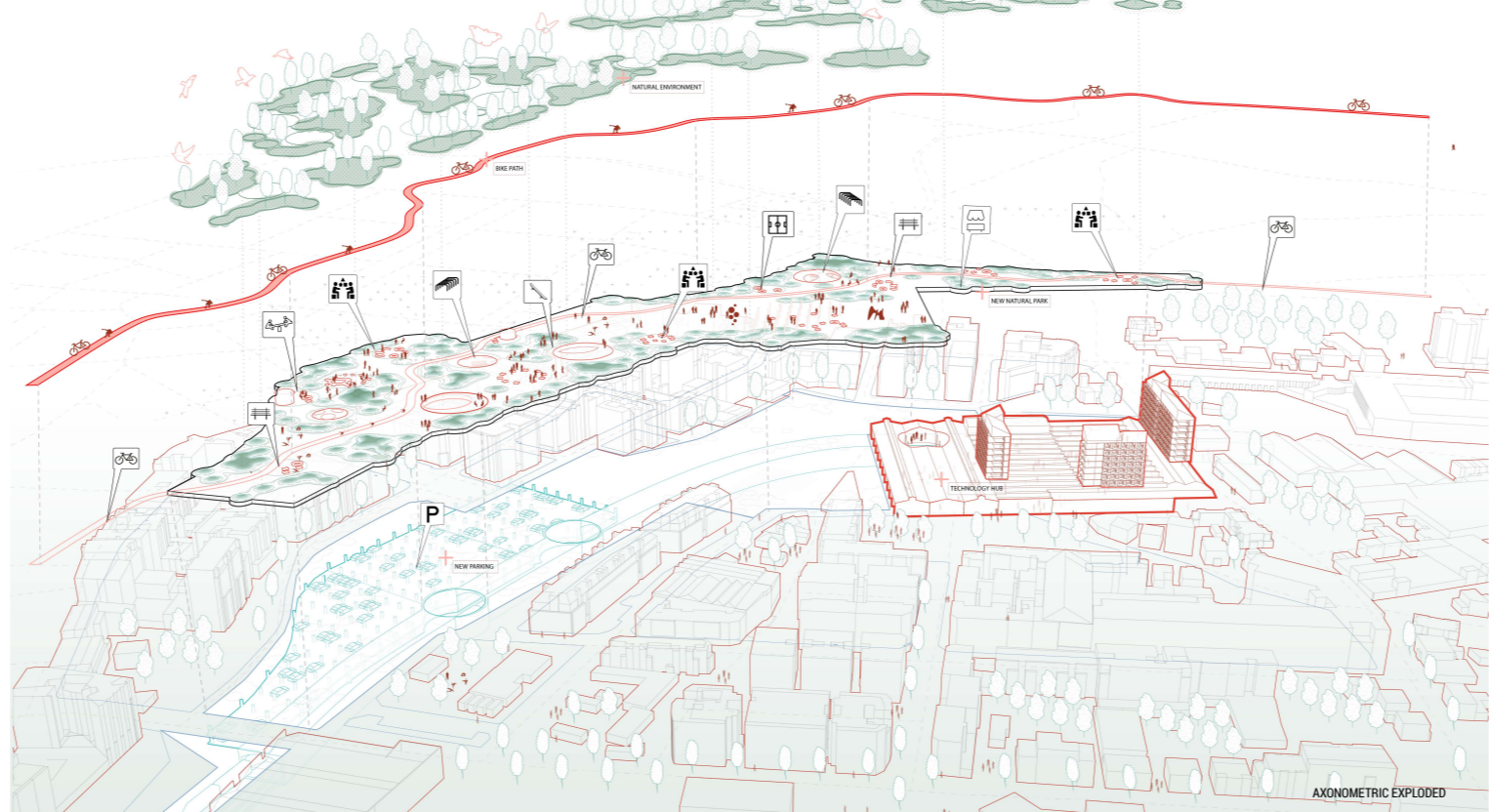
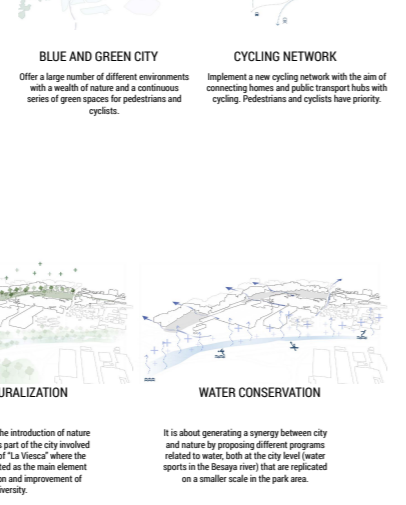
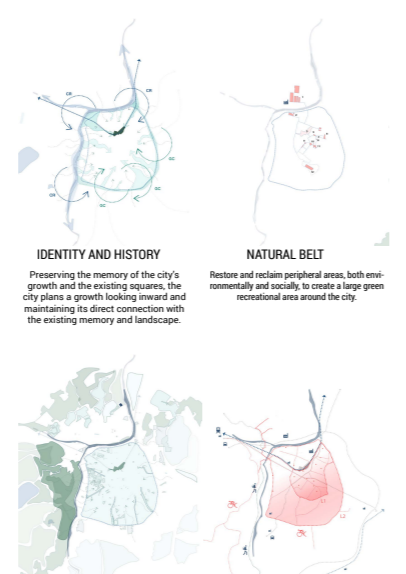


**FROM PRODUCER TO RECONNECTOR CITY**

The new landscape created in the interior of Torrelavega is the result of different ecological strategies. On the one hand, the creation of green corridors towards the interior of the city, the recovery of vacant spaces with autochthonous tree areas, the creation of activities and the use of the surrounding rivers to enhance the environmental balance with water as the main element. Industrial areas are given a character more in keeping with the quality of the air and the new uses in the city with the Technology Hub as a reference of direct coexistence with a new green corridor in the city.

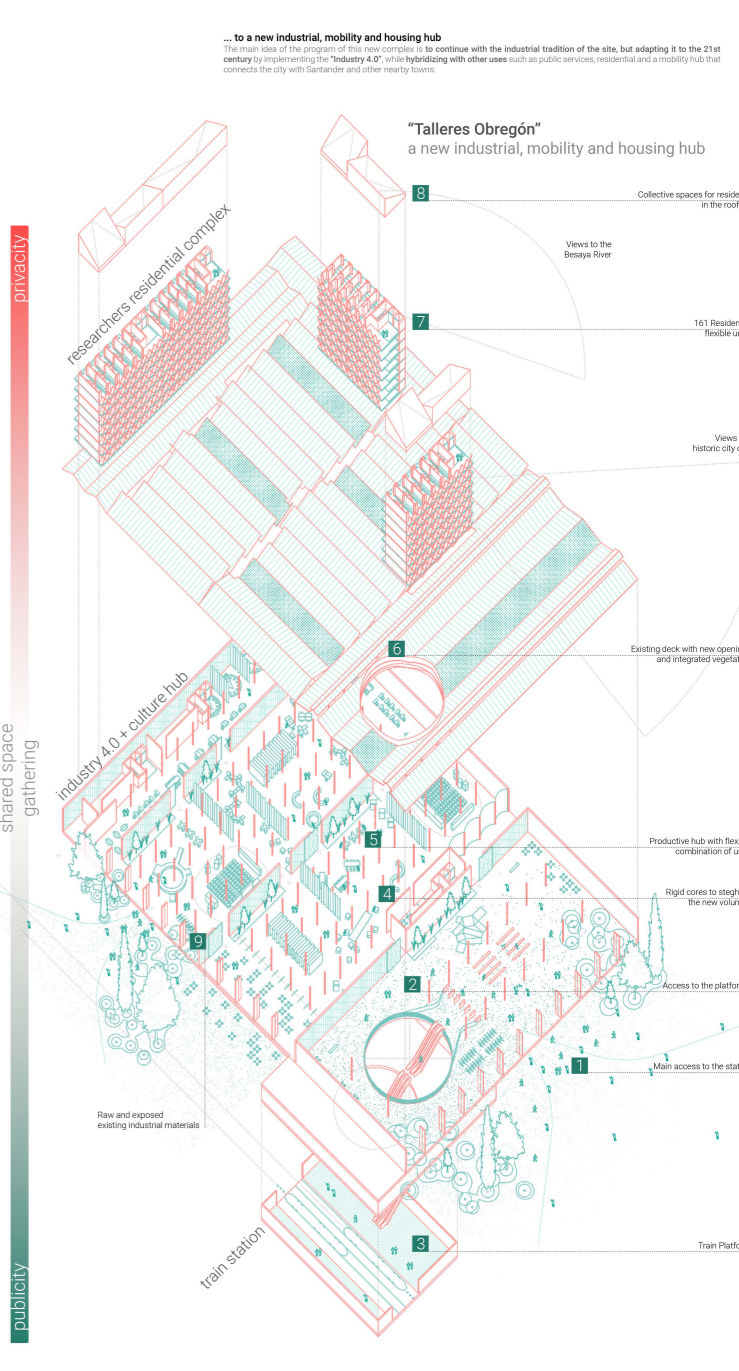
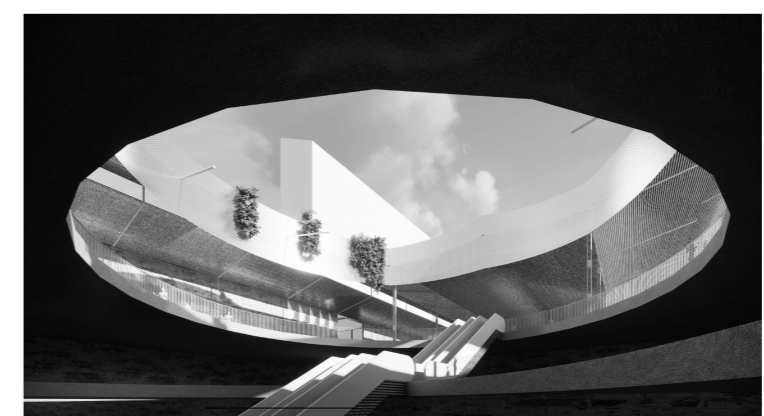
The proposal does not only propose the connection between the northern part of the city and the southern part, it goes further, it seeks to create a new way of life for the residents of Torrelavega and to feel that nature is part of the city and it is not possible to have a better quality future if it is not produced in a direct and close coexistence with it.

Two green corridors are proposed, one of them developed in the proposal solving the connection with the city and the other one proposed at the entrance of the east city, as a future connector and gateway to the city.



**An open station and a new productive ecosystem**

Regarding the integration with the immediate surroundings of the square, we propose accesses that achieve significant permeability with the adjacent public space on the ground floor. One access for the station and the other to the technology hub. The entrances to the dwellings can be made through these entrances or through more private entrances that lead directly to the cores in the back streets. The station is understood as an open space. A station open to public space and citizens. For this reason, this is a space that is not actively heated and conditioned by passive techniques such as adequate ventilation and biophilic design is proposed. This means that the station is more accessible to the public and has the consequent energy savings. The residential blocks that rise above the current level of the roof are achieved by reinforcing the current steel structure with concrete cores on the ground floor. Once the current roof is exceeded, a cross-laminated timber structure (CLT) is proposed with the consequent reduction in carbon emission. A lattice with vegetation in the south allows passive conditioning of the houses and protects them in summer.



**A new technology hub for Torrelavega**

"Industry 4.0" includes disciplines such as big data, Internet of Things, Artificial intelligence, cybersecurity, Cloud Computing and Additive Manufacturing. Torrelavega must be a power in Spain and Europe in coping with this type of industrial development and must become the main focus of Industry 4.0 in Spain. For this reason, with the help of national and European funds, the aim is to ensure that this plan is coordinated by researchers and developers from Cantabria (thanks to an agreement with the University of Cantabria) and the rest of Europe with mobility grants. The houses on the upper floors of the building will serve to accommodate researchers who need it. The open, fluid and dynamic spaces on the ground floor makes it possible to control this economic activity with others with changing and flexible jobs. There are also avoidance spaces for the town hall such as exhibitions or research samples. In addition, this is combined with the intention of the building of the underground train station, making it possible to create a new hub with synergies between different groups of society. All this allows us to go from a post with obsolete industrial uses in today's society to a new industrial, mobility and residential hub.

