

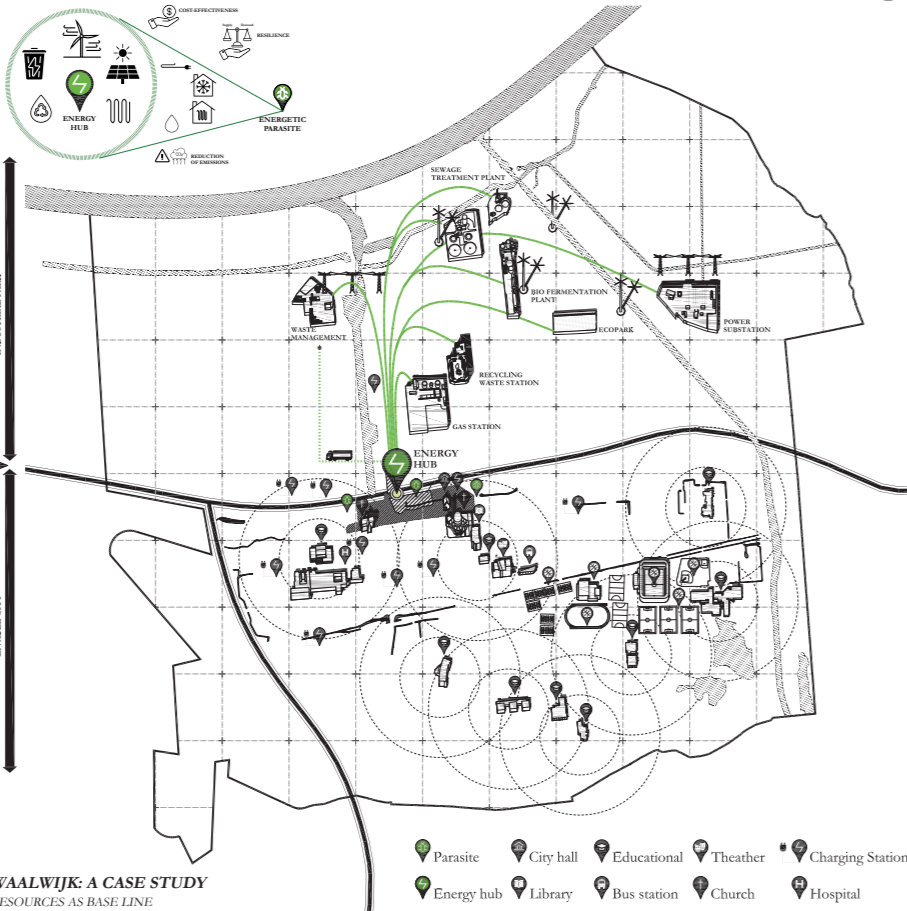
WAAIJK (NL)

Waalwijk proposes a site that implies a double challenge. Climate Safari considers the relation with the surrounding historical city, as well as the relation to the other side of the Highway, taking advantage of an existing industrial park. Moreover, this site is adjacent to the main ring of the city, a strategic and suitable location for a new bus station, perfectly connected with the Highway.

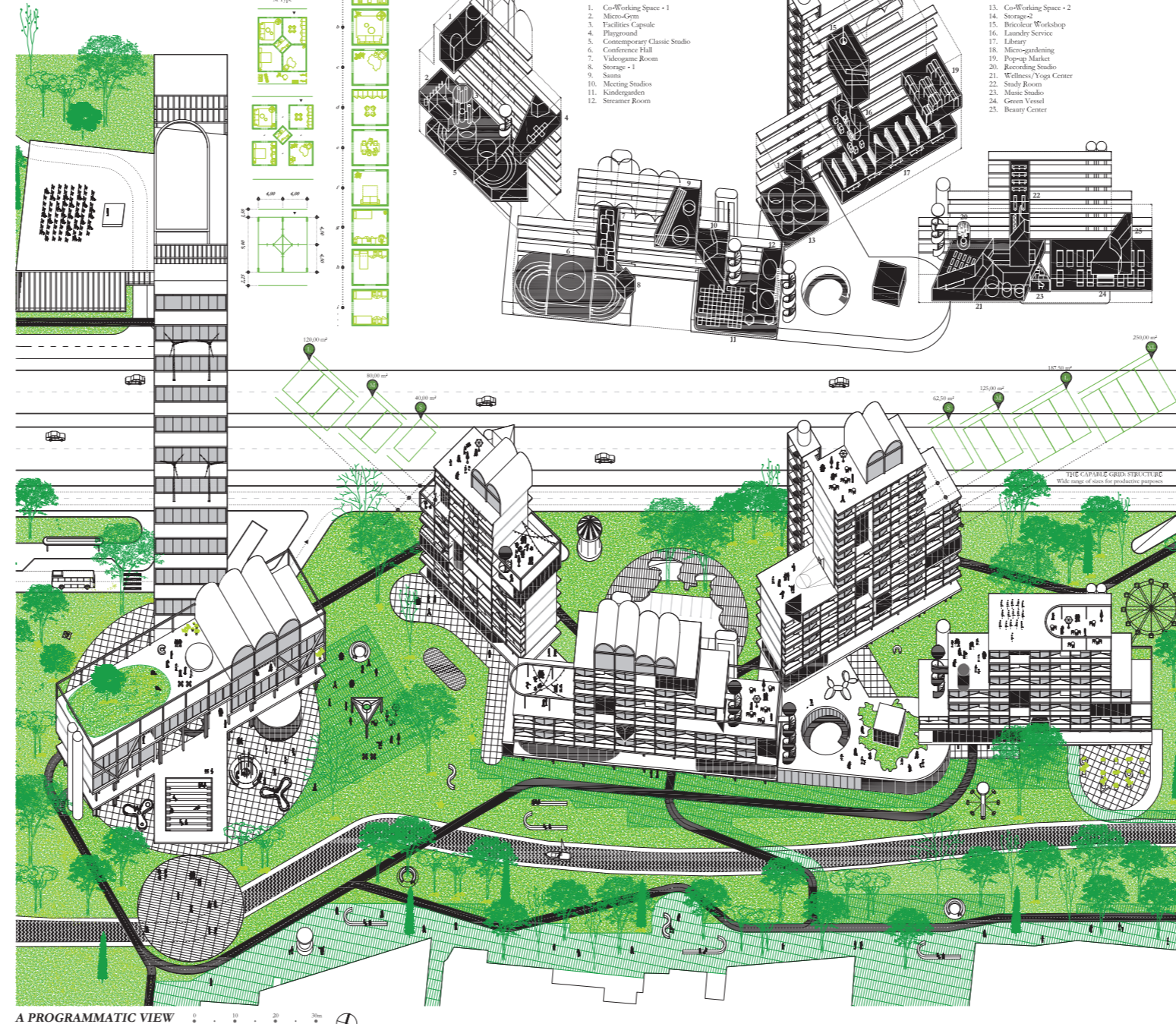
The Highway marks a clear separation between City and Industry. Therefore, so Climate Safari develops an ambiguous solution that lets solve both parts of the city. Climate Safari not just proposes a cross for the industrial park for bicycle and pedestrian, proceeds to create a HUB transfer between the urban and industrial, through a series of supplementary programs.

Consequently, City and Industry could benefit from each other.

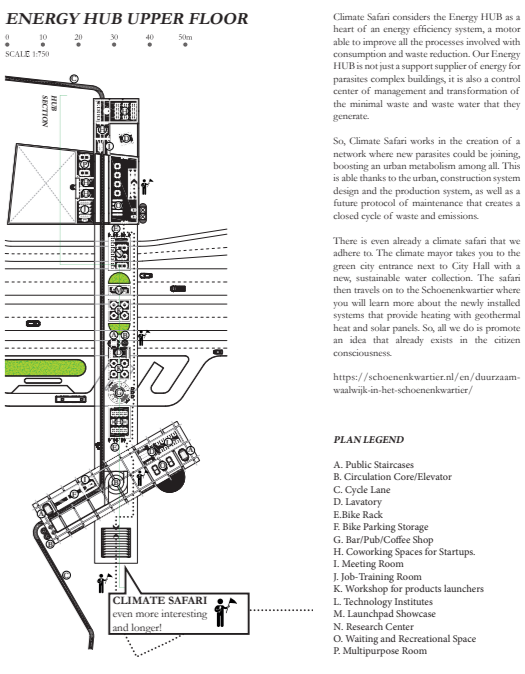
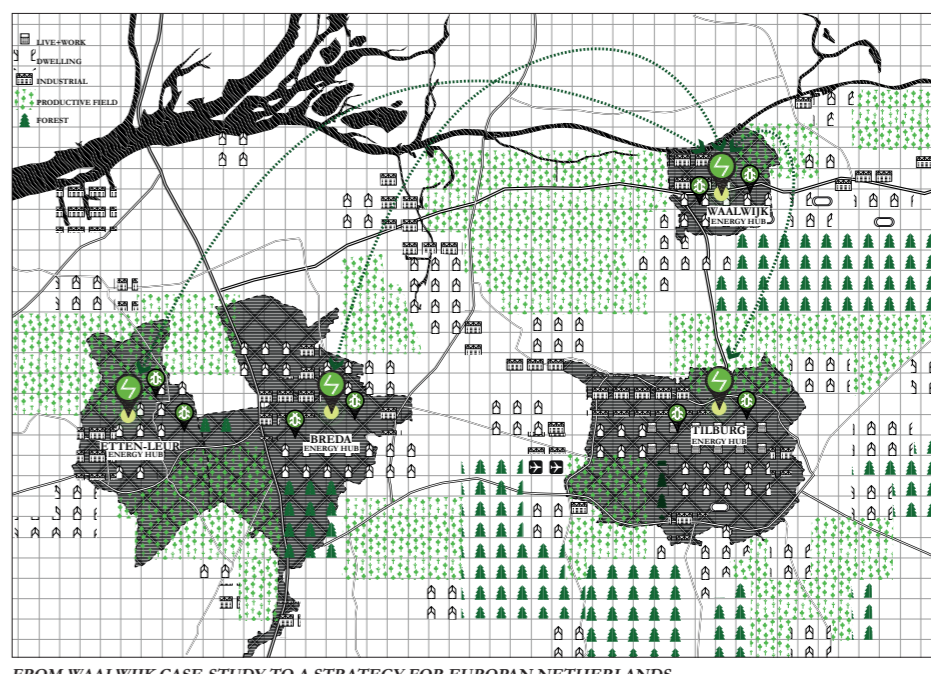
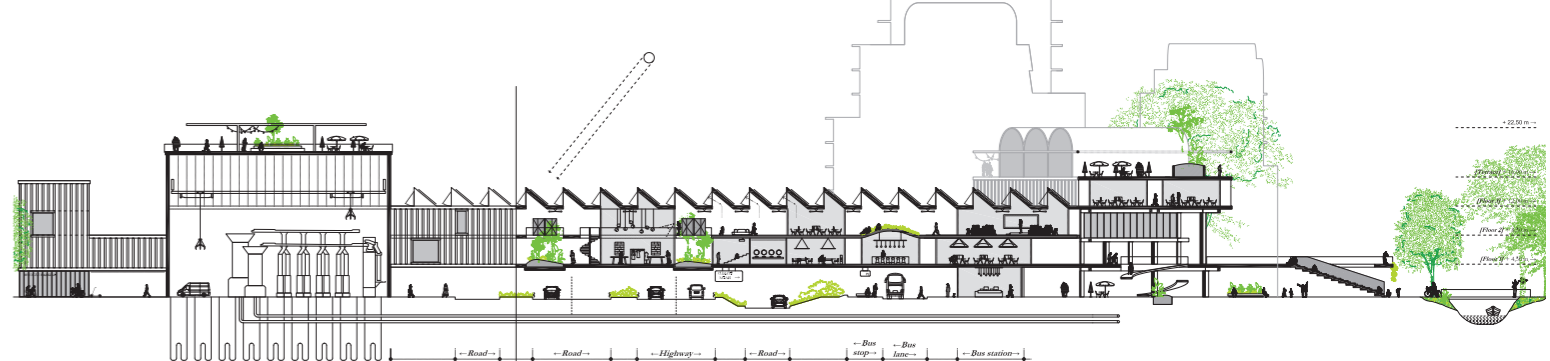
This HUB could not be just a HUB, this should be something else. For this purpose, Climate Safari takes advantage of its location to turn this HUB into an Energy HUB: an energy generator and a waste management and recycling Center for the future urban development.



WAAIJK (NL)



WAAIJK (NL)



Climate Safari considers the Energy HUB as a heart of an energy efficiency system, a motor able to improve all the processes involved with consumption and waste reduction. Our Energy HUBs are not just support suppliers of energy for private complex buildings, it is also a central center of management and transformation of the material waste and waste water that they generate.

So, Climate Safari works in the creation of a network where new parameters could be joining, housing an urban metabolism among all. This is able thanks to the urban, construction system design and the production system, as well as a future protocol of maintenance that creates a closed cycle of waste and emissions.

There is even already a climate safari that we adhere to. The climate safari takes you to the green city entrance next to City Hall with a new, sustainable waste collection. The safari then moves on to the Scheepenvaart where you will learn more about the newly installed systems that provide heating with geothermal heat and solar panels. So, all we do is promote an idea that already exists in the citizen consciousness.

<https://scheepenvaart.nl/en/duurzaam-waalwijk-in-het-scheepenvaart/>

PLAN LEGEND

- A. Public Staircases
- B. Circulation Core/Elevator
- C. Cycle Lane
- D. Lavatory
- E. Bike Rack
- F. Bike Parking Storage
- G. Bar/Pub/Coffee Shop
- H. Co-working Space for Startups
- I. Meeting Room
- J. Job Training Room
- K. Workshop for products launchers
- L. Technology Institutes
- M. Landscaped Showcase
- N. Research Center
- O. Waiting and Recreational Space
- P. Multipurpose Room

A DESIGN MANUAL

