

BØKKERFJELLET: A SHARED GARDEN AND A NEW GATE TO THE HARBOUR

The constellation of cliffs that has shaped Larvik since its earliest development plays a vital role in defining the city's identity. The recognizable Larvikite formations are evident in historical drawings and maps, serving as observation points to oversee and control the surrounding territory due to their 360° view.

However, Bøkkerfjellet poses both a visual link and a physical obstacle between the city center and the harbour. To ensure the preservation of this natural landmark, an underground connection will allow people to move without disturbing the untouched panoramas of Bøkkerfjellet. To mark the entrance to

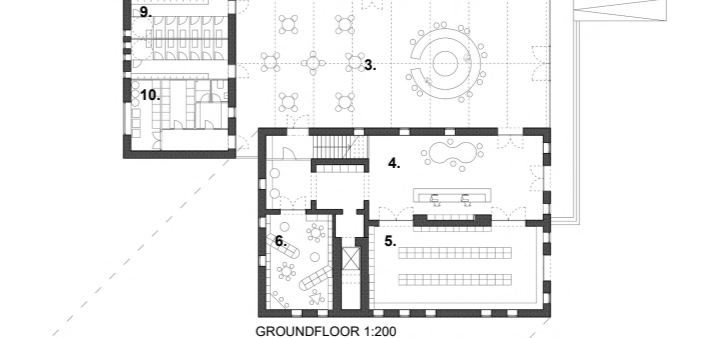
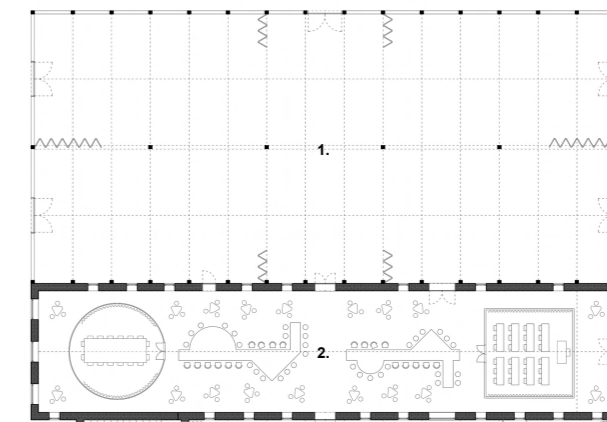
this underground passage, a small pavilion designed to resemble a rock formation will be constructed.

Moreover, the plans include extending the park towards the city center by planting more trees and increasing the available green spaces. This expansion aims to enhance the natural beauty of the park while also taking measures to protect the biodiversity of its flora and fauna.

By implementing these measures, Bøkkerfjellet Park will be safeguarded for future generations to cherish, ensuring that its ecological balance and natural splendor remain intact.



A COMMUNITY CENTER TO ACTIVATE THE NEW WATERFRONT

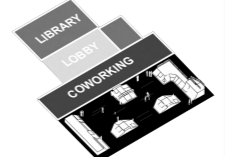


- INDEX
- 1. INDOOR PLAZA
 - 2. CO-WORKING
 - 3. LOBBY
 - 4. LIBRARY - ENTRANCE
 - 5. LIBRARY - ROOMS
 - 6. LIBRARY - KID ROOMS
 - 7. LIBRARY - MULTIMEDIA ROOM
 - 8. LIBRARY - OFFICE
 - 9. WC
 - 10. STORAGE

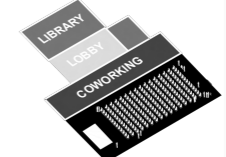
OPT 1. FOOD MARKET



OPT 2. SKATE PARK



OPT 3. OUTDOOR EVENT



The centerpiece of Larvik harbour's transformation will be the establishment of a community center within the historic Toldboden, the old customs house built in 1888, which holds significant importance as an original port landmark. During the conversion process, great care will be taken to preserve the building's historical significance

while seamlessly integrating modern elements to enhance its functionality and appeal. By adding new light structures and covering the courtyard, the building's volumetric expansion on the northern side will create additional spaces and maximize usable surface.

The goal is to achieve a harmonious balance between the old and new identities of the harbour, ensuring they complement each other rather than conflicting. This approach will extend to the outdoor spaces, with the reopening of the historical Fiskebryggen and the completion of the waterfront park. Along the coast, various leisure, greenery, and recreational areas

will be developed to attract people to appreciate the scenic beauty and partake in outdoor activities. By skillfully conserving and modernizing both the historic building and the surrounding outdoor spaces, Larvik harbour will be transformed into a vibrant and welcoming community hub.

COMMUNITY (AS) CENTER

The lack of a strong connection between Larvik's city center and waterfront is both physical and mental, due to few public buildings present along the sea, creating a sense of distance from the community. To address this, the Toldboden building presents an excellent opportunity to catalyze people and activities in the area.

Transforming the old customs house into a new community center will serve as a focal point to draw the people of Larvik closer to the waterfront. By renovating and expanding the building, it can accommodate a diverse range of functions such as a library, co-working spaces, and multifunctional areas. These amenities will not only bring the community together but also play a vital role in defining the future identity of the harbour area.

The physical disconnection between the city and the harbour is partially attributed to the current railway's position, which may undergo changes if a new intercity line will be established closer to the center. Instead of viewing this as a problematic issue, it can be seen as an infrastructural challenge that could be overcome with thoughtful planning.

The option of creating an underground passage linking the upper and lower parts of the city emerges as a potential solution. Such a passage not only resolves the disconnection but also offers an exciting opportunity to rediscover Larvik's geological richness, turning it into a significant new attraction for residents and visitors.



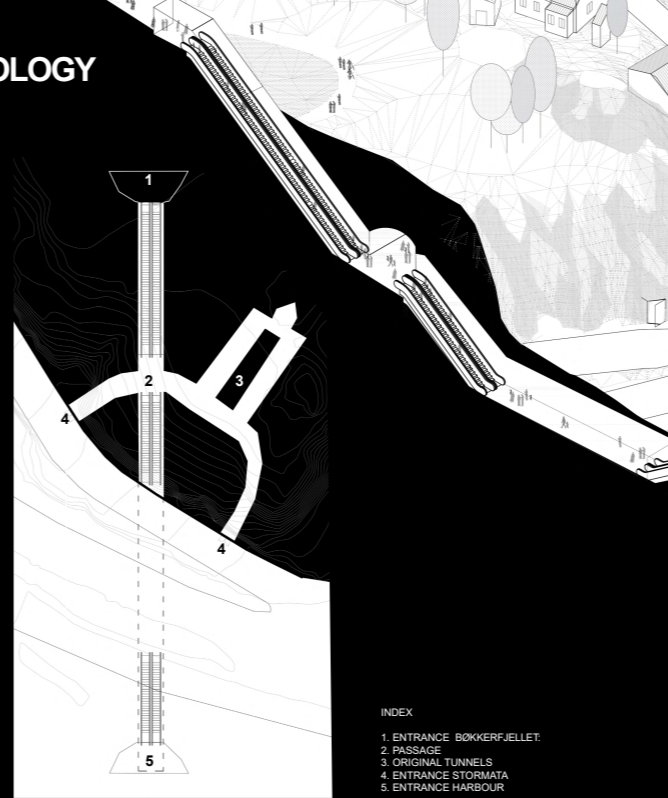
2023 COMMUNITY FOR LARVIK URBAN PLANNING

CONNECTING THE CITY BY DISCOVERING ITS GEOLOGY

The plan to create an underground connection between the upper and lower town of Larvik, presents an excellent opportunity to showcase the city's geology to everybody. Larvik's wide recognition as the sole location of this type of monolithic rock makes it a remarkable feature worth celebrating and sharing with the public.

The underground passage, beyond being a functional link, will transform into an attraction in itself: a captivating open-air museum integrated into everyday life transitional spaces. This design approach allows people to experience and learn about Larvik's geology in a dynamic and engaging manner.

By linking the underground passage to the existing tunnels in Bøkkerfjellet, there is an opportunity to create a network of connections and access points throughout the area. Utilizing the old bomb shelters as food storage or a minimarket is a smart way to repurpose existing structures and make the most of the limited available space in Larvik, considering the geographical constraints on expansion. Moreover, the excavated rock and terrain will be ingeniously repurposed in the design of the new park along the harbour to embrace a circular and sustainable practice, reducing waste and maintaining a harmonious relationship with the environment.



1920 COMMITTEE FOR LARVIK PORT AND RAILWAY URBAN PLANNING

