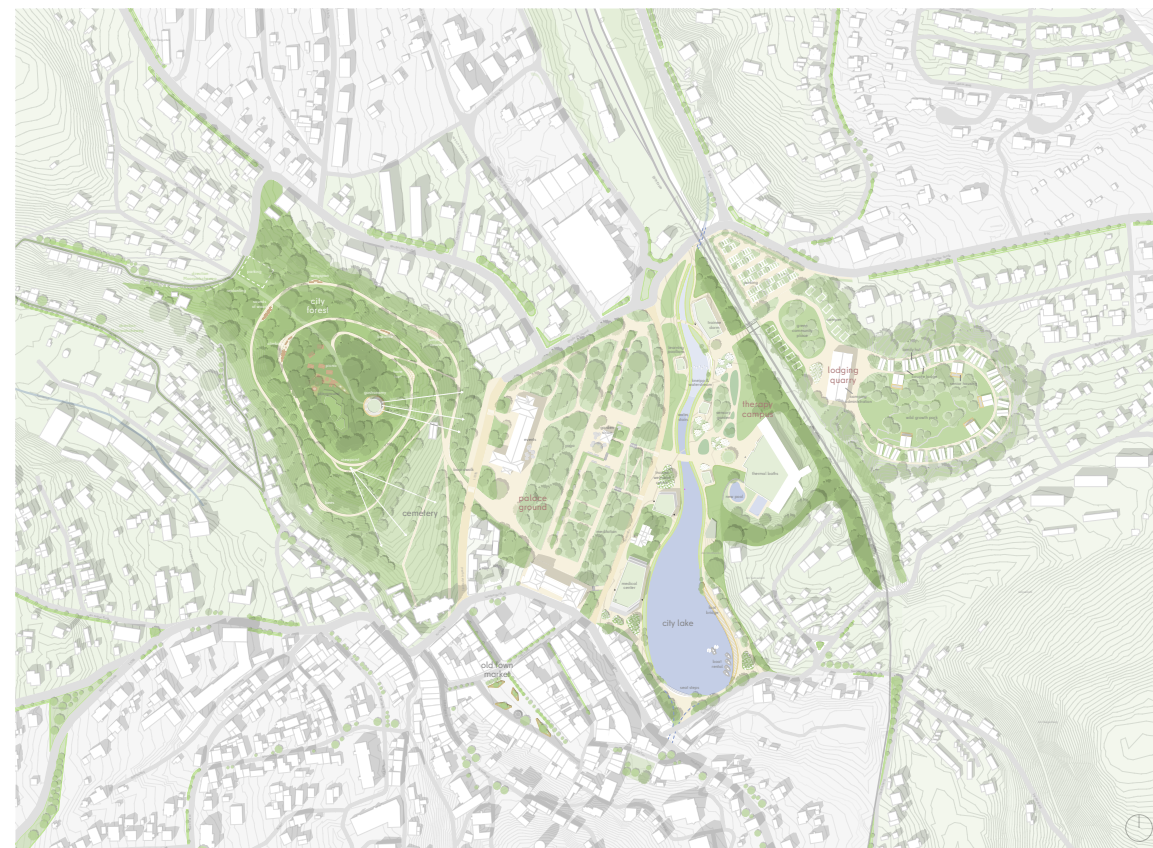


# THE GREEN HEART

# THE GREEN HEART

# THE GREEN HEART



FRAMEWORK PLAN 1:2500



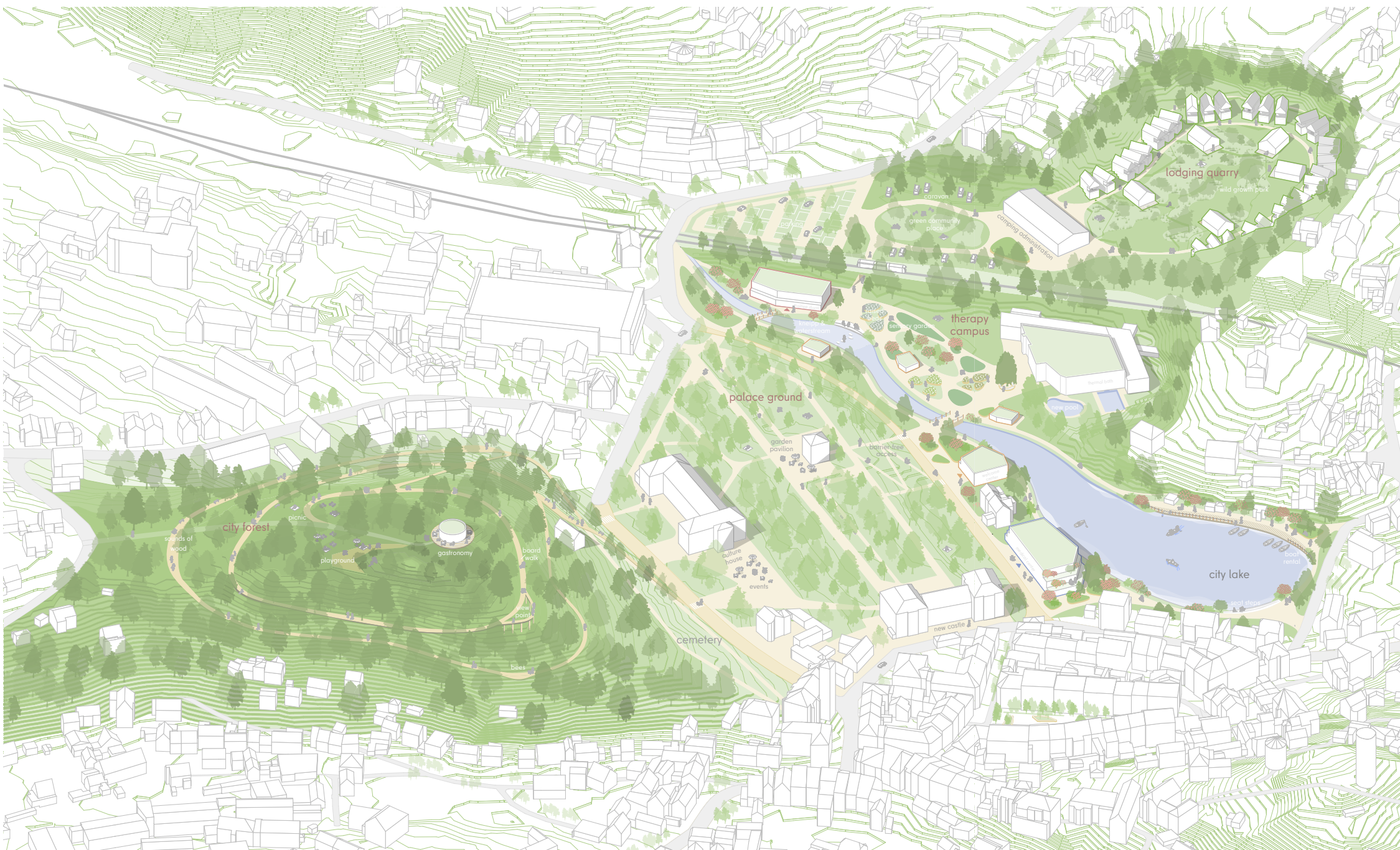
SITE PLAN CITY FOREST 1:1000



SITE PLAN SENSORY GARDEN 1:1000



SITE PLAN LODGES 1:1000



ISOMETRIC DESIGN PLAN 1:1000



GREEN VEINS 1:20,000

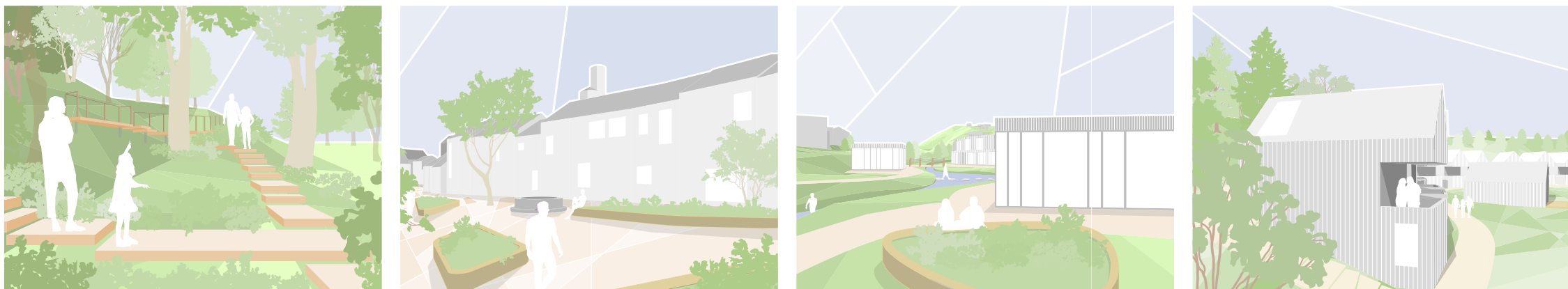
The conceptual guiding idea describes a reactivation and expansion of inner-city natural potentials in order to develop a health-promoting, healing urban landscape. Special attention is given to the establishment of a new medical center and therapy campus, easily accessible and appealing, which will make Bad Lobenstein a radiant destination for health tourists. Young people will also be invited to the town by the newly created lodging and employment opportunities in the medical sector, and they will be happy to stay for the long term because of the high quality of life. In order to generate the design area required for such a project, follow land is reinterpreted and unnecessary traffic routes as well as sealed areas are reduced. The resulting differential areas offer space for various activation possibilities. Thus, the Green Veins concept envisions the reworking of these spaces through greening, planning, and revitalization. The result is a network of revitalized squares, green islands and planted streets. These green veins will eventually open up the entire city center and form a guiding path that connects to prominent access roads and hiking trails in the surrounding area of Bad Lobenstein. In this way, visiting people are welcomed and seen off with green arms. A newly conceived hierarchy system of the traffic network and a precise mobility concept lead to further inner-city restructuring. Parking spaces will be relocated at important positions in the city, paths will be narrowed to a suitable minimum, inner-city speeds will be decelerated, and a large number of streets will be made possible or accessible only to residents. The totality of these measures represents the foundation for achieving a Green Heart.

**Neapolice** In the center of the city, there are already individual areas with different identities that need to be intensified. In addition to the spa park, which is strongly cultivated and also occupies a fixed, creative place in the current Bad Lobenstein, the former fairground area, the open space in front of the Thermal Bath and the former quarry in particular represent enormous development opportunities for the future of the town. To seize these opportunities, it is necessary to develop a new use for the fairground elevation, restructure the ill-used spa park, restructure the open space in front of the thermal baths, and relocate the existing building materials business at the quarry. These four primary development areas form the metaphorical heart chambers of the design: City Forest, Palace Ground, Therapy Campus & Lodging Quarry.

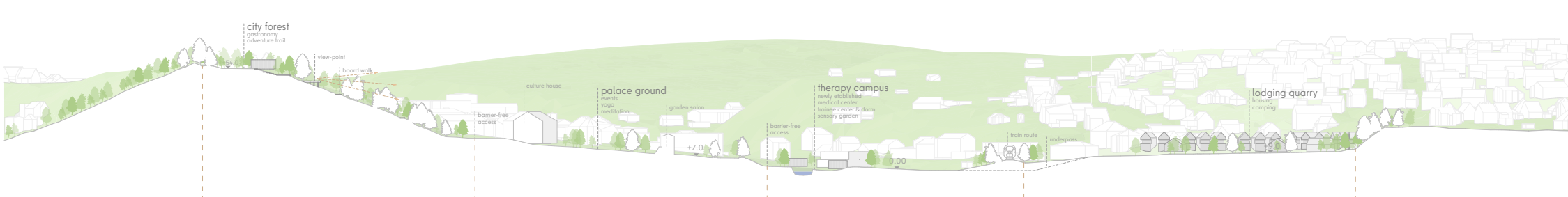
**City Forest** On the heavily wooded hill of the former fairground, a city forest is being created, which, in parts barrier-free, will feature an adventure trail and thus offer young families and active seniors the opportunity to experience nature. Stations of a playful and informative nature guide visitors to the hills, where resting places and gastronomy are located and provide an impressive view.

**Palace Ground** The existing spa park will be optimized as a place for cultivated leisure activities through minimal adjustments. For example, meadow areas will be used as meditation and sports areas for free use, while the disused salon will be reworked as a site for several days in a row. Furthermore, a new ramp will be built to provide barrier-free access. The existing art and event program will be complemented by the involvement of local clubs, which will be supported with funding in return. In this way the new center for sports and culture in Bad Lobenstein will be created.

**Lodging Quarry** After the relocation of the local trade to the decentralized industrial area, the conversion to a community hub for visitors of the new heart of Bad Lobenstein takes place. Characterized by a steep slope, a down-to-earth housing possibility for a stay of several days is created in the disused quarry. The culture of the lodges evokes associations of rustic wooden huts. By varying the floor plan structure and the number of floors, different age groups and different numbers of people are offered comfortable overnight accommodations.



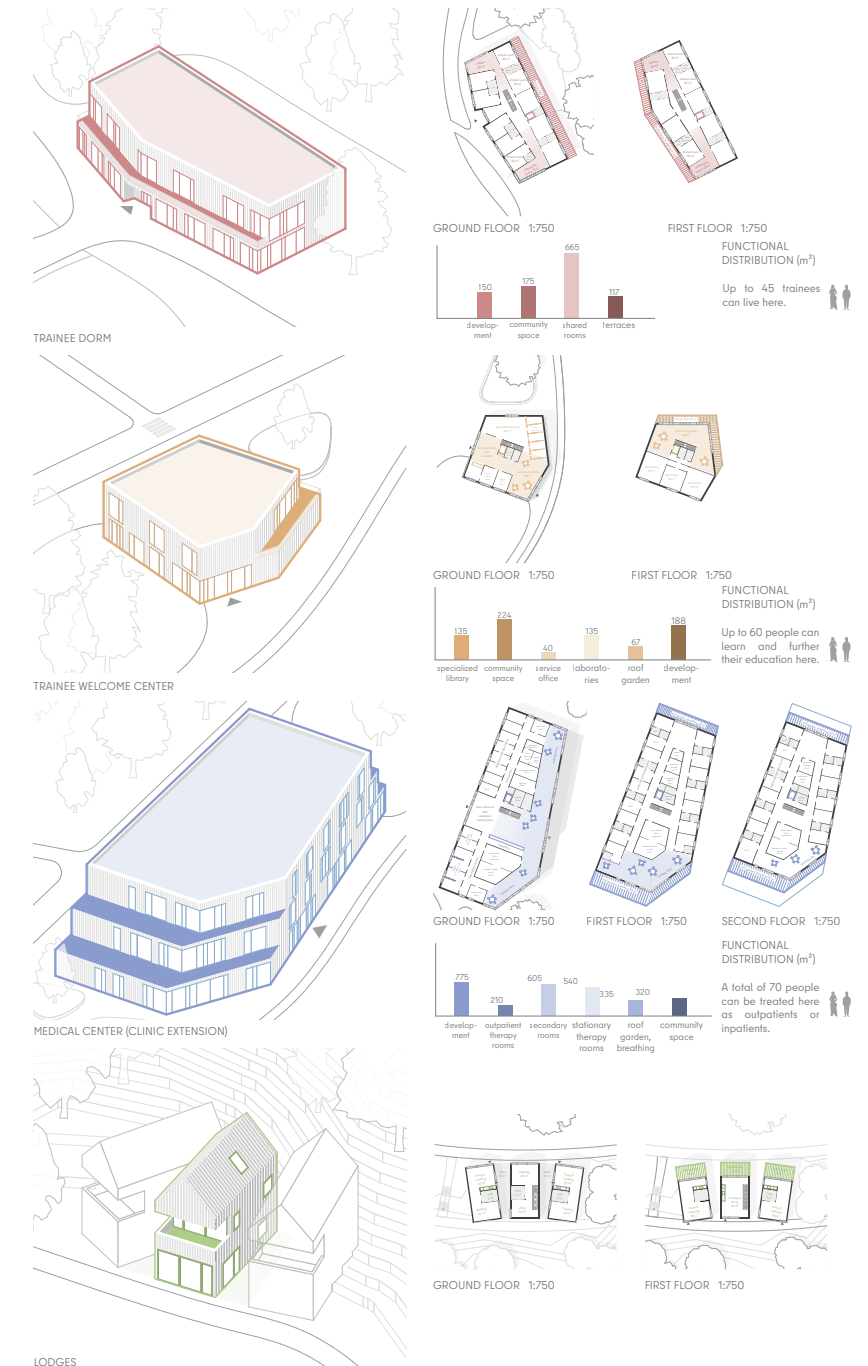
SECTION THROUGH THE AREA 1:1000



SECTION THROUGH THE AREA 1:1000



THE NEWLY ESTABLISHED THERAPY CAMPUS



FUNCTIONAL DISTRIBUTION (m²)

**TRAINEE DORM**  
 150 m² shared meals, 125 m² community space, 665 m² shared rooms, 100 m² terrace  
 Up to 45 trainees can live here.

**TRAINEE WELCOME CENTER**  
 135 m² secondary library, 225 m² community space, 65 m² service office, 135 m² laboratory area, 67 m² roof garden, 358 m² developer meet  
 Up to 60 people can learn and further their education here.

**MEDICAL CENTER (CLINIC EXTENSION)**  
 775 m² shared meals, 210 m² therapy space, 605 m² secondary rooms, 540 m² stationary therapy rooms, 135 m² garden, 300 m² community space  
 A total of 70 people can be treated here as outpatients or inpatients.

**LODGES**  
 700 m² shared meals, 210 m² therapy space, 605 m² secondary rooms, 540 m² stationary therapy rooms, 135 m² garden, 300 m² community space

**MILESTONES ON THE WAY TO A GREEN BAD LOBENSTEIN**  
**STARTING POINT**  
**STEP 01** **Reactivation & Intensification**  
 The natural cultivation of sealed areas and the reworking of existing potential forms the basis of future-oriented, green urban development.  
**STEP 02** **Establishment of therapy landscape**  
 By building a cultivated natural landscape, Bad Lobenstein can maintain its status as a health resort in the future. The establishment of a Kneipp waterstream through the widening of the Lemnitz, as well as the improvement of the air quality through new greening, guarantees the long-term recognition as a recreational area.  
**STEP 03** **Architectural restoration**  
 Existing structures are being renovated, while character-defining new buildings create space for both a modern therapy campus and a unique lodging facility in the old quarry, said therapy campus is composed of an informative welcome building, a new medical center and kitchen sites while the lodges cater to different demographics through variation in culture and space.  
**STEP 04** **Long-term management**  
 Event programs by community benefit organizations, plant maintenance by volunteer clubs, and civic cultural offerings ensure positive, long-term urban development.

**CYCLE DIAGRAM OF TOWN, MOOR AND THERMAL WATER**  
 Due to the prospect of legislation prohibiting the extraction of natural peatlands until probably 2040 (National Decadal Protection Strategy), the strengthening of other production criteria becomes Bad Lobenstein's main concern. A strategy centered on air quality, thermal treatments and Kneipp in combination with large-scale restoration promises to give the town a new lease of life. Through the planned revitalization of the moor and the city center, coupled with an identity-creating marketing concept focused on a green, healthy future, Bad Lobenstein is experiencing an increase in popularity in both leisure and health tourism. The favorable location of the city, in the midst of popular hiking and excursion destinations in Central Thuringia, is also a contributing factor. With the funds acquired in this way and possible government grants, the construction of a new health center in the form of the therapy campus becomes a tangible possibility. Such a development leads to the repositioning of an attractive health center, which offers work and training places and in this way a young to middle-aged demographic.

FUNCTIONAL DISTRIBUTION (m²)