



Nyköping Skavsta (SE)

### Office block

The proposed office block typology features external facades for the buildings, which are designed with healthy in mind and wood as the building material. The buildings have a width of 23.5 meters and a structural grid of 6.5 meters.



The block has a spacious central courtyard featuring greenery that offers pleasant views, ample changing, and recreational and ecological qualities.

### Existing nature

The existing natural environment on the site exhibits a range of diverse qualities. Presenting as an interconnected network of green spaces that provide a framework for the city's development.

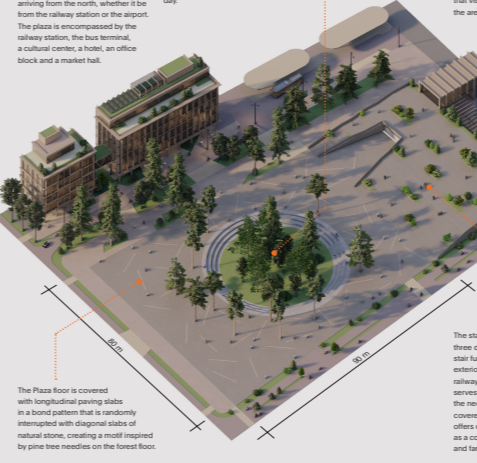


### Forest Park / Skogsparken

The Forest Park is situated at the heart of Skavsta Forest City, serving as a central hub for the proposed green-blue structure. The park is designed around a pine woodland rocky hill, which is the highest natural point of the site, with an elevation approximately seven meters above the surrounding terrain.



The Forest Park is situated at the heart of Skavsta Forest City, serving as a central hub for the proposed green-blue structure. The park is designed around a pine woodland rocky hill, which is the highest natural point of the site, with an elevation approximately seven meters above the surrounding terrain.



The buildings surrounding the plaza, with their public spaces, open ground floors, and terraces, collectively create a vibrant plaza that remains lively throughout the winter days.



The station building consists of three dimensions: firstly, the main structure facing the railway line, which serves as a meeting place and a playground for children; secondly, the station building, which serves as a meeting place and a playground for children; and thirdly, the station building, which serves as a meeting place and a playground for children.



# skavsta forest city



### Existing nature

The existing natural environment on the site exhibits a range of diverse qualities. Presenting as an interconnected network of green spaces that provide a framework for the city's development.

### Forest Boulevard / Skogsboulevarden

The Forest Boulevard, spanning nearly 700 meters in length and 25 meters in width, stretches across the area from north to south. It is a hybrid between a street and a strip of forest, combining urbanity with nature from side-to-side in the boulevard, with zones, each with a width of five meters and serving a specific purpose.

### Forest strips

The forest strips feature a series of horizontal green-blue strips, which serve as a framework for the project. The strips are designed to align with the urban grid and provide a visual connection between the buildings and the surrounding landscape.

### Industrial block

The industrial block typology is flexible to accommodate different functions such as workshops, warehouses, greenhouses or office buildings. The main construction material is wood and it includes a central courtyard with greenery, serving as a shared space for logistics and recreation among the users.

### Living in the forest

Besides becoming an attraction for visitors from all over the world, this area will primarily become a future workplace for more than 10,000 persons. To ensure a living city in an area which cannot hold residential buildings due to the proximity of the airport, the proposal builds on a strategy, disposition and architectural solutions for public and semi-public spaces, attractors and services that allow for and promote social interaction and life throughout the whole day.

### Primary green layer

The primary green layer is a network of green-blue strips, which serve as a framework for the project. The strips are designed to align with the urban grid and provide a visual connection between the buildings and the surrounding landscape.

### Industrial block

The industrial block typology is flexible to accommodate different functions such as workshops, warehouses, greenhouses or office buildings. The main construction material is wood and it includes a central courtyard with greenery, serving as a shared space for logistics and recreation among the users.

### Structural plan 1:5000

The structural plan shows the layout of the buildings and green spaces. It includes a legend for the different types of buildings and green spaces.

### Proposal

Skavsta Forest City is a multilayered city where nature and urbanity meet and merge into a vibrant and sustainable mix of wildlands, attractions, and businesses. The living and productive city is thoughtfully designed to accommodate everyone, including workers, visitors, locals, children, commuters, travelers, tourists and wildlife.

### Primary green layer

The primary green layer is a network of green-blue strips, which serve as a framework for the project. The strips are designed to align with the urban grid and provide a visual connection between the buildings and the surrounding landscape.

### Forest Boulevard / Skogsboulevarden

The Forest Boulevard, spanning nearly 700 meters in length and 25 meters in width, stretches across the area from north to south. It is a hybrid between a street and a strip of forest, combining urbanity with nature from side-to-side in the boulevard, with zones, each with a width of five meters and serving a specific purpose.

### Forest strips

The forest strips feature a series of horizontal green-blue strips, which serve as a framework for the project. The strips are designed to align with the urban grid and provide a visual connection between the buildings and the surrounding landscape.

### Industrial block

The industrial block typology is flexible to accommodate different functions such as workshops, warehouses, greenhouses or office buildings. The main construction material is wood and it includes a central courtyard with greenery, serving as a shared space for logistics and recreation among the users.

### Structural plan 1:5000

The structural plan shows the layout of the buildings and green spaces. It includes a legend for the different types of buildings and green spaces.

### Living in the forest

Besides becoming an attraction for visitors from all over the world, this area will primarily become a future workplace for more than 10,000 persons. To ensure a living city in an area which cannot hold residential buildings due to the proximity of the airport, the proposal builds on a strategy, disposition and architectural solutions for public and semi-public spaces, attractors and services that allow for and promote social interaction and life throughout the whole day.

### Primary green layer

The primary green layer is a network of green-blue strips, which serve as a framework for the project. The strips are designed to align with the urban grid and provide a visual connection between the buildings and the surrounding landscape.

### Forest Boulevard / Skogsboulevarden

The Forest Boulevard, spanning nearly 700 meters in length and 25 meters in width, stretches across the area from north to south. It is a hybrid between a street and a strip of forest, combining urbanity with nature from side-to-side in the boulevard, with zones, each with a width of five meters and serving a specific purpose.

### Forest strips

The forest strips feature a series of horizontal green-blue strips, which serve as a framework for the project. The strips are designed to align with the urban grid and provide a visual connection between the buildings and the surrounding landscape.

### Industrial block

The industrial block typology is flexible to accommodate different functions such as workshops, warehouses, greenhouses or office buildings. The main construction material is wood and it includes a central courtyard with greenery, serving as a shared space for logistics and recreation among the users.