

# Revitalizing Grünau \\\ Europen E 17 \\\ 1

A SUSTAINABLE FUTURE FOR GRÜNAU NORD

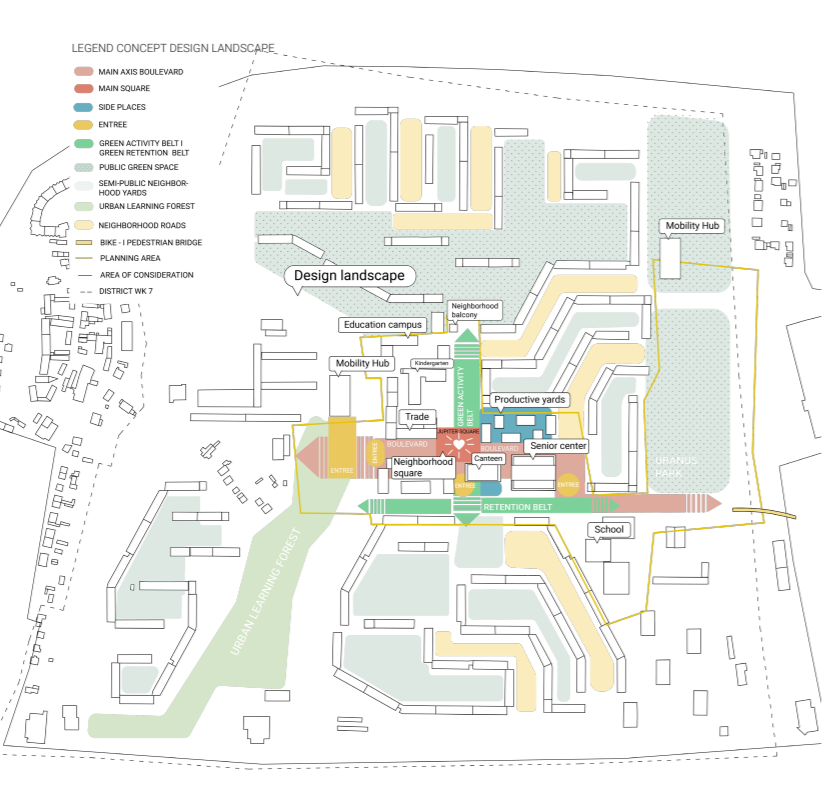
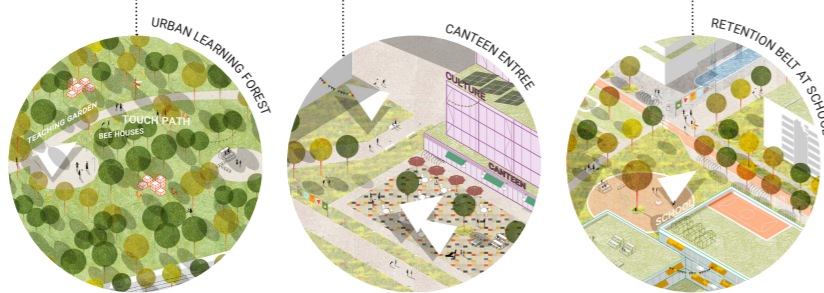
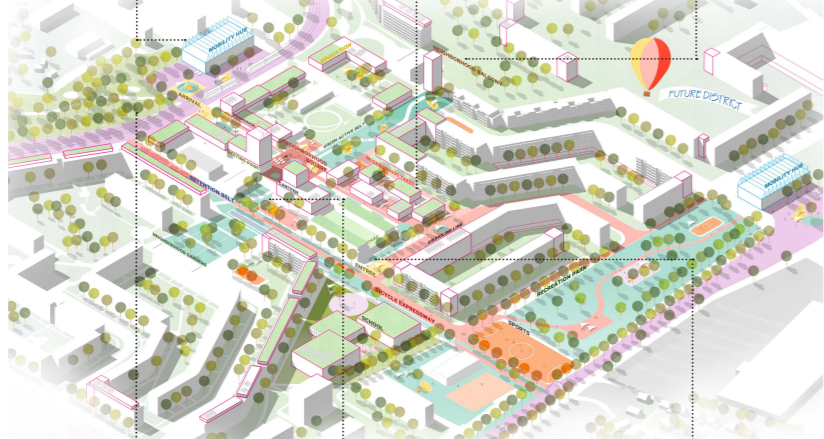
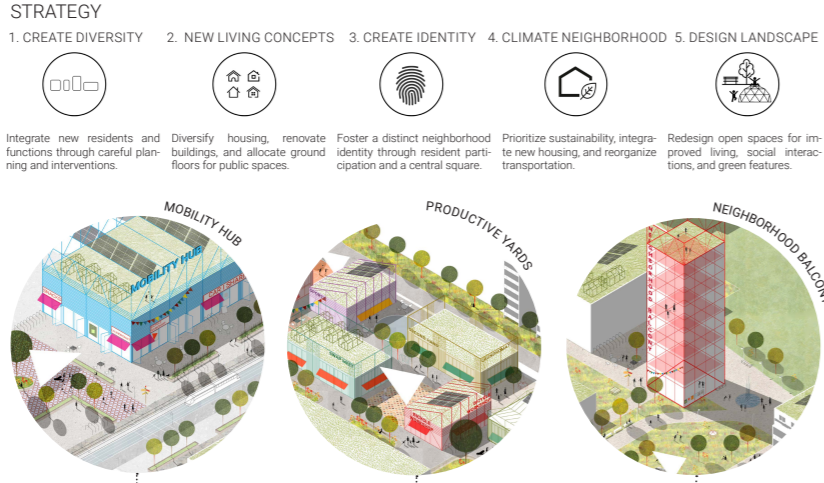
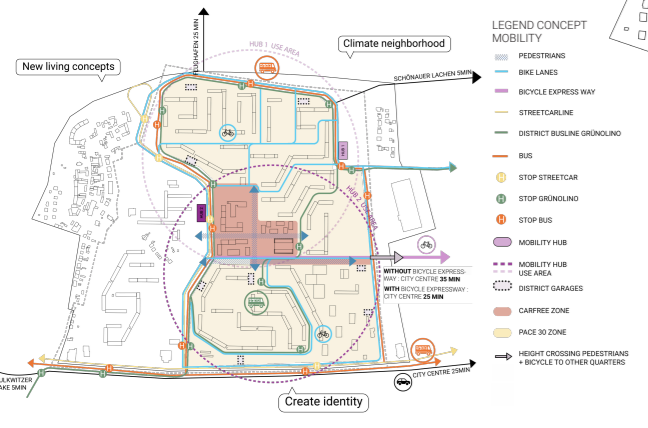


**CONCEPT**  
Leipzig-Grünau, a large prefabricated housing estate from the former GDR, was built between 1976 and 1986 based on socialist principles. Today Residential Complex 7 in Grünau lacks housing diversity and versatile uses, requiring urgent renovation. A strategic approach aims to address these issues and revitalize the area.

The urban planning strategy for the transformation of Grünau's Residential Complex 7 encompasses four intervention areas. The first area is Restructuring and Conversion. The main square, Jupiterplatz, will undergo a significant transformation into a vibrant neighborhood center. The plan involves renovating and expanding existing structures, preserving the former library and Konsum building while introducing new urban blocks. This will replace the previous spatial separation of functions and promote mixed-use spaces.

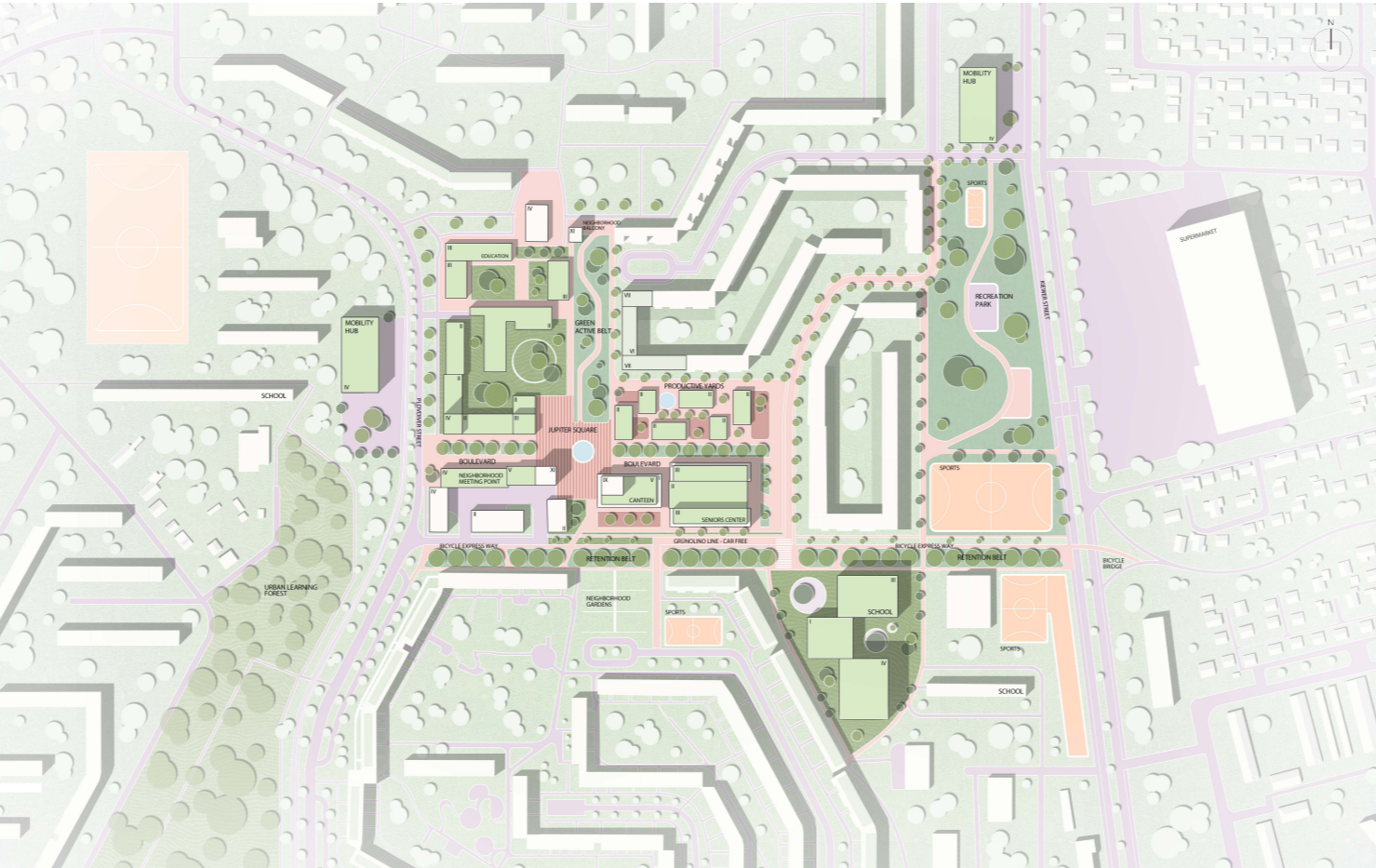


FIGURE-GROUND DIAGRAM 1.10.000

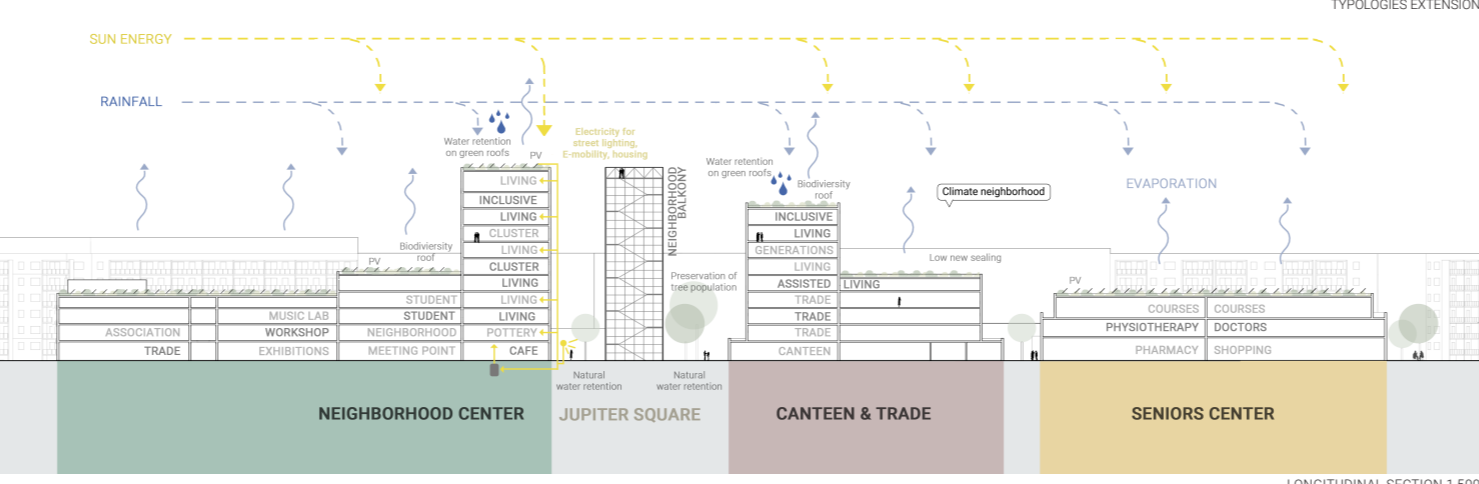
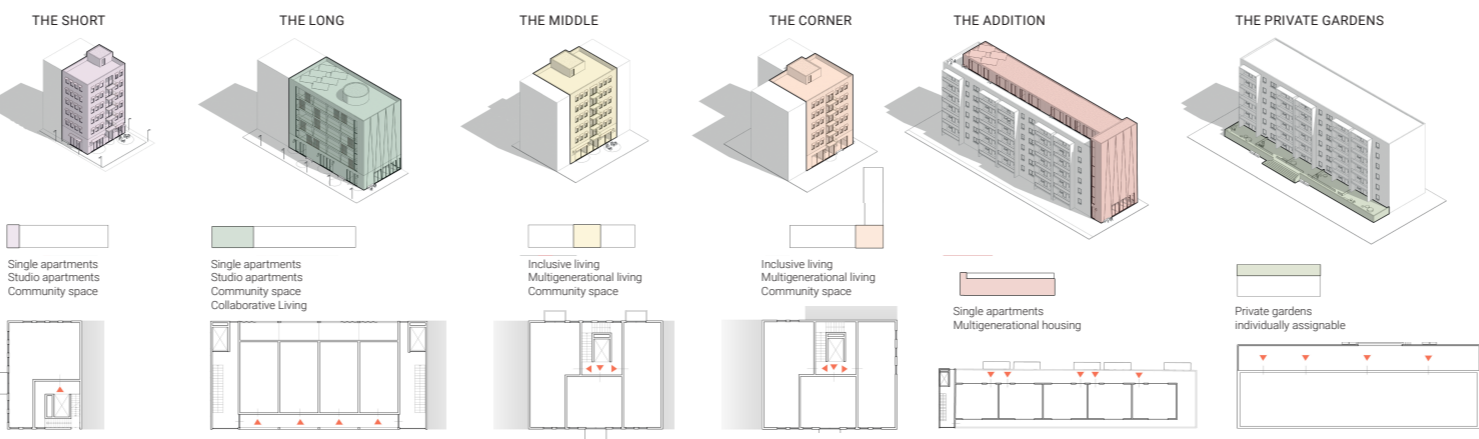


# Revitalizing Grünau \\\ Europen E 17 \\\ 2

A SUSTAINABLE FUTURE FOR GRÜNAU NORD



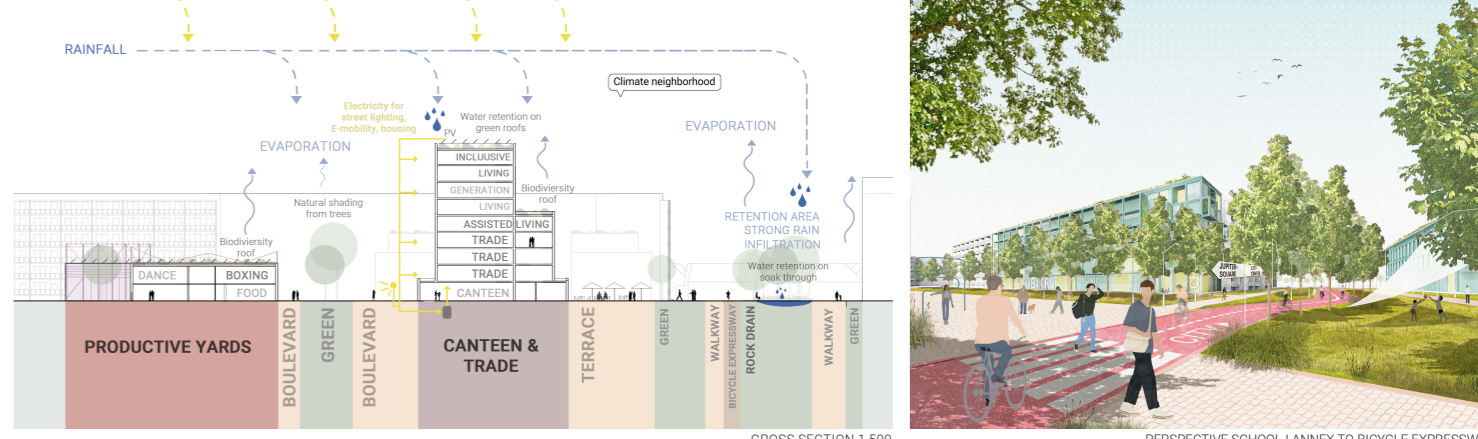
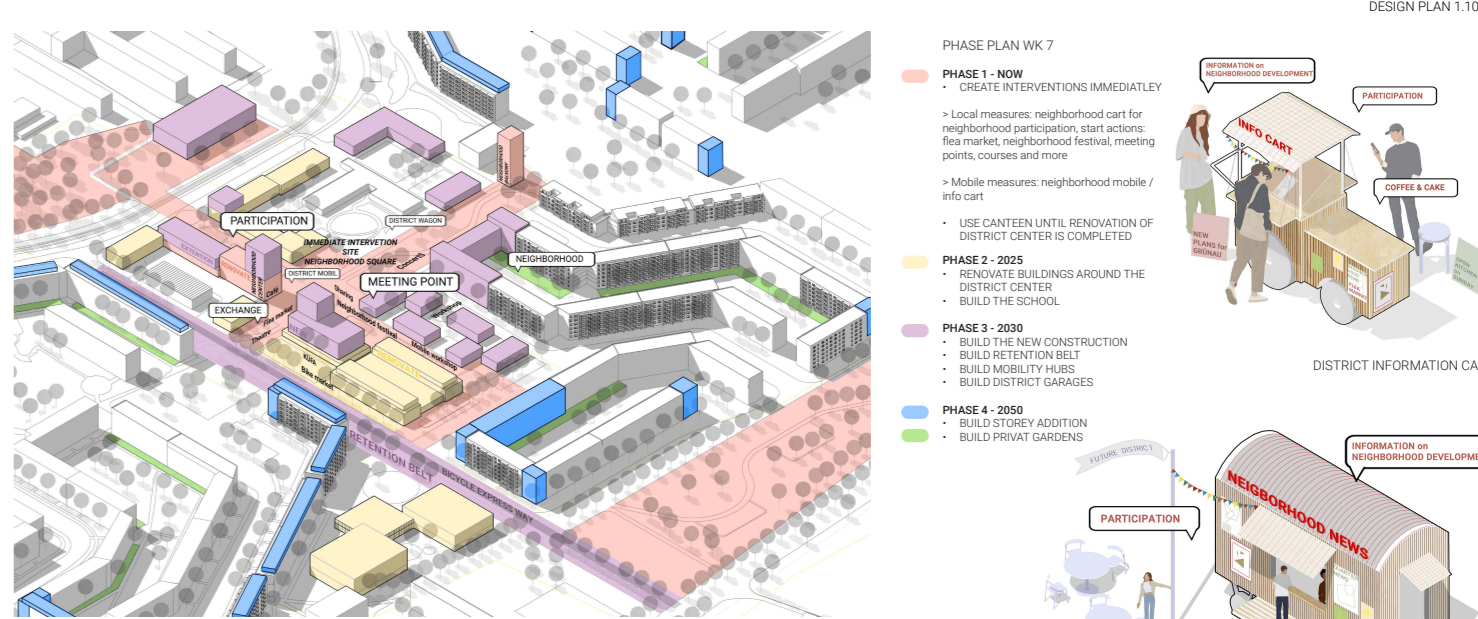
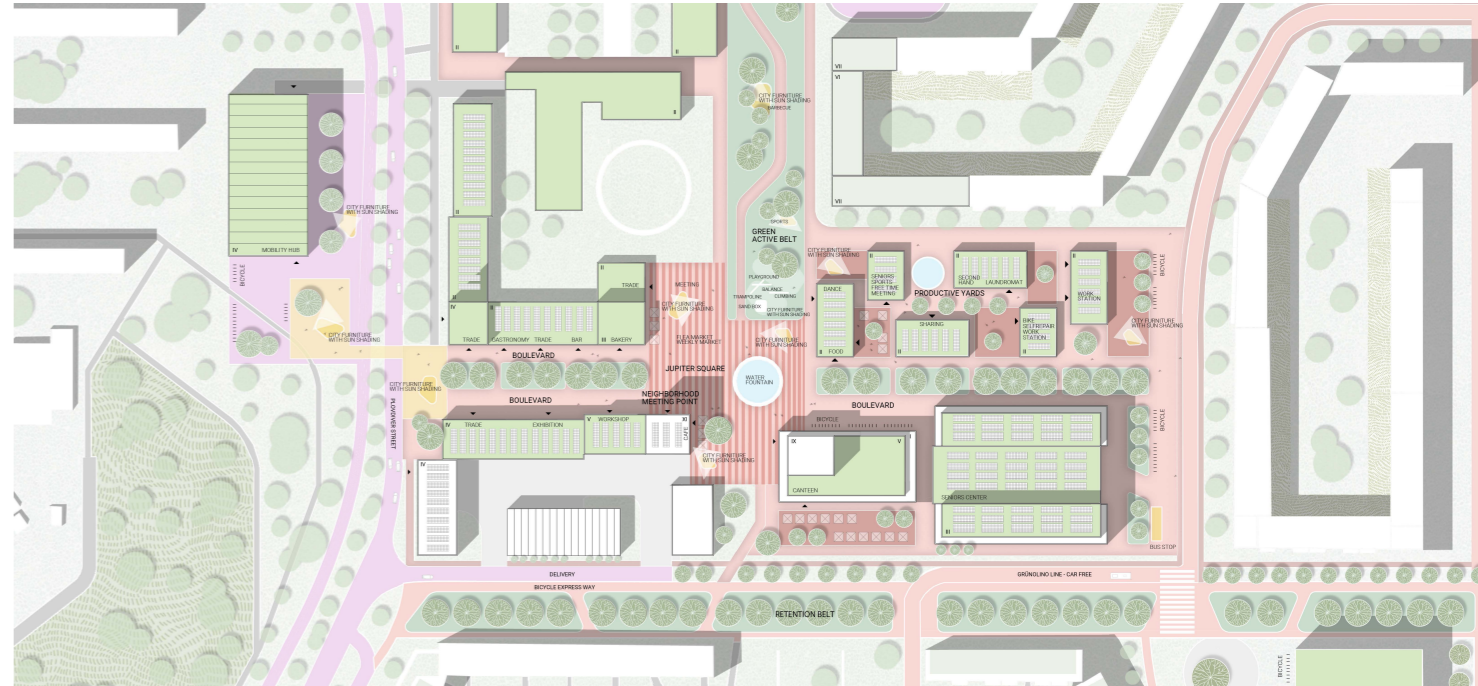
**OPEN SPACES**  
The design of Residential Complex 7 Grünau revolves around four types of open spaces:  
Private Green - Residential Gardens & Courtyards: These areas prioritize resident privacy and relaxation, featuring individually designed gardens and communal courtyards that encourage neighborly interactions.  
Public Green - Parks and Green Areas: Designed as meeting points for the community, these spaces offer opportunities for social interactions, play, and relaxation. They include playgrounds, seating areas, and team sports facilities.  
Active Green - Sports and Exercise Areas: Providing spaces for physical activity, such as sports fields, running paths, and outdoor fitness equipment, to promote an active and healthy lifestyle.  
Urban Green - Town Squares and Promenades: These vibrant public spaces, adorned with benches, greenery, and art installations, foster social life and community gatherings.



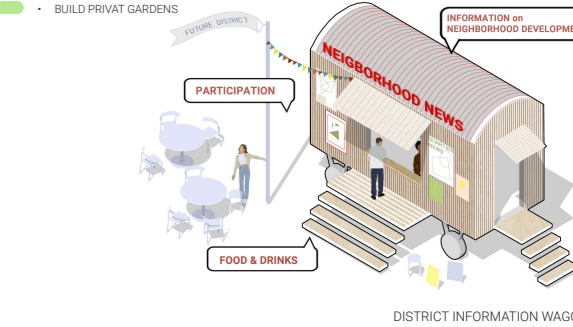
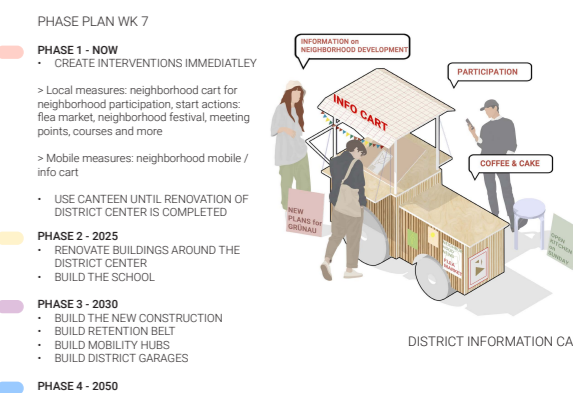
LONGITUDINAL SECTION 1.500

# Revitalizing Grünau \\\ Europen E 17 \\\ 3

A SUSTAINABLE FUTURE FOR GRÜNAU NORD



CROSS SECTION 1.500



PERSPECTIVE SCHOOL I ANXEN TO BICYCLE EXPRESSWAY