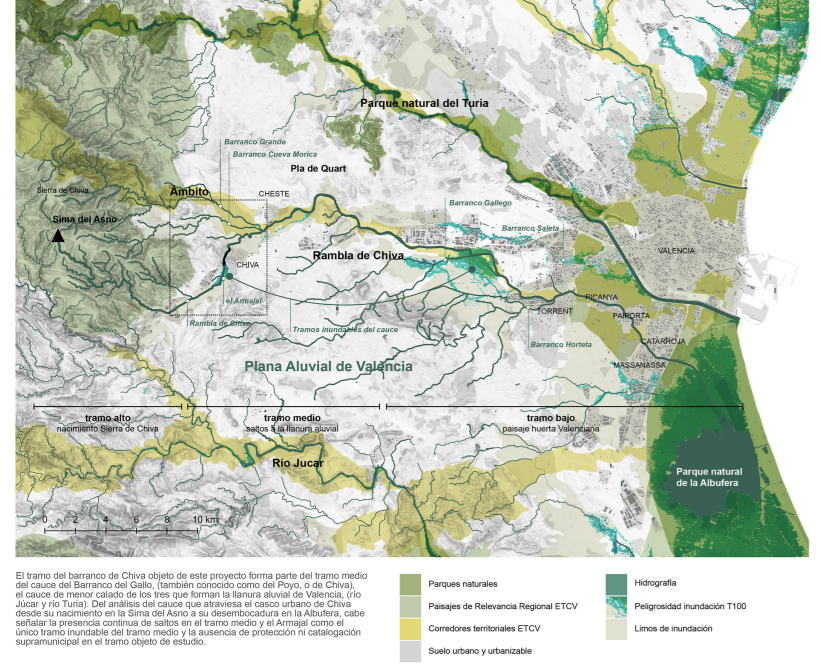


Chiva (ES) khams nazarat el barranco as commons

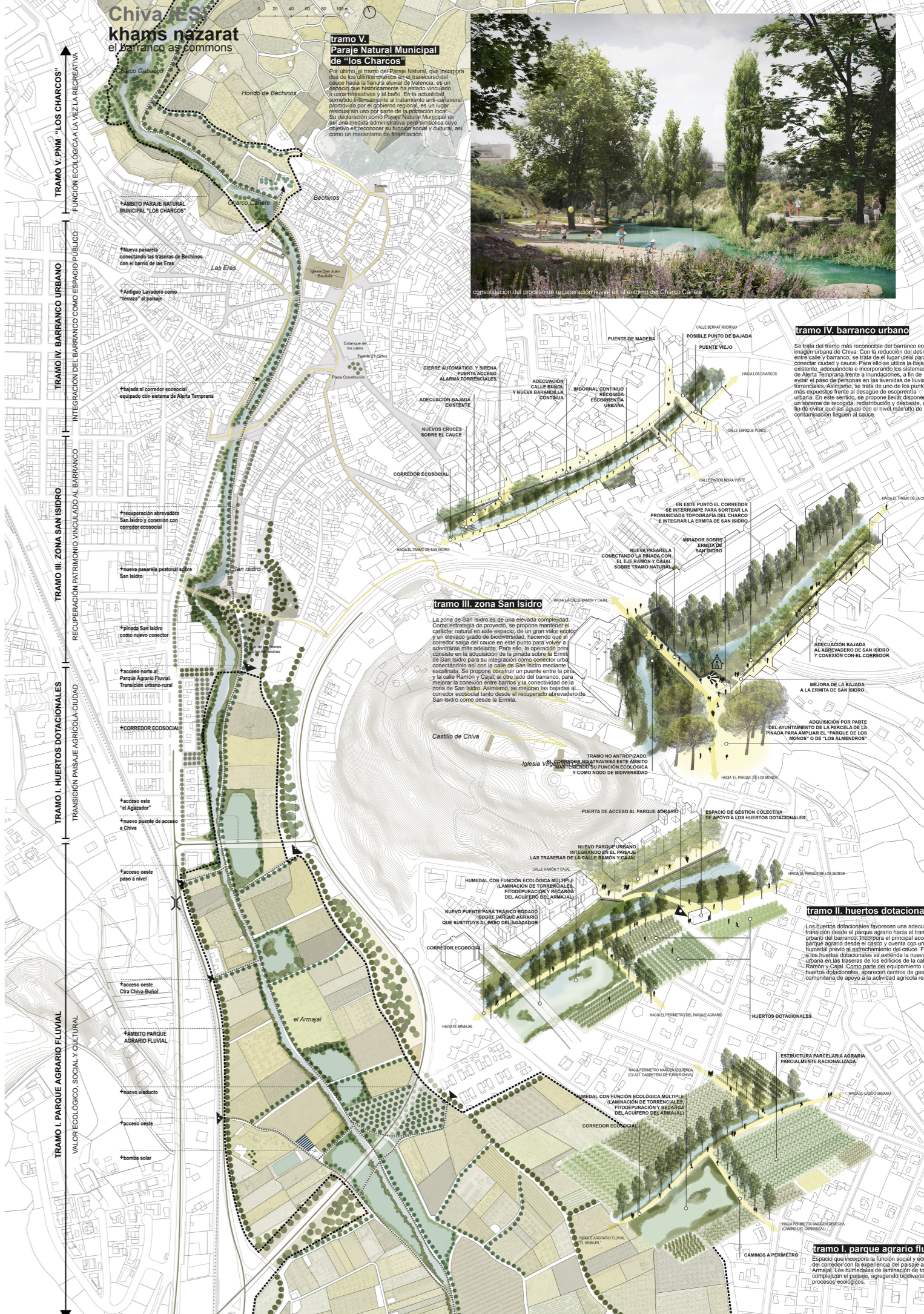
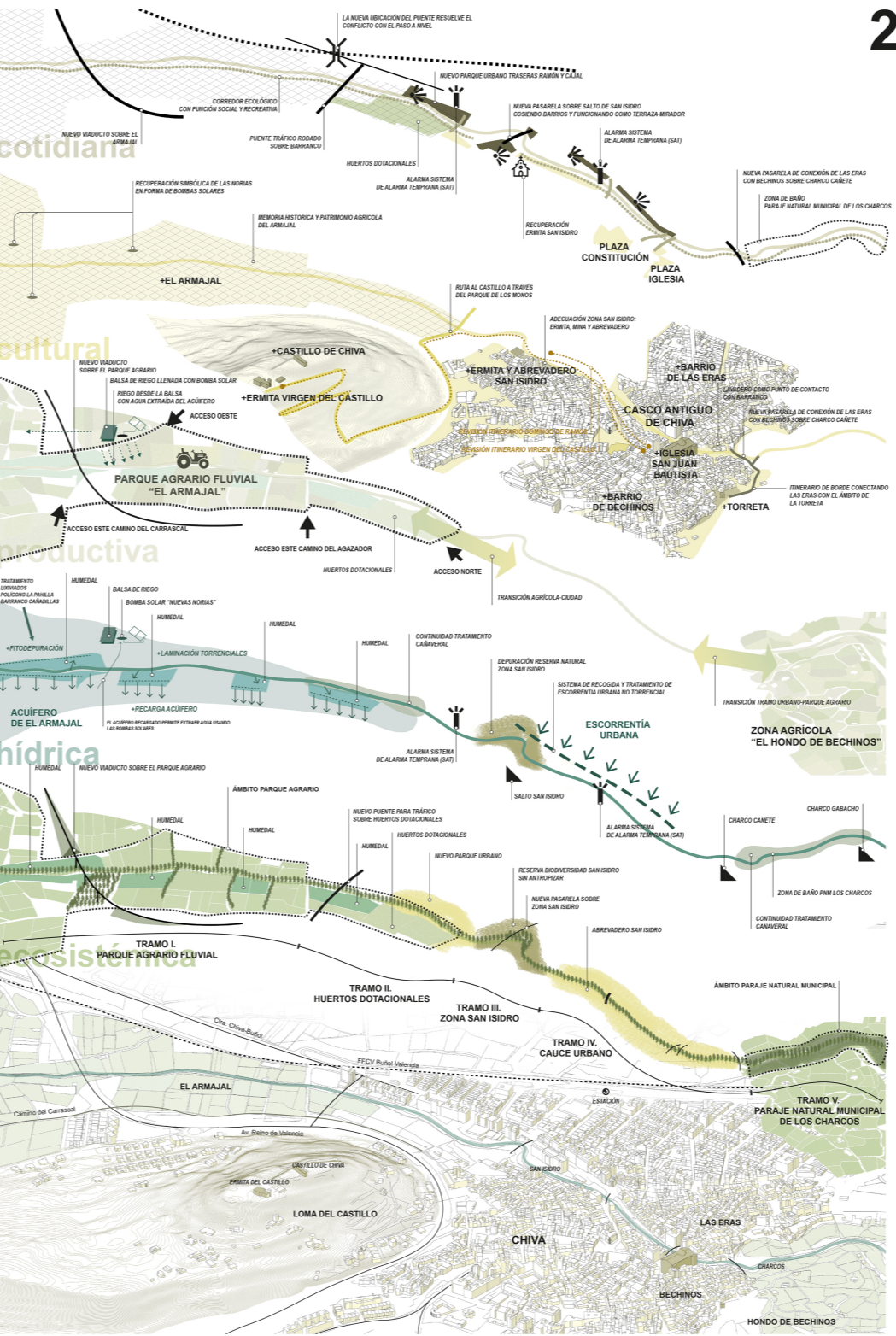
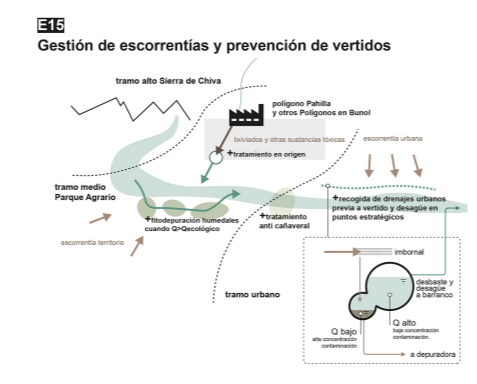
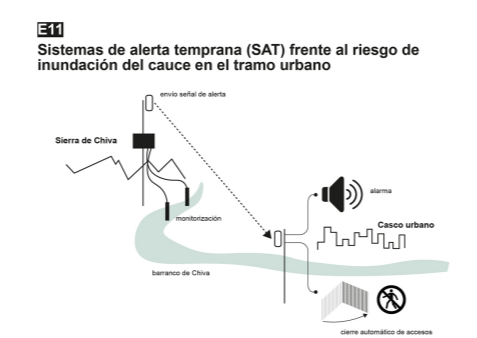
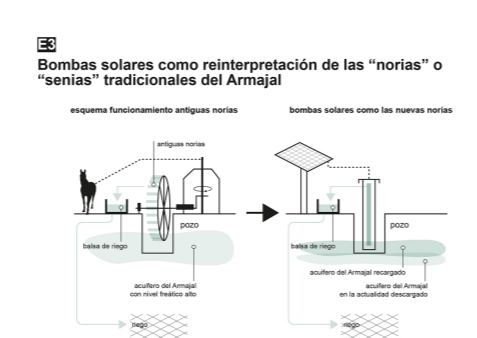
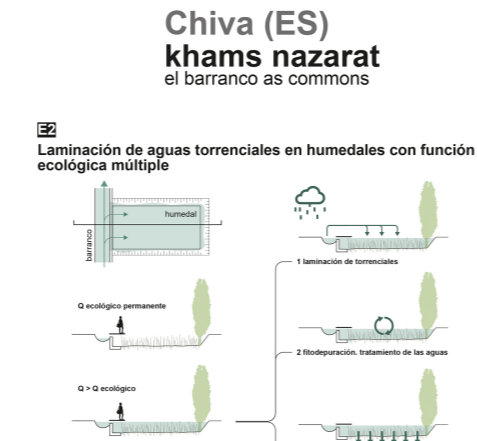
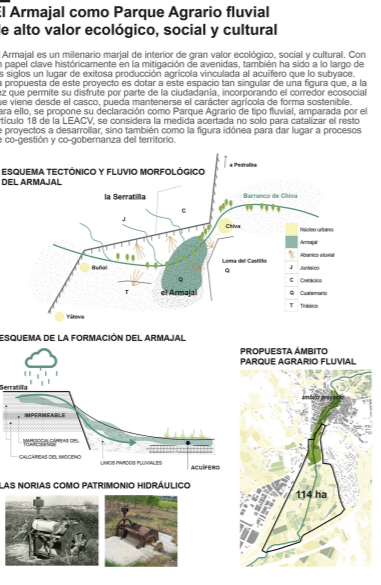
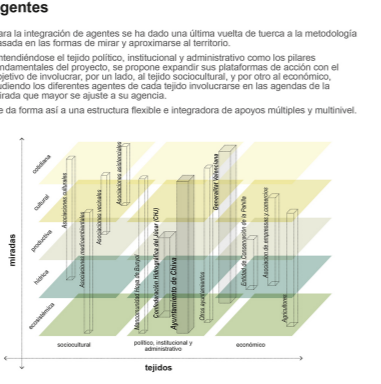
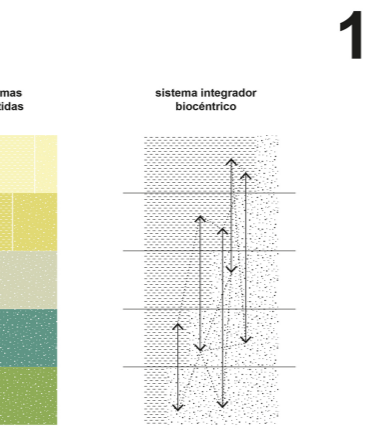
Khams nazarat, o las cinco miradas, se plantea como una metodología para dar respuesta a las dos preguntas de investigación procedentes de proyectos que se plantean en Chiva...

el barranco de Chiva como actor clave en la llanura aluvial de Valencia



- ESTRATEGIAS: E1, E2, E3, E4, E5, E6, E7, E8, E9, E10, E11, E12, E13, E14, E15, E16, E17, E18

Table with 3 columns: MIRADAS (color-coded), PLAZO (timeframe), and AGENTES (stakeholders).



Tramo I. parque agrario fluvial, Tramo II. huertos dotacionales, Tramo III. zona San Isidro, Tramo IV. barranco urbano, Tramo V. Parque Natural Municipal de los Charcos.