

Europan 17  
WAALWIJK (NL)

# CLIMATE SAFARI



Nowadays we live a social, economic, and even health, global crisis. European, under the title 'Living Cities', is the ideal format to reflect on the current time in which we live. This way, the challenge is how to develop strategies to face social and ecological collapse. This boards show how a collectively solution can create vital towns based on social, economic, health and environmental justice, where to try an architectural strategy that defines a new urban identity capable not only of catalyzing hybrid situations -where ideation, design, production, leisure and housing happen simultaneously in a highly natural environment-.

## **PROJECT SITE (CONTEXT)**

Waalwijk proposes a site that implies a double challenge. Climate Safari considers resolve the relation with the contiguous historical city, as well as the relation to the other side of the Highway, taking advantage of an adjoining industrial park. Moreover, this site is adjacent of the main ring of the city, a strategic and suitable location for a new bus station, perfectly connected with the Highway.

The Highway marks a clear separation between City and Industry. Therefore, so Climate Safari develops an ambiguous solution that lets solve both parts of the city. Safari Climate not just proposes a cross for the industrial park for bicycles and pedestrian, pretends to create a HUB transfer between the urban and industrial, through a series of supplementary programs. Consequently, City and Industry could benefit from each other.

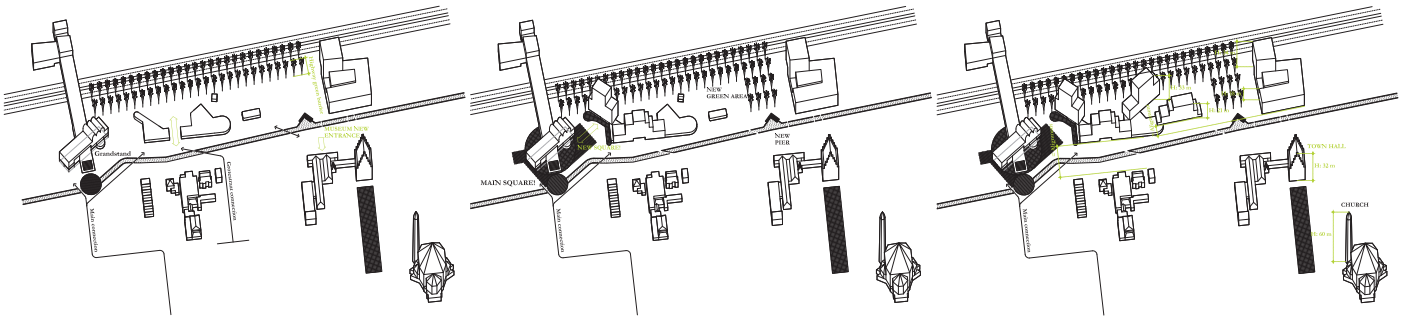
This HUB could not be just a HUB, this should be something else. For this purpose, Climate Safari takes advantage of its location to turn this HUB into an Energy HUB: an energy generator and a waste management and recycling Center for the future urban development.

## URBAN STRATEGY

Across the Energy HUB, Climate Safari generates a new entrance to the industrial park for citizens from the very center. That makes of this location a unique and uncommon place in our current cities. However, perfect for a mix use of living, research and working.

This new gate for industrial park, shaped like an Energy HUB, implies with it a decentralization of the city center thanks to densification, new public space, squares and facilities that generates.

The square that connects the Bus Station, the Energy HUB with parasites and the rest of the city is a perfect place to be considered a new center of the city inside a forest, or rather, a jungle surrounded by a gorgeous Winterdijk and buffering green area of noise and CO2 as a border with the Highway.



## ENERGY STRATEGY

Climate Safari considers the Energy HUB as a heart of an energy efficiency system, a motor able to improve all the processes involved with consumption and waste reduction. Our Energy HUB is not just a support supplier of energy for parasites complex buildings, it is also a control center of management and transformation of the minimal waste and waste water that they generate.

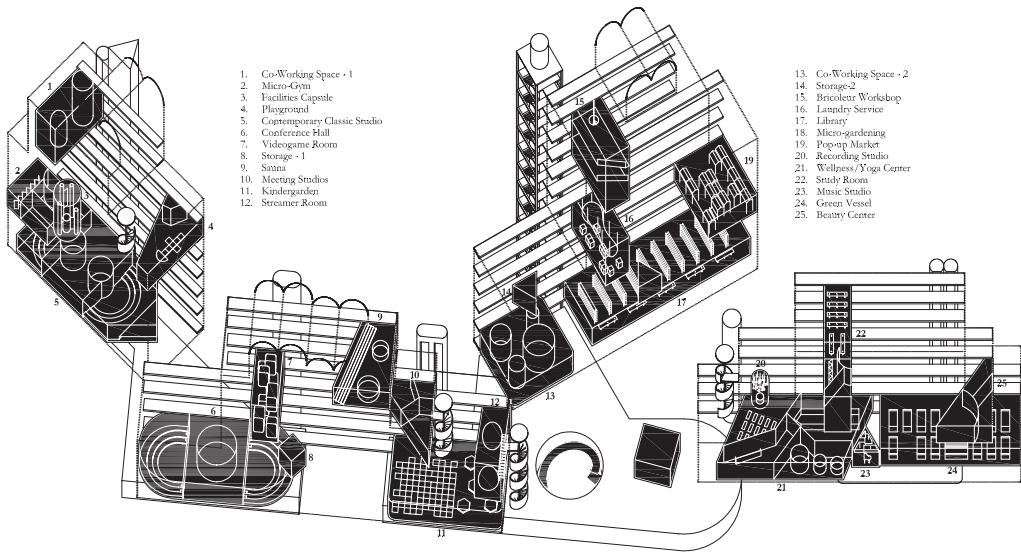
So, Climate Safari works in the creation of a network where new parasites could be joining, boosting an urban metabolism among all. This is able thanks to the urban, construction system design and the production system, as well as a future protocol of maintenance that creates a closed cycle of waste and emissions.

There is even already a climate safari that we adhere to. The climate mayor takes you to the green city entrance next to City Hall with a new, sustainable water collection. The safari then travels on to the Schoenekwartier where you will learn more about the newly installed systems that provide heating with geothermal heat and solar panels. So, all we do is promote an idea that already exists in the citizen consciousness.

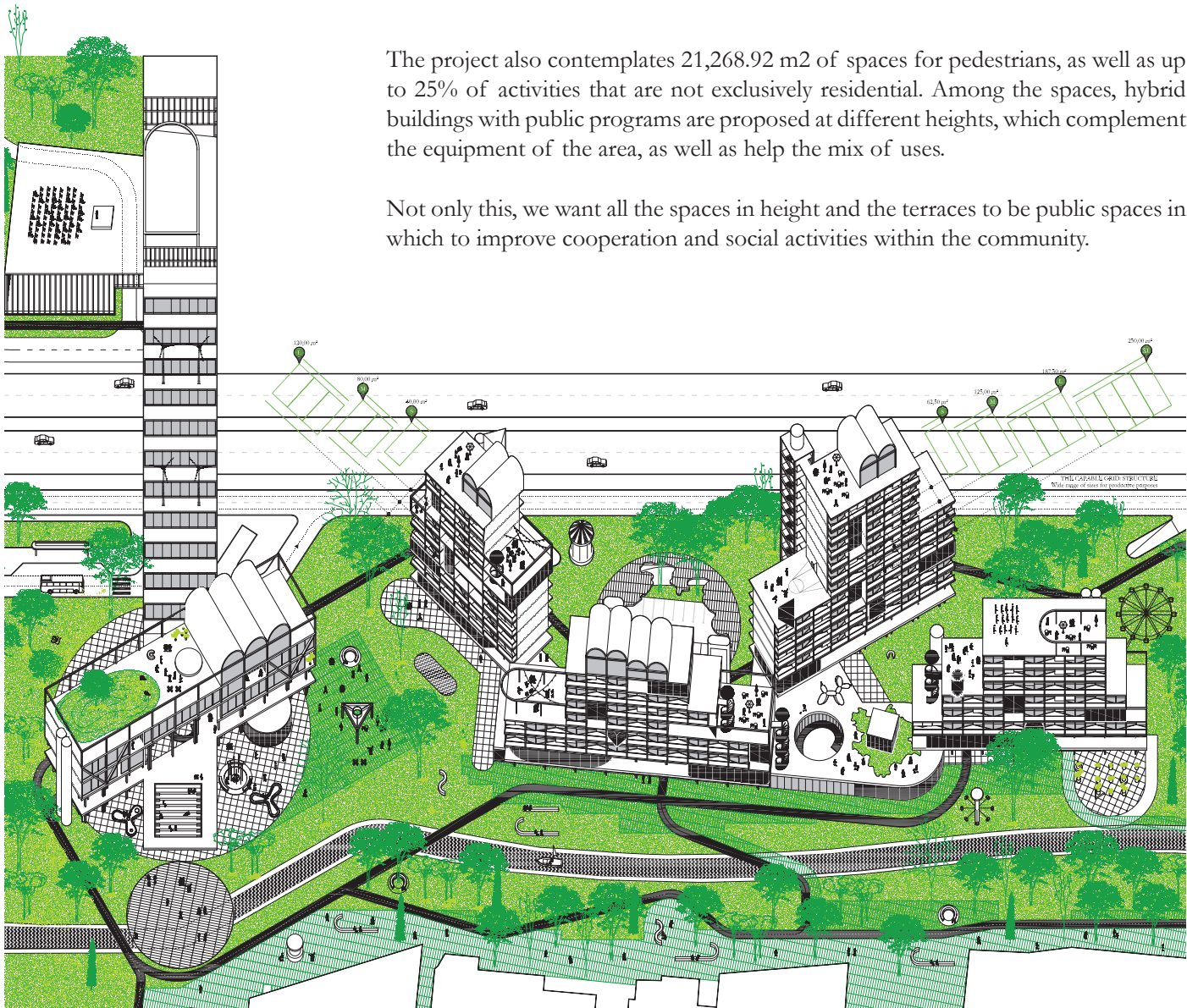
<https://schoenekwartier.nl/en/duurzaam-waalkijk-in-het-schoenekwartier/>



# PROGRAMS / TYPOLOGIES



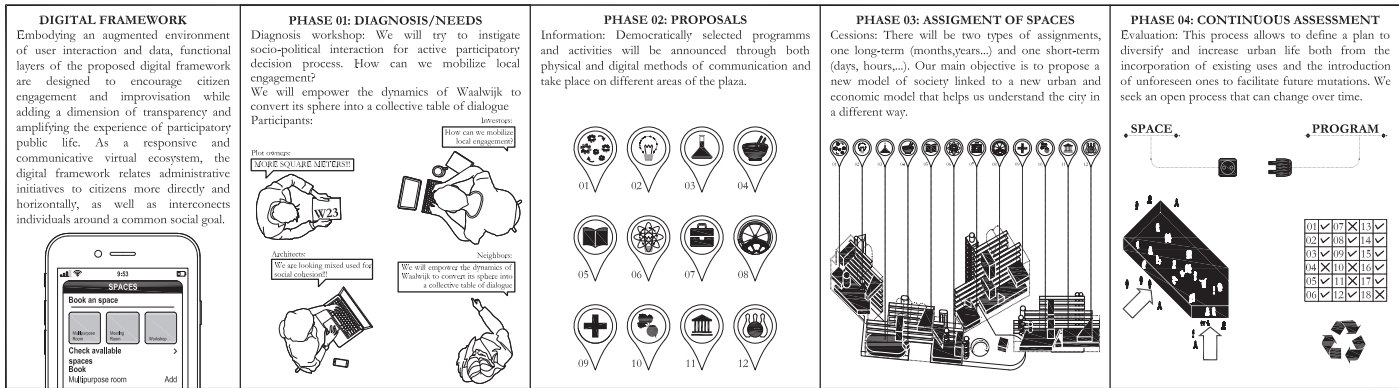
Within this Project Site, we propose the creation of 210 dwellings of different types; of which, 22% (46 dwellings) would be S-sized Studios (35 m<sup>2</sup>), 32% (67 dwellings) would be M-sized Studios (35-60 m<sup>2</sup>), 26% (55 dwellings) would be S-sized Houses (60-75 m<sup>2</sup>) and the remaining 20% (42 dwellings) would be M-sized Houses (75-90 m<sup>2</sup>). Likewise, it is contemplated that the project area contains 378 parking places for the mobility of both the citizens of Waalwijk and the workers of the industrial area.



The project also contemplates 21,268.92 m<sup>2</sup> of spaces for pedestrians, as well as up to 25% of activities that are not exclusively residential. Among the spaces, hybrid buildings with public programs are proposed at different heights, which complement the equipment of the area, as well as help the mix of uses.

Not only this, we want all the spaces in height and the terraces to be public spaces in which to improve cooperation and social activities within the community.

ON HOW TO EMPOWER A SELF-MANAGEMENT NEIGHBORHOOD



As a swarm of “superlofts”, the project is defined as a super structure capable of housing any configuration inside as well as any composition on the façade. The project proposes the design of a “capable” structure, not a final image.

The final image of this structure will be the result of the negotiation process between developers and users where the catalogue will be, possibly, the most appropriate element of mediation.

**FROM WAALWIJK CASE-STUDY TO A STRATEGY FOR EUROPEAN NETHERLANDS.**

The transformations mapped out for the site establishes valid knowledges that could be implemented not only inside but also outside the project site. The strategies applied in CLIMATE SAFARI could be exported to the others cities that have been proposed in European Netherlands.

Through the learning of the relation between industrial park and its energetic policies and the city we find a reference to develop our proposal in the most immediate context and establish sustainable growth patterns.

