

# Helsinki (FI)

## HAVEN – for humans & non-humans alike

FIN haven = satama, suojasatama, turvapaikka, turvasatama

1

# Helsinki (FI)

## HAVEN – for humans & non-humans alike

2

# Helsinki (FI)

## HAVEN – for humans & non-humans alike

3

### INTRO – HELSINKI

Following the new leading principle, the Eastern Archipelago revival is addressed under this umbrella. Helsinki wants to include all the user groups and negotiate with the representatives of marine life (algae, bacteria, fish...), archipelago fauna (insects, amphipods, reptiles, birds, mammals including endangered bats), archipelago flora (mosses, plants, trees) and cultural species. The aim is to get to the bottom of what are the different interest groups' needs, hopes and wishes for the future of the archipelago site.

In year 2024 Helsinki establishes as its new guiding principle and slogan "Helsinki – a city for humans and non-humans alike" and goals to be a first life-centric city without species discrimination, setting the general extended principles of Human and non-human rights declaration, or takes as its new principle that:

- A. All beings are born free and equal in dignity and rights.
- B. Everyone has the right to life, liberty and security of person.
- C. Everyone has the right to rest and leisure.
- E. Everyone has the right to a standard of living adequate for the health and well-being of themselves and their family, including food and housing.

### EQUALSPECIES EQUALITY ACT 2024

Accordingly, as the first mission

### Zones

To ensure a harmonious co-existence between humans and non-humans and protect the rich biodiversity of our project, we have divided the areas into three distinct scales: the archipelago, the islands, and structures. These zones are designed to strike a balance between human use and non-human utilization while safeguarding vulnerable species and providing a comfortable experience for both customer groups.

In order to depict the various uses of the islands clearly, we have devised a scale that classifies them into different zone types. The scale is color-coded, with blue indicating zones primarily intended for non-human use, purple representing joint-use zones accommodating both non-human and human activities, and pink/luchsia signifying zones predominantly designated for human use. This classification system offers a visual representation of the intended purposes and levels of human involvement across the islands.

### Large Scale: Archipelago

At the archipelago level, we address the entire area as a unified entity. To achieve a harmonious co-existence, we have categorized the islands and Helsinki into the following groups:

1. Non-Human Islands and Islets: These areas are restricted from human access, allowing the biodiversity to thrive undisturbed and fostering the flourishing of sensitive species. We prioritize the rewilding of these fragile and biodiverse terrains.
2. Islands and Islets with Minimal Human Intervention: Although open to human presence, these areas are not directed for human use. For example by accommodating plants on roof, blurring the lines of ownership.
3. Joint Use Islands and Islets: These areas accommodate a combination of non-human



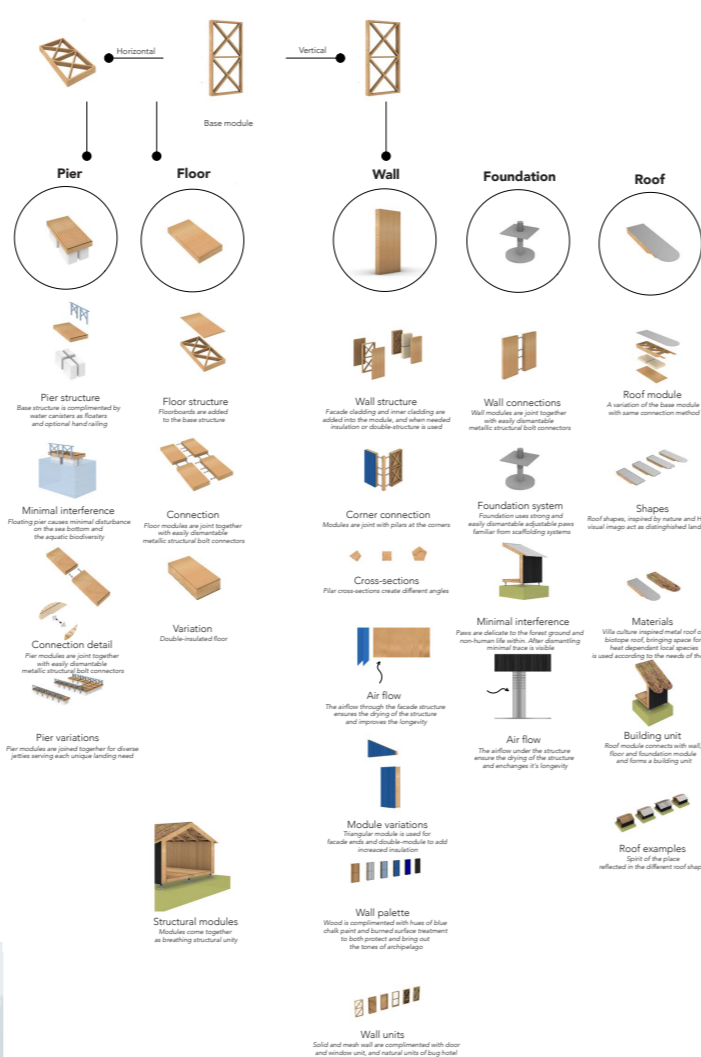
### Middle Scale: Islands

Within the archipelago, each island is assigned different degrees of human intervention to support both human and non-human to thrive together or separately in varying degrees. Landing sites for example are designed to be relatively more human-centric, natural areas more non-human-centric, and in roads efforts are made to find a balance between human needs and minimizing disturbances to non-human habitats.

### Small Scale: Structures

Even within structures, a clear focus is placed on either human or non-human use. For example by accommodating plants on roof, blurring the lines of ownership.

Certain buildings will be designated for humans, featuring amenities like grilling places and accommodations; other structures, such as bat towers and insect hotels will be designed specifically to cater to the needs of non-human inhabitants.



### Modular structure for the built elements



### Archipelago connectivity map



### Non-human customer group

<p><b>Marine life / biotopes</b> Natural habitat: sea bottom, coast</p> <p><b>NEEDS:</b> undisturbed spawning and living areas</p> <p><b>MEASURES:</b> floating docks, no overly large docks, steering people away from overview of vulnerable biotopes by directing them with paths.</p>	<p><b>Diverse archipelago fauna</b> Natural habitat: forests, meadows, swamps</p> <p><b>NEEDS:</b> diversity of biotopes, sheltered areas with few human visitors, areas for nesting and recovering</p> <p><b>MEASURES:</b> A clear main road desensitizing landscaping. Structural path havens in many forms such as bat towers, bird towers, and insect hotels</p>	<p><b>Diverse archipelago flora</b> Natural habitat: forests, meadows, swamps</p> <p><b>NEEDS:</b> diversity of biotopes, areas free of heavy use/ wear</p> <p><b>MEASURES:</b> Clear designated areas for human activity, a clear main road, green roofs</p>
---	--	---

### Human customer group

<p><b>Cultural species / human affected biodiversity</b> e.g. villa history / biotopes, also old rowcombers and ballast species Natural habitat: Cultural landscapes</p> <p><b>NEEDS:</b> some level of maintaining, grazing of land, or special needs</p> <p><b>MEASURES:</b> facilitating gardening space, facilitating information about invasive species and instructions and tools for getting rid of them. Organizing Talks</p>	<p><b>Human life, homo sapiens</b> Natural habitat: nature / villages / cities</p> <p><b>NEEDS:</b> sustenance, safety, health, interaction, purpose</p> <p><b>MEASURES:</b> facilitating spaces intended for recreational activity, leisure, social interaction, reflection and connection with nature. Bringing forward the idea of striving together with nature and showing how it is possible</p>
---	--

### VARTIOSAARI:

Vibrant & active natural, cultural and historical attraction

Vartiosaari is designed with a focus on human-centered features while preserving significant areas for nature. The island accommodates diverse human activities, including the development of villas, a cafe, restaurant, saunas, tree climbing park, and accommodations. Nature accessibility is ensured for all age groups and individuals with different abilities, such as people in wheelchairs. Additionally, challenging hiking routes are available, allowing more space for nature to thrive on steep hills.

Heatmap of humans and non-humans. The first figure is the current situation, and the second is the possible future situation

