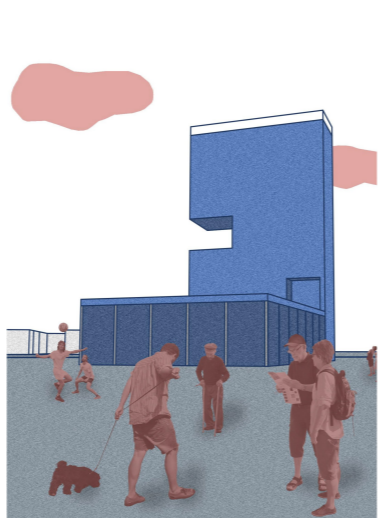




SQUARE WITH KULTURINSEL AND INNOVATION CENTER

NEW PERSPECTIVES is the central theme of this design. Thus, new perspectives are not only created ON the Kurviertel through viewpoints at the edges of the quarter, but also FOR the Kurviertel in countering the main problems of an unbalanced attendance of people on the island throughout the year, limited future perspectives and ageing of the population as well as issues like an insufficient adaptation to the consequences of climate change and malfunctioning connection between Kurviertel and city center as well as inside the quarter itself. We see the key to a livable, vibrant Kurviertel. Redensification through adding more storeys and closing gaps between buildings, new uses such as a weekly market and a sports center, as well as housing distributed throughout the quarter, revitalize the quarter and increase its attractiveness not only for tourists, but also for new islanders. Year-round tourism is supported by a broader range of offerings that, while continuing to focus on spa-compatible uses in the Kurviertel, also provide opportunities for sports-, wellness-, and professionally focused tourism in addition to health tourism. Spreading the number of tourists over the whole year helps to decrease the high vacancy of holiday flats during off-season and enables a conversion of some of the unused flats to apartments for islanders. Borkum's problem of great dependence from the mainland will be countered with an autarkic energy and partly independent food supply. Solar, wind, biomass and geothermal energy will be used to generate electricity, while vertical farming and aquaponics will be used for food production. The plan is to integrate this production into the Kurviertel as well as to use the rural areas of the island for this purpose.



VIEWPOINT

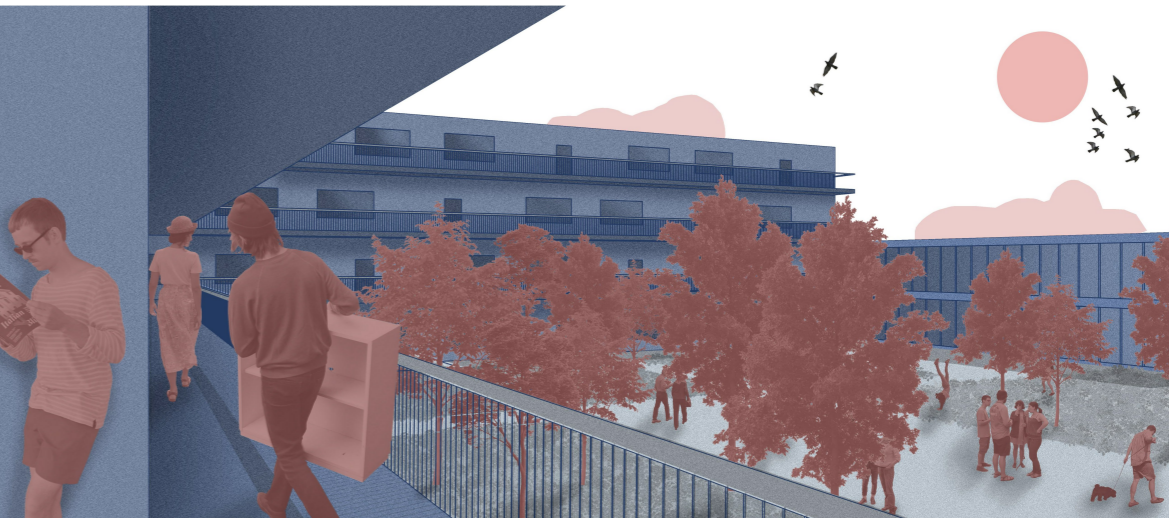


FOOTBRIDGE: "GASTRONOMY"



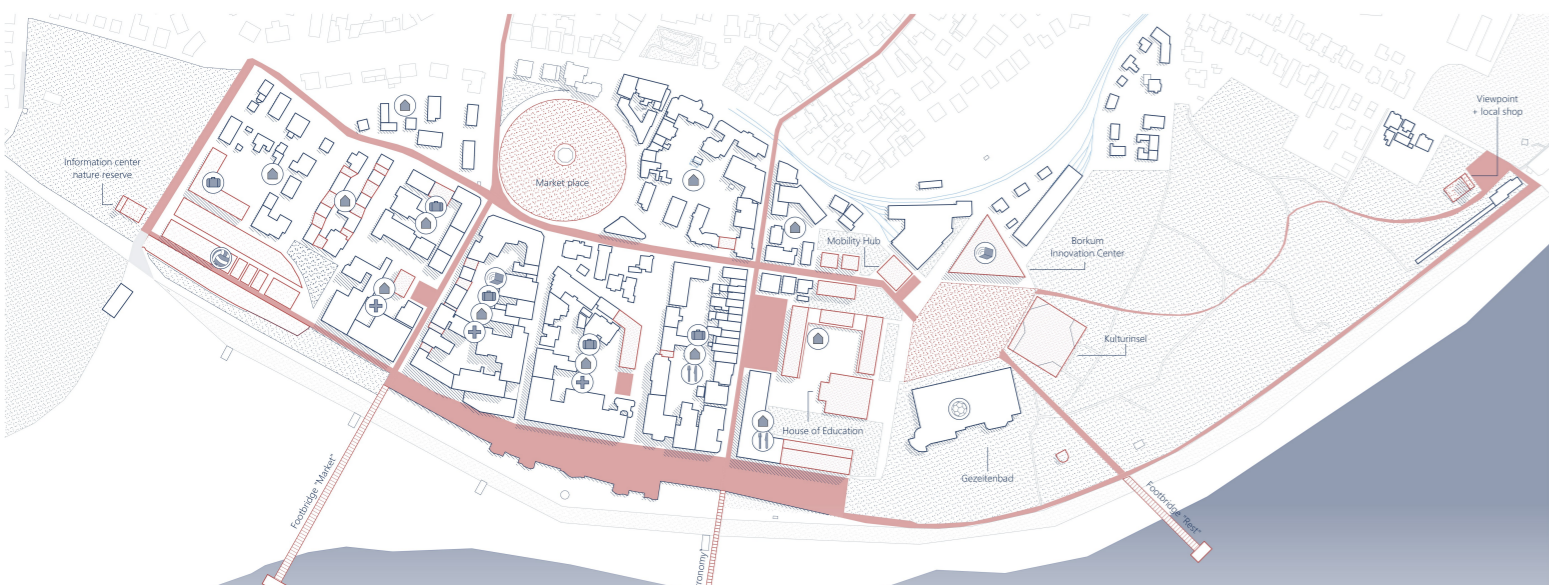
VOLLEYBALL-COURTS

While the northern development area will initially be greened by expanding the adjacent nature reserve and only adding an information center for it, but in the future will also offer space for possible additional residential uses, the southern planning area will be upgraded through new buildings and adjustments to the existing structures and will become the new center of the Kurviertel. The focus is on the people, especially the islanders, for whom an inclusive neighborhood with new jobs, educational opportunities and meeting areas is to be created. The most important changes are the new Borkum Innovation Center ("Innovationszentrum Borkum"), the House of Education and the conversion of the Kulturinsel. In addition to the tourist information center, the Borkum Innovation Center includes co-working spaces, research facilities and work- and exhibition areas for start-ups, thus centrally providing new jobs and future prospects for the Borkum population. Through a conversion of the former tennis hall, the House of Education is planned in immediate proximity of the innovation center. Here, in the form of a kindergarten, an academy for the elderly and premises for a "Insellabur" (online classes in cooperation with other North Sea islands), educational and day-care facilities are to be offered for islanders of all ages. The playground attached to the kindergarten should also be a meeting place for Borkum children outside its opening hours. Multigenerational Housing adds to a strongly connected population that integrates people of all ages and backgrounds who can all come together in the shared courtyard.

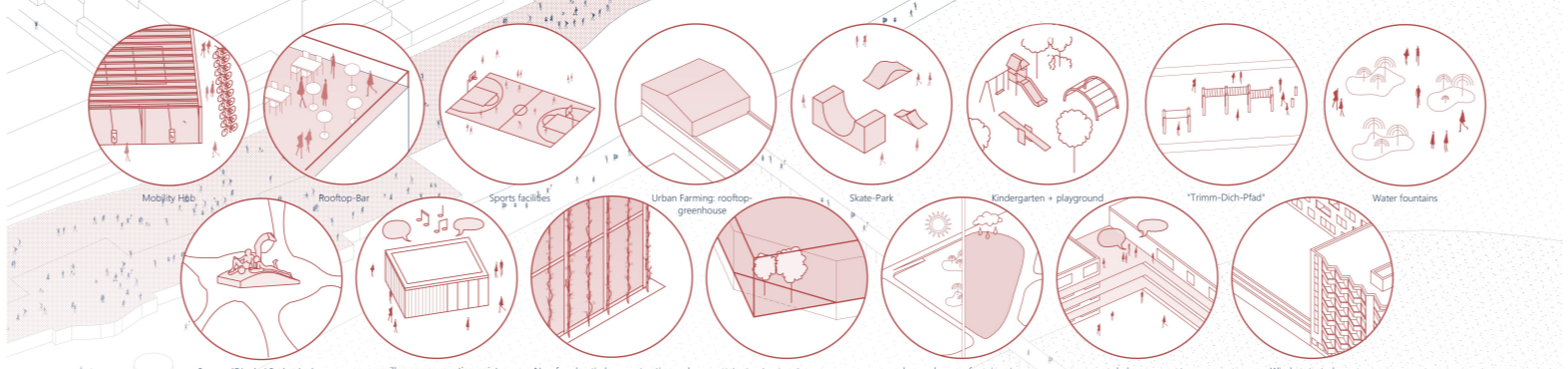
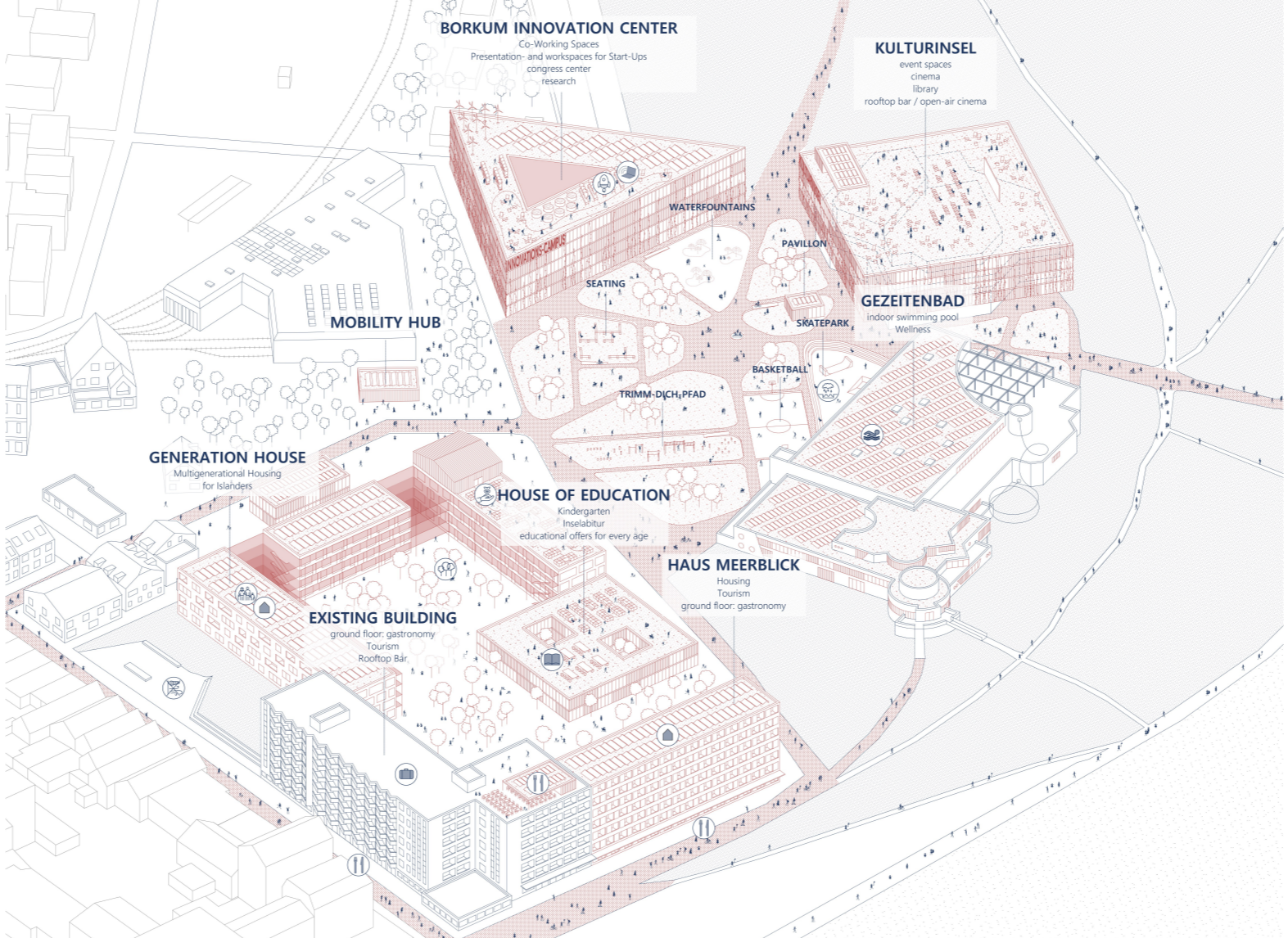
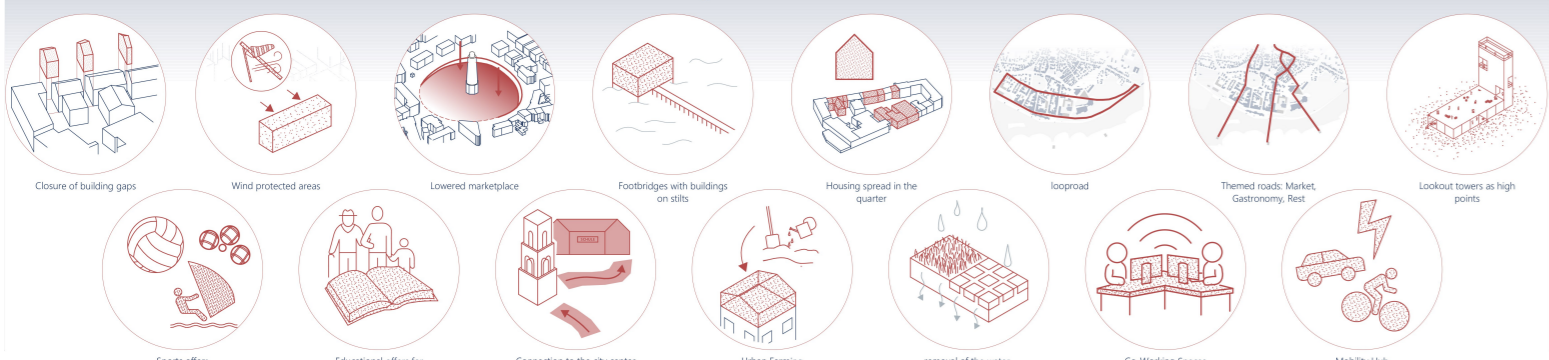


COURTYARD OF "GENERATION HOUSE"

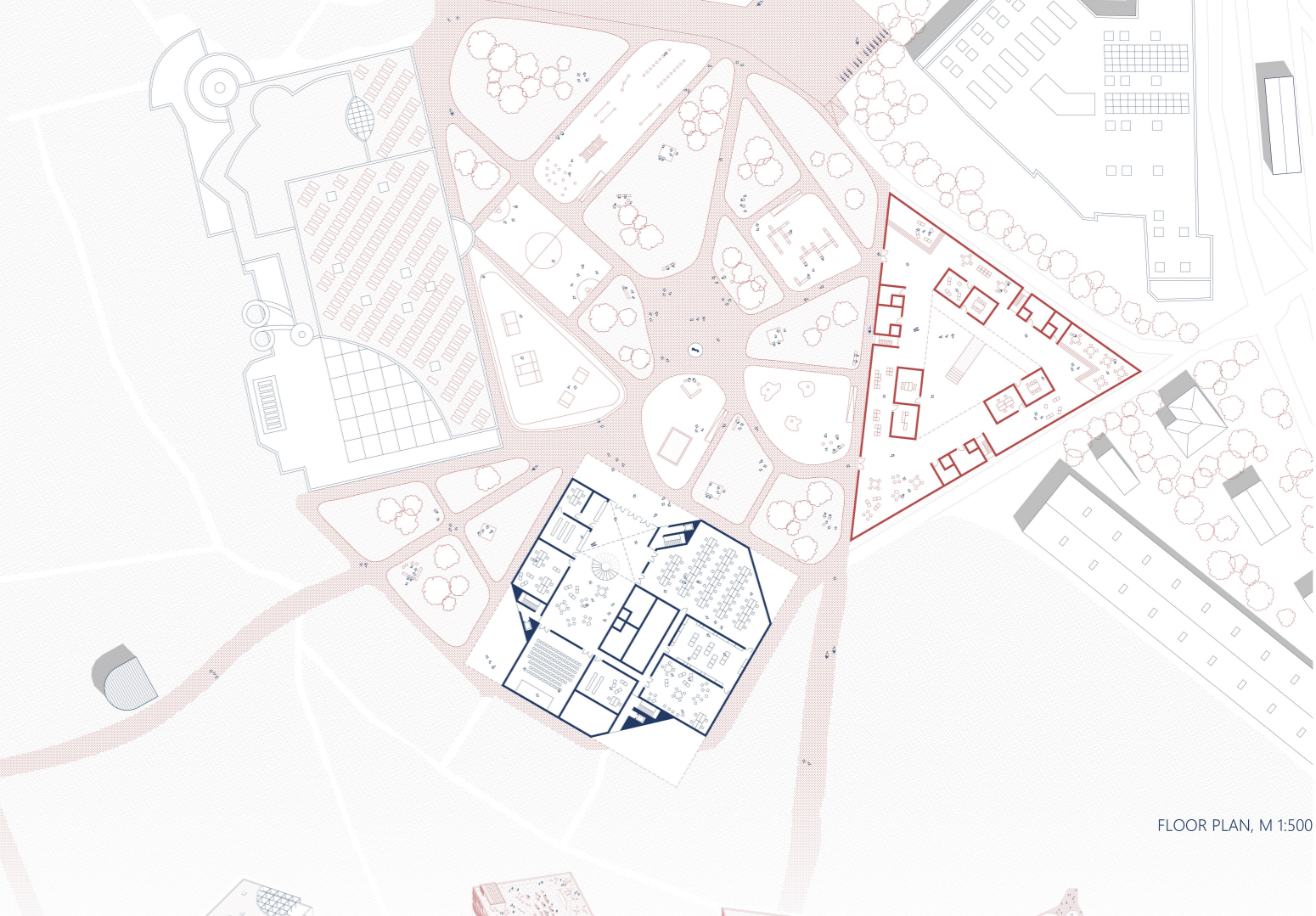
The circular route leading through the Kurviertel is intended to unite the quarter, with the high points at the ends acting as a closing of the quarter. It is supplemented by the themed streets "Market", "Gastronomy" and "Rest" which carry their theme through the quarter into the city center of Borkum and thus create a connection to it. The end point of each of the connecting streets is the old lighthouse or the island schools, which are connected to the new center, especially the House of Education, by this measure. On the coast side, the themed streets will be extended to form footbridges, which will not only provide a different view on Borkum through buildings built into the sea, but also create attractive meeting points. The Kulturinsel will be visually adapted to the new square design by means of a new, built-on structure, while at the same time retaining the existing structure on the ground floor and in the interior and presenting it to the outside through the partly transparent facade. The uses include a cinema and a library in addition to event spaces and common areas which should be used as meeting areas for the island population, especially in times of bad weather. The "Gezeitenbad" remains in its form and will only be energetically renovated and equipped with new windows in the style of the innovation center and the Kulturinsel, so that a consistent ensemble is created, which still shows the existing cubatures. The square will be designed park-like and supplemented by uses matching the adjacent buildings. Through specific, careful additions and modifications to the existing buildings, **NEW PERSPECTIVES** will be created on and for a Kurviertel that continues to be recognizable but is more focused on the population.



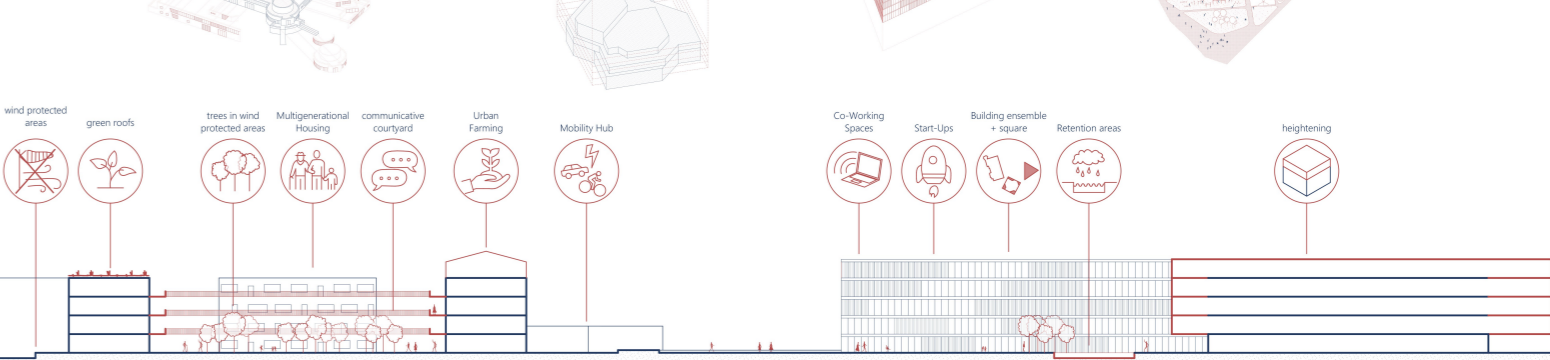
SITE PLAN, 1:2500



AXONOMETRY, M 1:600



FLOOR PLAN, M 1:500



SECTION, M 1:500