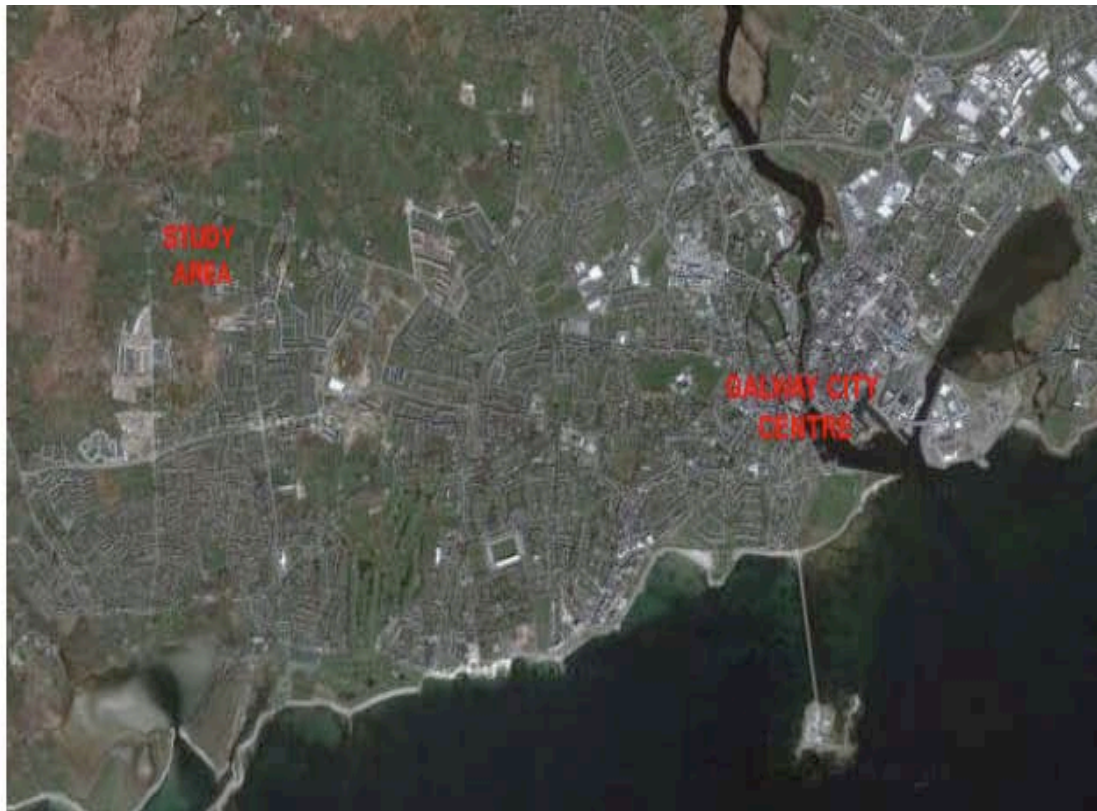




<b>CATEGORY</b>	T2b PUBLIC LINES
<b>Location</b>	Ballyburke, Mincloon, Keeraun
<b>City</b>	Galway
<b>Population</b>	73,000
<b>Study Site</b>	35.818 ha
<b>Site of Project</b>	3.083 ha
<b>Site Proposed by</b>	Galway City Council
<b>Owners of Project Site</b>	Galway City Council
<b>Commission after Competition</b>	Depending on funding estimated 2010/2011

**TRANSFORMATION OF THE SITE**  
 The City of Galway is the urban centre for the Western Atlantic Corridor of Ireland. The study area lies in the western part suburbs of the city. The Galway City Development Plan (2005-2011) sets out a new spatial strategy to steer future growth within the city boundaries. The City Architects have developed a framework plan, which consists of three key elements:  
 - Create a connected and permeable neighbourhood that links with existing surrounding developments and does not impede future development.

- Creation of a block layout that encourages a well defined, enclosed, safe and attractive streetscape.
  - Orientate future development to maximise solar gain.
- To provide a strategic approach to the suburbs and encourage greater efficiency in land use, a prime urban centre shall be designed. The Framework Plan was developed by the City Architects and the Forward Planning Department and one of the main elements is to create a variety and hierarchy of street types. It shall also be the opportunity to set standards for sustainable developments in terms of scale, density, materials and energy use.



STUDY AREA (35.818ha)

SITE OF PROJECT (3.083ha)

### CITY STRATEGY

Galway is the fourth largest city in the Republic of Ireland and is the principal capital of the Western / Atlantic Region. In the National Strategy it is identified as a Gateway City for the region and is considered to be the engine for the development of the region.

The population of Galway City is 72,729 (2006) and 231,035 (2007) including the greater Galway Region.

The overall aim for the city as outlined in these plans and strategies is to enhance the quality of life and experience of the city for residents, workers, businesses, commuters and visitors and consolidate the urban form of the city and to do so in conjunction with improvements to the public network. This shall insure that Galway will remain an attractive, vibrant location for industry, commerce, recreation and tourism.

### Urban Scale: Study Site (yellow)

The study area is located in Ballyburke to the west of Galway City. The site consists of a recreation area in the south and existing two and one storey housing developments to the east, which were built within the last 2-3 years.

### Programmatic intentions:

It is intended that the high quality environment shall be retained and ensuring opportunities for outdoor recreation within easy access.

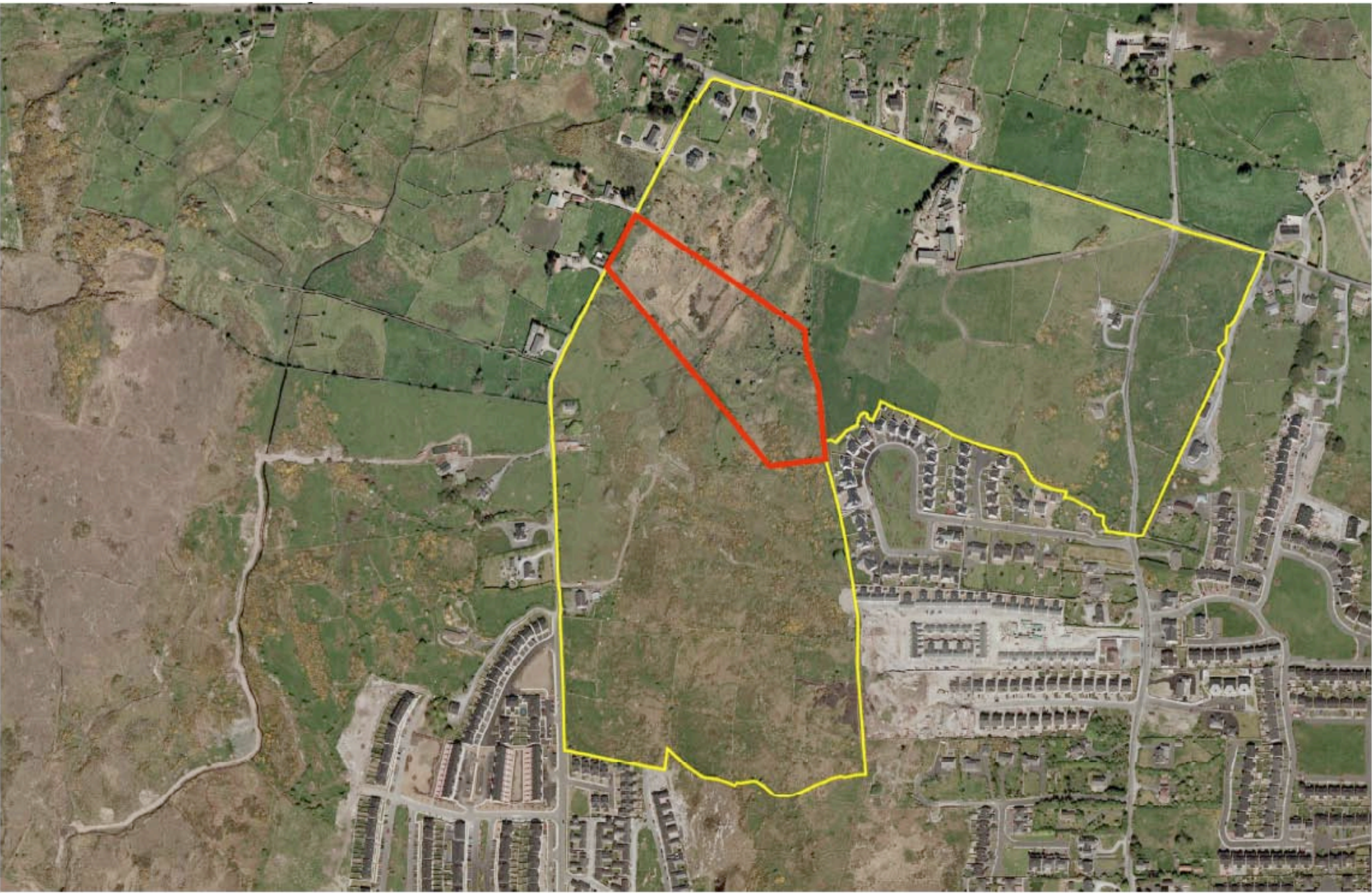
### Proximity Scale: Site of Project (red)

The site of project is located in the centre part of the study site and abounds a smaller entrance section to the west side.

### Programmatic intentions:

It is intended that the site of the project will be developed in 2010.

# Galway – Ireland – european 10



STUDY AREA (25.81km²)  
SITE OF PROJECT (3.08km²)





. North View



Adjacent Development – East Side

