



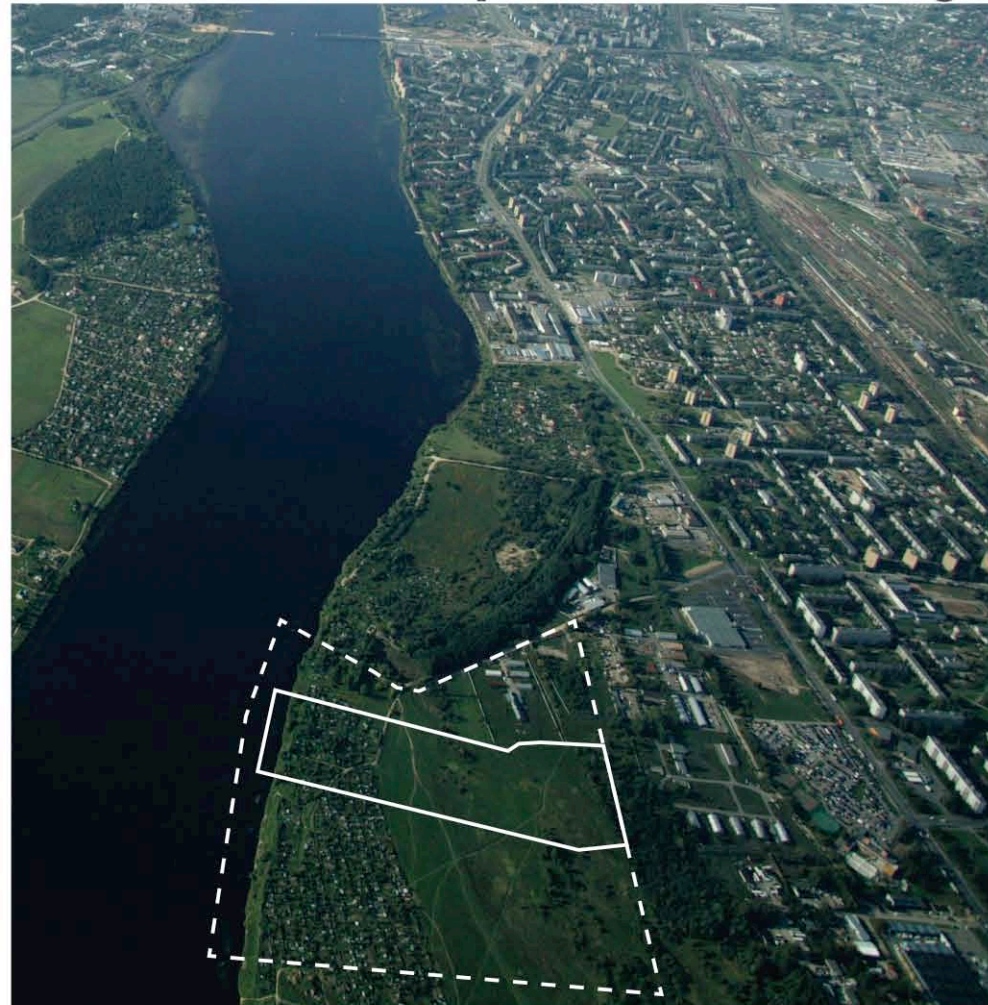
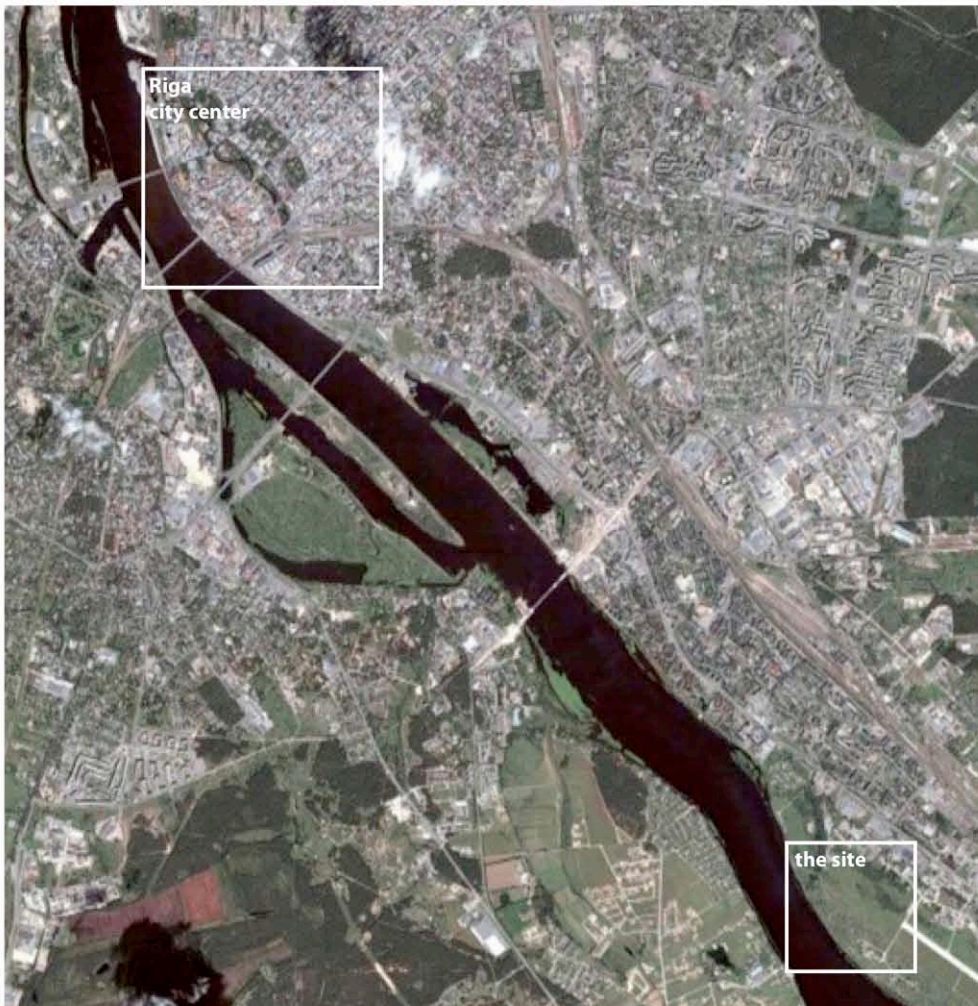
<b>CATEGORY</b>	Designing public space, along the river next to the “Green City”
<b>LOCATION</b>	Riga (Rumbula / Kengarags) Latvia
<b>POPULATION</b>	717 370
<b>STUDY SITE</b>	Approx. 42,34 ha
<b>SITE OF PROJECT</b>	Approx. 13,13 ha
<b>SITE PROPOSED BY</b>	The city of Riga
<b>OWNERS OF THE SITE</b>	The city of Riga, Rīgas pašvaldības „Rīgas Pilsetbuvnieks” Ltd.

#### TRANSFORMATION OF THE SITE

The site is located in the southern part of Riga City (Kengarags/Rumbula) next to the main road leading from the Historic Centre to the South East regions of Latvia, Russia and Belarus. It is located on the right bank of the River Daugava between the urban development project “green city” and the former airport Rumbula. A broad green belt along the River Daugava enables unlimited public access to the riverside. The competition entries are expected to give solutions to a contemporary urban development of the public space between the riverside and the major street with dwelling area, offices, school, kindergarten, the promenade with recreational and entertainment infrastructure including small shops, cafeterias, leisure equipment for the beach and water, as well as locating the navigation terminal in the competition area, enabling the connection with other parts of Riga like Dole Island, historic city centre, Zakusala, Lucavsala, the Riga Gulf, etc.

#### CITY STRATEGY

The Riga historic centre is on the list of the UNESCO World Cultural Heritage Sites owing to the considerations that the historic centre of Riga, while retaining its medieval and later urban fabric relatively intact, is of outstanding universal value by virtue of the quality and the quantity of its Art Nouveau architecture, which is unparalleled anywhere in the world, and its 19th century architecture in wood. In the 20th and 21st century Riga is rapidly expanding, retaining the main axis of the city – the river of Daugava. The Rumbula residential area is located in a very exclusive site at the waterfront, in the green part of Riga. An important decision of the city has been made to create a “green city” and a new residential and administrative center in this part of Riga (total area of 310 ha).



#### SITE DEFINITION

The competition site is expected to become an important administrative and residential center in the southern part of Riga, including residential blocks, public areas, health-care facilities and state/municipal buildings, remaining the existing qualities of the landscape and surroundings. In the city development plan for the period of 2006-2018 the study area is marked with the perspective streets in several quarters, foreseen for the development of buildings with up to 13 -17 floors with offices and retail function.

The diversity of traffic and pedestrian flows in the competition site should be ensured by the functionality of the area. As mentioned before, the promenade is one of very important elements, as it is part of the continuous city promenade along the River Daugava.

#### NEW URBAN MOBILITY

The main goal is an overall concept that integrates all forms of mobility and lively coexistence. The design concept for the circulation in the competition area, including the main road, pedestrian and cycling paths uniting Riga historic center and the outskirts of Riga, landscaping for the streets, green areas and embankment of the river Daugava, are the essential mobility issues. The location of the competition site provides an additional transport connection by water, offering a place for navigation terminal for riverboats in such a way also enabling a higher energetic efficiency of the area and reduction of the street traffic.

#### NEW SOCIAL LIFE

Since Riga is expanding as the center of Latvia and Baltics, new residential areas and public spaces are very important for future development. The competition area in the future will become as a new public centre, giving functional

supplementation and offering citizens a wide variety of social networks and recreational activities. In the surroundings of the competition site there will develop the "green city", the new culture centre, "park and ride".

#### NEW SUSTAINABLE ENVIRONMENT

The competition area is located along the waterfront of Daugava, next to the "green city", surrounded by a green belt, therefore all environmental issues related to the waterside development should be considered. The competition area should also be complemented with a promenade circle shielding the area from the major street – Maskavas Street. The new development of the area has to meet the requirements of sustainability cities, trying to reconcile the urgent needs for effective environmental protection and saving energy, focusing on improvement of the interaction with the natural environment.



A - Aerial view on the site



A - View from the site over the river Daugava to the opposed embankment  
C - Aerial view of the site

B - View over the allotment gardens on the site  
D - View of the site