

View from above of the site



© Piotr Jaxa

CATEGORY	Rural/landscape/architectural
LOCATION	Romainmôtier and Croy (VD) Site «Le Vallon du Nozon»
POPULATION	Romainmôtier: 455 inhabitants Croy: 318 inhabitants
VALLON STUDY SITE	500 ha
PROJECT SITES	40 ha (Croy) 35 ha (Envy «Sur le Signal»)
SITES PROPOSED BY OWNERS OF THE SITE	Municipalities of Romainmôtier-Envy, Croy Municipalities of Romainmôtier-Envy, Croy and private owners
COMMISSION AFTER COMPETITION:	Depending on the site: drafting of a master plan or project development.

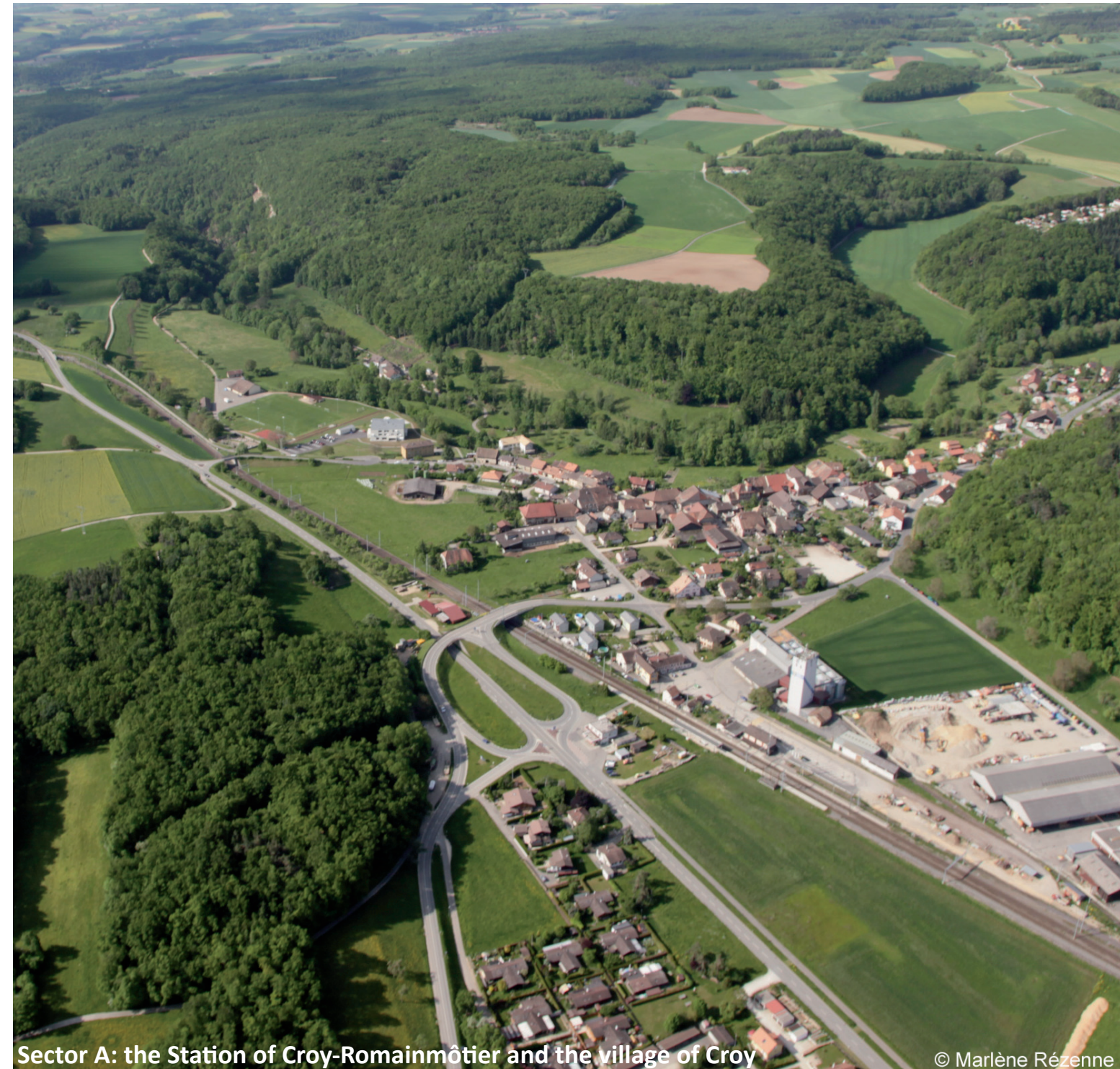
TRANSFORMATION OF SITE
Romainmôtier and Croy are located in a unique environment at the heart of the beautiful natural scenery of the “Vallon de Nozon” at the foot of the Jura.
The two villages are easily accessible from the major urban centers of the Swiss Plateau.
Romainmôtier is a protected medieval village known mainly for his Abbey. However, the attraction of Romainmôtier’s heritage lasts only a few months in summer.
Croy stands at the interface of the public transport networks serving the “Vallon”: the railway station and the regional bus lines. The municipal authorities of Croy and Romainmôtier want to boost the attractiveness of their villages and of the “Vallon de Nozon” with a sustainable and controlled urban development.

THE CITY’S STRATEGY
This ambitious project has three goals, two of which are part of the European competition: Rethinking the industrial area of Croy and developing a new residential district that would set an example in terms of sustainable development, while accommodating a new population that will take advantage of the existing transport infrastructure.
At the top of the valley, in the hamlet of Envy at the locality called «Sur le Signal” they want a proposal to develop innovative tourist and leisure facilities: (hotel, camping, swimming pools, etc.).
The protected Romainmôtier heritage buildings should be reassigned to cultural and popular activities.
This should be taken into account when planning future developments, but it is not part of the current contest.



Envy, sector B: camp-site

© Marlène Rézenne



Sector A: the Station of Croy-Romainmôtier and the village of Croy

© Marlène Rézenne

DEFINITION OF THE SITES

The Croy site (**A**) lies at the bottom of the vallon; it is very representative of the rural villages at the foot of the Jura Mountains consisting mainly of farms and livestock.

The building potential is low.

Thanks to the railway line, an industrial zone appeared near the railway station.

A residential area with single family homes completes the landscape.

The train line serving Croy links Lausanne to Vallorbe and is used as an interface with the bus service to the valley.

Still, the location enjoys a unique view on the Alps panorama.

The “Envy” site (**B**), located above the protected village of Romainmôtier, consists of a rural hamlet made of farms growing cereals and breeding livestock. On the highest area is located a campsite with a swimming pool and a clubhouse. It is old and run down with no heritage value.

NEW MOBILITY

The role of the Croy railway station as transport interface must be emphasized; a Park and Ride facility should make it possible for visitors to park their cars and use - to visit the valley and the medieval village of Romainmôtier - a new public transport system, efficient and fun, that would serve the valley all the way to a recreation and tourism center located at the top of Envy.

NEW WAYS OF LIFE

The municipal authorities want to attract a new population eager to live near urban centers but in a place dedicated to nature with an exemplary habitat that is environment friendly; they also want to offer companies a natural setting within a reasonably controlled mixed use of the land.

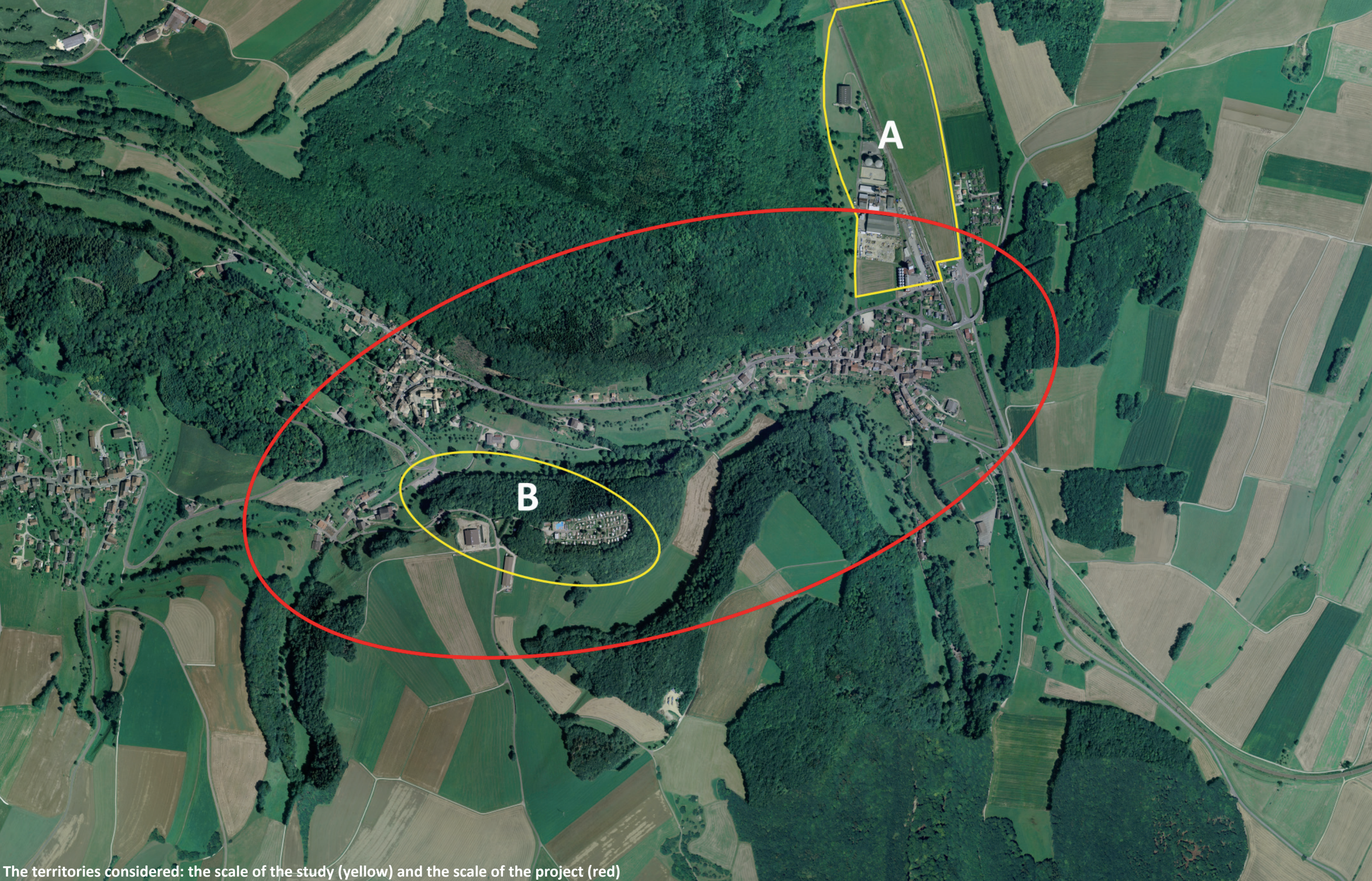
NEW SUSTAINABLE DEVELOPMENT

The natural and integrated sustainable development aspect of the projects should be especially noticeable in the users’ quality of life.

This concept must remain attractive over the long term and play a role in this approach.

It is a state of mind where the technique is a means but not an end.

europan 11 - Switzerland - Romainmôtier

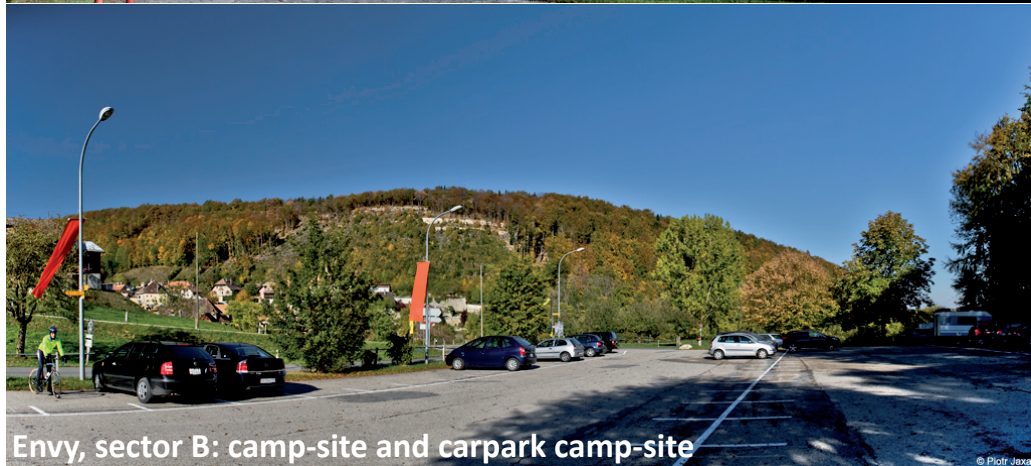


The territories considered: the scale of the study (yellow) and the scale of the project (red)

europan 11 - Switzerland - Romainmôtier



© Piotr Jaxa



© Piotr Jaxa



Old town of Romainmôtier

© Marlène Rézenne



The Valley of Nozon and the railway station of Croy-Romainmôtier

© Marlène Rézenne



Sector A: industrial park and free plots

© Michel Ruffieux



Croy, sector A: the village and the railway station

© Marlène Rézenne



Envy, sector B: entry camp-site (with swimming pool)

© Michel Ruffieux