

Population

74.391 (conurbation) 2.102 (town)

Location

Azurara

Study area

24 ha

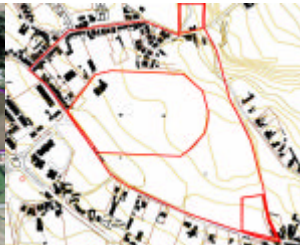
Site area

Approx. 10ha (split into 3 parcels:
nucleus A, nucleus B and nucleus C).

Theme

Mutual accessibility of the two banks of the Ave is sought, by the creation of continuity in the town's urban fabric.

The study area is in a fragmented and still unsettled suburb, a situation that opens up the possibility of a multi-functional space, and the creation of housing clusters based on innovative living and public spaces.



Conurbation

The town of Vila do Conde is in the extreme north of the Greater Porto metropolitan area. As for Azurara, this is situated to the south of Vila do Conde, on the south bank of the River Ave.

Owing to overall improvement of access (metro, motorway), it is foreseeable that this area will become more sought after for housing, industrial spaces and facilities for the service sector. Indeed, this demand is already discernible.

Site

The site is open land whose vegetation is of no great interest. Almost flat, the land is bordered by a main road.

To the east, the area is edged by a disused railway line, soon to be replaced by a metro line, and currently used as not very productive agricultural land. To the north, is a housing zone, for the most part one or two storey family houses. The land-use plan specifies amenities and housing limited to three storeys.



Programme

Overall proposals are invited for the whole of the study area whose general brief is for an open programme that puts emphasis on low rising housing buildings.

The site area is composed by three nucleus, two of each located in the sectors close to the planned metro stations. Here proposals must contain links with the existing road network and other urban infrastructures, create small interfaces adapted to the needs of inhabitants, and ensure good environmental quality.

For the third (central) nucleus, the demand is for the construction of a nucleus of housing, to include shopping and recreational facilities, public services, as well as small business units linked to communication technology. Provision must also be made for sports facilities, and green spaces.

Issues

functional: Proximity of major transport routes is a feature of the site, with the recent completion of the new motorway and the projected new metro line, which will have two new stations on the edge of the zone. These routes will be suitably linked.

social: Proposals must give consideration to the creation of innovative spatial structures able to stimulate contemporary social relationships.

perceptual: The area's peaceful nature is to be preserved, while intensifying its identity and a sense of centrality.





