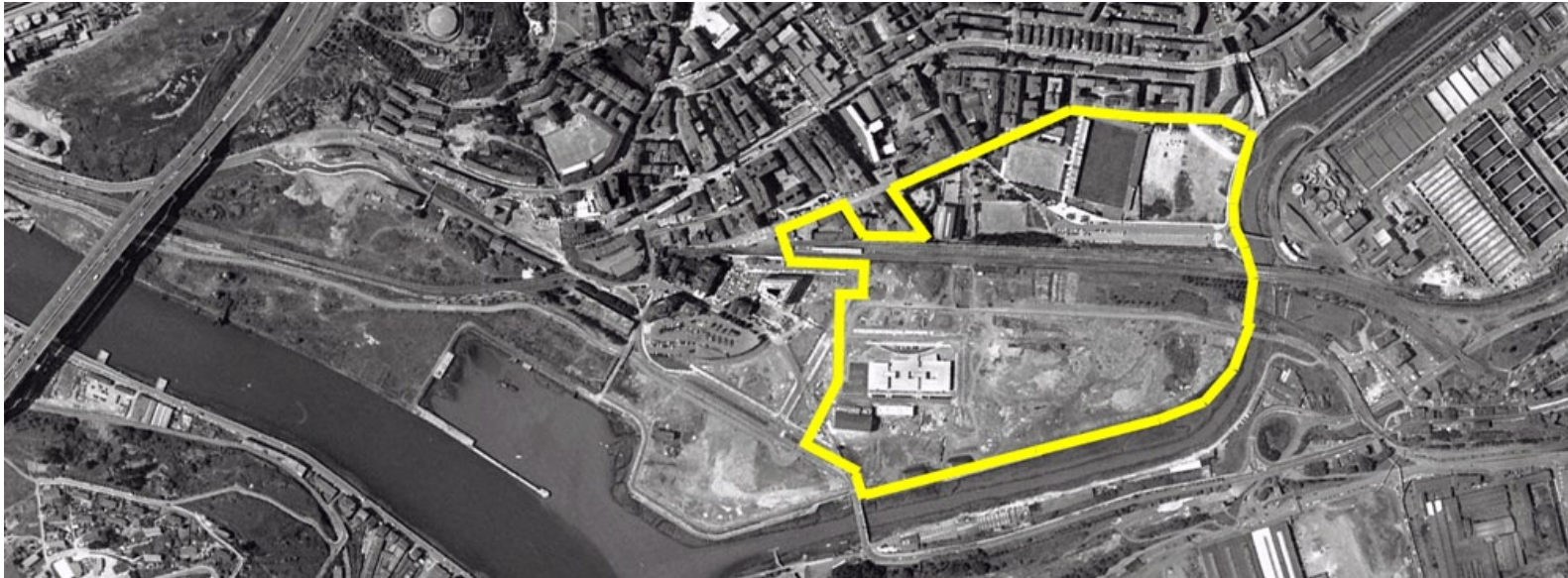


EUROPAN 5 – BARAKALDO – ESPAÑA

Location: Barakaldo, Galindo area

Population: 100,000 inhab.

Study area: 2.3 ha || **Site area:** 0.6 ha



CONURBATION

Barakaldo belongs to the urban area of Bilbao. The second most important town of the Vizcaya region, it covers over 50 hectares, and is situated on the edges of the River Galindo, tributary of the Nervión, on the old road linking Bilbao to Sestao, 4 kms from the sea.

Its industrial zone is close to the water courses, and is undergoing conversion. The Bilbao Ría 2000 organisation is at present developing a major urban regeneration operation.

SITE

The site is between Barakaldo town centre to the south, the River Nervión to the east, the River Galindo to the north, and future residential zones to the west. The construction of a park is intended on the banks of the Galindo.

The Bilbao-Portugalete-Triano railway line crosses the site from south-east to north-west, and divides it into two distinct sectors. This railway line must be taken into account, even though in the long term, it is to disappear. The site is also crossed by a major road which links the outskirts to the town centre. It is intended to build a tramway which will link Barakaldo to Bilbao. At present, two metro stations exist near to the site. That situated on the opposite bank is also a railway station.

Large industrial hangars occupy part of the land, some of which have to be conserved.

The land belongs partly to the municipality, and partly to the General Council. The latter, nevertheless, will hand over management to "Bilbao Ría 2000".



OBJECTIVES

Previously occupied by industries linked to the steel industry, the site must be given a new use.

Zoning has to be determined. Business activities will be developed to the north-east of the railway line. To the extreme north-west of the site, a subsidised housing estate will be maintained. To the north, will be preserved housing, economic activity and the general form of the public spaces.

An urban facade needs to be created on the scale of the landscape, in order to establish a continuity between the Barakaldo streets, the new green spaces of the Galindo, and the superb summit of the Roca de Sestao, to the north. A visual permeability can be obtained between Barakaldo, the Galindo, and the wooded areas with different depths of view (the nearby Lasasarre park, the Galindo in between, the Sestao rock in the distance.)

PROGRAMME

In order to consolidate the integration of the site into the urban fabric of Barakaldo, mixed usage must be programmed. Some 18,400 m² of housing (150 homes) is to be created on a maximum ground area of 6,200 m².

Economic activities represent the construction of a minimal surface area of 26,700 m² of plots for sale with a plot ratio of 0.5.

Sports activities are to include an existing football ground, which will stay where it is, but be renovated to provide seating for 6,000, and a new second football ground able to seat 1 000, with artificial turf (100x64 m.) provided its construction does not disturb the overall plan. In addition there is to be a covered multi-sports stadium comprising three elements (a 25x16 m. swimming pool, and 2 pools of 16x8 m. covering 3,500 m²; a 3000 seat multi-sport field of 54x45 m. covering 4,300 m²; and a service building of 800 m²). Finally there will be open-air sports grounds.

Overall, the public spaces must be distributed over 24,000 m².

THEME

An area is to be linked to a landscape with both urban and natural qualities, making use of both land improvement and architecture. A new and living urban fabric must be incorporated that involves particularly powerful elements with major infrastructures: bridges, flyovers, railways, and rivers.