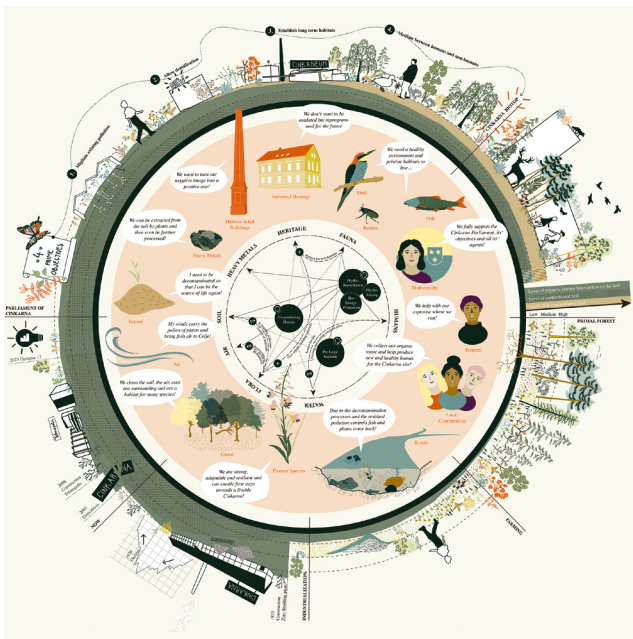


re-Placing – Narratives of Rehabilitation

By **Bernd Vlay** (AT) – architect, co-founder of StudioVlayStreeruwitz, teacher in Wien www.vlst.at/en/



This text picks up projects which stand up for a provocative interpretation of a habitat: a habitat can only be vital if it abandons its human-centred authorship and opens up to non-human companions introducing a fascinating 'trans-human urbanity'. This new 'species' not only liberates urbanity from the Procrustean bed of our deceptive understanding of city-growth and urbanization. Moreover, it creates a radically different notion of site specificity, putting a harsh end to the centuries old *fata morgana* of 'inferior land' to be replaced by city development of higher value. Rather, trans-human urbanity deviates the vector of development re-orientating the idea of growth. Instead of cannibalising these areas from the outside it provides an opportunity that something from within can start to blossom, no matter how desperate the situation seems to be.

Two groups of projects – one facing the apparent threats of contamination, intoxication and fragmentation; the other facing the alluring availability of still 'unbuilt' land, ready for densification – shall reveal how the notion of trans-human urbanity can trigger the transformation of deficiencies into resources, creating fascinating perspectives, synergies, intensities and 'mixités' that operate beyond the Anthropocene-driven imagination.

I. Therapy-Labs

The European 17 sites of the cities of Celje (SI) and Berlin (DE) represent exemplary wounds that manifest the centuries-long abuse and exploitation of our environment. Each site incarnates an environmental disaster suffering from heavy decontamination and a total loss of biodiversity. Can our disciplinary expertise as planners and designers become an appropriate remedy that works *with* the symptoms of the patient itself instead of just replacing them with familiar patterns of city development that ignore the sites' self-healing potential?



I – Celje (SI), winner – The Parliament of Cinkarna > See more P.205



Working WITH the symptoms – this is exactly what the winning teams suggest. Their proposals look behind the curtain of the misery, exploring the sites' indigenous resources as a remedy to cure the disastrous condition. They provocatively claim a therapeutic coup of resources: the subversive inversion of a site-specific misery into a promising opportunity – and disaster becomes potential.

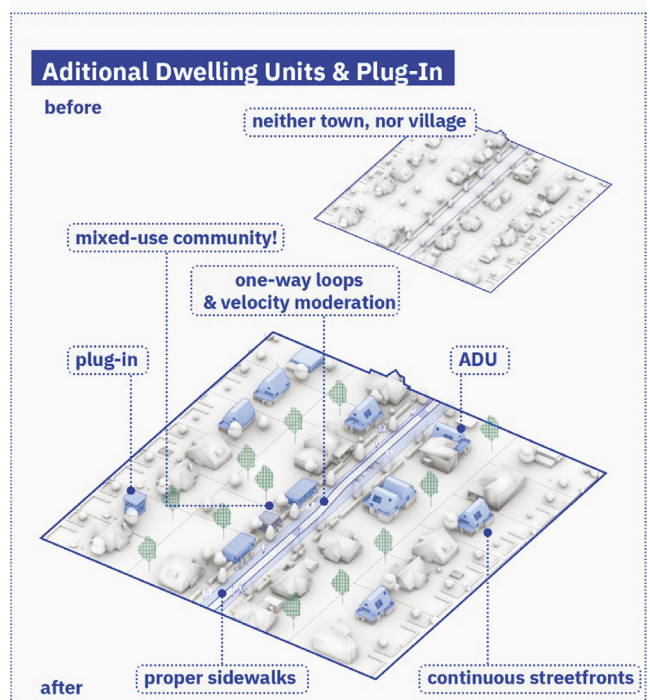
In Celje winning project *The Parliament of Cinkarna* establishes a trans-human agency of local actors that co-creatively contribute to the site's comprehensive repair (fig. 1). Significantly, the colonising format of a 'Manifesto' is countered by the democratic format of a 'Declaration', which respectfully declares the symbiotic empowerment of the 'already there'. A comprehensive soil-decontamination therapy becomes the main source of a fascinating trans-human urbanization including the nano-urbanity of subterranean micro-organisms. They prepare the ground for future life by transforming contaminated soil in black earth 'who' will host a biodiverse habitat being nursed, maintained, and inhabited by humans and non-humans alike. Time horizons establish a long-term framework for the site's projective repair beyond classic densification. Ephemeral programs initiate a comprehensive process of transformation that triggers an indigenous potential of uses: amongst others, moving glass houses act as wandering soil-mining labs that can be seen as forerunners of the Cinkarneum, the future institutional centre where culture, research, events and educatory programs merge. Most explicitly, the Cinkarna trail illustrates the trans-human urbanity of the Parliament's regenerative programming: walking the trail provokes a peripatetic encounter with an indigenous landscape full of explorative joy – a landscape of post-traumatic urbanity.

In Berlin winning project *Karow Kreuz Klub* explores the potential of infrastructural scars that cut apart the suburban carpet of single-family homes. Instead of filling up the unbuilt areas with new neighbourhoods the project suggests a multi-scalar cure of the existing, subordinating human-centred urban growth to the emergence of a biodiverse and experimental landscape. Densifying means preserving open space and intensifying the existing, not replacing it. Different scales of cross-programming introduce tactics of affordability and new forms of co-habitation: the experimental landscape of 'Wetland Village' (fig. 2), the inhabited station, the inhabited edges, the inhabited supermarket and the single-family-home plug-ins multiply the talents of the existing: inasmuch as they enable densification they trigger (bio)diversification and transformative preservation of open land at the same time.

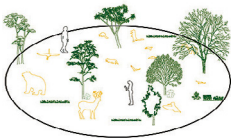
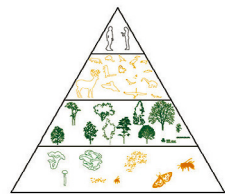


THE PILOT STREET: ADU-S AND PLUG-INS

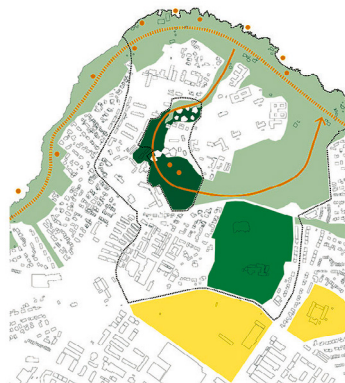
The main issue of the existing low rise districts is the lack of character. The area is neither urban, nor does it feel like a village. Our project aims to enhance the urban environment by incorporating ADUs and plug-in units with mixed functions. The streets network is redesigned to optimize traffic flows and create a more pedestrian-friendly experience. One-way lanes are introduced to simplify circulation, allowing for the inclusion of spacious sidewalks and inviting public spaces.



2 – Berlin (DE), winner – Karow Kreuz Klub > See more P.197



TRANS-SPECIES DESIGN:



FROM GREEN CORRIDORS TO GREEN RING



LOGY: NO CONSTRUCTION AREAS



GREEN STRATEGY: 4 HABITATS

2. Re-PLACING Housing

The availability of still unbuilt land in direct proximity to build up areas is highly susceptible for being engulfed by the logics of city growth. The need for new housing is satisfied by residential neighbourhoods, which usually fill up available 'empty sites' with a good residential milieu that follows classic contextualisations. The winning projects for Østmarka (NO) and Kassel (DE) go a decisive step further: Based on a projective analysis of the sites' potential the teams consider housing not to be a satisfying response. Instead, they suggest a fruitful complexification of the residential program extending its spectrum of responsibility and radius of action. Climate-adaptability, biodiversification, natural heritage, social and physical vulnerability, cultural assets, cooperative opportunities, sustainable mobility – they all become resources that matter; providing a contextualization that powerfully enlarges the residential program. Instead of replacing a seemingly empty site with a housing project they suggest to expose housing to site-specific considerations that fruitfully 'infect' the residential program.

A *Home for All*, winning project in Østmarka, introduces 'Trans-Species-Design' (fig. 3) emancipating the right of animals, plants and the soil as participatory actors. Based on a careful study of topography, soil condition, cultural attractors, social facilities and territorial landscape conditions the project multiplies the resources of the existing by relocating areas of densification, figuring out specific habitats and discovering programmatic links that generate a 'tabula-non-rasa life' beyond Anthropocentric urbanity – 'program follows site'.

SEX in the city, winning project in Kassel, makes a bold plea for a 'post binary nature-culture urbanism' that takes sex as an allegory for ecological reproduction of different life forms at the Northern edge of the city. Instead of replacing agricultural land with a residential neighbourhood the project establishes a site specific 'programmatic ecotone', which triggers a transformative diversification of the residential and agricultural program in symbiotic interaction (fig.4). Sustainable small-scale agriculture with local crops intertwines with linear building types that host a wide range of living models and neighbourhood infrastructure.

Talentification – Tabula Rasa is Nowhere

Facing the symptoms of a planetary multi-crises all four projects rehabilitate the sites tracking their 'talents' as elementary sources for establishing a resilient living milieu. This 'talentification' entails a fundamental shift of paradigm: potentially, a *genius loci* can be everywhere, whereas a *tabula rasa* is definitely nowhere, be it post-industrial wasteland, like in Celje and Berlin, or just innocent available land like in Østmarka and Kassel.



4 – Kassel (DE), winner – *SEX in the city* > See more P.213

Re- ...
Existing
Buildings

Wind +
Micro
climate

SEX in the future
how to live and to live on
in the time of the
anthropocene