



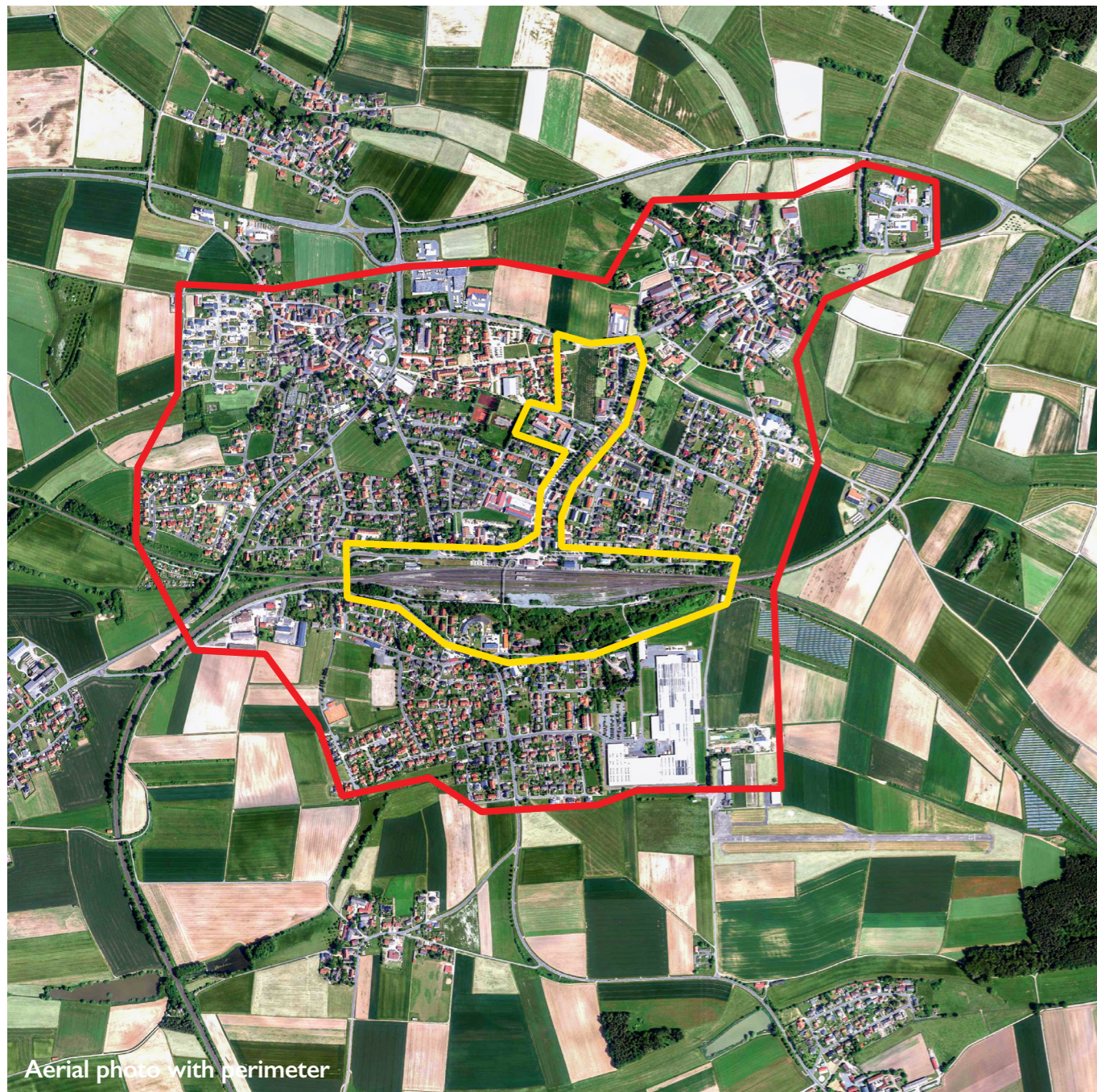
# Speichersdorf (DE)

## How can the existing build and spatial resources be developed in a respectful manner

Scale  
L/S

**Team Composition** Architect mandatory  
**Location** Speichersdorf, Bavaria  
**Population** 5,907 inhabitants  
**Reflection site** 245 ha  
**Project site** Festival Hall: 0,9 ha //  
**Railway station site:** 25 ha // **Open spaces:** 25 ha  
**Site proposed by** Speichersdorf municipality  
**Actors involved** Speichersdorf, Deutsche Bahn, private owners  
**Owner(s) of the site** Speichersdorf, private owners, Deutsche Bahn

**Commission after competition** The results will be discussed, refined and further developed in workshops. Planned are the following steps shortly after the competition:  
1. A structural engineering feasibility study for the festival hall, 2. Planning for the mobility station, including open spaces, 3. Urban-development framework planning to refine the train station area and interior development areas. Commissioning the winning teams is desired but requires approval from the local government municipal council for any commission.



Aerial photo with perimeter



Surroundings of Speichersdorf



Festival hall interior, rear side



Railway station area

### SITE / CONTEXT

For Speichersdorf, the aim is to identify and realize exemplary solutions that strengthen the resilience of the municipality vis-à-vis demographic changes, economic upheavals, and the effects of climate change.

What are sought are model-like projects that can serve as an initial spark and engine for the transformation of the entire region of Upper Franconia.

The municipality, with its 5,907 residents, is located in the Upper Palatinate in the Free State of Bavaria in southern Germany. The location is a region of gently rolling hills with meadows and areas shaped by agriculture, embedded in forested areas.

Speichersdorf is part of the Nuremberg metropolitan region. The closest cities, Bayreuth (75,000 residents) and Nuremberg (518,000 residents), can be reached by train or car in fourteen and sixty minutes.

The participants can choose from three areas to be developed further:

A) For the former festival hall, concrete architectural proposals for repurposing the construction of the hall and finding a new use for the building should be developed.

B) At the historical railway station, proposals for an innovative, sustainable, and vibrant district with modern forms of housing and building typologies and alternative mobility are sought.

C) An overall strategy should be elaborated for the multifaceted open spaces in the centre of the municipality.

Speichersdorf is looking for participants who deal with the existing build and spatial resources in a respectful and careful manner and develop them further as an example for other small municipalities.

Aerial photograph: Geobasisdaten: Bayerische Vermessungsverwaltung, © Bayerische Vermessungsverwaltung 2025, Bundesamt  
Other photos: Thomas Müller



Oblique aerial view of the festival hall with open space

How can the former festival hall be revitalised and further developed with low-cost structural interventions?



Festival hall exterior



Northern view of the festival hall

## QUESTIONS TO THE COMPETITORS

The festival hall as a building resource: What potentials does the festival hall offer? What uses are possible considering the existing structure of the building? How can the spatial qualities and the special architectural features be further developed conceptually and structurally? How can a revitalization take place with minimal interventions and inexpensive measures?

The railway station site as a building and space resource: How does a future-oriented district with innovative living concepts look? What typologies and urban spaces does this interior development require in order to create specific qualities? How can the site give rise to an identity-forming location that links the two parts of the municipality with one another? How can the historical railway station become a lively location once again? How can a mobility hub with attractive areas for spending time be designed?

Open areas as a space resource: What role can the open areas inside the municipality play in the future? What contribution can they make to topics such as climate adaptation, biodiversity, and local food supply? What area potentials can be shown for housing development?



Historic train station and development area

How can a future-oriented neighbourhood with new forms of housing and typologies be created on the railway station site?