

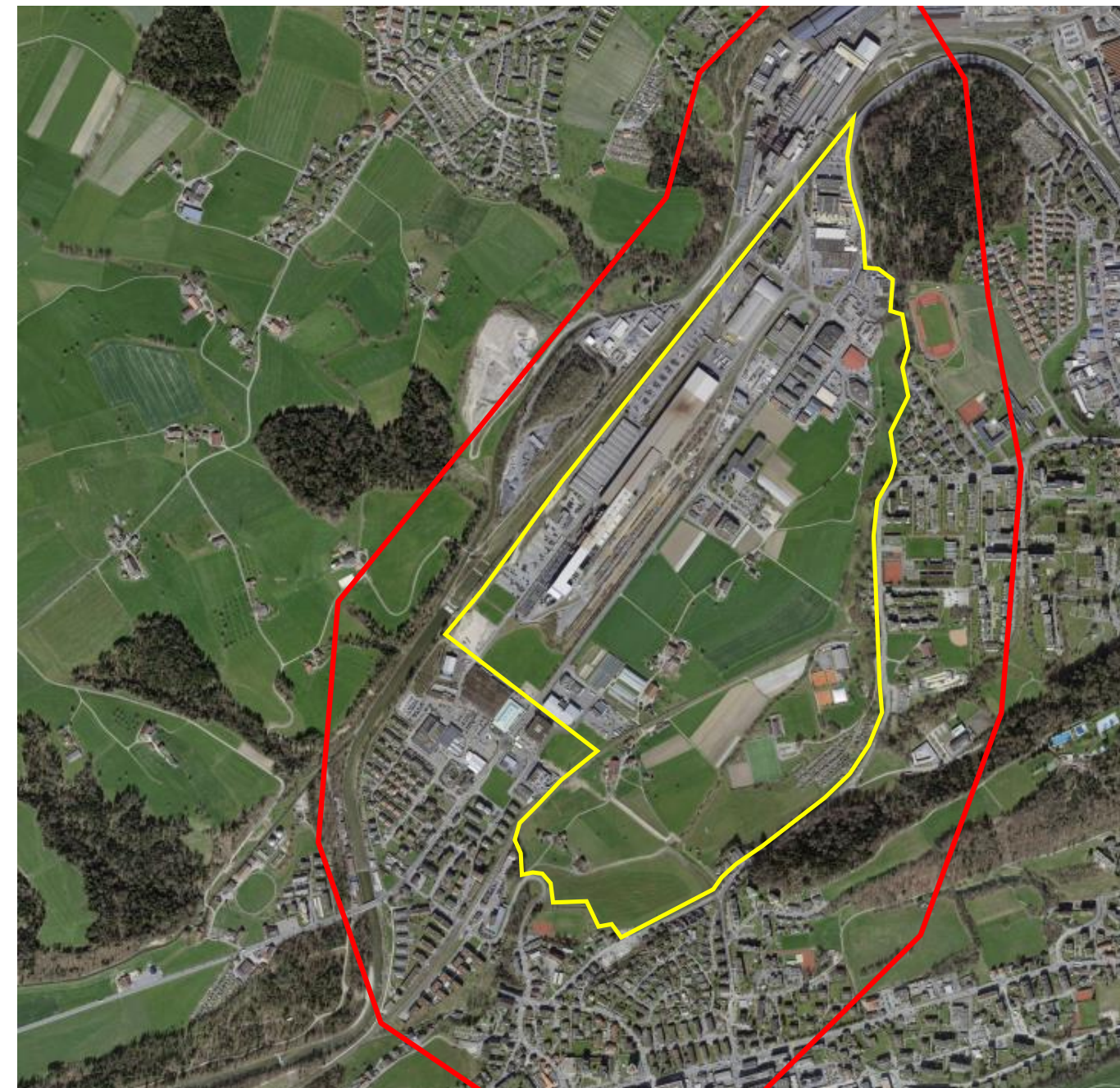
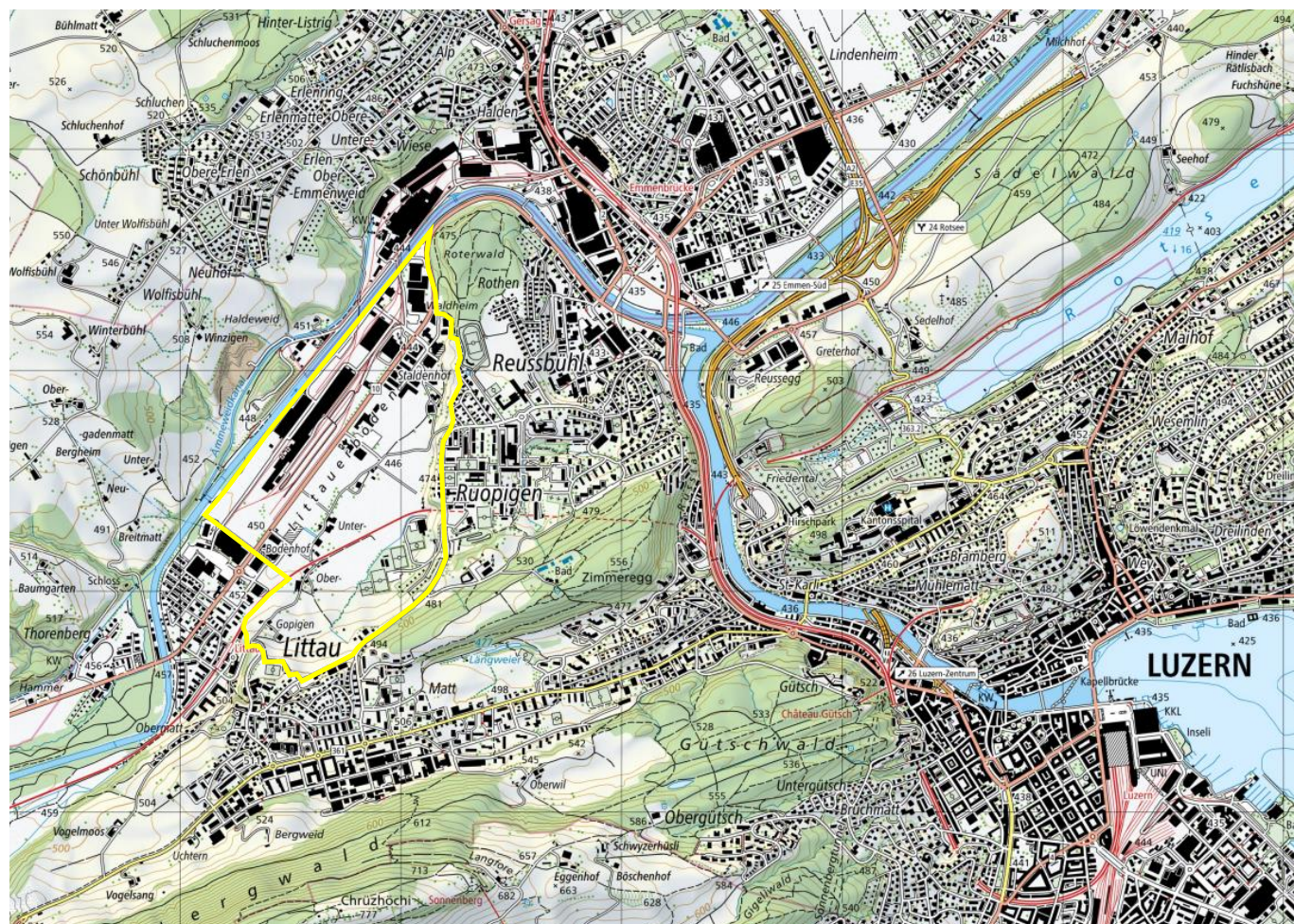
E¹⁸ Lucerne (CH)

Littauerboden redefined

Scale
XL / L

Team composition: Architect non mandatory
Location: Lucerne, Switzerland
Population: 84'000 inhab.
Reflection site: 350 ha
Project site: 120 ha
Site proposed by: City of Lucerne
Actors involved: City of Lucerne
Owner(s) of the site: City of Lucerne, others

Commission after competition:
The City of Lucerne intends to involve the winners of the competition in the further planning, either by commissioning them with a feasibility study or by reserving them a spot in a possible later selective architecture and planning competition. European Switzerland, for its part, intends to integrate the winners as jury members in future European competitions.



SITE / CONTEXT

The Littauerboden is a largely undeveloped area in the west of the city of Lucerne with hardly any spatial planning and urban development ideas to date. Despite its proximity to Lucerne's city center, Littauerboden has a low public profile. With the planned train-stop, the location is moving closer to the city and opening up for a spatial reorientation. This raises the question of the future identity of the site and its significance in the context of the city as a whole, as well as in relation to the surrounding neighborhoods and landscapes. The aim is to use, reinterpret and further develop existing structures and conditions in line with the overarching competition theme of "Re-sourcing".



What is the future identity of Littauerboden and what is its significance in the context of the city as a whole, as well as in relation to the surrounding neighborhoods and landscapes?
 How can existing structures and conditions be used, re-interpreted and further developed?
 How can the coexistence of industry, commerce, agriculture and housing create added value?

QUESTIONS TO THE COMPETITORS

The first step is to develop an idea for Littauerboden that has the character of a guiding spatial concept. Based on the overall concept, two focus areas are to be developed in greater depth:

- A) **new train-stop**
- B) **Ruopigermoos** sports and leisure facilities

The following overarching objectives are being pursued with the European competition:

- A new diverse, lively and climate-resilient urban neighbourhood with a high quality of living, which has its own identity and is spatially and functionally linked to the surrounding structures.
- An attractive centre within the district that is integrated into the overarching network of district centres in the city of Lucerne and is optimally connected with direct and safe footpaths and cycle paths.
- A resource-conserving and space-efficient development with innovative and broadly mixed uses, including existing buildings and facilities. Littauerboden will be strengthened as an important productive neighbourhood for the city of Lucerne, where new synergies can develop. The question is, how the coexistence of industry, commerce, agriculture and housing can generate added value.
- The aim is to create diverse and attractive open spaces that are linked to the surrounding landscape and recreational areas to ensure the connectivity of ecosystems.
- A new train-stop is intended to significantly improve public transport access to the area.
- The Ruopigermos is to be developed into an attractive and versatile sports and leisure cluster that will contribute to the infrastructure needs of the city as a whole as well as meeting the needs of the surrounding neighbourhood.

