

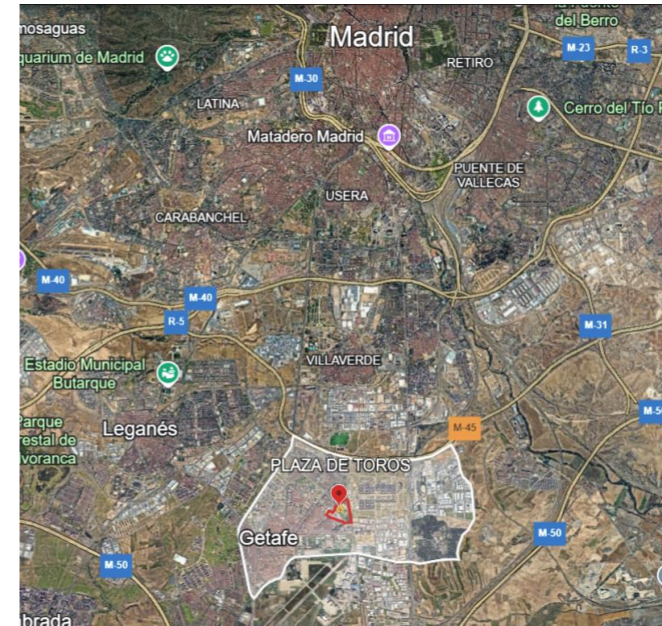
E¹⁸ GETAFE (ES)

Scale
XL/S

How can isolated architecture be transformed in a hinge that revitalises the surrounding urban fabric, generating a higher quality public space?

Location: Getafe, Madrid
Team composition: Architect mandatory
Population: 189,906 h
Reflection site: 466,7 ha/23 ha
Project site: 1.3 ha
Site proposed by: Getafe City Council
Actors involved: Getafe City Council
Owner of the site: Getafe City Council

Commission after competition: Getafe City Council undertakes to commission the Basic and Execution projects for the new facility. If, as a result of the winning proposal, the need to modify the General Urban Development Plan of Getafe (PGOUG), or any other previous document, is detected in order to carry out its materialisation, this will also be commissioned.



SITE / CONTEXT

Getafe is a pole of innovation in the metropolitan area of Madrid. It has a solid business and economic fabric, in permanent innovation and development. Taking advantage of this opportunity, the City Council wants to launch the initiative Getafe Urban Laboratory, GLU. The aim is to place the territory and the city at the service of innovation, generating multiple synergies, in constant reciprocal feedback.

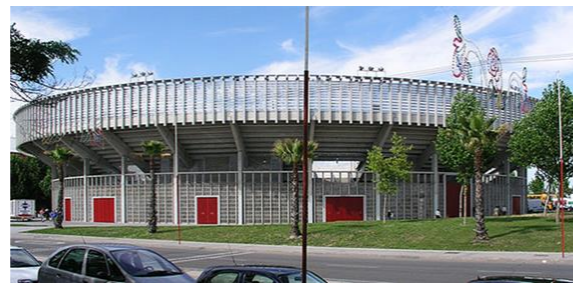
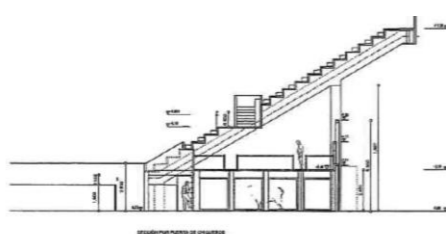
However, Getafe does not have a space that facilitates the transfer of knowledge, beyond agreements that correspond to various specific or very local interests.

The project site is a bullring that has been unused since 2015, as a result of structural seating, which is in need of a cultural renaissance. The location of the bullring has as a strength the possibility of REconverting it into a metropolitan facility. Its emplacement, with a suburban train stop and transport interchange, places the site 15 minutes from the centre of Madrid.

An architecture that will act as a hub for knowledge, bringing together business, academia, society and the third sector towards a sustained vision of the city from a balance of the three aspects: economic, social and environmental. A vision in key RE: REbirth, REsourcing, REcycling, RENaturalising, REqualifying.... in a new context.

A transformation of the art of bullfighting to the field of knowledge of the 21st century. A material rebirth focused on a multi-purpose space that will host different events; congresses, concerts, theatre, opera..., etc. The fusion of culture and knowledge.

In addition, its location at the apex of a highly differentiated urban fabric according to the pattern of each neighbourhood, various non-permeable edges and the availability of public land, can be a creative stimulus that not only transforms the building itself, but also resolves the current perception of fragmentariness.



QUESTIONS TO COMPETITORS

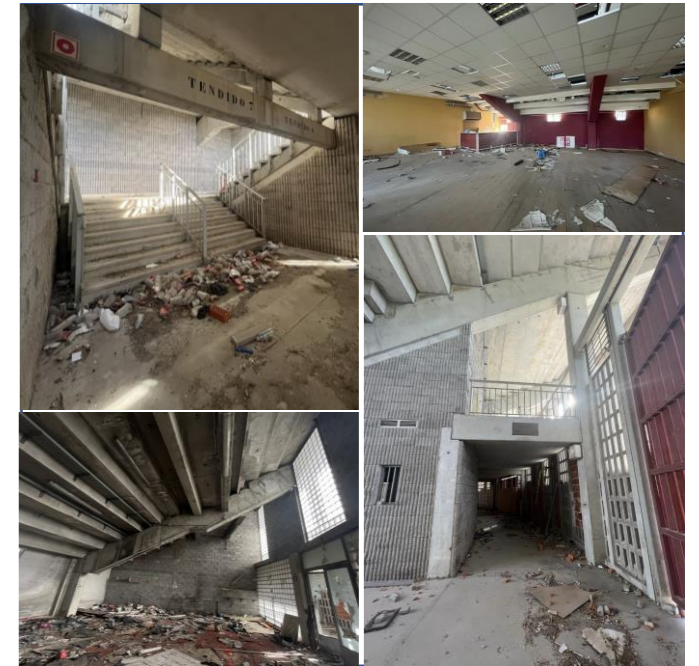
How to REqualify the building so that it becomes a facility that serves the local community, the city and the metropolitan area?

How can the REbirth of this building link the nearby facilities? Maestro Gombau Music School, Juan de la Cierva Sports Centre, future Molinos Civic Sports Centre, etc.

How can isolated architecture be transformed into architecture capable of articulating its surroundings?

How can this Regeneration give rise to a higher quality public space?

How to apply the RE key in the current context to an unused building?



How can an unused bullring revitalise the different neighbourhoods that surround it? Rebirth of the building, with sustainable parameters over time.

How to create a replicable model of typological transformation?